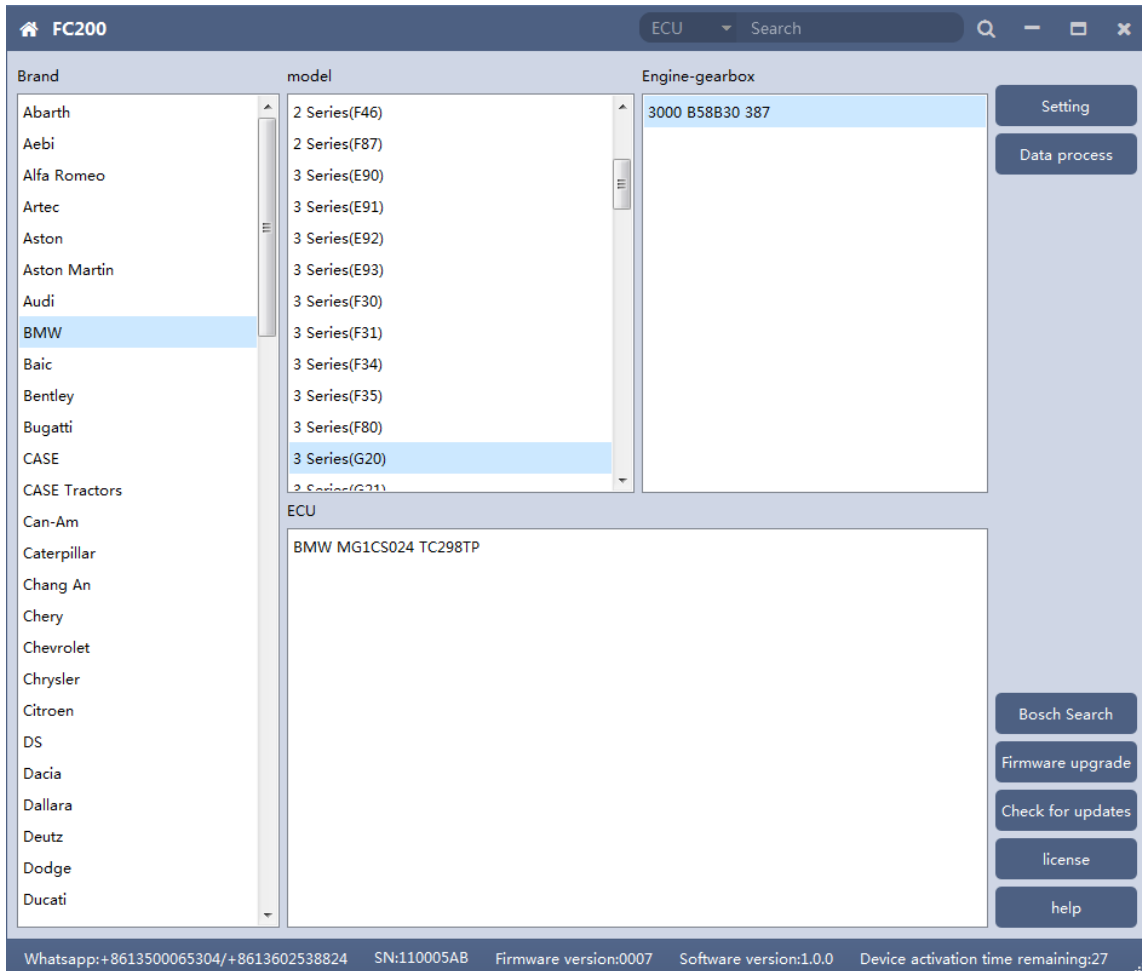


# FC200 User Manual

## 1. How to use FC200 Software?

Below picture showing software version and information of CG FC200.

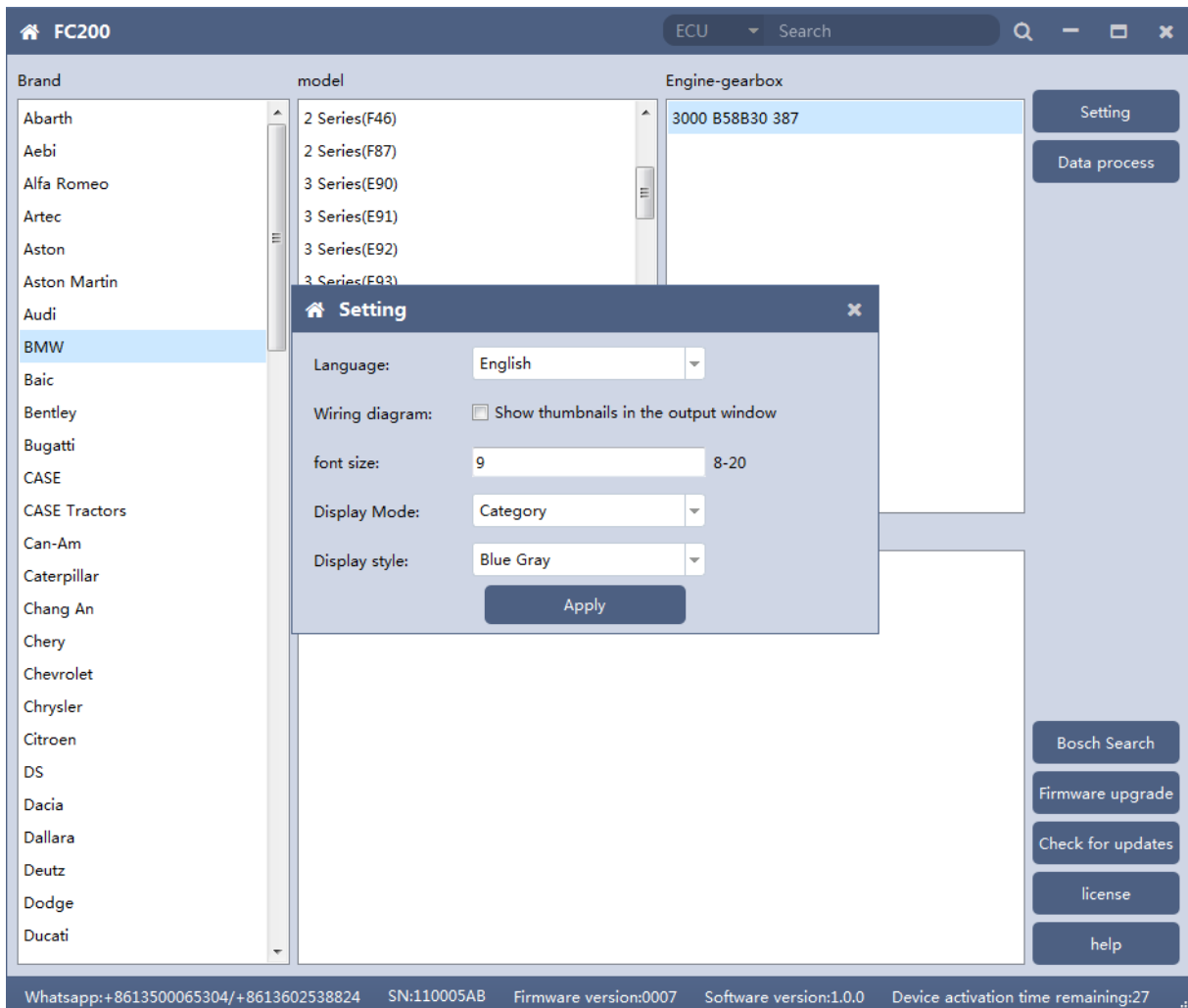


### The functions on the right are:

- Ⓞ **Setting** Set the language, font size and display type.
- Ⓞ **Firmware update** Firmware version update
- Ⓞ **Authorization info** FC200 software requires authorization before use
- Ⓞ **Use help** Open use document

## 1.1 Setting

- ⦿ **Language:** **Switch languages:** Simplified Chinese, Traditional Chinese, English, French ,Polish, and Spanish
- ⦿ **Font Size:** Enter the font size (the larger the number is, the larger the font will be ) Range: 8-20
- ⦿ **Display Method:** Select category display and merge display
- ⦿ **Display Style:** Blue-gray and dark blue



### 1.1.1 Display Method

- ⦿ Select category display

FC200 ECU Search

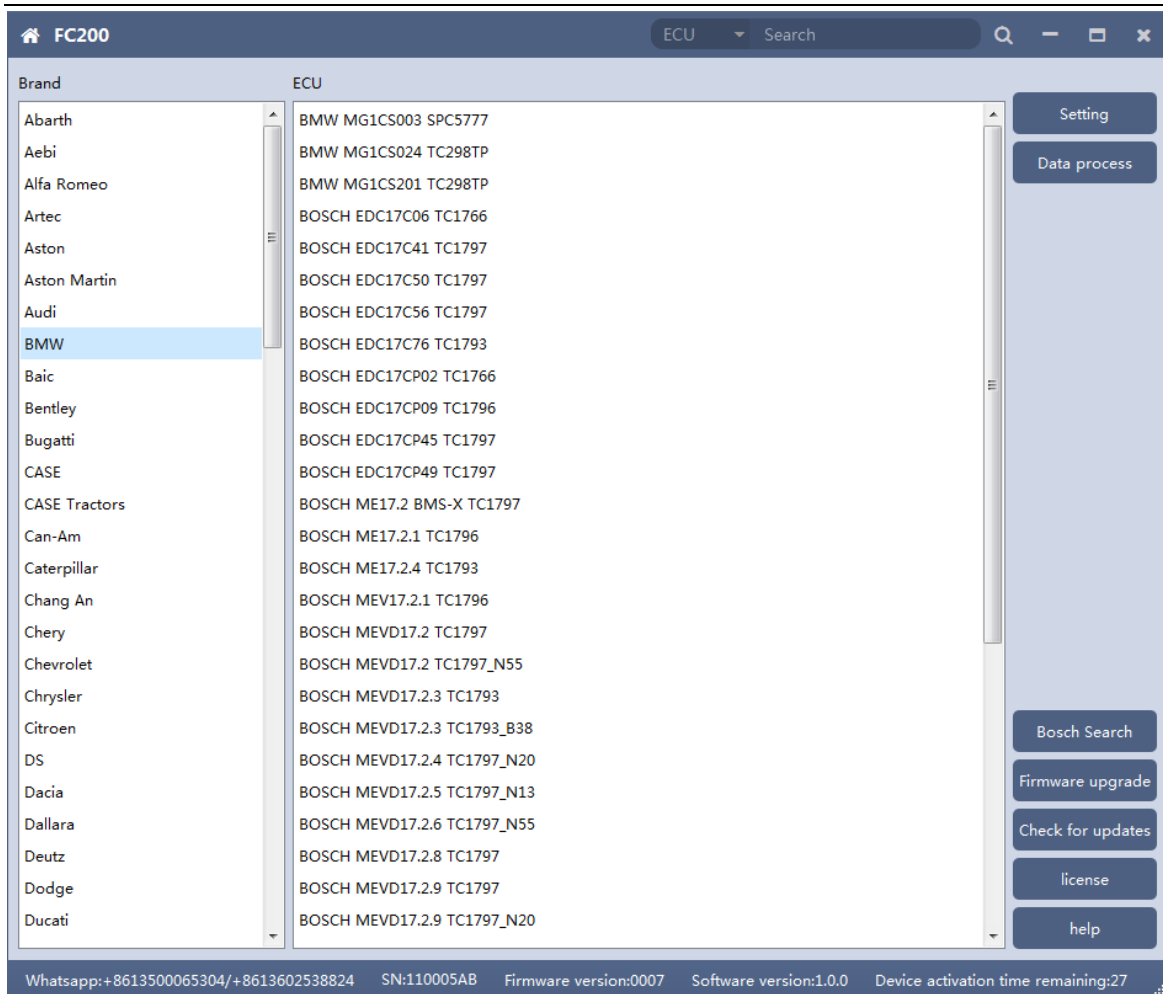
Brand	model	Engine-gearbox
Abarth	2 Series(F46)	3000 B58B30 387
Aebi	2 Series(F87)	
Alfa Romeo	3 Series(E90)	
Artec	3 Series(E91)	
Aston	3 Series(E92)	
Aston Martin	3 Series(E93)	
Audi	3 Series(F30)	
<b>BMW</b>	3 Series(F31)	
Baic	3 Series(F34)	
Bentley	3 Series(F35)	
Bugatti	3 Series(F80)	
CASE	3 Series(G20)	
CASE Tractors	3 Series(G21)	
Can-Am		
Caterpillar		
Chang An		
Chery		
Chevrolet		
Chrysler		
Citroen		
DS		
Dacia		
Dallara		
Deutz		
Dodge		
Ducati		

ECU  
BMW MG1CS024 TC298TP

Setting  
Data process

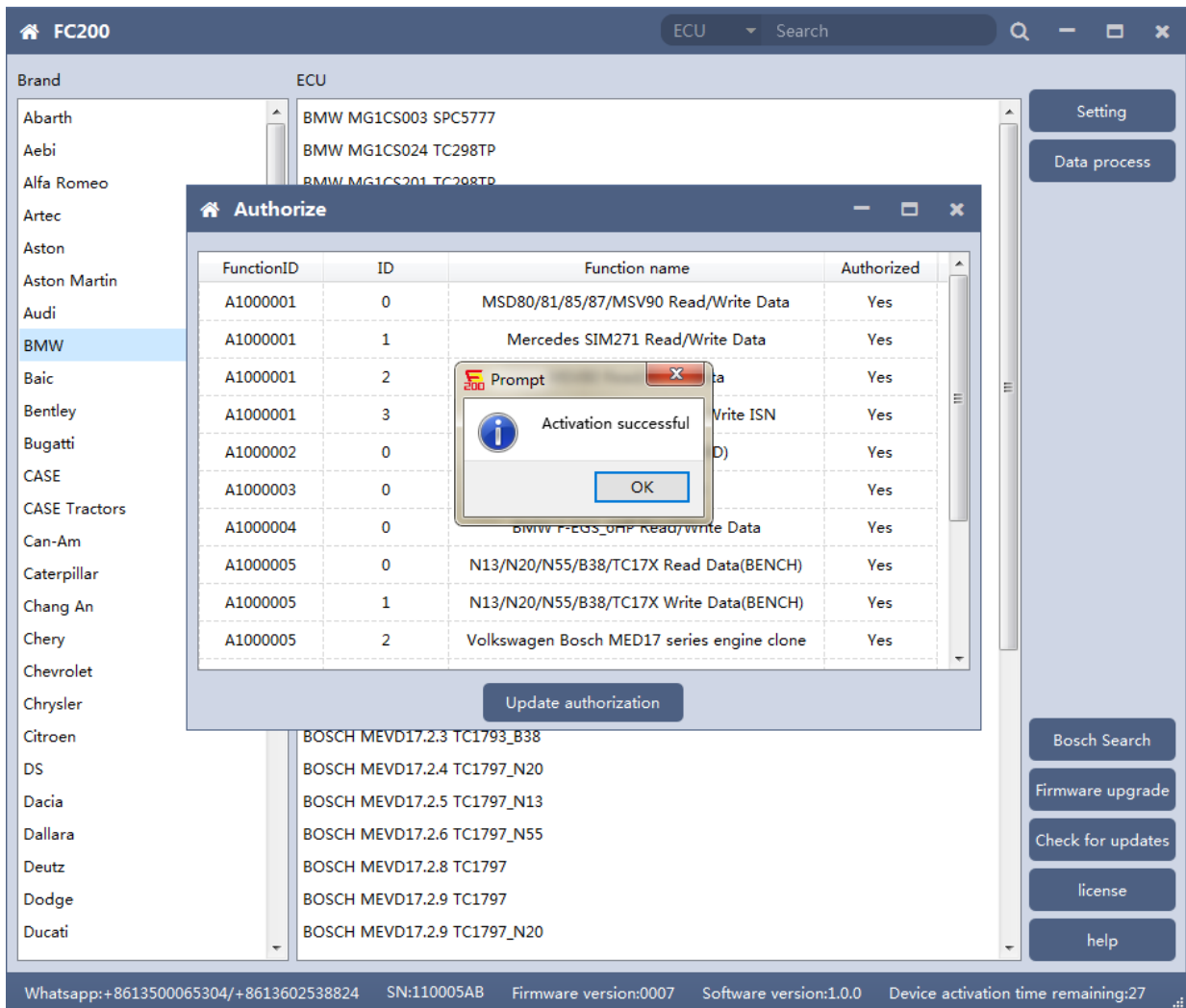
Bosch Search  
Firmware upgrade  
Check for updates  
license  
help

Whatsapp: +8613500065304/+8613602538824 SN:110005AB Firmware version:0007 Software version:1.0.0 Device activation time remaining:27



## 1.2 Device Authorization

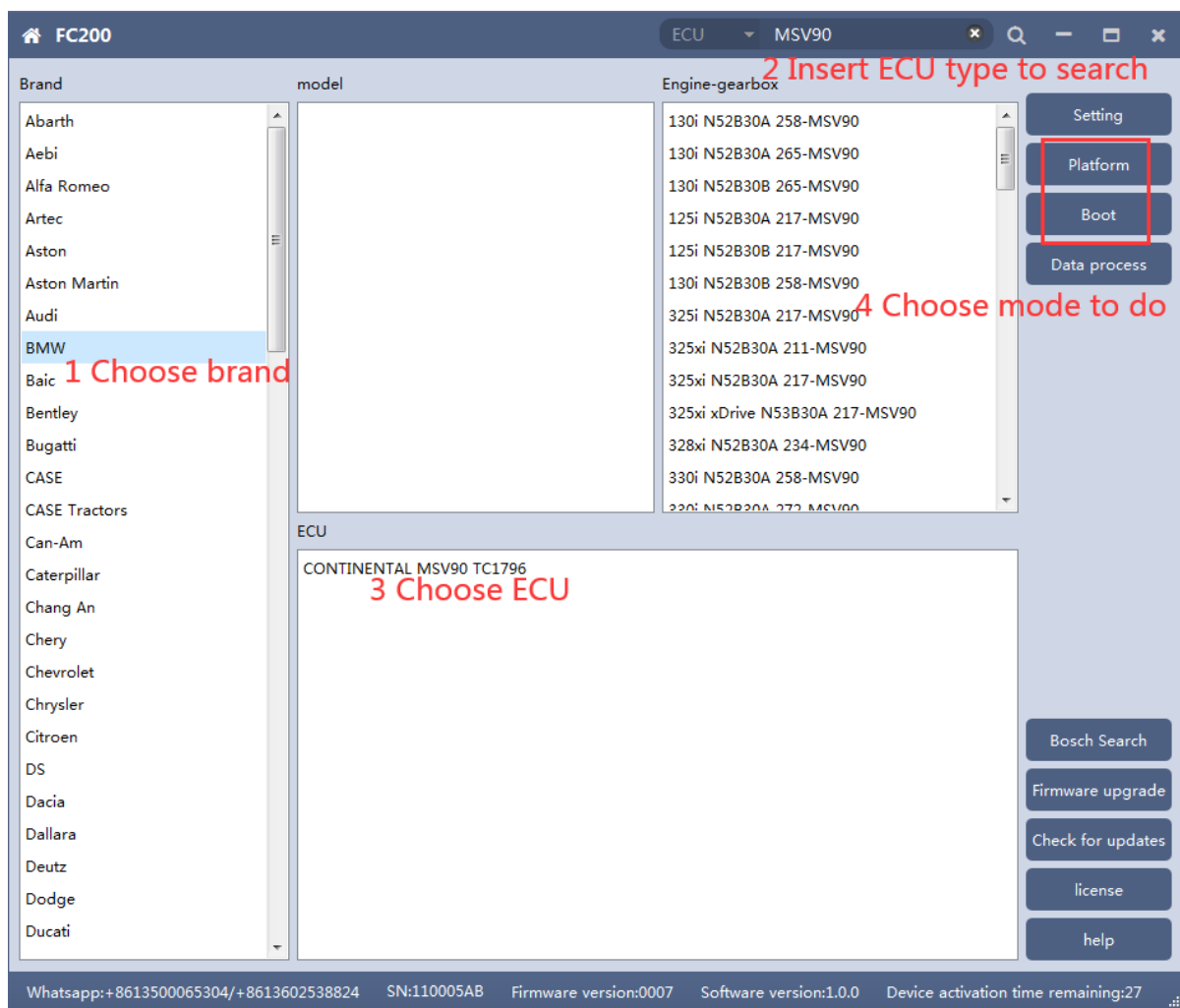
- ⦿ FC200 software requires authorization before use
- ⦿ Click Authorization Information button on the main interface to view the authorization list
- ⦿ Click the Update Authorization button



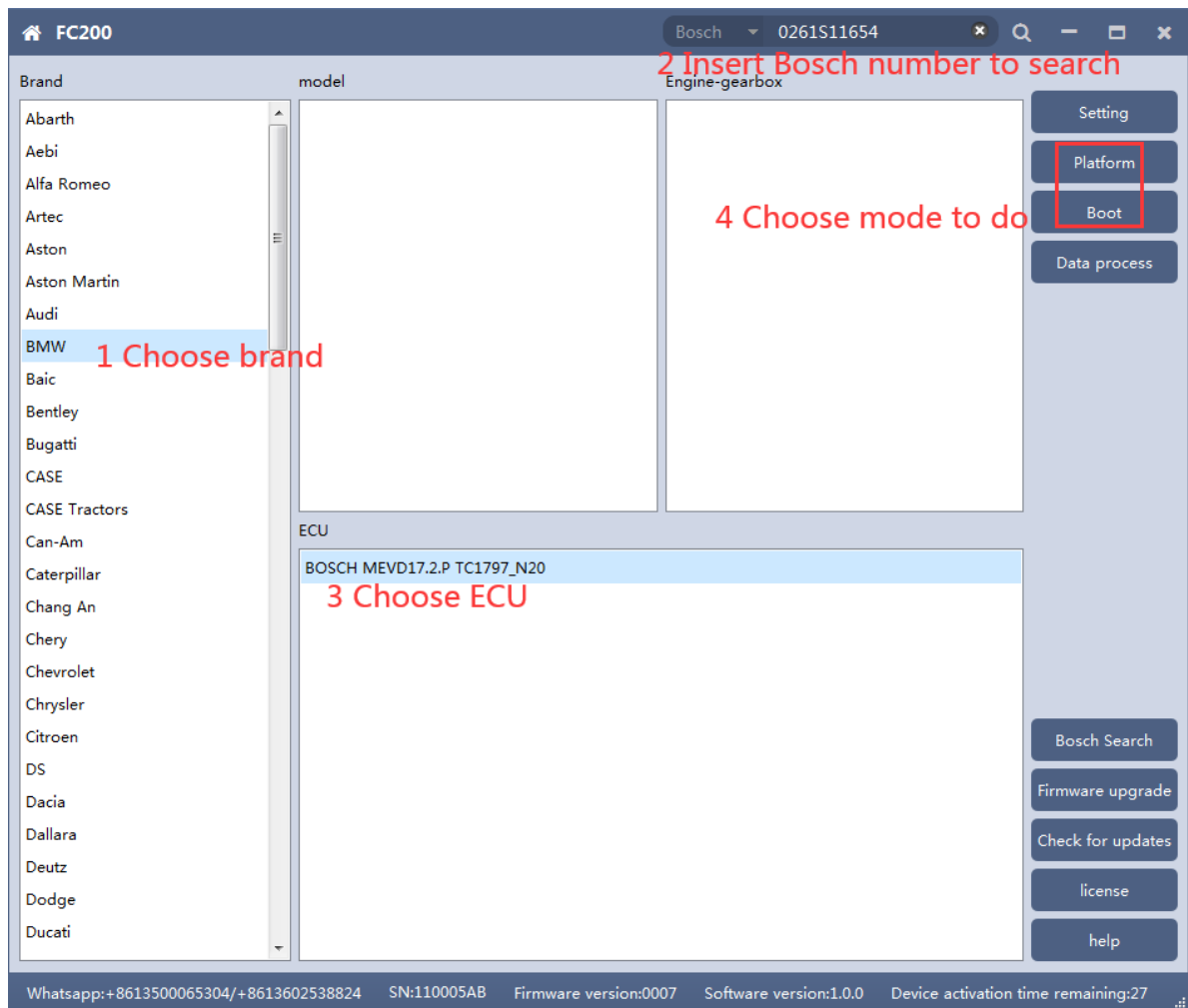
⦿ If "No" is still displayed after updating authorization, please contact your seller for further help.

### 1.3 Device search function (frequently-used)

⦿ ECU search



© Bosch number search



④ **Bosch number query (click “Bosch search” )**

FC200 Bosch Search

Brand	model	Engine-gearbox
Abarth	1 Series(E81)	218d B47D20A 150
Aebi	1 Series(E82)	218d N47D20C 143
Alfa Romeo	1 Series(E87)	218i B38B15A 136
Artec	1 Series(E88)	220d B47D20A 190
Aston	1 Series(F20)	220d N47D20C 184
Aston Martin	1 Series(F21)	220d xDrive B47D20A 190
Audi	2 Series(F22)	220i B48A20A 192
<b>BMW</b>	2 Series(F23)	220i B48B20A 187
Baic	2 Series(F45)	225d B47D20B 224
Bentley	2 Series(F46)	225d N47D20D 218
Bugatti	2 Series(F87)	228i N20B20A 242
CASE	3 Series(E90)	228i N20B20A 245
CASE Tractors	3 Series(E91)	228i N26B20A 243 MFD90
Can-Am		
Caterpillar		
Chang An		
Chery		
Chevrolet		
Chrysler		
Citroen		
DS		
Dacia		
Dallara		
Deutz		
Dodge		
Ducati		

ECU

Setting

Data process

**Bosch Search**

Firmware upgrade

Check for updates

license

help

Whatsapp:+8613500065304/+8613602538824 SN:110005AB Firmware version:0007 Software version:1.0.0 Device activation time remaining:27

carprolife.cn:19320/bosch.htm

## 博世号查询

0261S10525

ECU类型:ME 17.5.22

Note : Keep the "space" when you insert into Bosch search

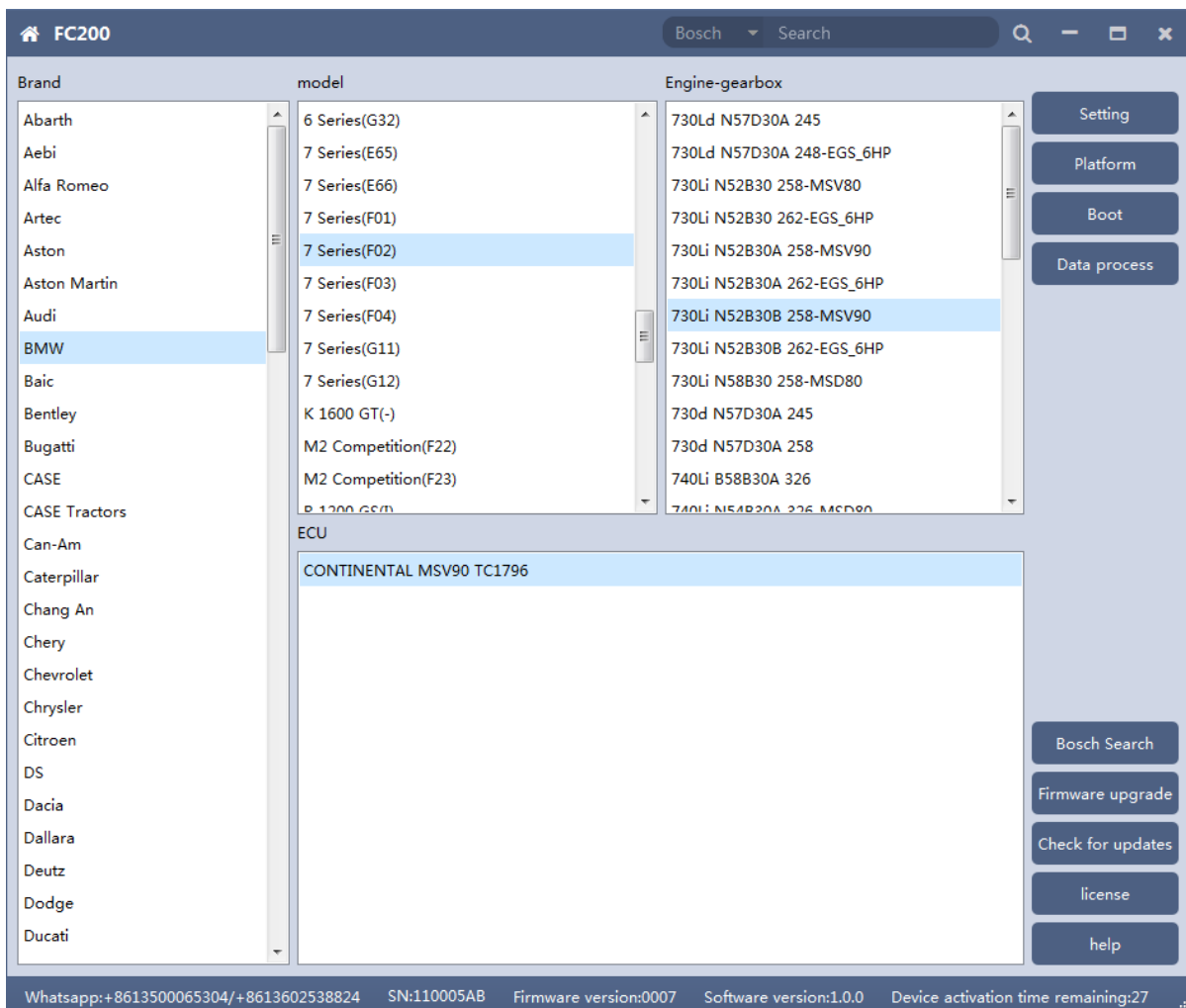




## 2. MSV90/80/MSD87/85/ 81/80/SIM271

FC200 currently supports the cloning and ISN reading of BMW models MSV90/80/MSD87/85/81/80 (E series, F series) and Mercedes-Benz SIM271 ECU.

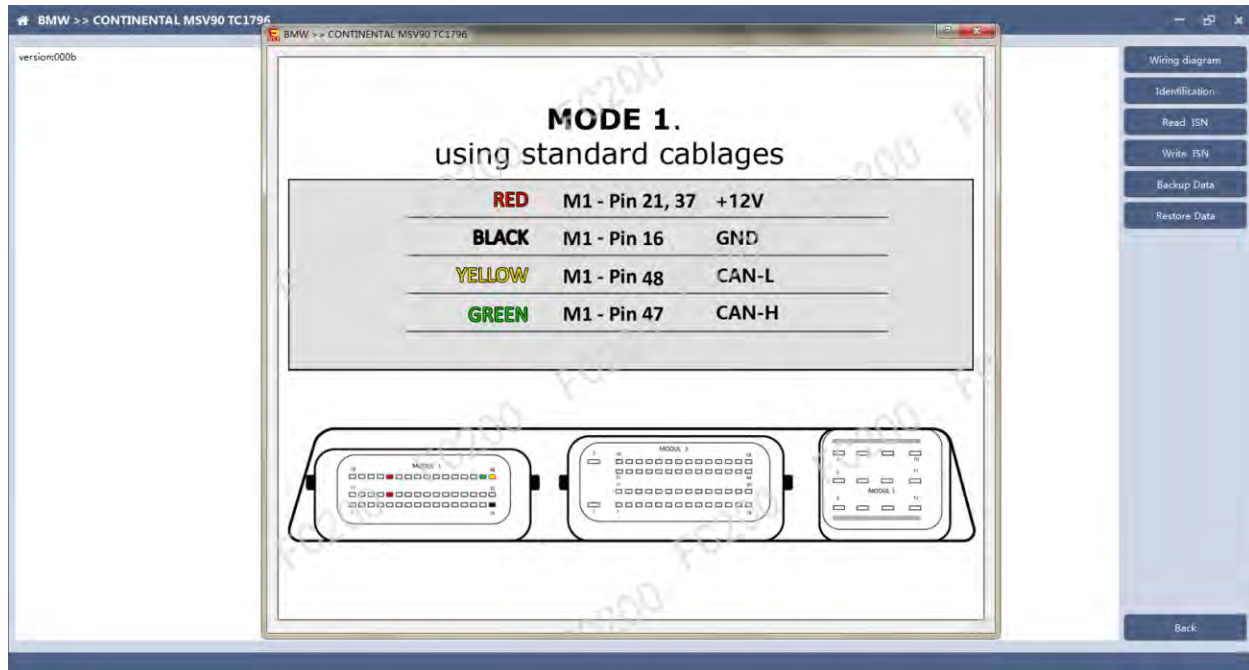
**2.1 Determine the type of ECU according to the vehicle model, and select the correct model, otherwise, the normal operation will be stopped. The MSV90 is used for the description below.**



After selecting the correct ECU model, the "Platform" button will pop up on the right. As shown in the picture above, click the "Platform" button

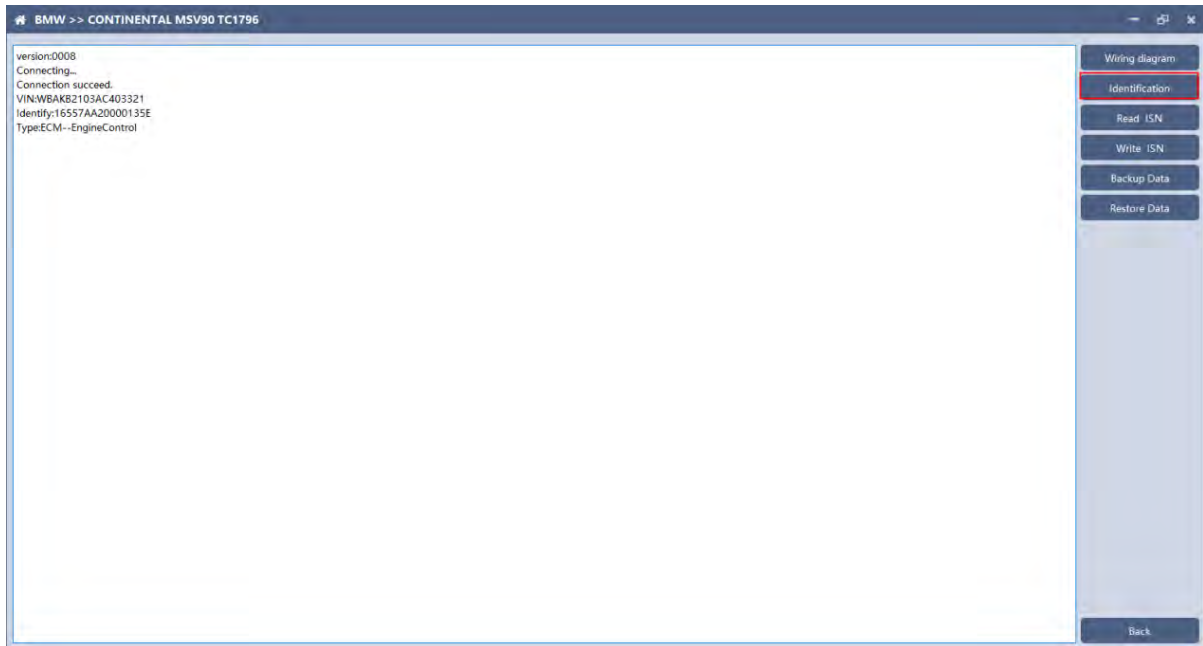
to enter the ECU operation interface.

## 2.2 View wiring diagram



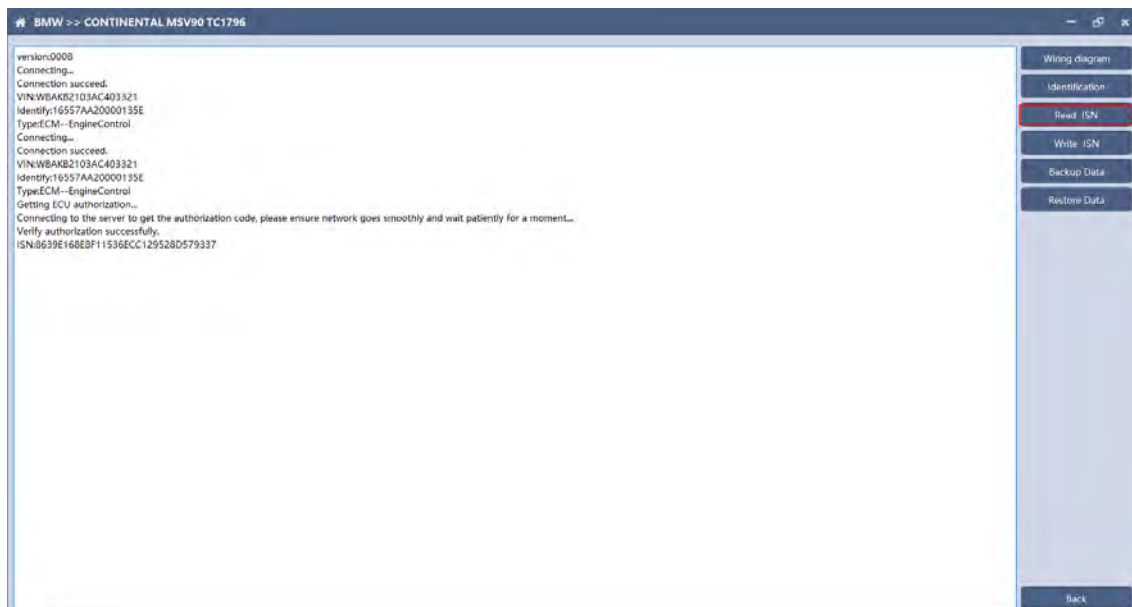
Click the "Wiring Diagram" button to view the ECU wiring diagram, connect the wiring harness correctly according to the wiring diagram, and connect with FC200, plug in DC12V interface of FC200 with 12V power supply.

## 2.3 Identifying the ECU



Click the "Identify" button to read the ECU-related information, as shown in the picture above.

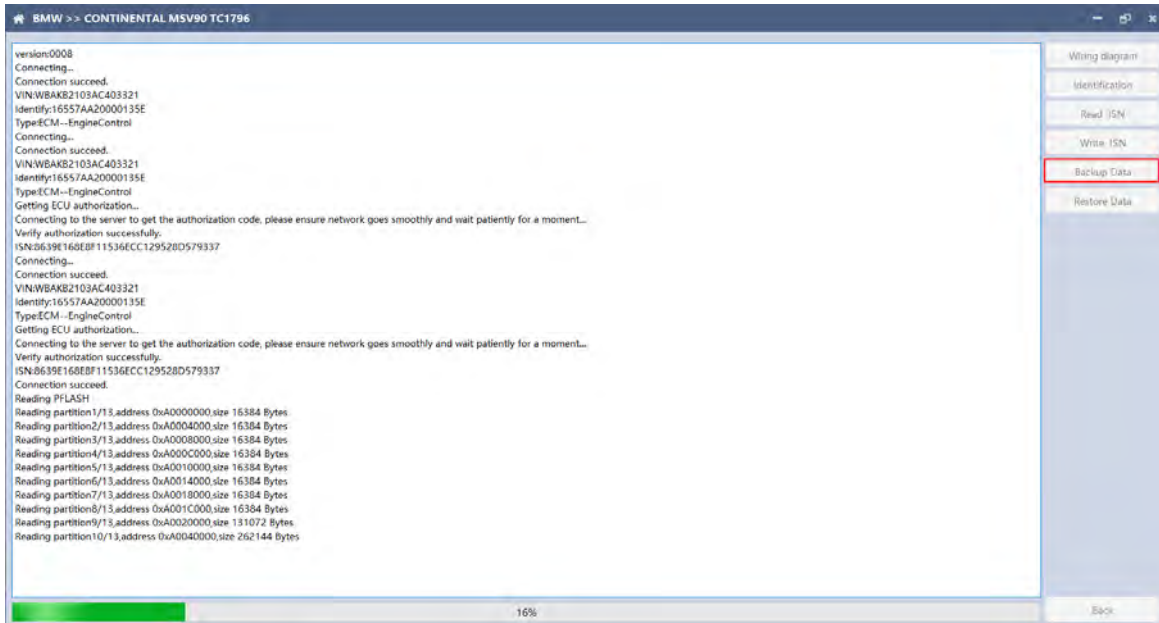
## 2.4 Reading ISN



Click the "Read ISN" button to read the ISN.

**Note:** This operation needs network connection.

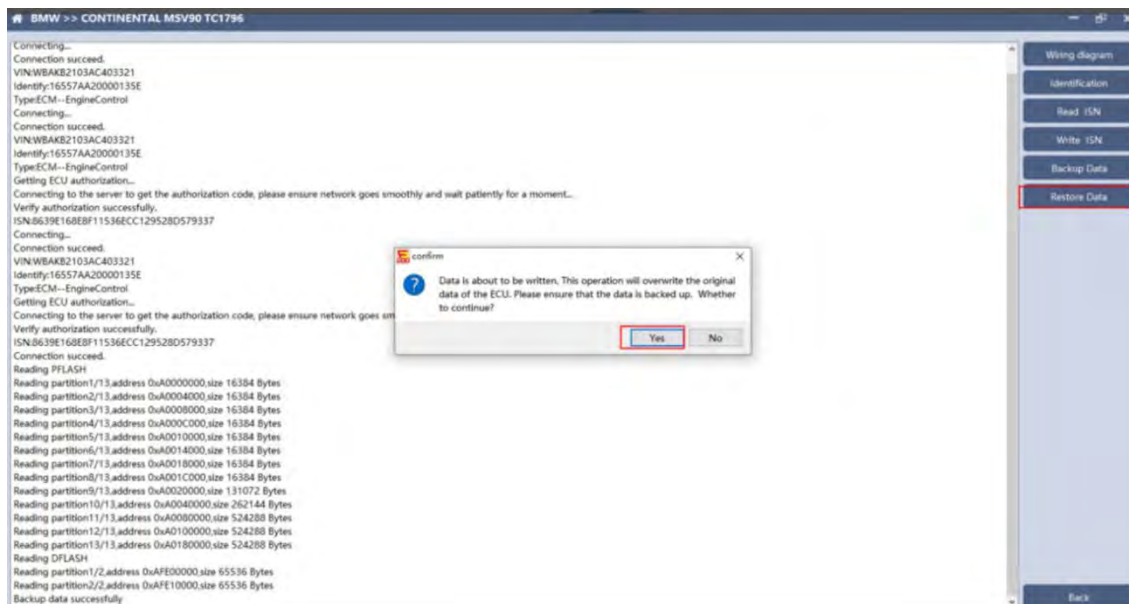
## 2.5 Backup Data



Click "Backup Data" to back up the ECU data. After reading, please save the data for subsequent use.

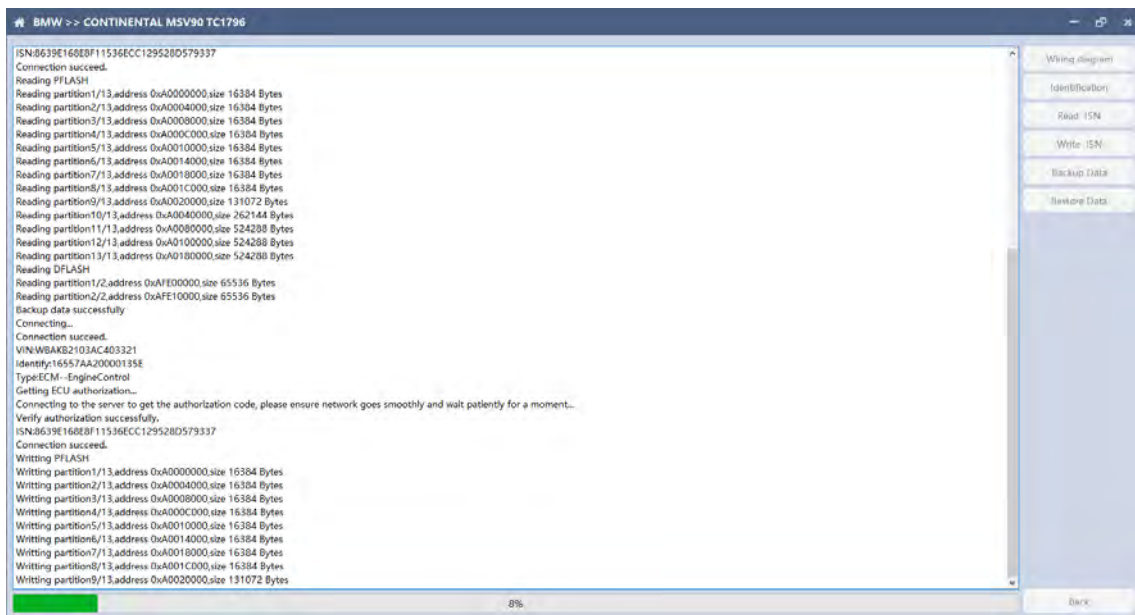
**Note: This operation needs network connection.**

## 2.6 Data Restore



Click "Restore Data" to write the ECU data. Before writing, please make sure the data is backed up. The restored data will overwrite the current ECU data.

The data can be the data of the current ECU or other ECU with same type.



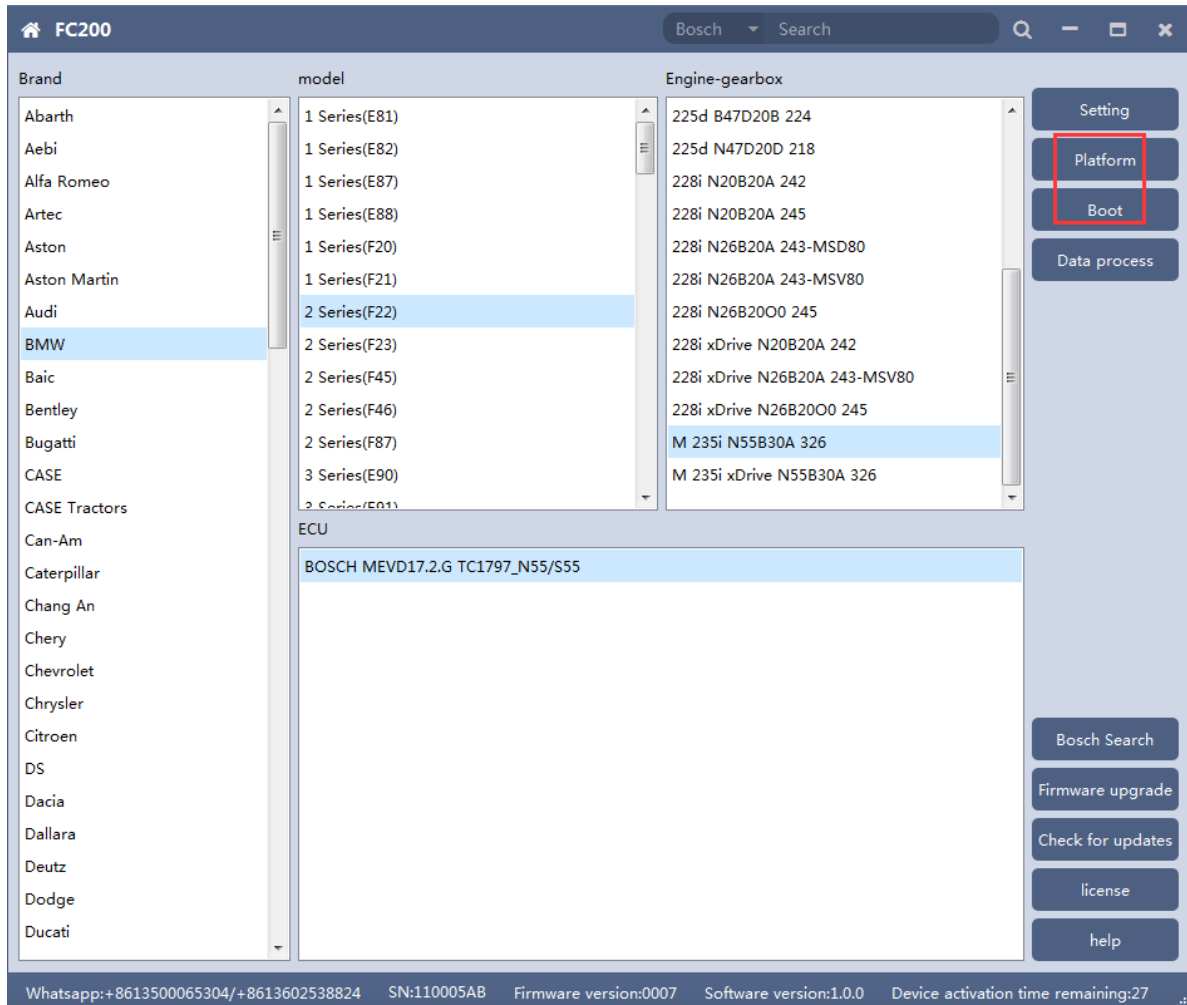
**Note:** During the process of data recovery, please do not disconnect the device power or disconnect the device, otherwise, the ECU may be damaged.

If the software is unexpectedly shut down or the computer is shut down or crashed unexpectedly during the process of data recovery, please do not disconnect the device power supply or device Connect for 15 minutes, and the device can complete data recovery independently.

### 3. N13/N20/N55/B38/TC17X

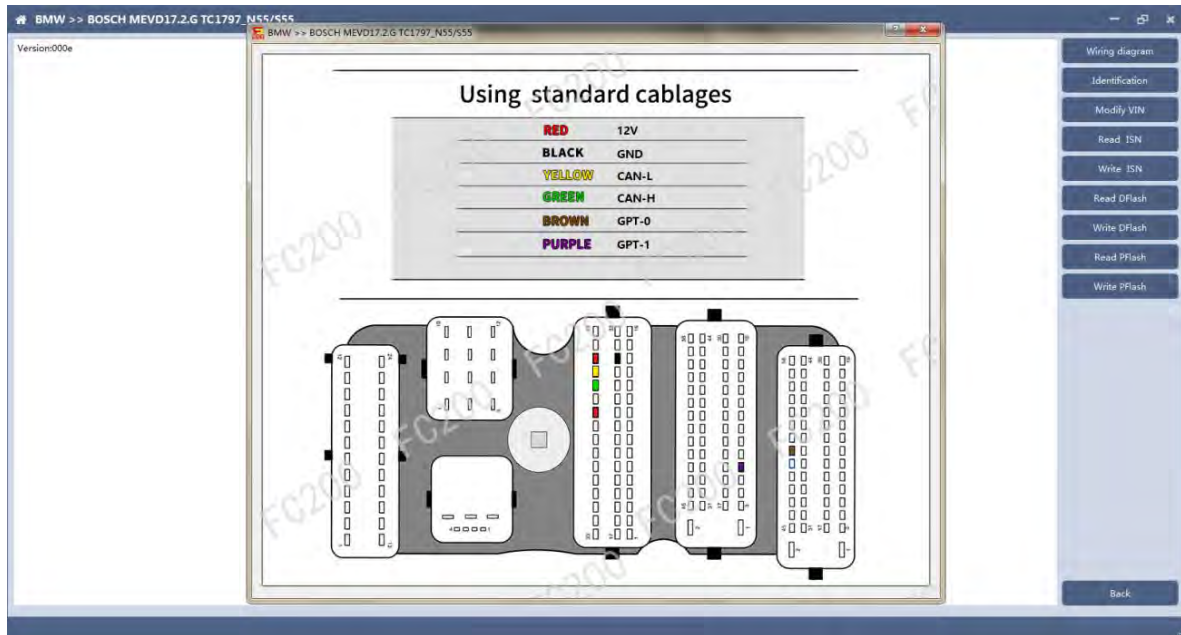
The FC200 currently supports ISN read / write, VIN modification, and data read / write functions for the N13 / N20 / N55 / B38 / TC17X F series chassis of BMW models.

### 3.1 Determine the ECU type according to the vehicle model, and select the correct model, otherwise, it will not be operated normally. Take N55 as an example:



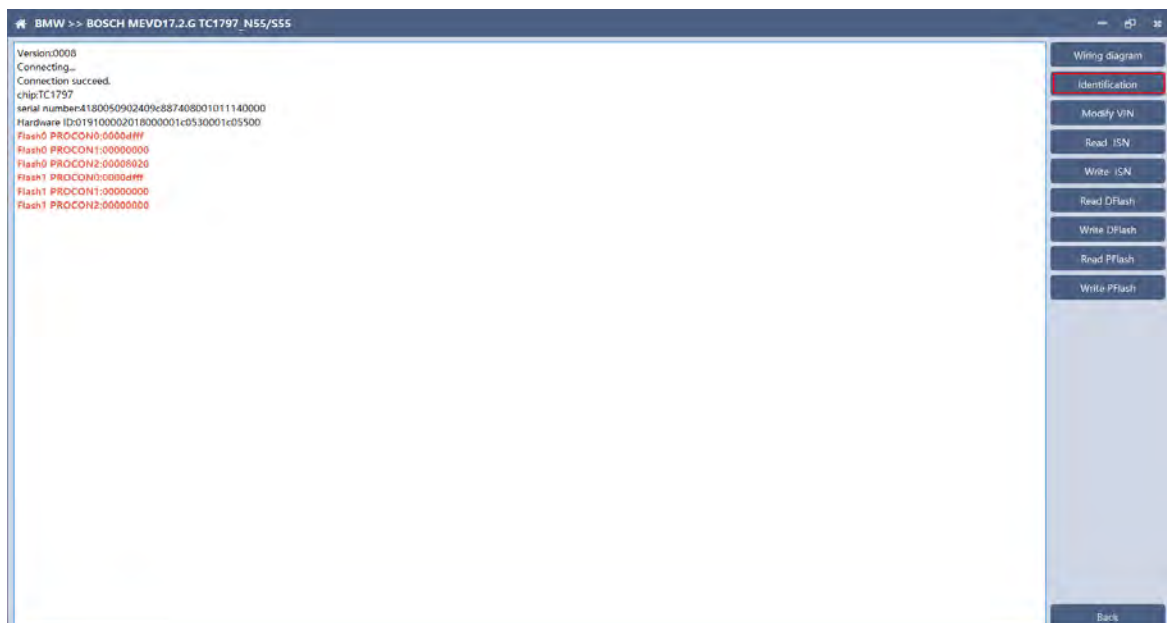
After selecting the correct ECU model, the "Platform" button will pop up on the right. As shown in the picture above, click the "Platform" button to enter the ECU operation interface.

## 3.2 View wiring diagram



Click the "Wiring Diagram" button to view the ECU wiring diagram, connect the wiring harness correctly according to the wiring diagram, and connect with FC200, plug in DC12V interface of FC200 with 12V power supply.

## 3.3 Identify the ECU



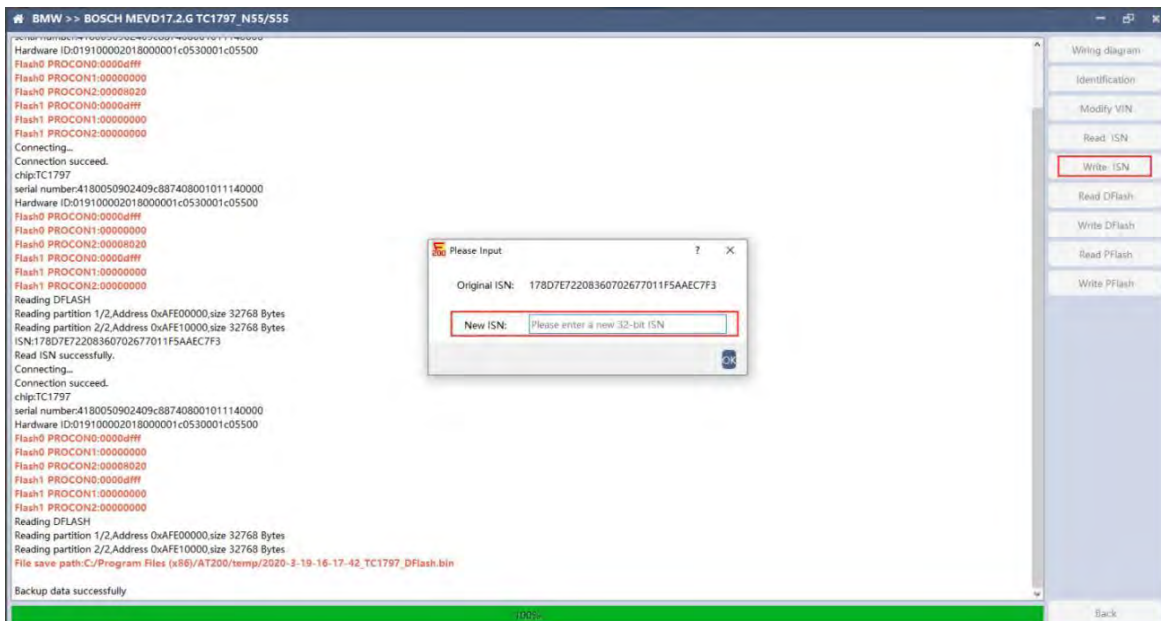
Click the "Identification" button to read the ECU-related information, as shown in the picture above.

### 3.4 Reading ISN



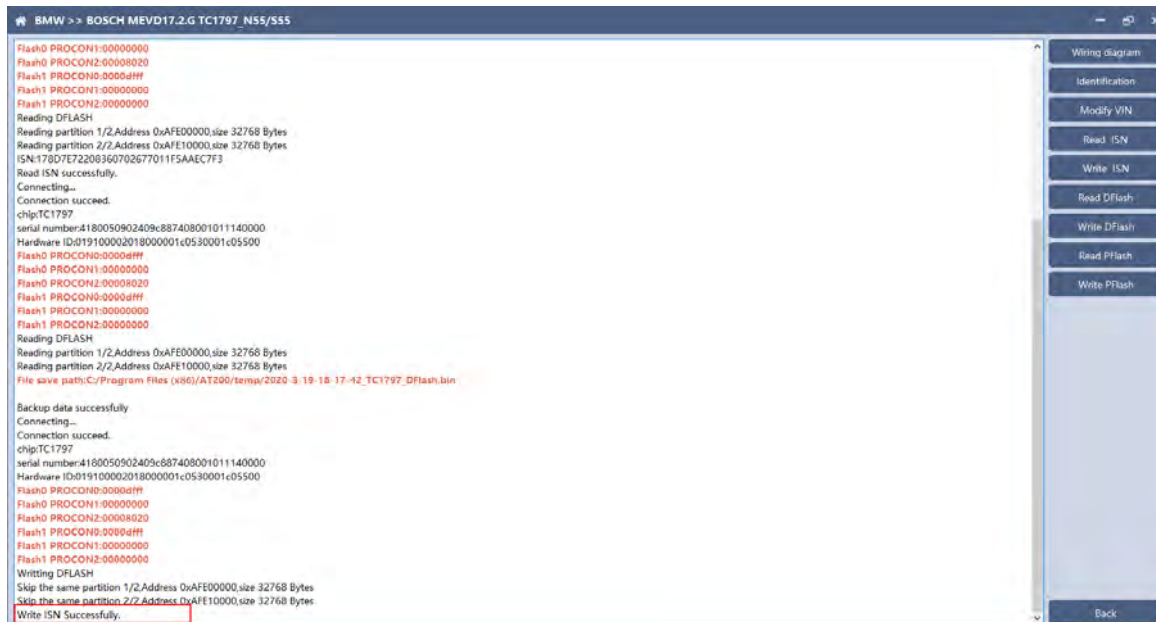
Click the "Read ISN" button to start reading the ISN. Wait for a while to complete the reading of the ISN.

### 3.5 Writing ISN



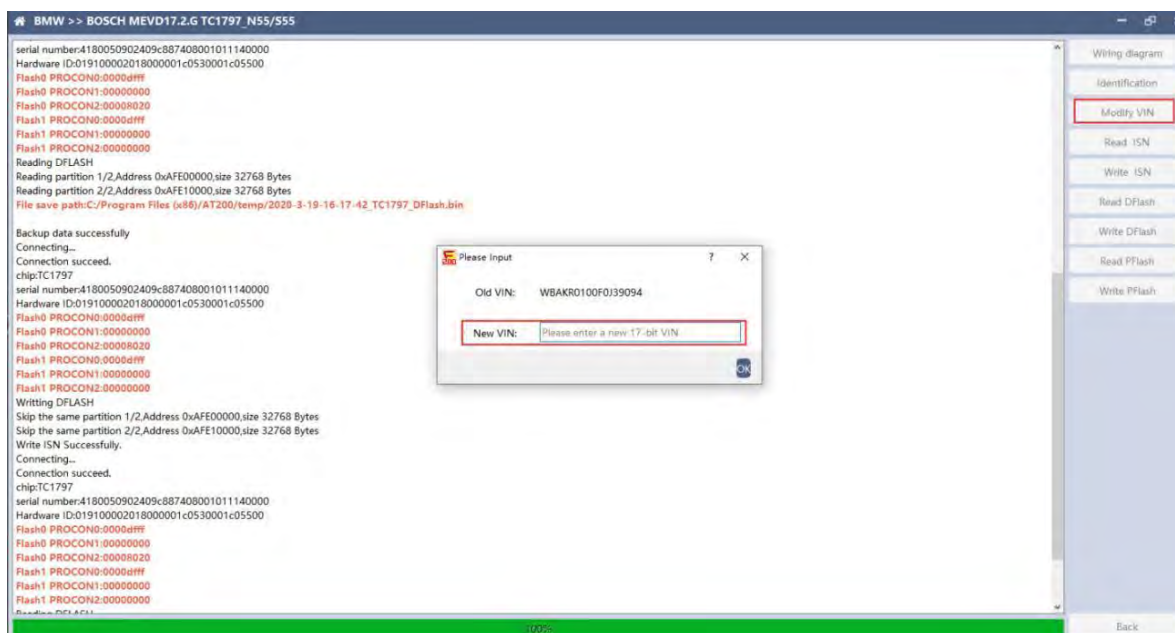


Enter the new ISN in the edit box, and click the "OK" button to start writing the ISN.



Writing successfully.

### 3.6 Modifying VIN

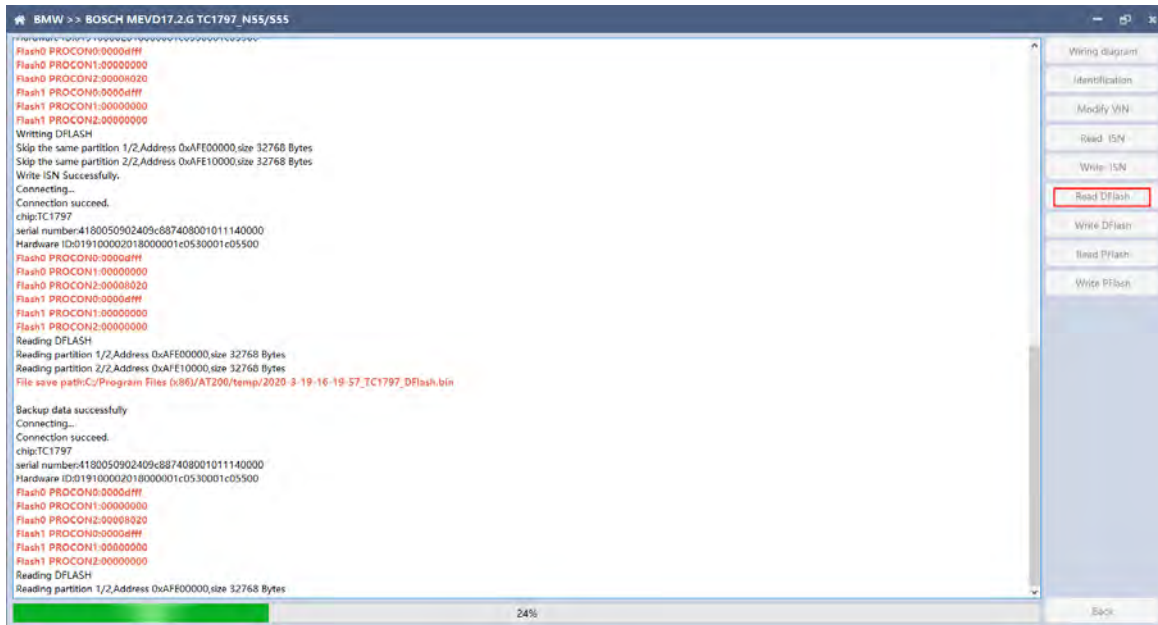


Enter the new VIN in the edit box, click the "OK" button to start writing

VIN

### 3.7 Reading DFlash, PFlash

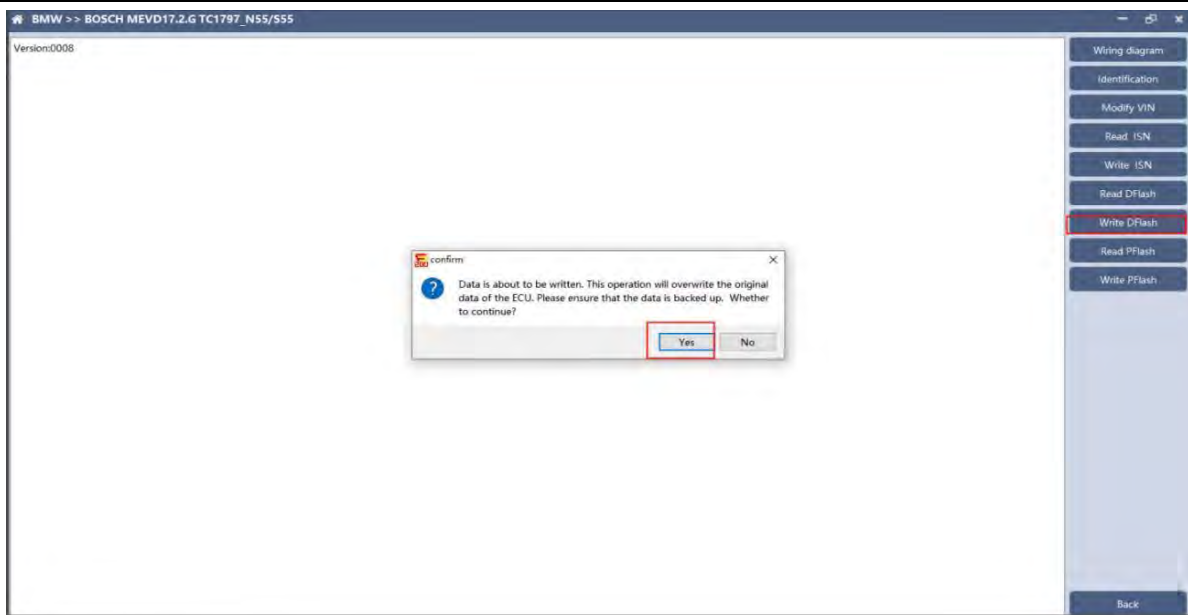
Take reading DFlash as an example:



Click "Backup Data" to back up the ECU data. After reading, please save the data for subsequent use.

### 3.8 Writing DFlash, PFlash

Take writing DFlash as an example



Click "write DFlash" to write the ECU data. Please make sure the data is backed up before writing. The restored data will overwrite the current ECU data. The data can be the data of the current ECU or other ECU of the same type.



Note: During the data recovery process, it is strictly forbidden to disconnect the power supply or disconnect the device, otherwise it may cause ECU damage; if the software is shut down unexpectedly or the computer is shut down or crashed unexpectedly during the data recovery

---

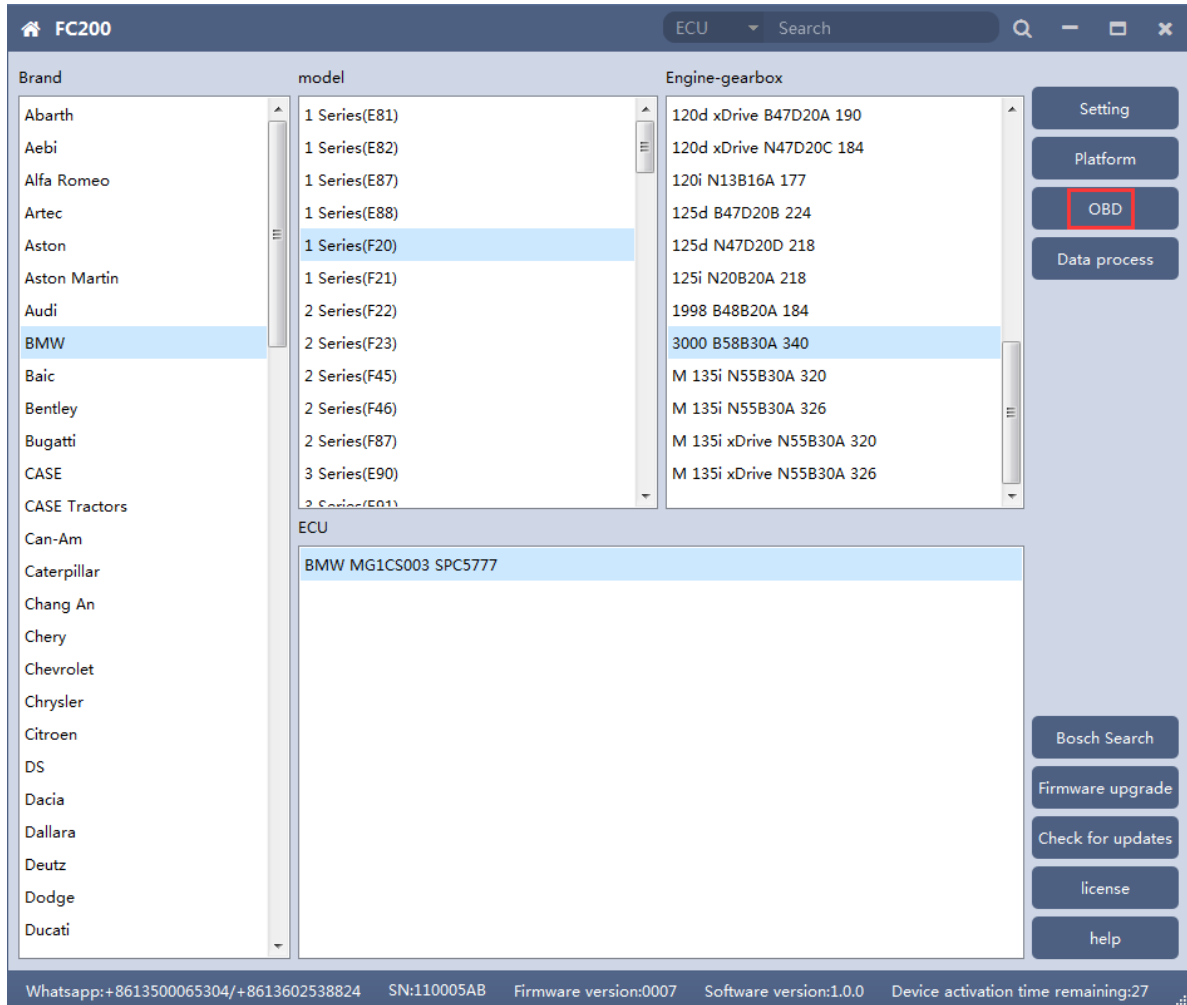
process, please do not disconnect the power supply or device Connect for 15 minutes, and the device can complete data recovery independently.

#### **4. B48/B58**

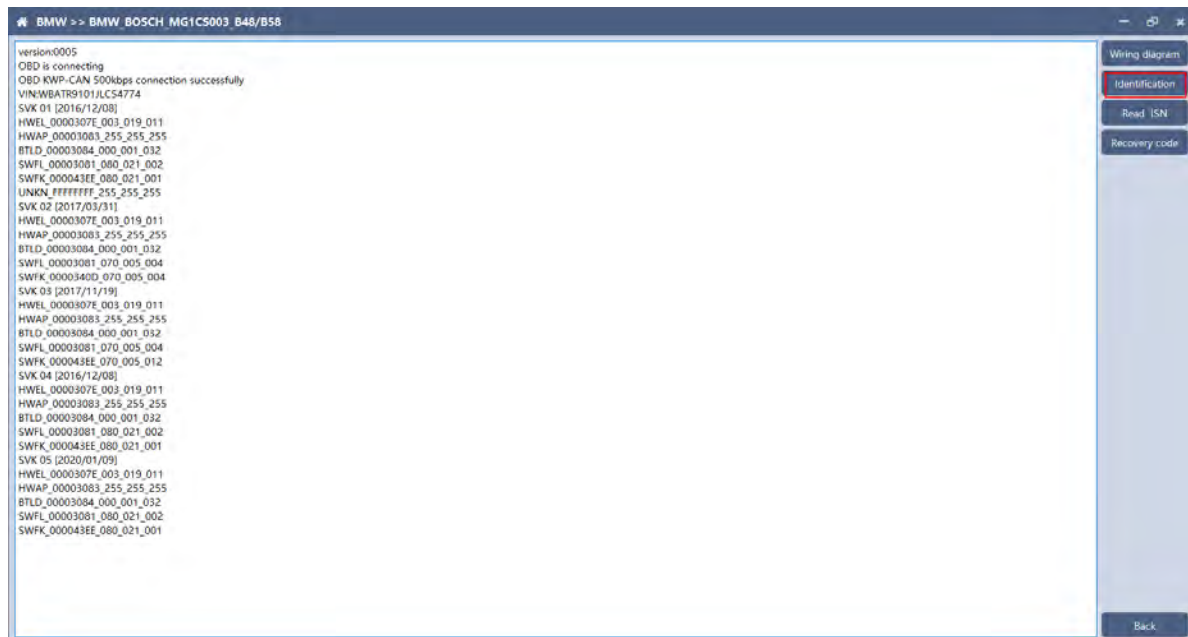
FC200 currently supports the OBD reading ISN of BMW F020 and G series S15 models B48 and B58, and the platform SPC5777 chip and TC298 chip reading ISN and reading and writing EEPROM and FLASH.

## 4.1 OBD read ISN

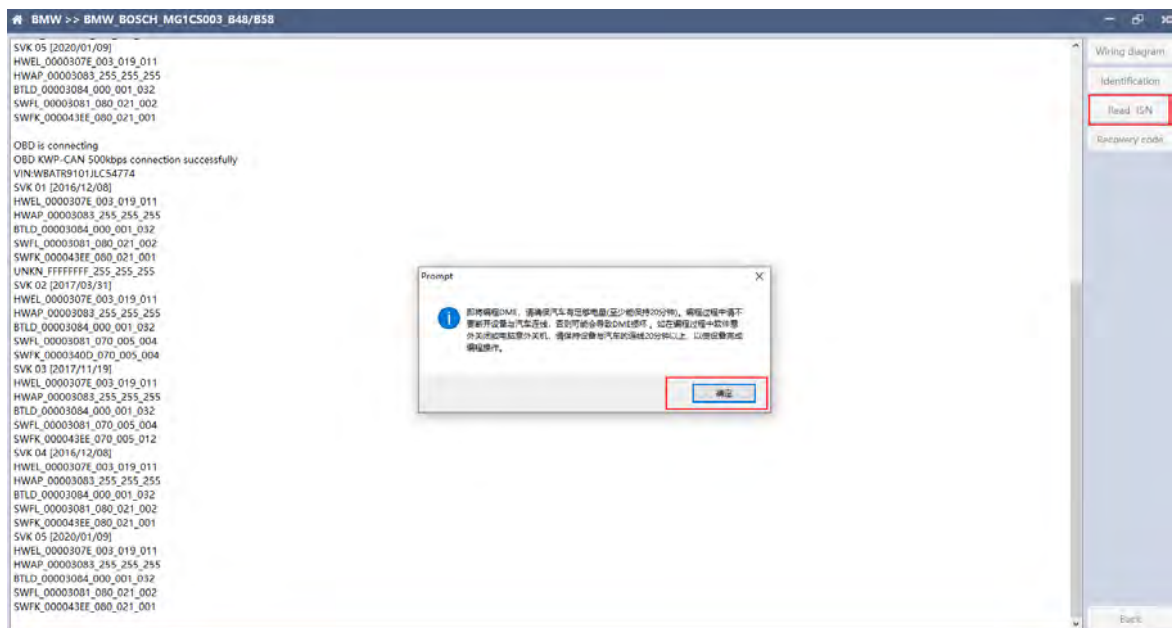
4.1.1 Determine the type of ECU according to the model, and select the correct model, otherwise it will not operate normally. The following is described with B48.



## 4.1.2 Identifying ECU



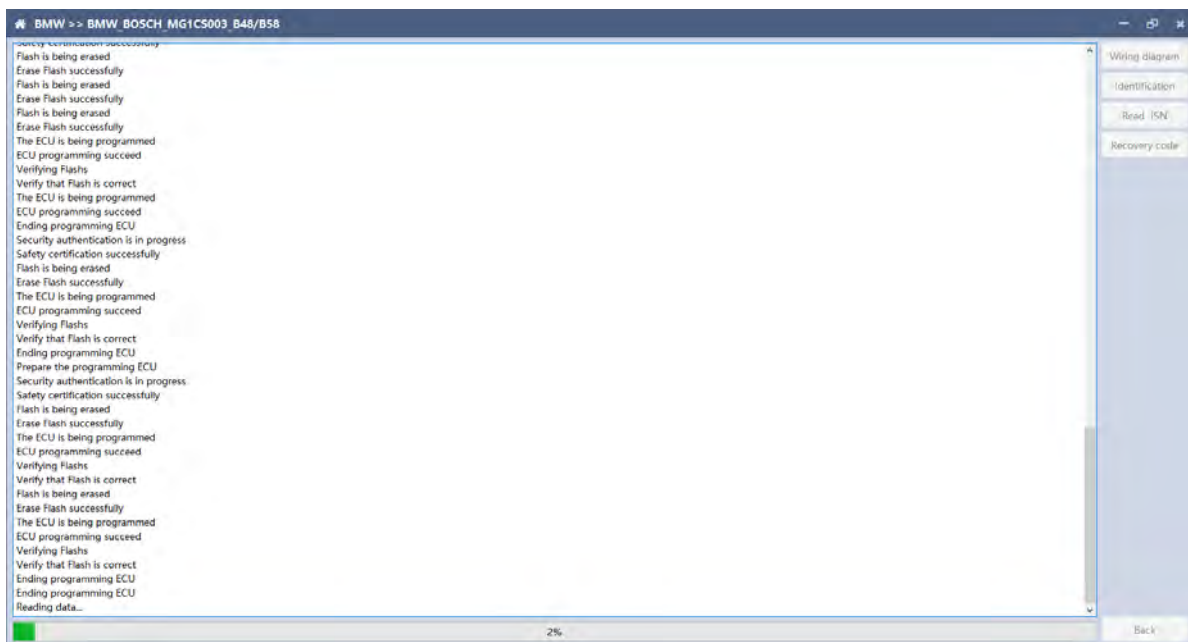
## 4.1.3 Reading ISN



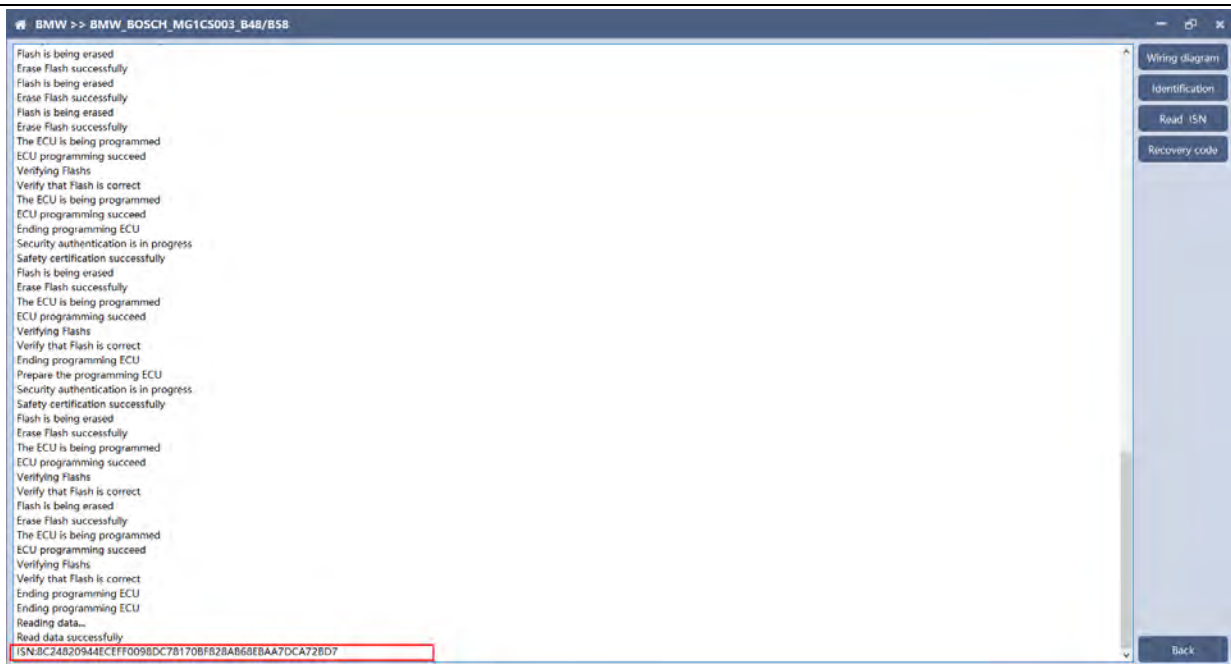
Click the "Read ISN" button to start reading the ISN. If it is the first reading, you need to program the ECU before reading. The programming time will take about 25 minutes, please be patient.

**Note:** During the programming process, it is strictly forbidden to

disconnect the power supply of the device or disconnect the device wiring, otherwise it may cause damage to the ECU; if the software is closed unexpectedly or the computer is shut down or crashed unexpectedly during data restore, please do not disconnect the device power or device connection On-line, hold for more than 25 minutes, the device can complete programming independently.



After the programming is completed, if there is a coding file before the ECU programming, the coding recovery will be performed automatically. After programming, the software starts to read data, as shown in the figure above.

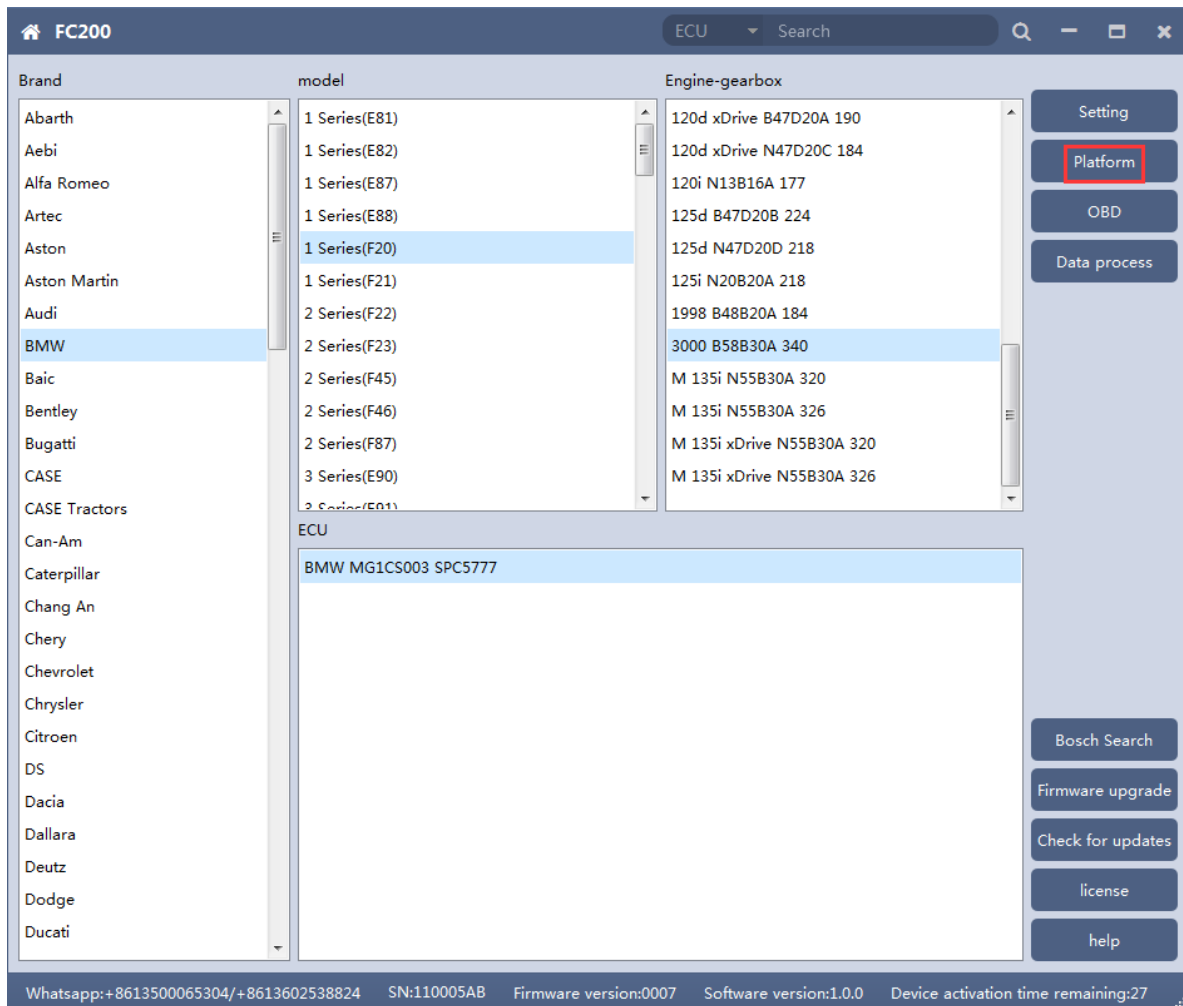


Finish reading the ISN.



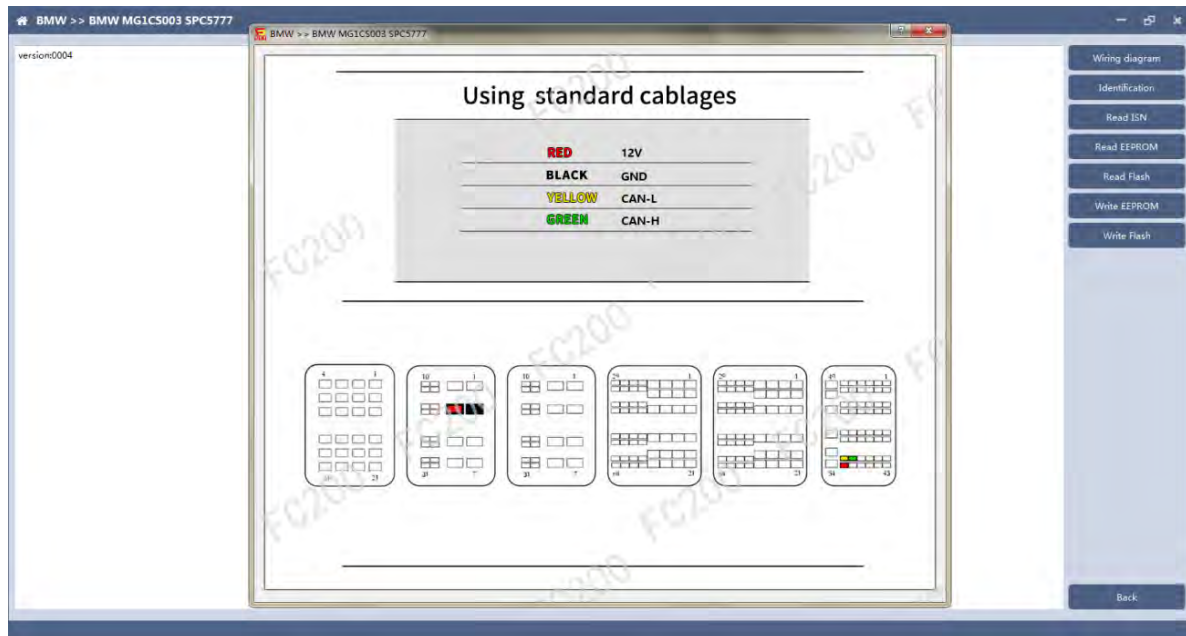
## 4.2 Read ISN on bench

4.2.1 Determine the type of ECU according to the model, and select the correct model, otherwise it will not operate normally. The wrong choice of the two types of chips will have no effect.



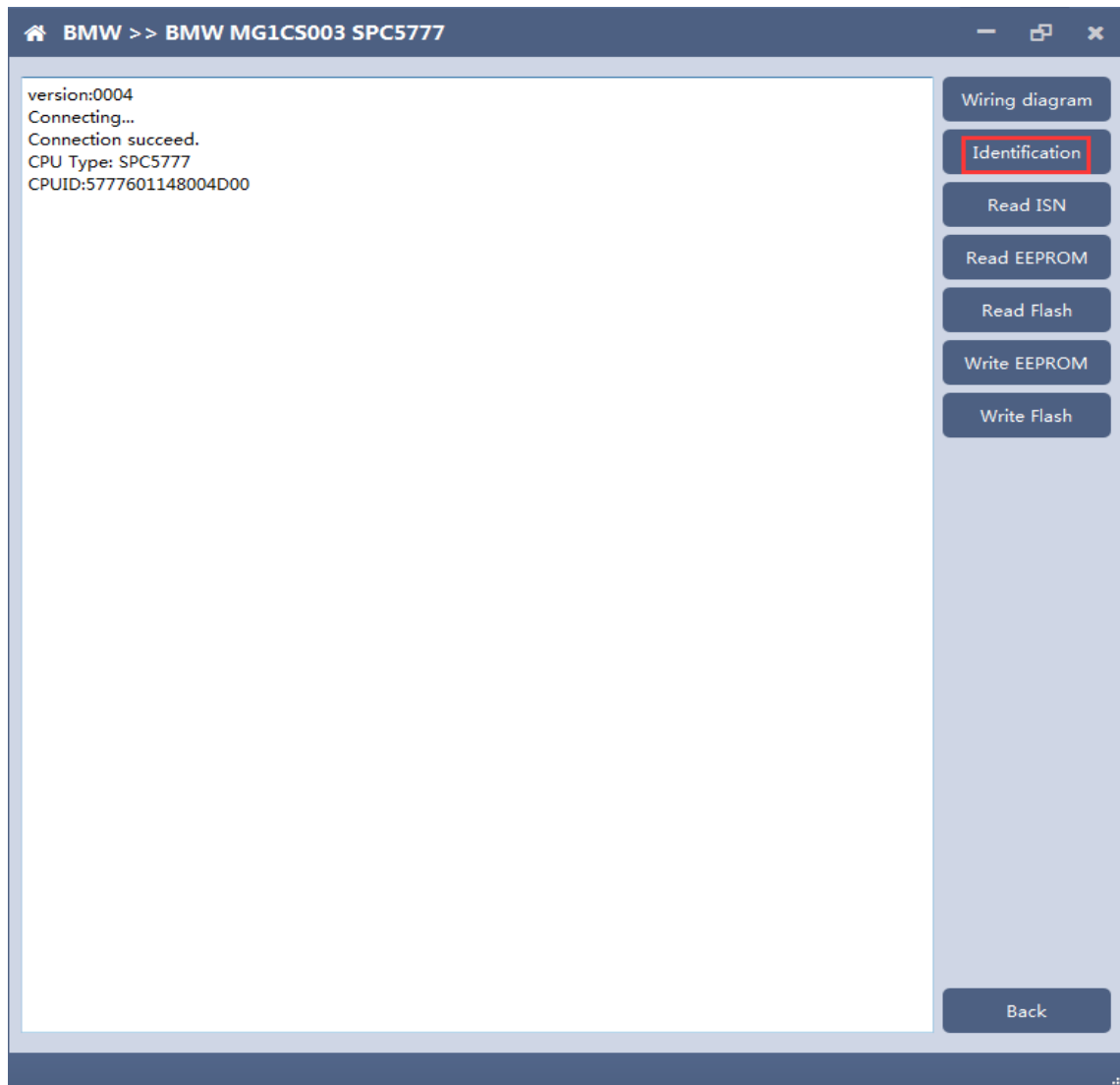
After selecting the correct ECU model, the "Platform" button will appear on the right. As shown in the figure above, click the "Platform" button to enter the ECU operation interface.

## 4.2.2 View wiring diagram

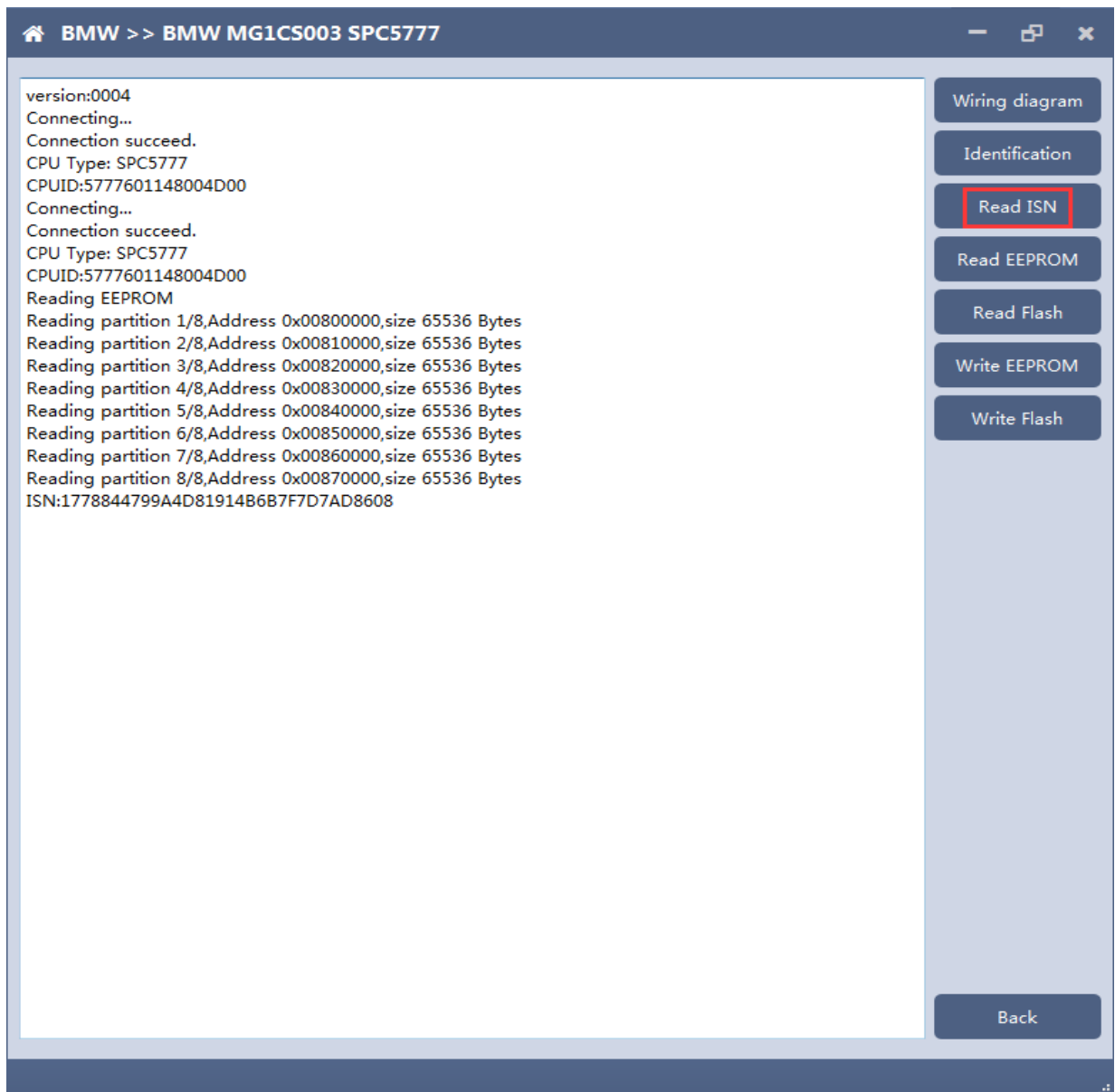


Click the "Wiring Diagram" button to view the ECU wiring diagram, connect the wiring harness correctly according to the wiring diagram, and connect with the device, plug in the device DC12V interface with 12V power supply.

## 4.2.3 Identifying the ECU

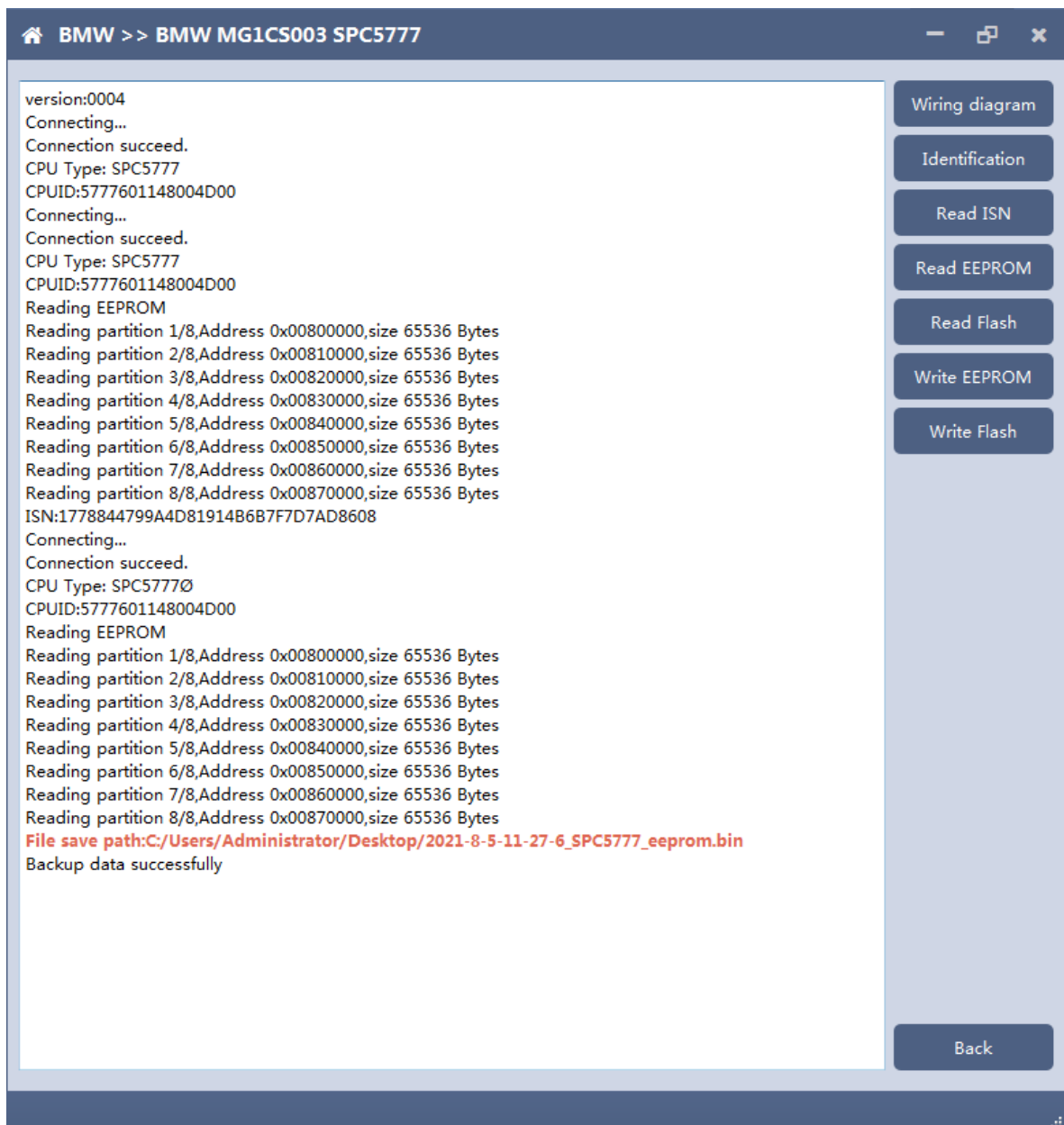


## 4.2.4 Reading ISN



## 4.2.5 Reading EEPROM/Flash

Take reading EEPROM as an example



## 4.2.6 Writing EEPROM/Flash

Take reading EEPROM as an example. **Make sure to save a copy of the original data before writing data.**

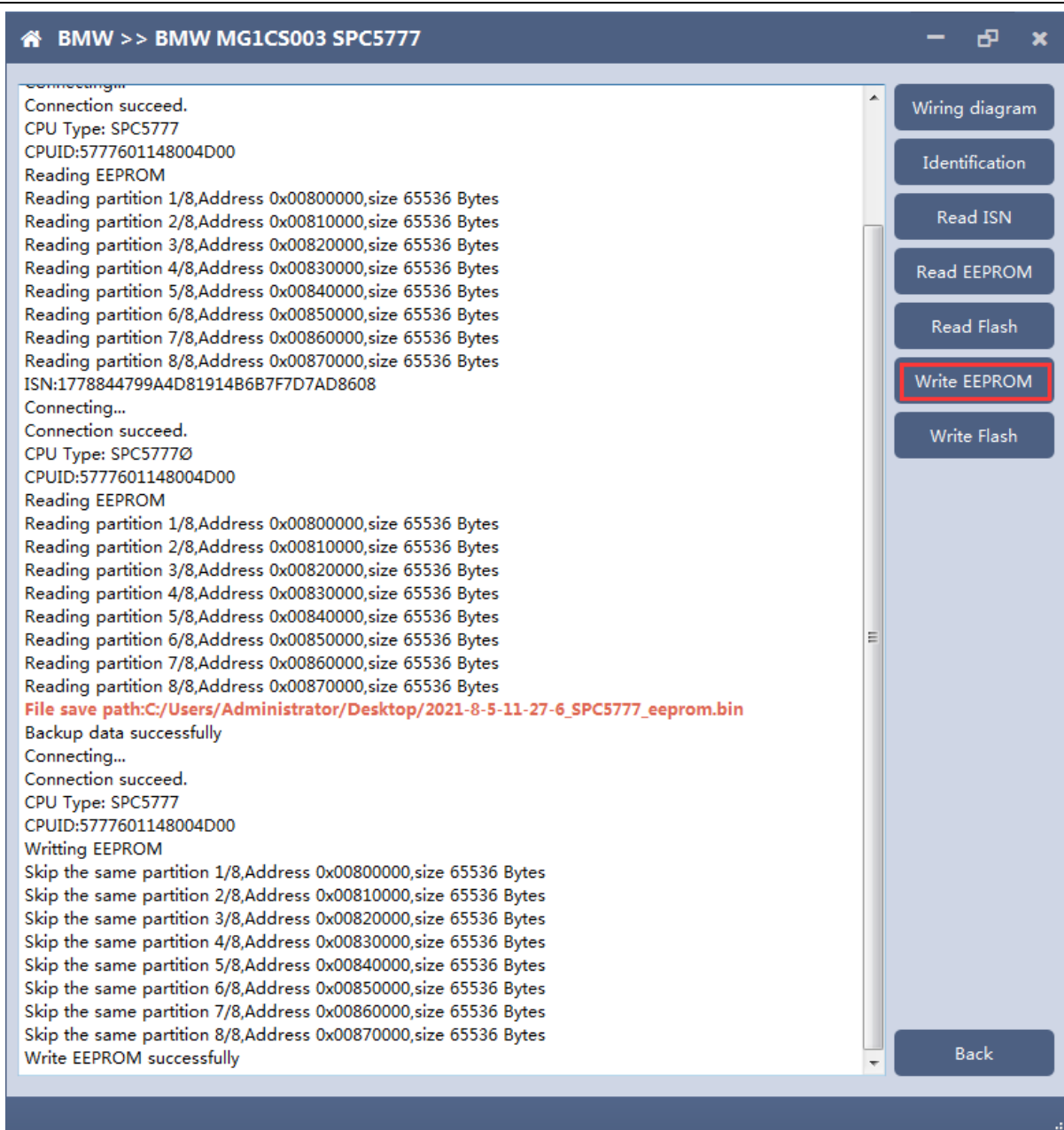
BMW >> BMW MG1CS003 SPC5777

version:0004  
Connecting...  
Connection succeed.  
CPU Type: SPC5777  
CPUID:5777601148004D00  
Connecting...  
Connection succeed.  
CPU Type: SPC5777  
CPUID:5777601148004D00  
Reading EEPROM  
Reading partition 1/8,Address 0x00800000,size 65536 Bytes  
Reading partition 2/8,Address 0x00810000,size 65536 Bytes  
Reading partition 3/8,Address 0x00820000,size 65536 Bytes  
Reading partition 4/8,Address 0x00830000,size 65536 Bytes  
Reading partition 5/8,Address 0x00840000,size 65536 Bytes  
Reading partition 6/8,Address 0x00850000,size 65536 Bytes  
Reading partition 7/8,Address 0x00860000,size 65536 Bytes  
Reading partition 8/8,Address 0x00870000,size 65536 Bytes  
ISN:1778844799A4D  
Connecting...  
Connection succeed.  
CPU Type: SPC5777  
CPUID:5777601148004D00  
Reading EEPROM  
Reading partition 1/8,Address 0x00800000,size 65536 Bytes  
Reading partition 2/8,Address 0x00810000,size 65536 Bytes  
Reading partition 3/8,Address 0x00820000,size 65536 Bytes  
Reading partition 4/8,Address 0x00830000,size 65536 Bytes  
Reading partition 5/8,Address 0x00840000,size 65536 Bytes  
Reading partition 6/8,Address 0x00850000,size 65536 Bytes  
Reading partition 7/8,Address 0x00860000,size 65536 Bytes  
Reading partition 8/8,Address 0x00870000,size 65536 Bytes  
**File save path:C:/Users/Administrator/Desktop/2021-8-5-11-27-6\_SPC5777\_eeprom.bin**  
Backup data successfully

Wiring diagram  
Identification  
Read ISN  
Read EEPROM  
Read Flash  
Write EEPROM  
Write Flash

confirm  
Data is about to be written. This operation will overwrite the original data of the ECU. Please ensure that the data is backed up. Whether to continue?  
Yes No

Back

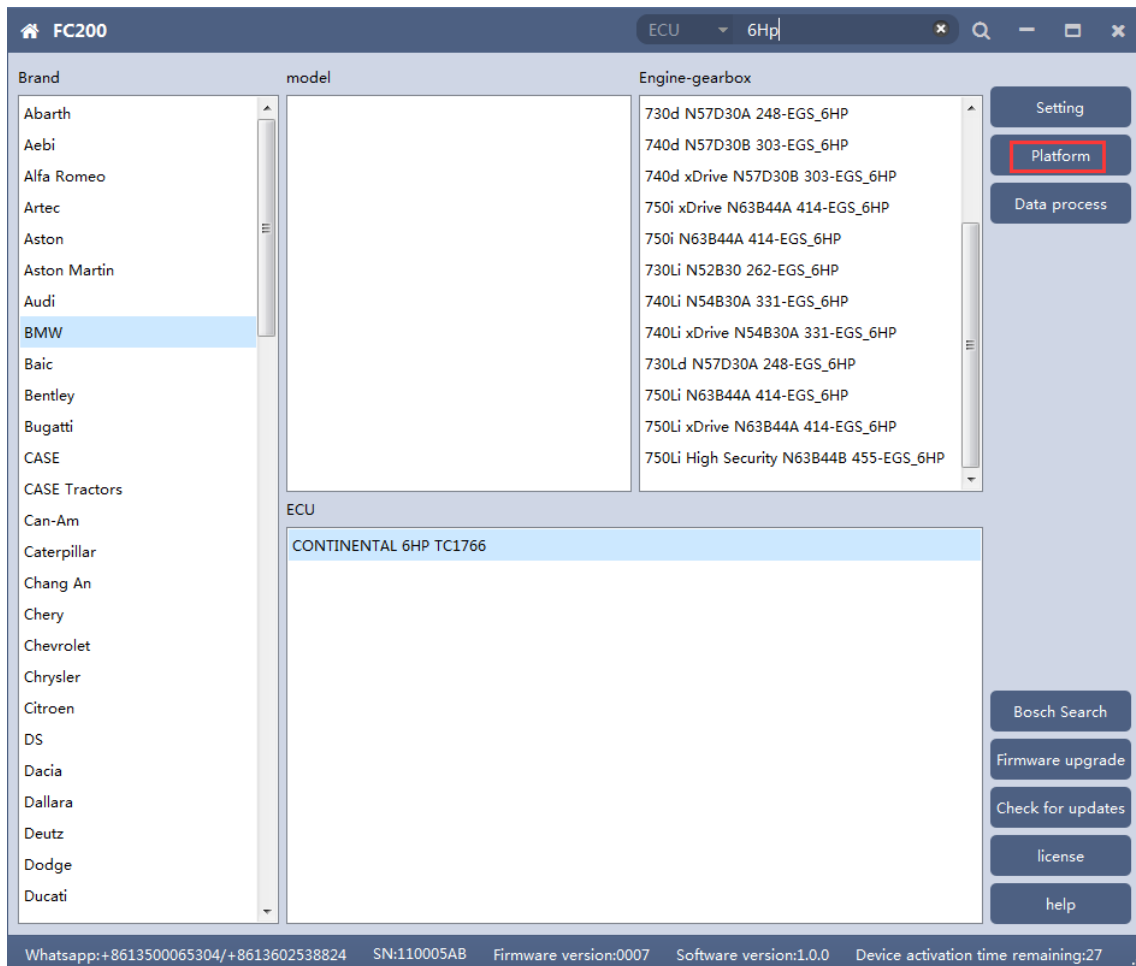


Note: During the data recovery process, it is strictly forbidden to disconnect the power supply or disconnect the device, otherwise it may cause ECU damage; if the software is shut down unexpectedly or the computer is shut down or crashed unexpectedly during the data recovery process, please do not disconnect the power supply or device Connect for 15 minutes, and the device can complete data recovery independently.

## 5. 6HP

The FC200 currently supports the cloning of 6HP ECUs in BMW F-series (F01, F02, F03).

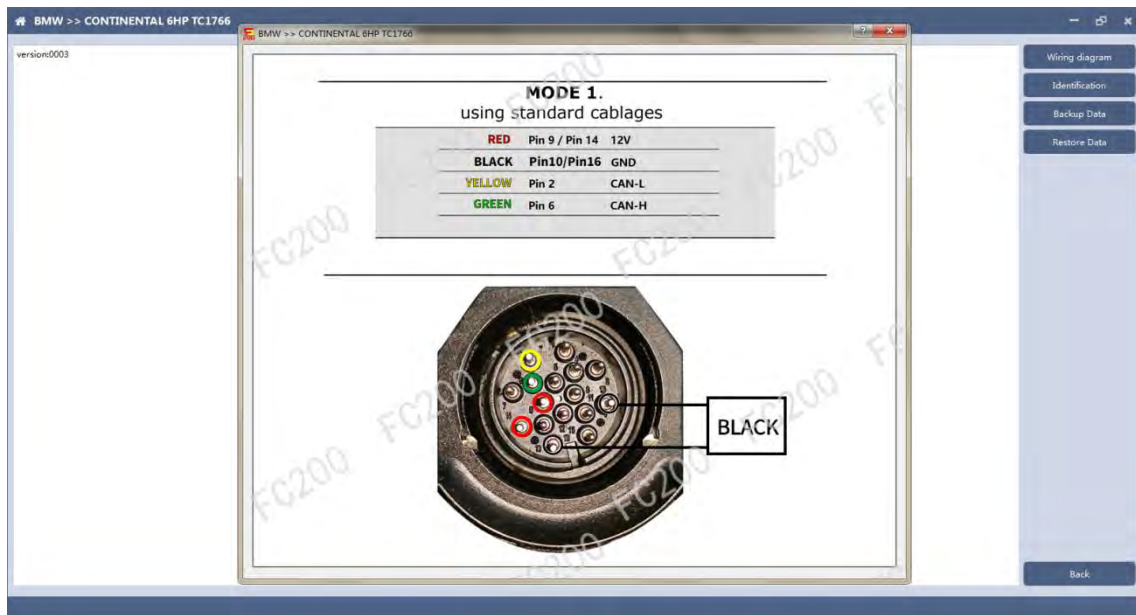
**5.1 Determine the ECU type according to the vehicle model, and select the correct model, otherwise it will not operate normally.**



After selecting the correct ECU model, the "Platform" button will appear on the right. As shown in the figure above, click the "Platform" button to enter the ECU operation interface.

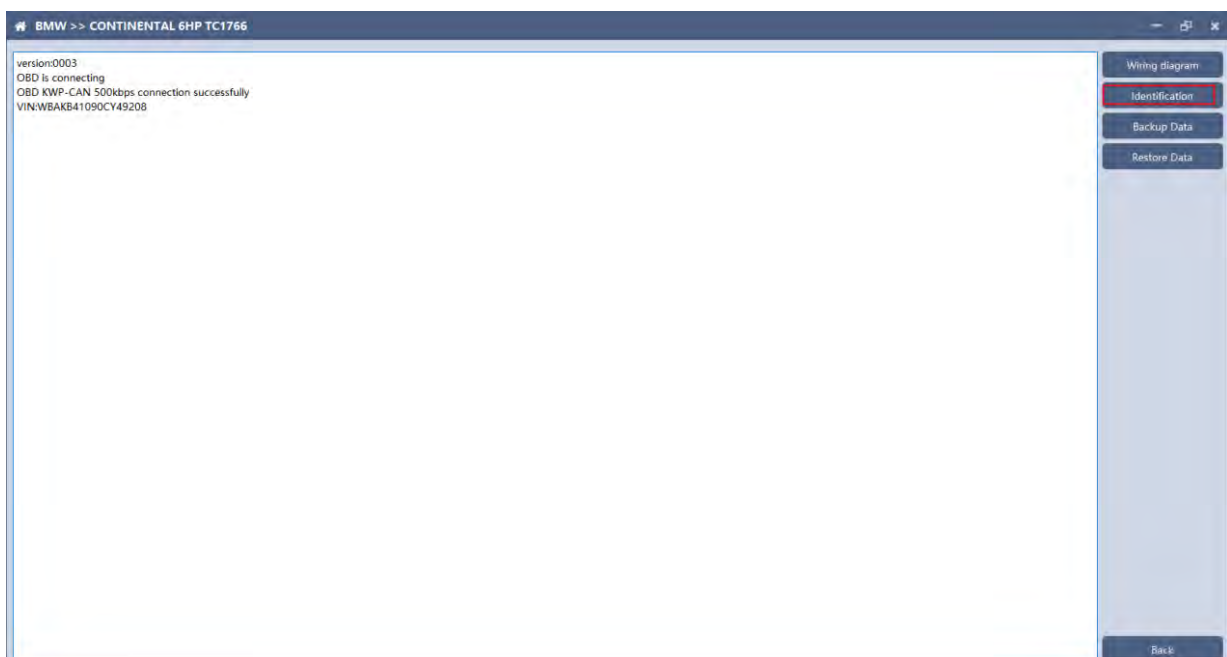


## 5.2 View wiring diagram



Click the "Wiring Diagram" button to view the ECU wiring diagram, connect the wiring harness correctly according to the wiring diagram, and connect with the device, plug in the device DC12V interface with 12V power supply.

## 5.3 Identifying ECU



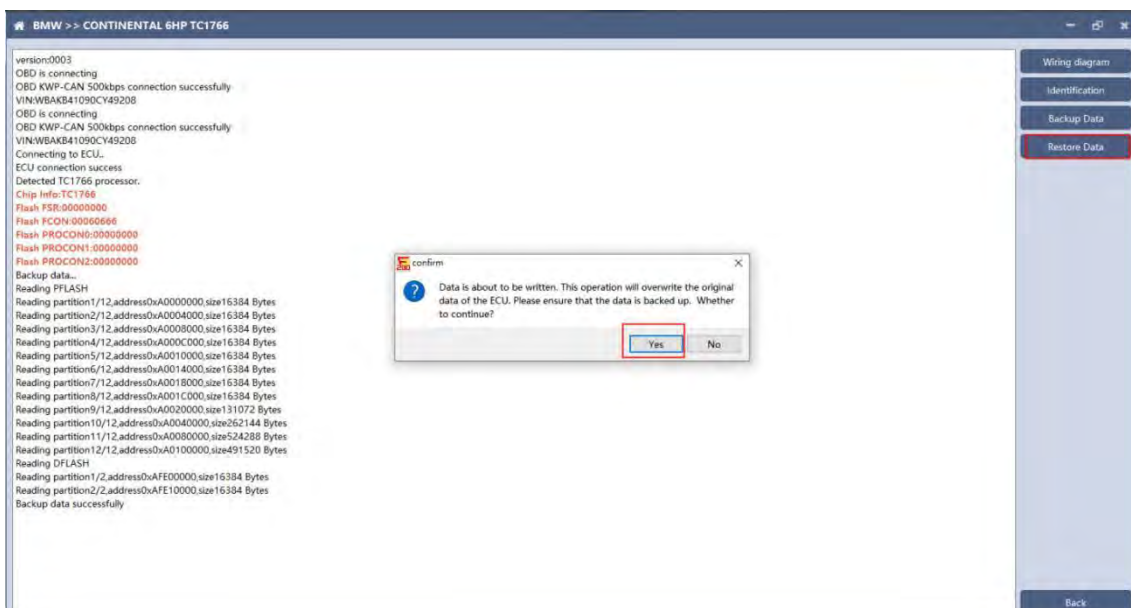
Click the "Identification" button to read the ECU related information, as shown above

## 5.4 Backup Data

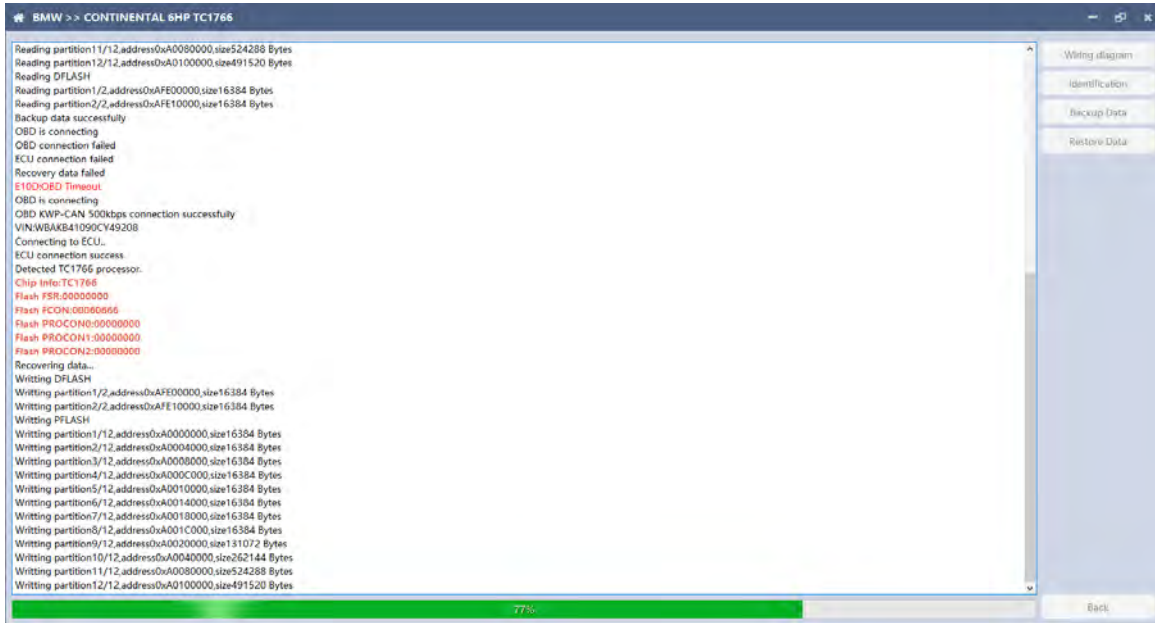


Click "Backup Data" to back up the ECU data. After reading, please save the data for subsequent use.

## 5.5 Data Restore



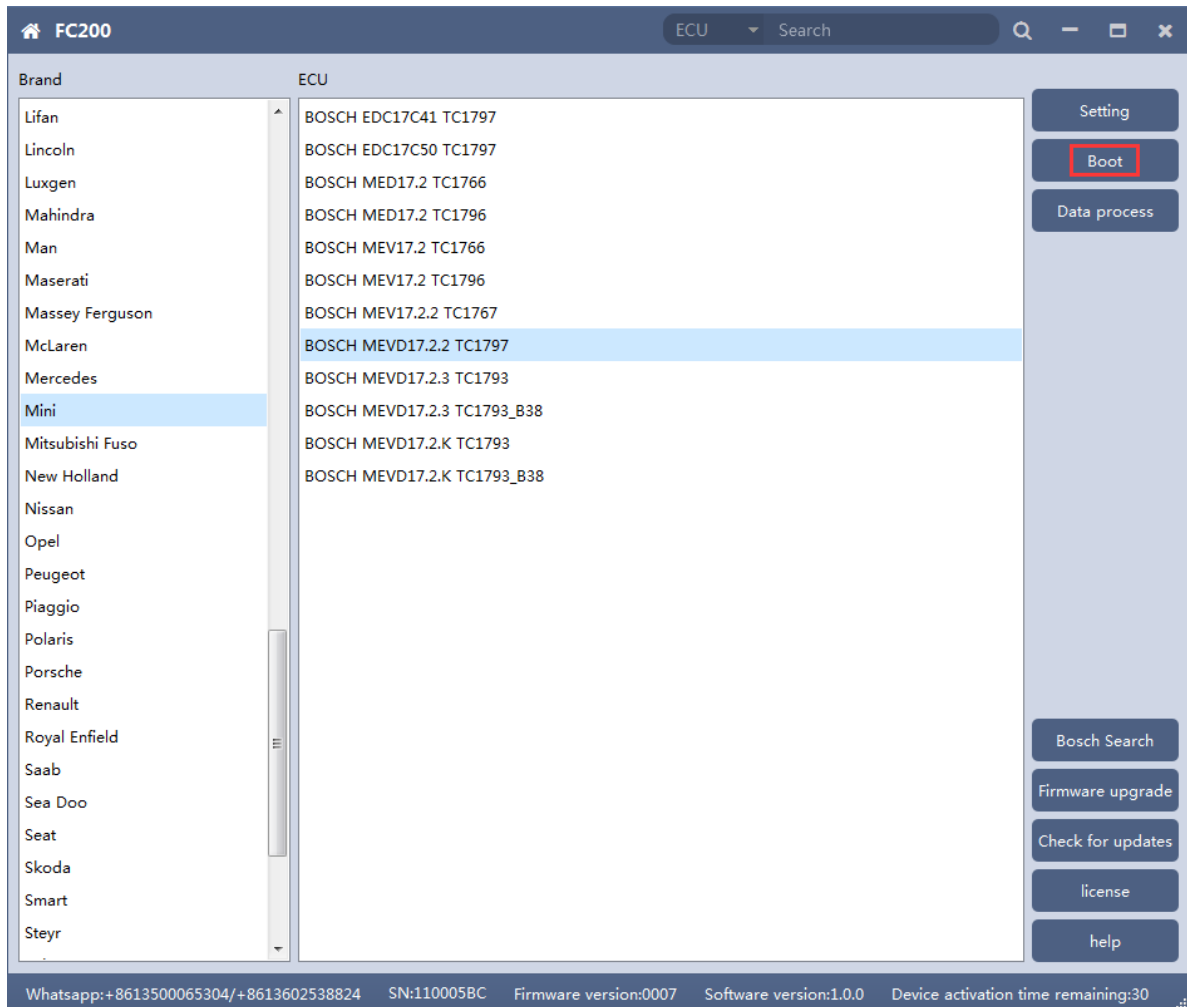
Click "Restore Data" to write the ECU data. Please make sure the data is backed up before writing. The restored data will overwrite the current ECU data. The data can be the data of the current ECU or other ECUs of the same type.



Note: During the data restore process, it is strictly forbidden to disconnect the device from the power or disconnect the device; if the software is unexpectedly shut down or the computer is shut down or crashed unexpectedly during the data recovery process, please do not disconnect the device power or the device connection for 15 minutes , The device can complete the data restore independently.

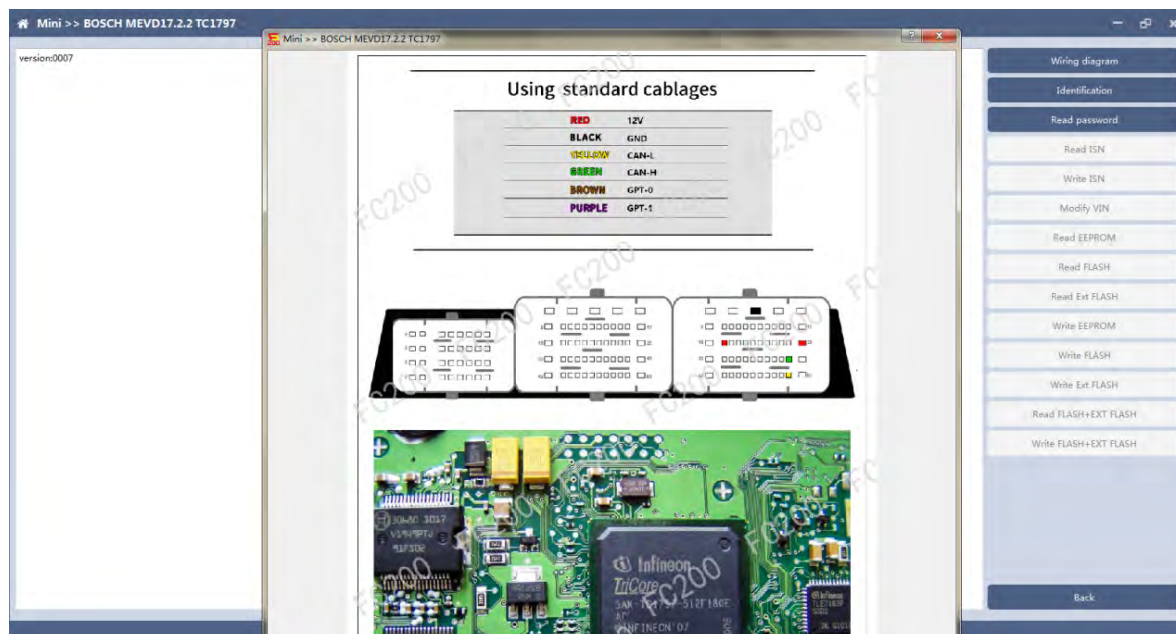
## 6. BOSCH BOOT (Boot) read and write data

6.1 The ECU type should be determined according to car type, and the model should be selected correctly, otherwise it can not operate normally.

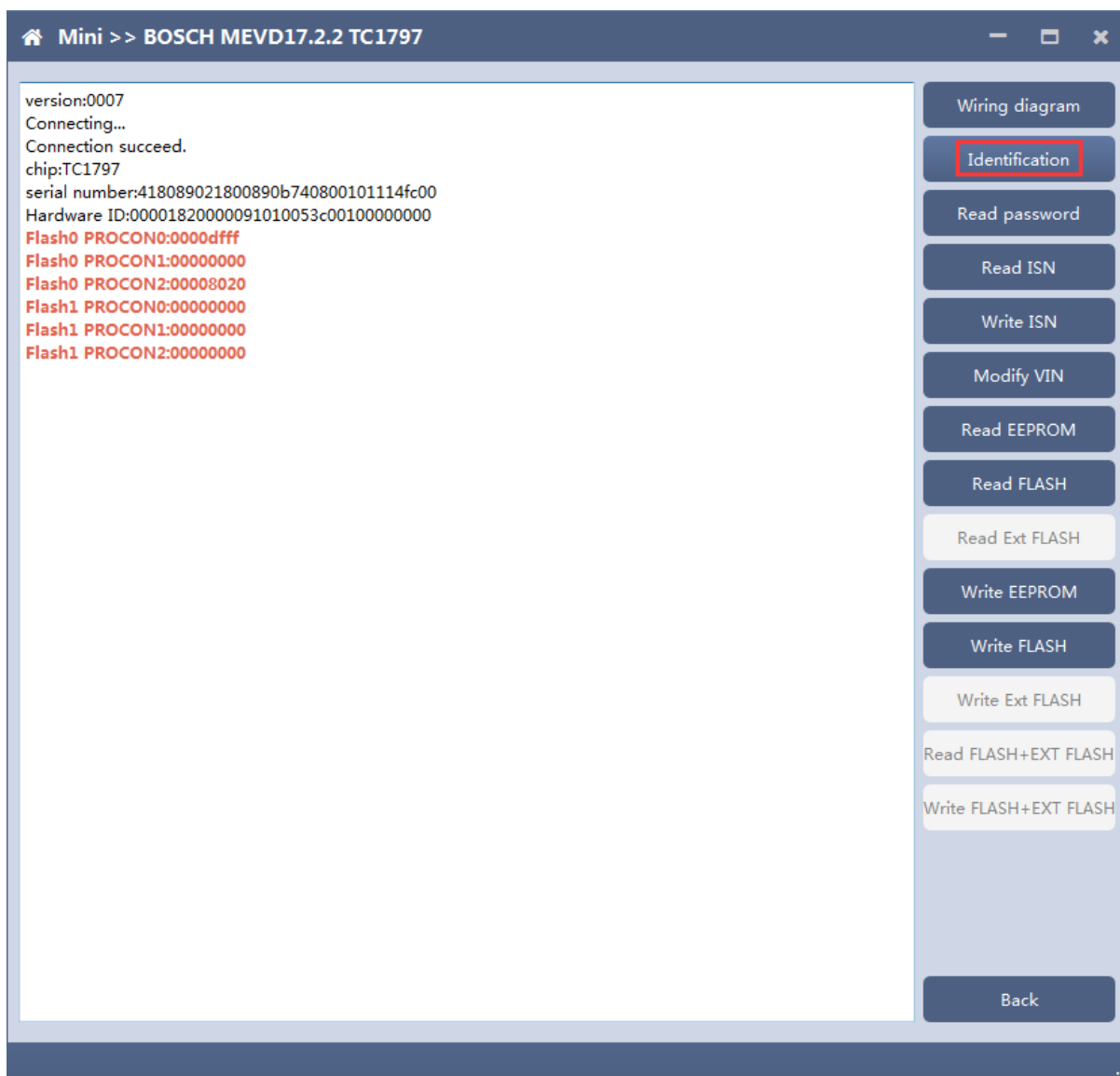


After choosing correct ecu type, there will show a "Boot" button as shown picture above.

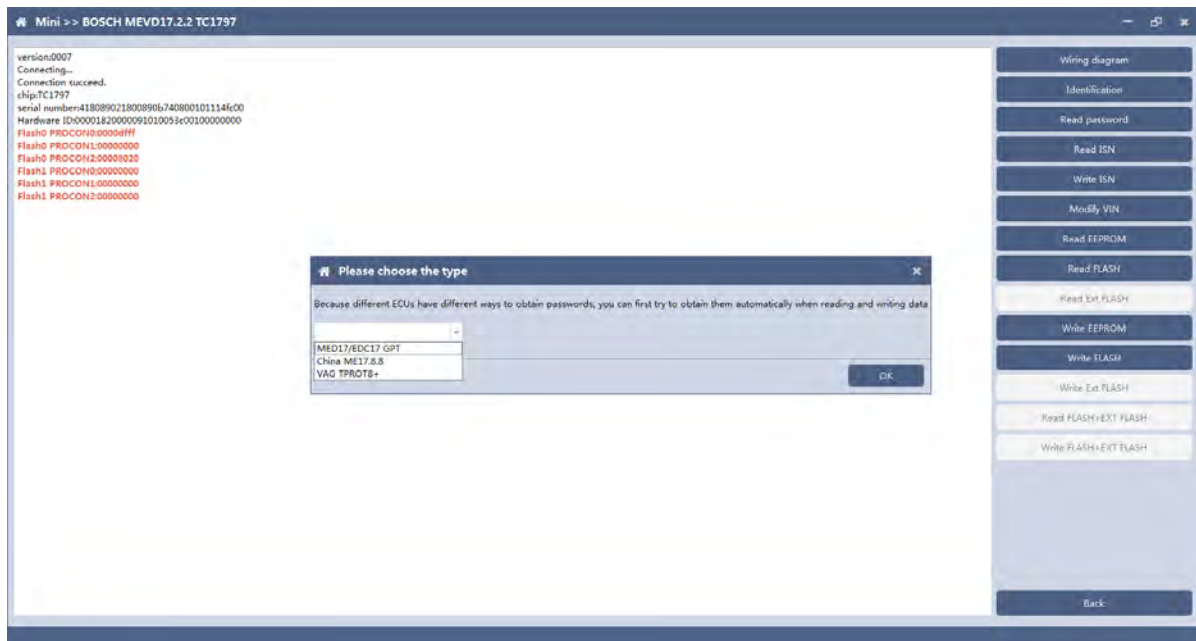
## 6.2 Check the diagram in software



## 6.3 Identify ECU

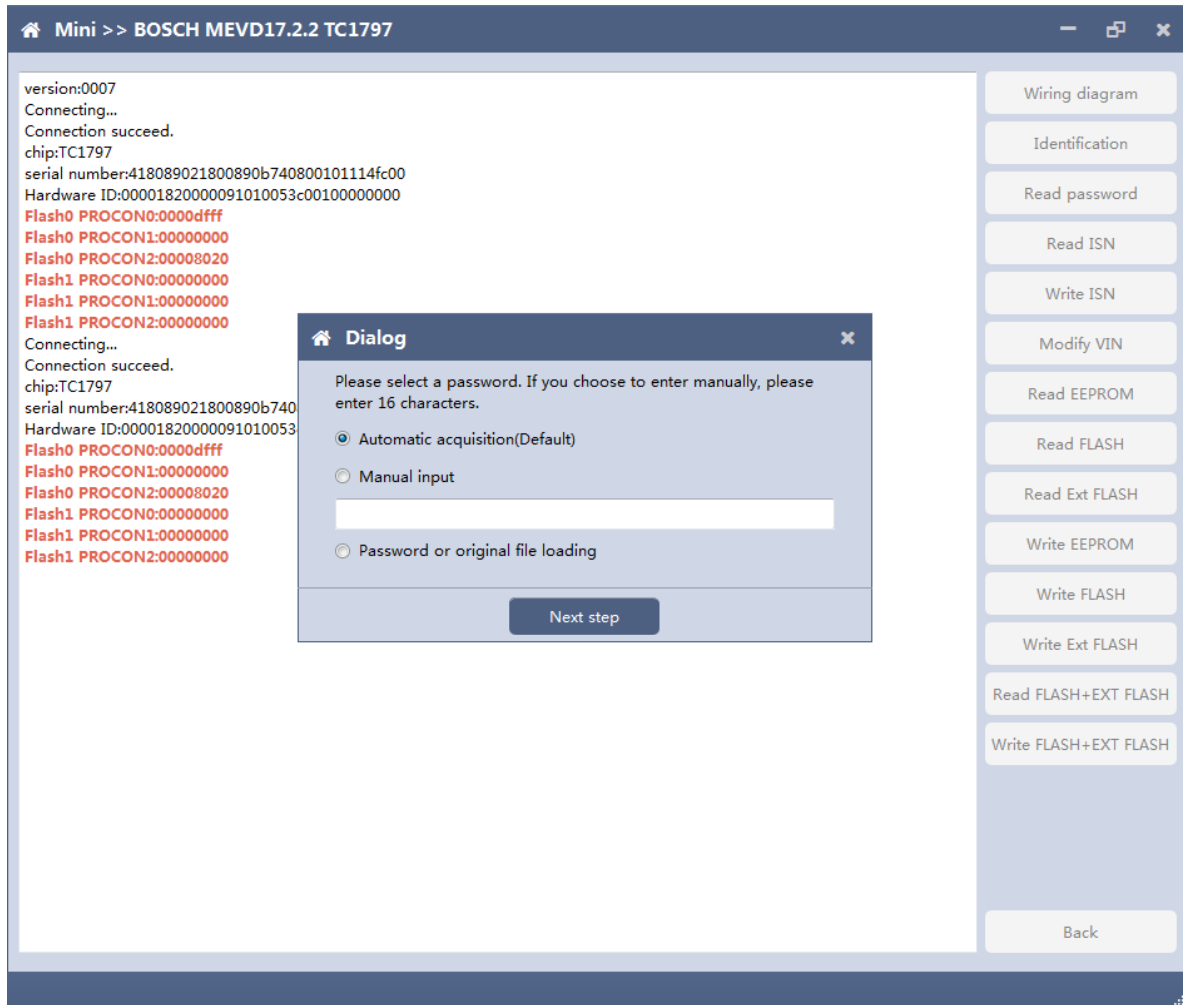


## 6.4 Read password



Pop up option box when reading password and select correct type.

## 6.5 Read/write Pflash



When reading and writing flash, please select automatic acquisition first. If it is not successful, please try other input methods.

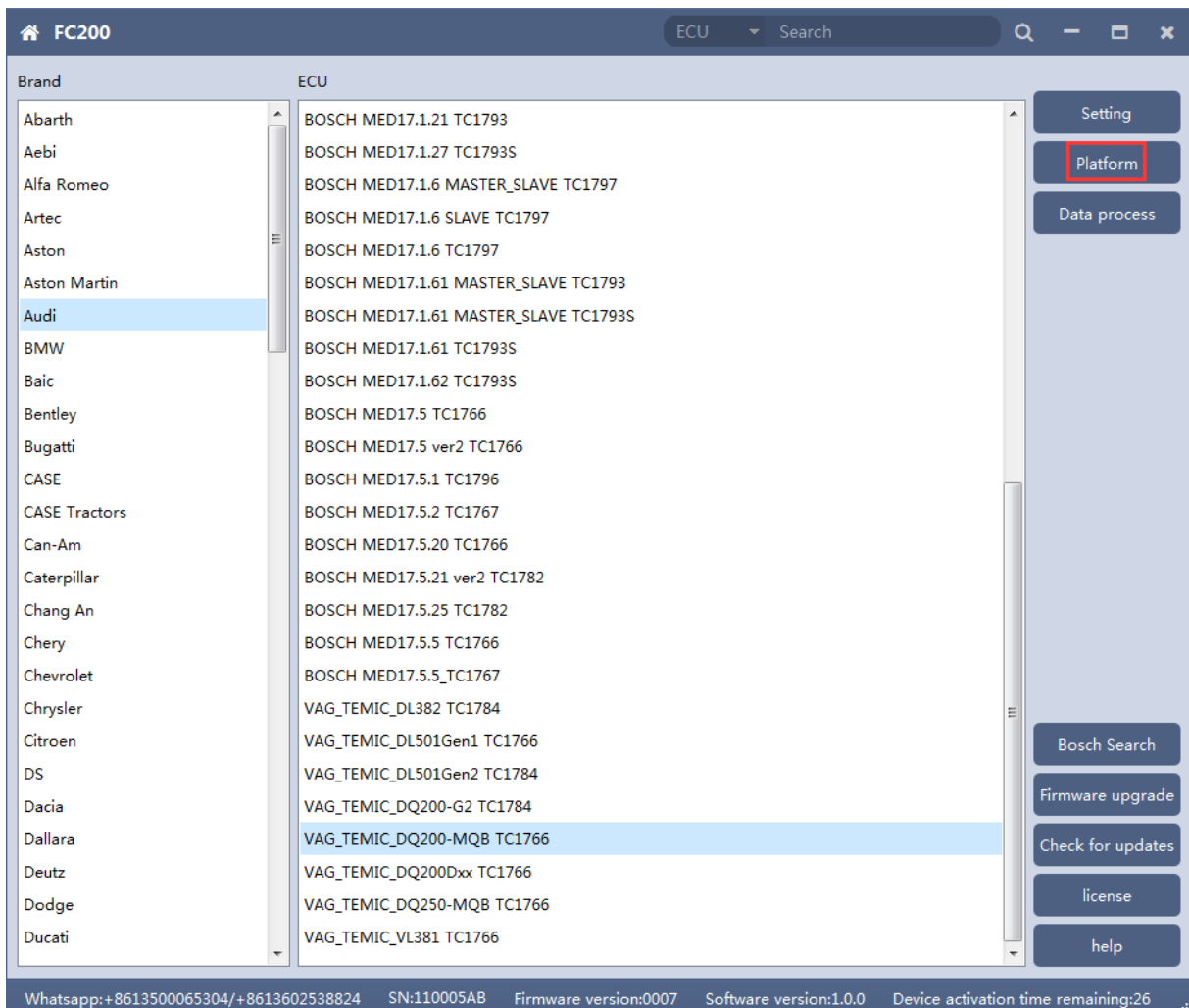
Please note : In the process of writing data, it is strictly forbidden to disconnect the power supply or the connection of the device; if the software is shut down or the computer is shut down or crashes unexpectedly in the process of writing data, please do not disconnect the power supply or the connection of the device, and keep it for 15 minutes, the device can complete the data recovery independently.



## 7. Volkswagen EGS read and write Flash on bench

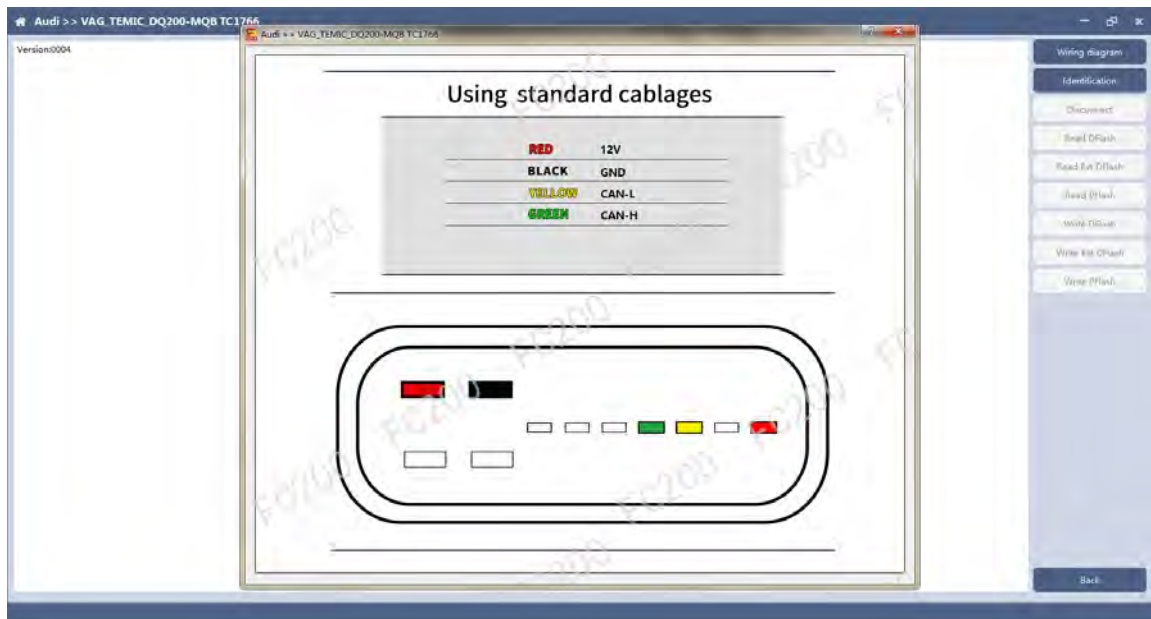
AT-200 currently supports data reading and writing functions of DQ200 and VL381 transmissions of Audi and Volkswagen. DQ200 is taken as an example following.

**7.1 The ECU type should be determined according to car type and the model should be selected correctly, otherwise it can not operate normally.**

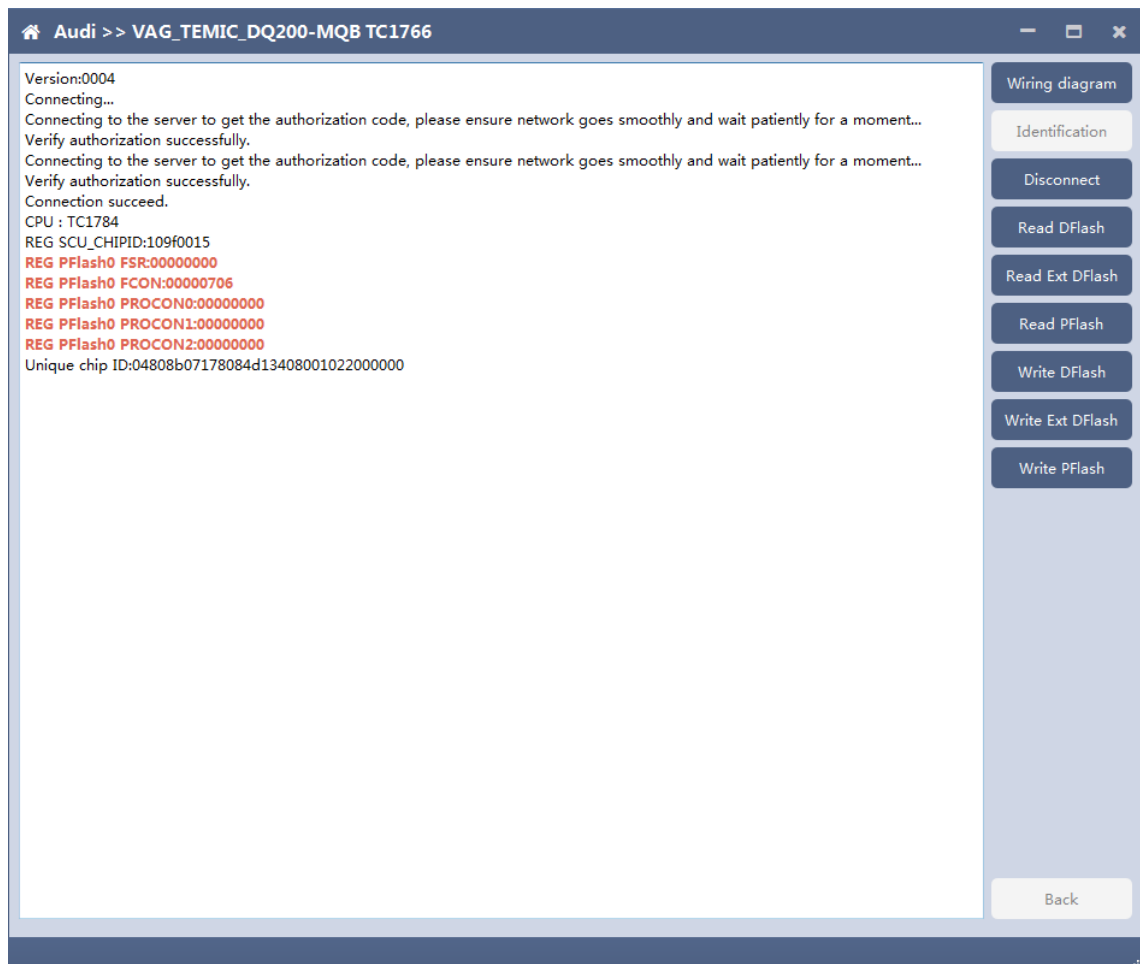


## 7.2 Check diagram

Connect cables well according software diagram



## 7.3 Identify ECU



After connecting to DQ200, the "identify" button will be grayed out. You can proceed to the next step. When you click "disconnect", you can identify again.

## 7.4 Read DFlash, EXT DFlash and PFlash

Take reading Dflash as an example:



## 7.5 Write DFlash, EXT DFlash and PFlash

Take writing EXT-DFlash as an example:

Audi >> VAG\_TEMIC\_DQ200-MQB TC1766

Version:0004  
Connecting...  
Connecting to the server to get the authorization code, please ensure network goes smoothly and wait patiently for a moment...  
Verify authorization successfully.  
Connecting to the server to get the authorization code, please ensure network goes smoothly and wait patiently for a moment...  
Verify authorization successfully.  
Connection succeed.  
CPU : TC1784  
REG SCU\_CHIPID:109f0015  
REG PFlash0 FSR:00000000  
REG PFlash0 FCN:00000706  
REG PFlash0 PROCON0:00000000  
REG PFlash0 PROCON1:00000000  
REG PFlash0 PROCON2:00000000  
Unique chip ID:04808b07178084d13408001022000000  
Reading DFLASH  
Reading partition 1/2,Address 0xA  
Reading partition 2/2,Address 0xA  
File save path:C:/Users/Administ  
Backup data successfully

confirm

Data is about to be written. This operation will overwrite the original data of the ECU. Please ensure that the data is backed up. Whether to continue?

Yes No

Wiring diagram  
Identification  
Disconnect  
Read DFlash  
Read Ext DFlash  
Read PFlash  
Write DFlash  
Write Ext DFlash  
Write PFlash

Back

Audi >> VAG\_TEMIC\_DQ200-MQB TC1766

Version:0004  
Connecting...  
Connecting to the server to get the authorization code, please ensure network goes smoothly and wait patiently for a moment...  
Verify authorization successfully.  
Connecting to the server to get the authorization code, please ensure network goes smoothly and wait patiently for a moment...  
Verify authorization successfully.  
Connection succeed.  
CPU : TC1784  
REG SCU\_CHIPID:109f0015  
REG PFlash0 FSR:00000000  
REG PFlash0 FCN:00000706  
REG PFlash0 PROCON0:00000000  
REG PFlash0 PROCON1:00000000  
REG PFlash0 PROCON2:00000000  
Unique chip ID:04808b07178084d13408001022000000  
Writing EXT\_DFLASH  
Verifying external DFlash  
Verification successfully  
Write EXT\_DFLASH successfully

Wiring diagram  
Identification  
Disconnect  
Read DFlash  
Read Ext DFlash  
Read PFlash  
Write DFlash  
Write Ext DFlash  
Write PFlash

Back

---

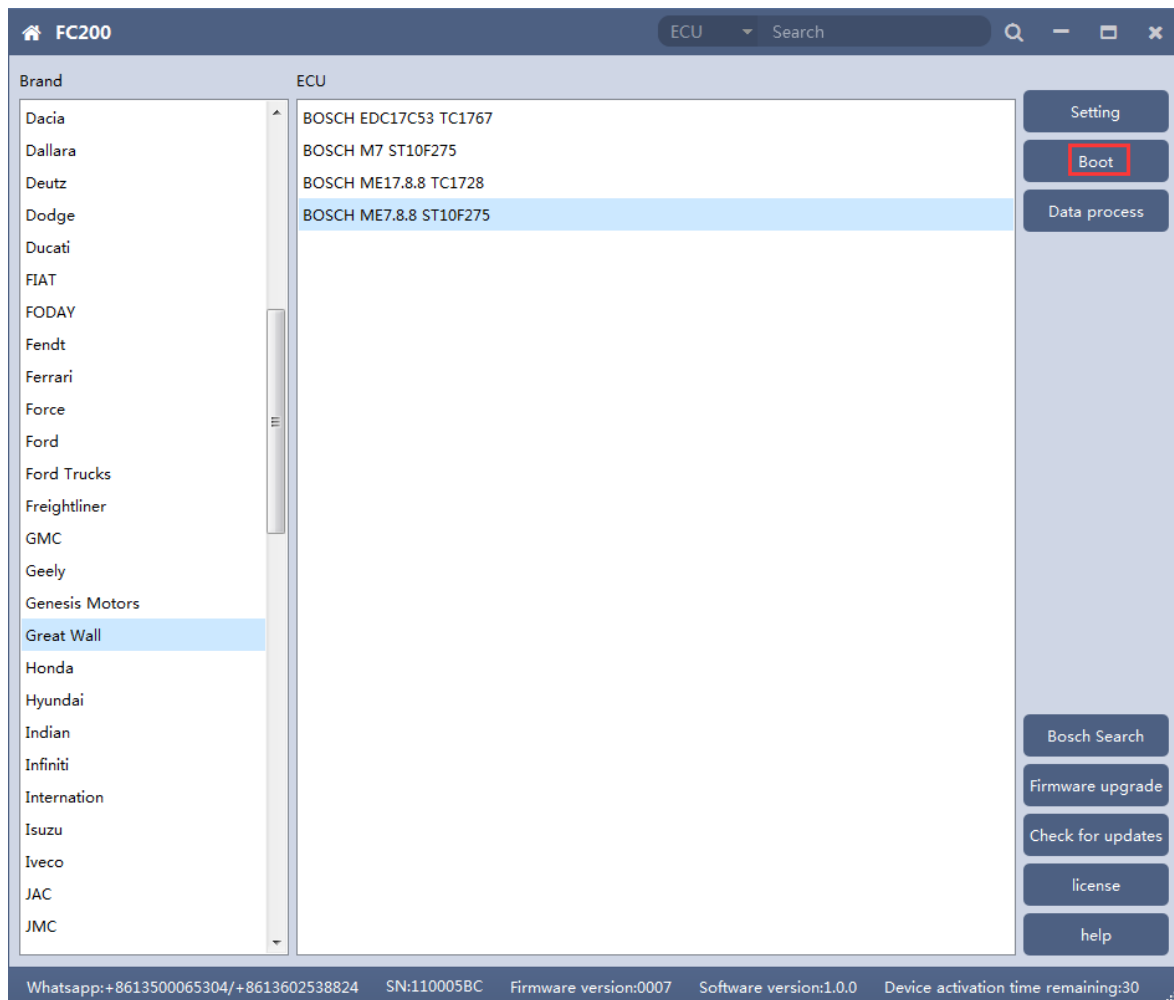
Back up original data before writing flash.

Please note : In the process of writing data, it is strictly forbidden to disconnect the power supply or the connection of the FC200; if the software is shut down or the computer is shut down or crashes unexpectedly in the process of writing data, please do not disconnect the power supply or the connection of FC200 and keep it for 15 minutes, FC200 can complete the data recovery independently.

## **8. BOSCH ST10 series (Boot) read and write data**

FC200 currently supports ME7.8.8 ECU data reading and writing function.

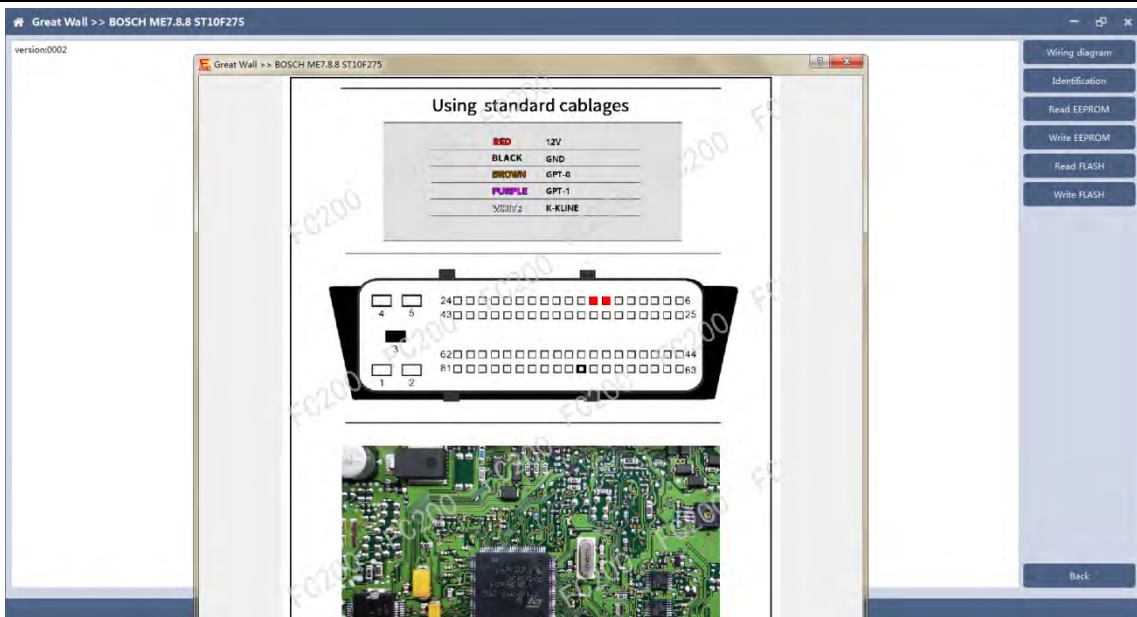
**8.1 The ECU type should be determined according to car type, and the model should be selected correctly, otherwise, it cannot be operated normally.**



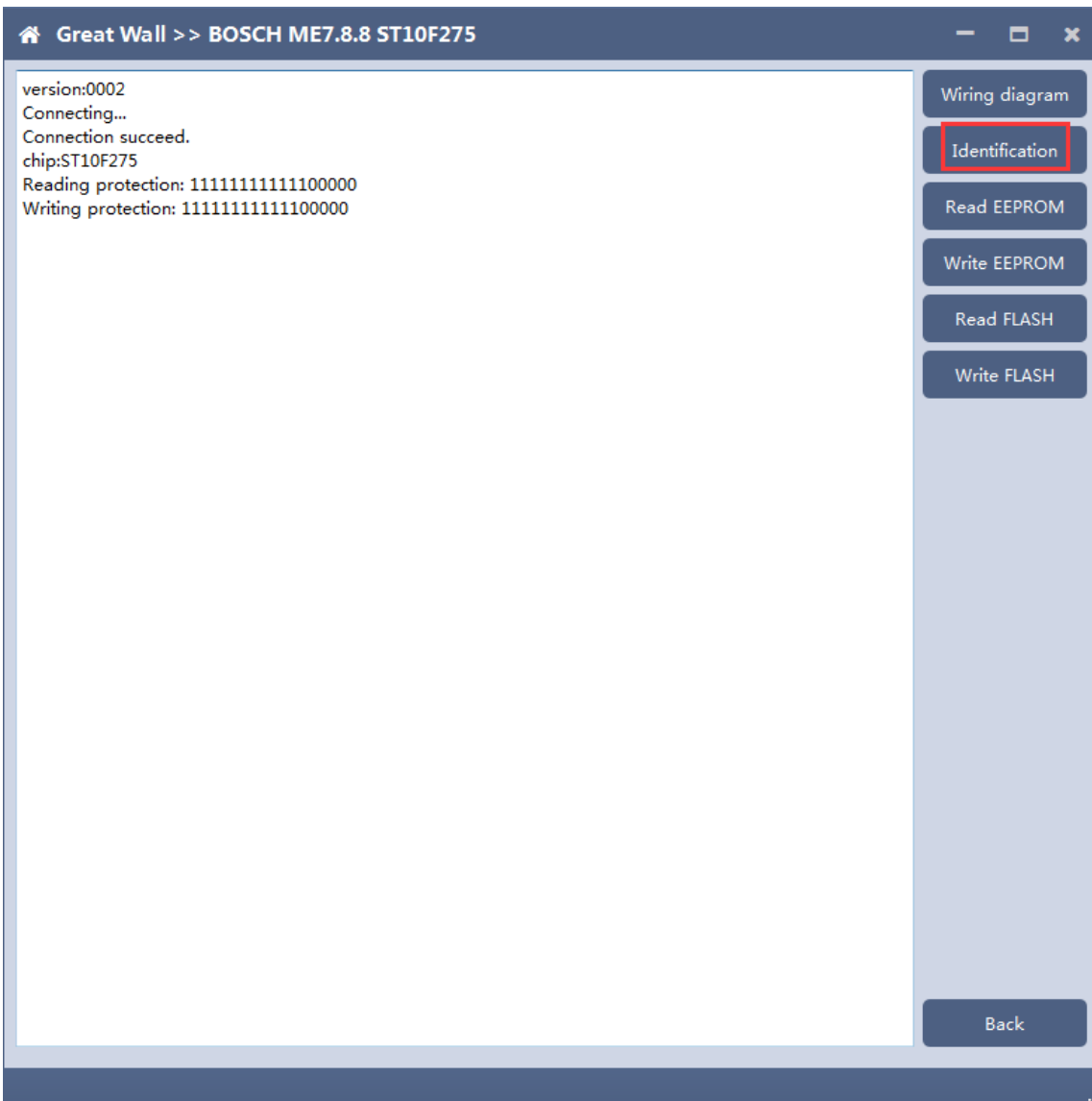
## 8.2 Check diagram

Connect the cables according to software diagram.

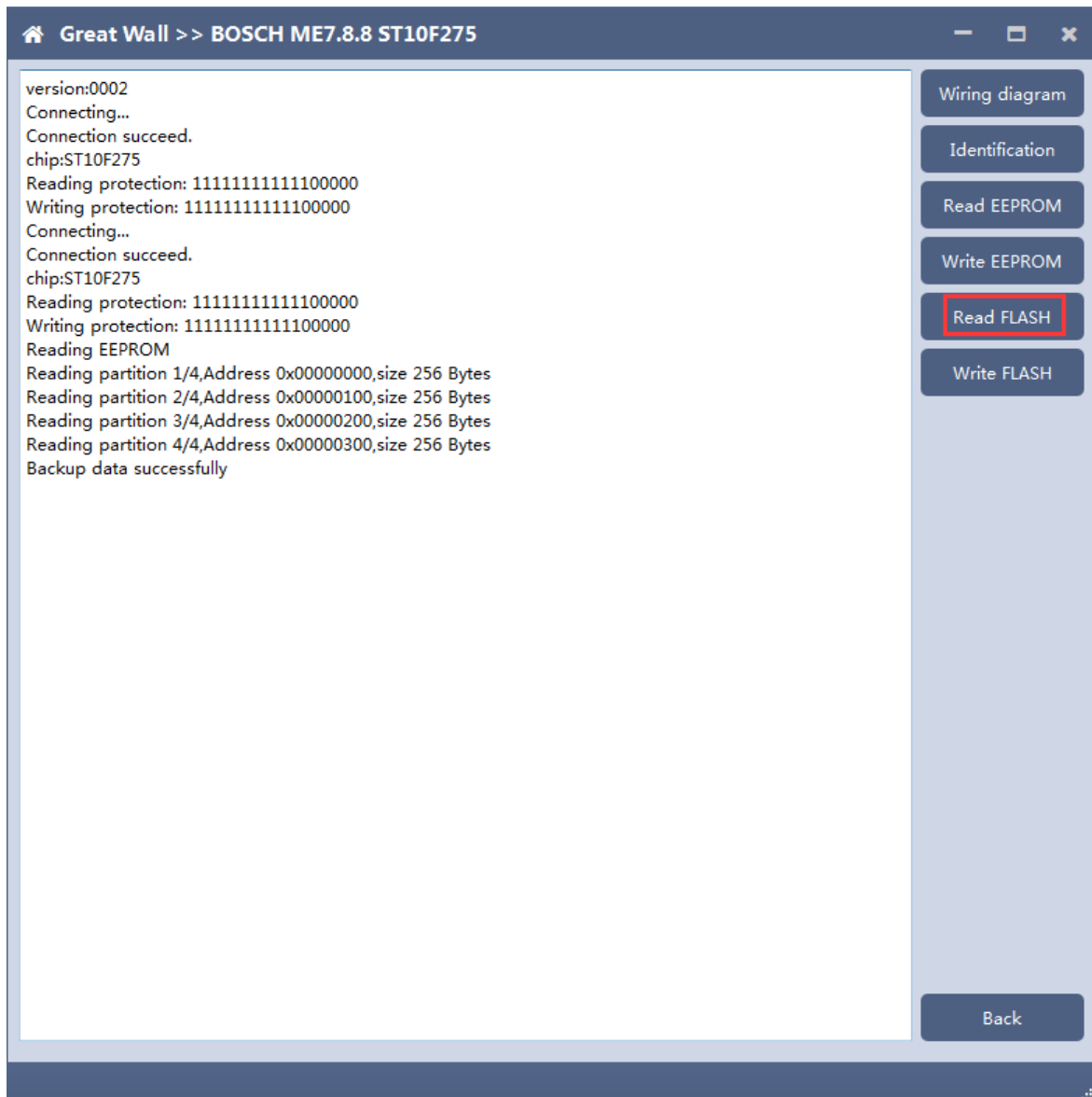
**Note: Password reading is the password reading connection, and bootloader reading is the boot mode connection.**



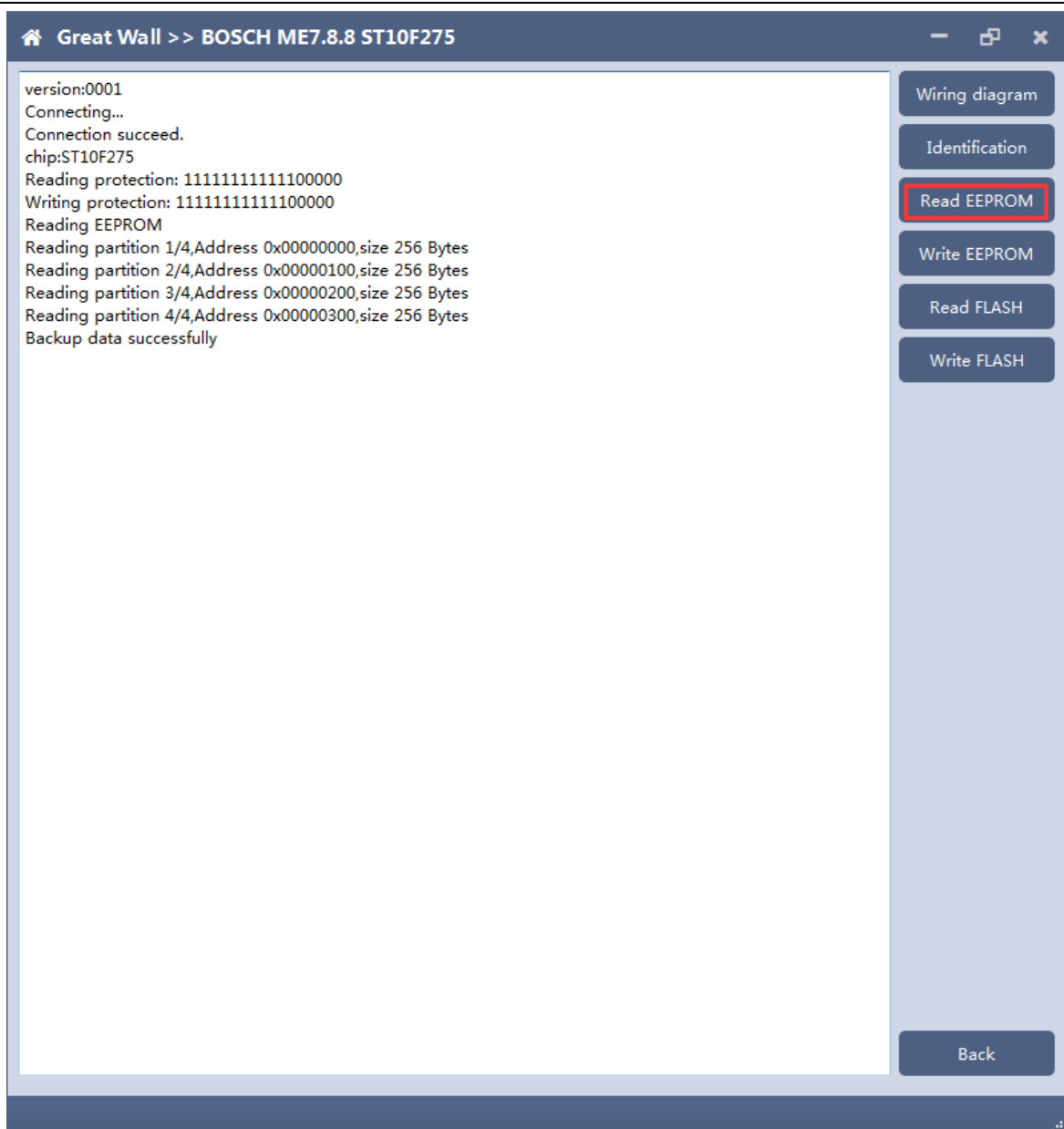
### 8.3 Identification



## 8.4 Read EEPROM and FLASH

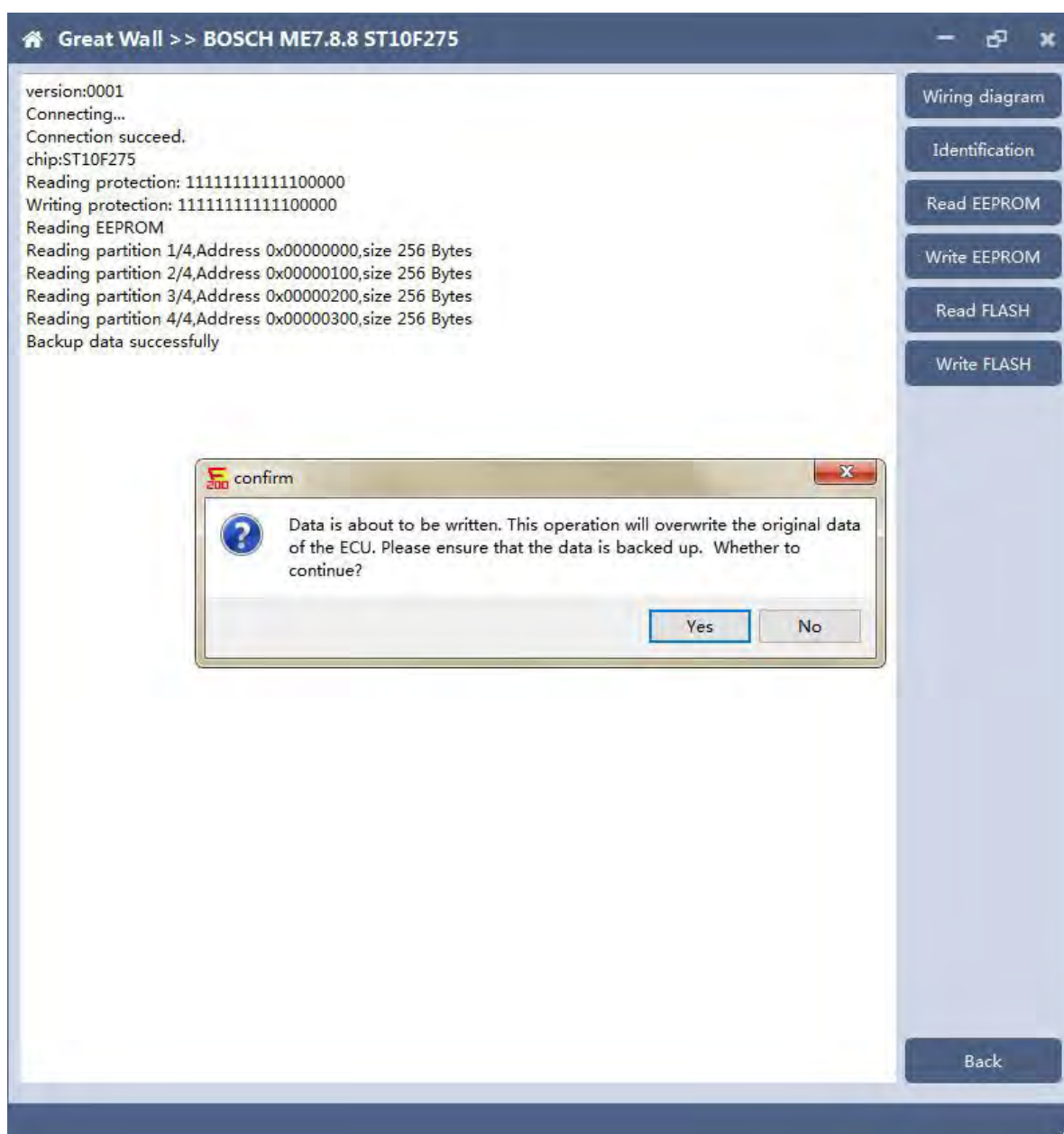






## 8.5 Write EEPROM and FLASH

Please read the backup data before writing



Note: in the process of writing data, it is strictly forbidden to disconnect the power supply or the connection of the device; if the software is shut down or the computer is shut down or crashes unexpectedly in the process of writing data, please do not disconnect the power supply or the connection of the device, and keep it for 15 minutes. The device can recover the data independently.

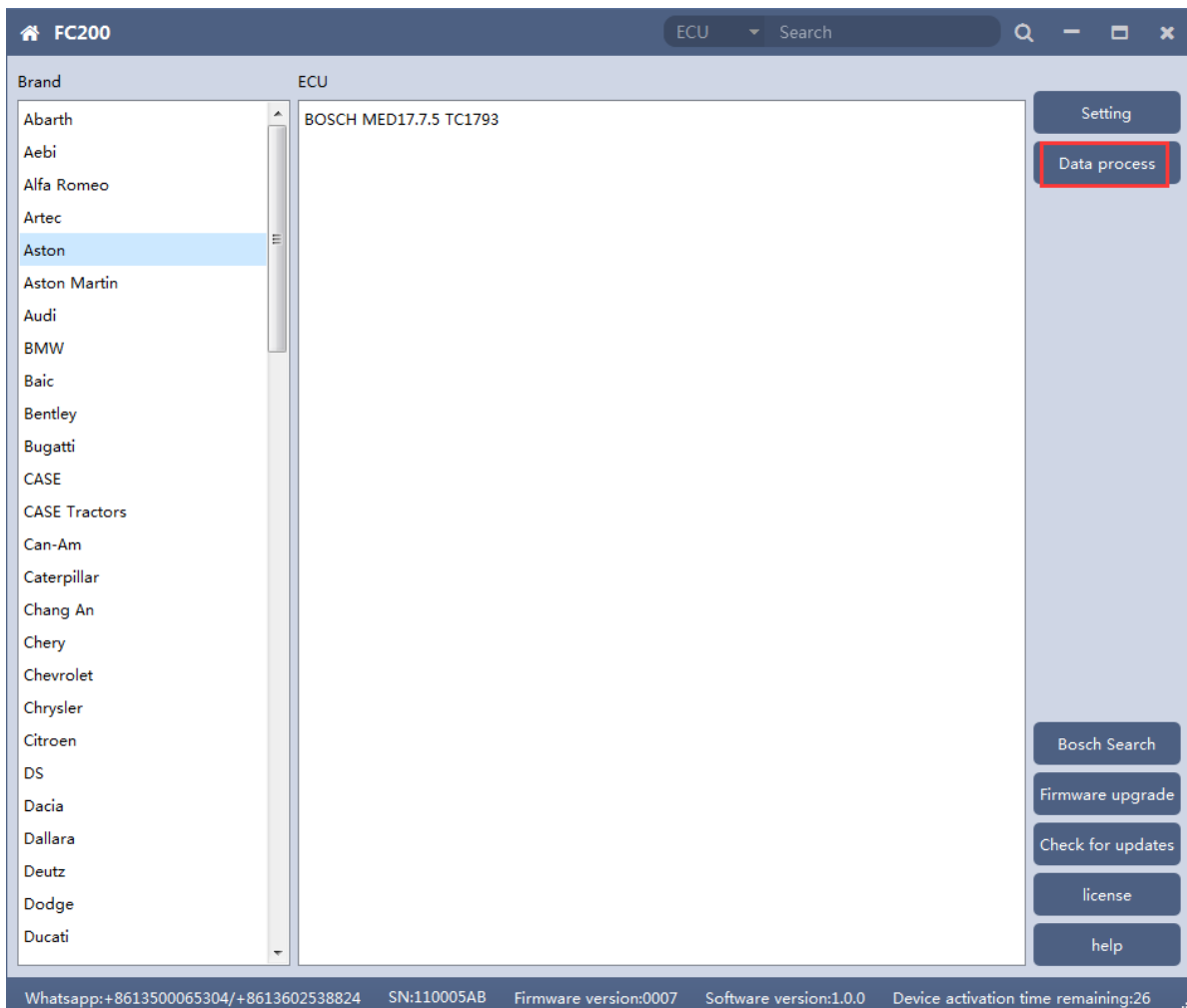
## 9. MED17/EDC17 data process tool

FC200 currently support(Generation 4 and 5 anti theft of AUDI/SEAT/SKODA/VOLKSWAGEN)ECU data parsing and modification.

Support Bosch MED/EDC17series immo off.

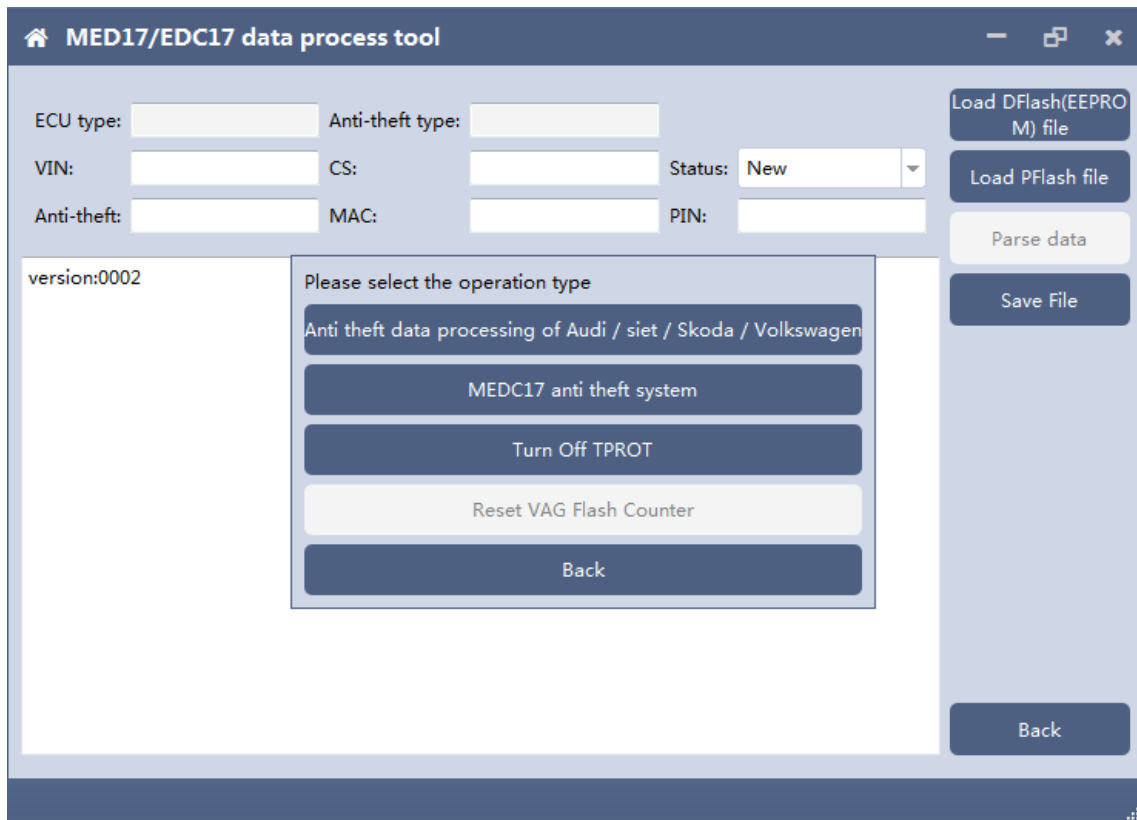
Support the closing TPROT function of Bosch VAG MEDC17 series, BMW / mini MEVD17 / EDC17 series, Hyundai / Kia EDC17 & MED (G) 17 series.

### 9.1 Choose AUDI/SEAT/SKODA/VOLKSWAGEN car type then enter data process function



## 9.2 Select operation type

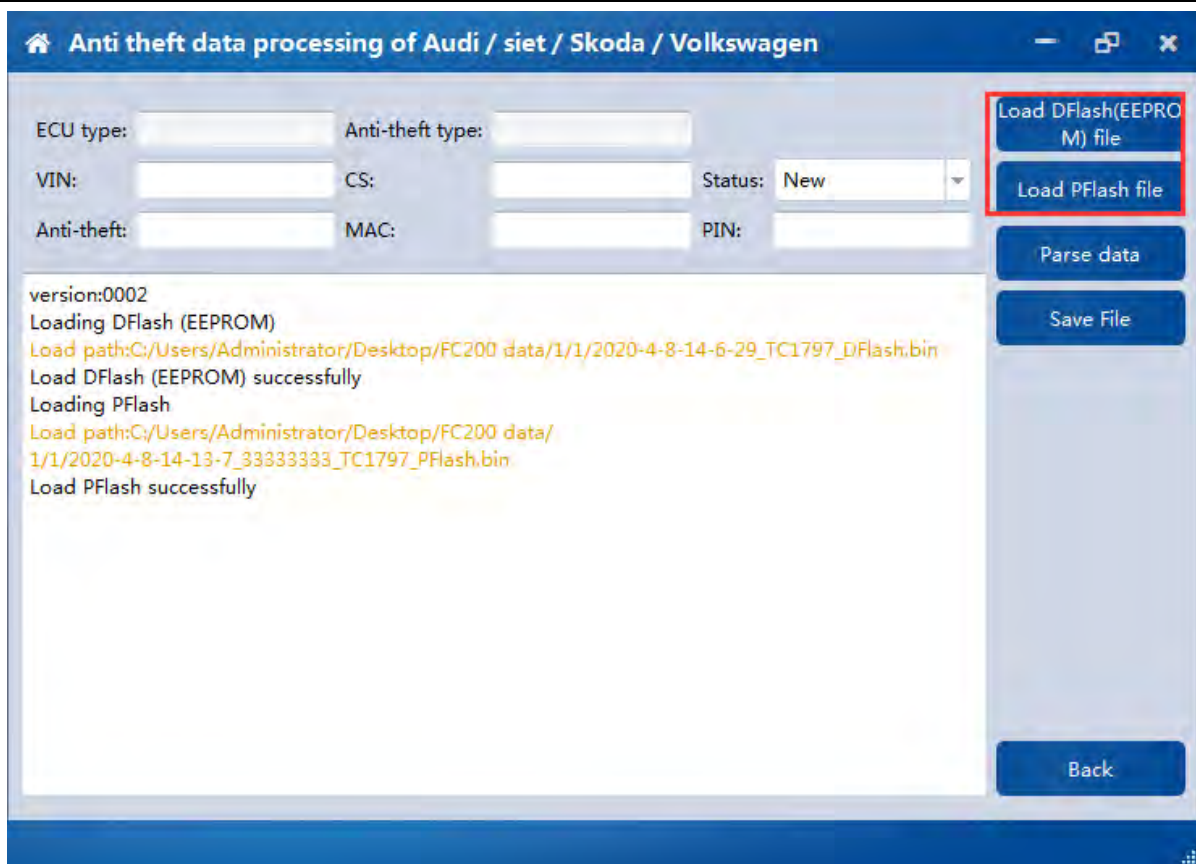
Choose function needs to be operated



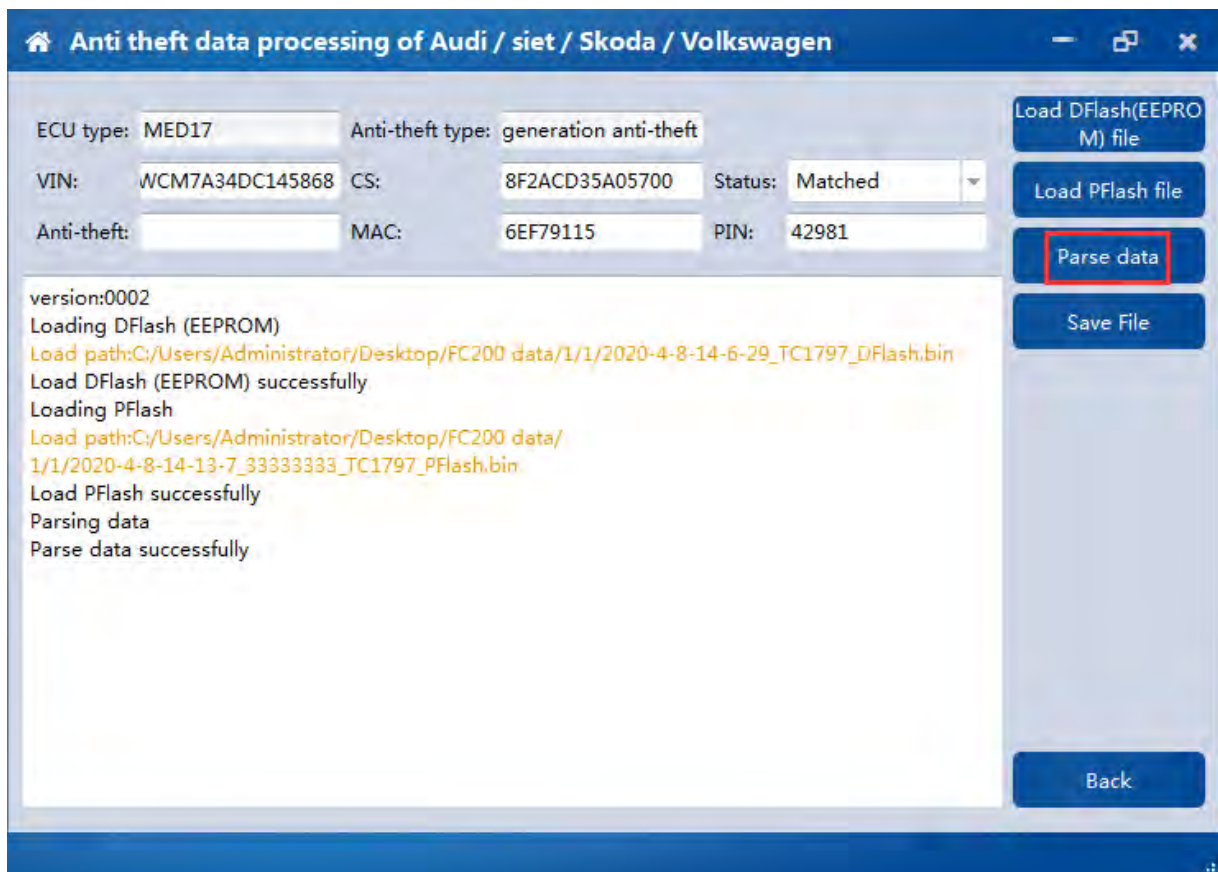
## 9.3 AUDI/SEAT/SKODA/VOLKSWAGEN anti-thief data process function

### 9.3.1 Load DFlash(EEPROM) and PFlash files

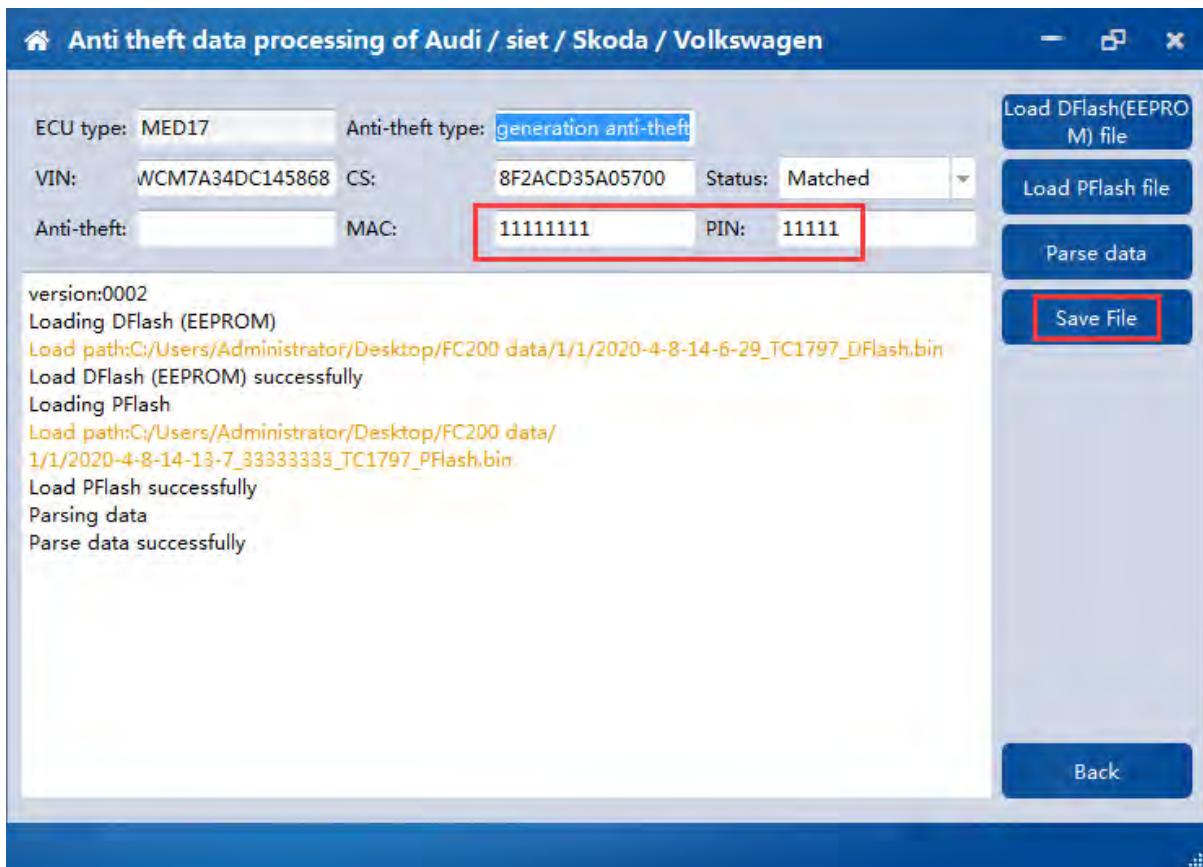
Load DFlash (EEPROM) and PFlash files respectively



### 9.3.2 Parsing data

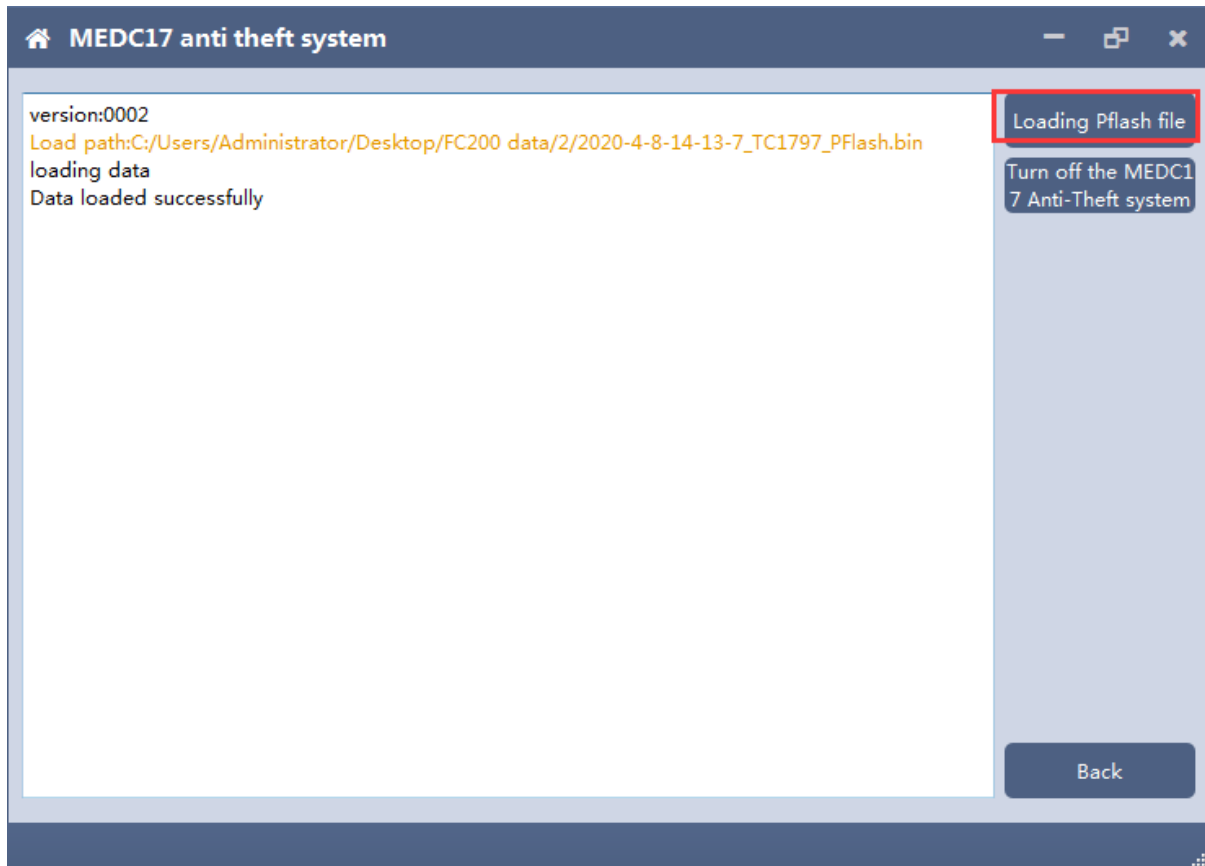


### 9.3.3 Modify the data and save the file

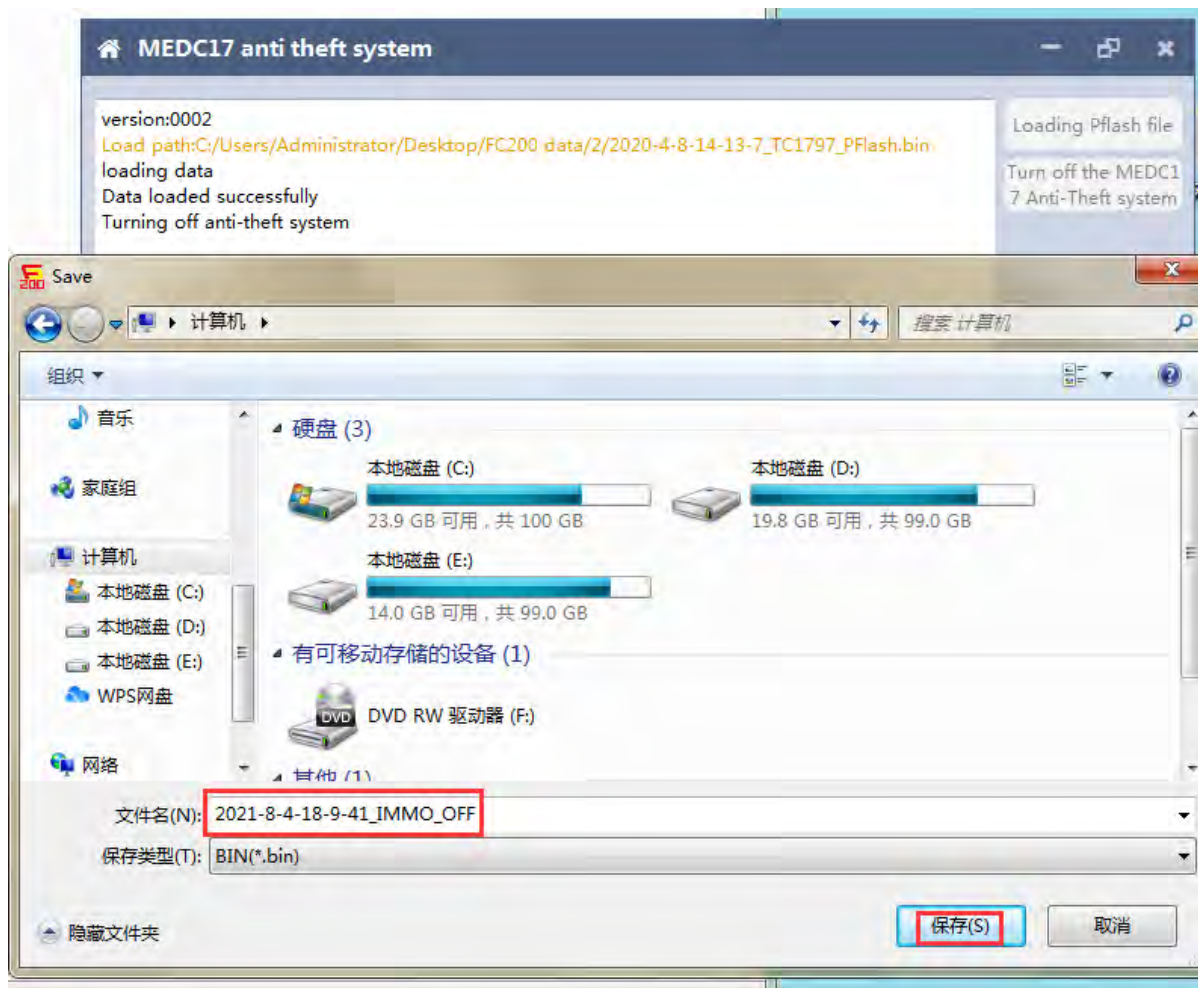


## 9.4 MEDC17 anti-theft system function

### 9.4.1 Load PFLASH data



## 9.4.2 Turn off the MEDC17 anti-theft system and save file

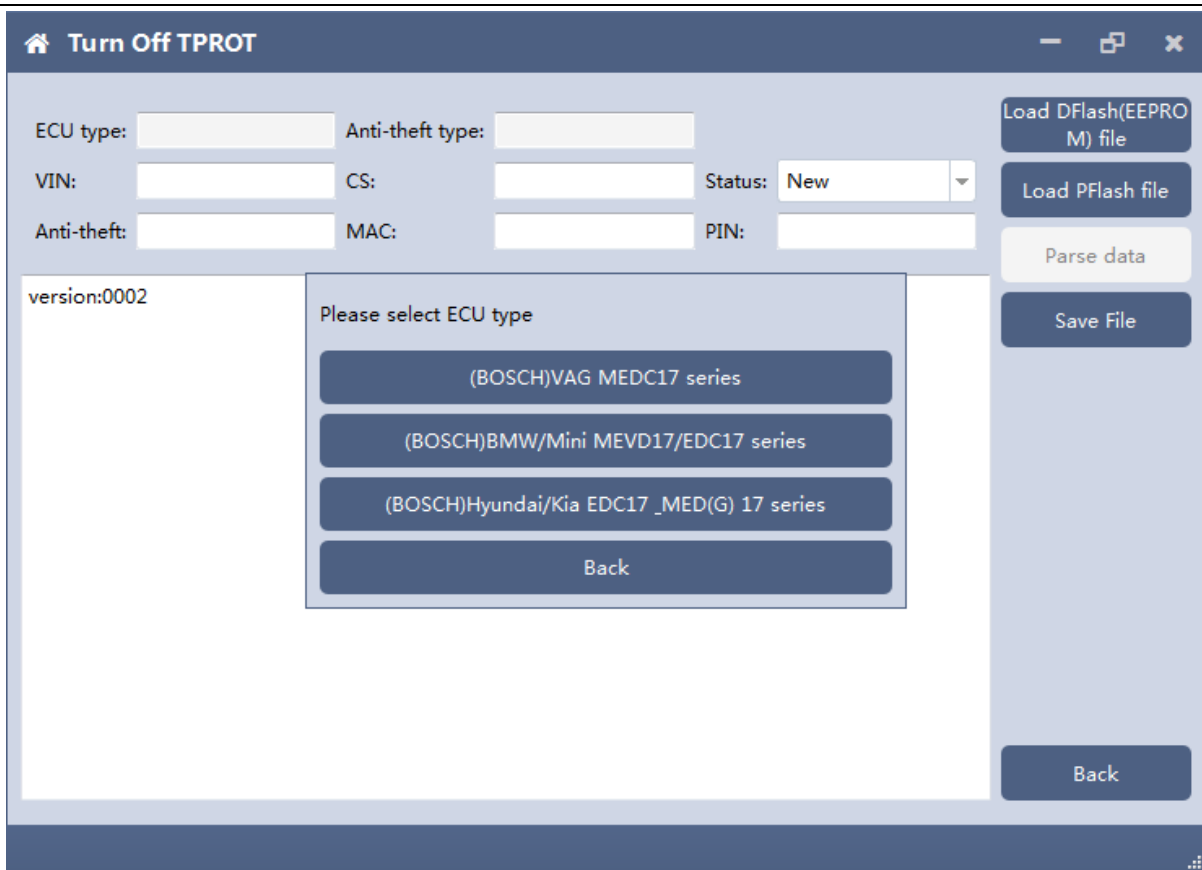


## 9.5 Close TPROT

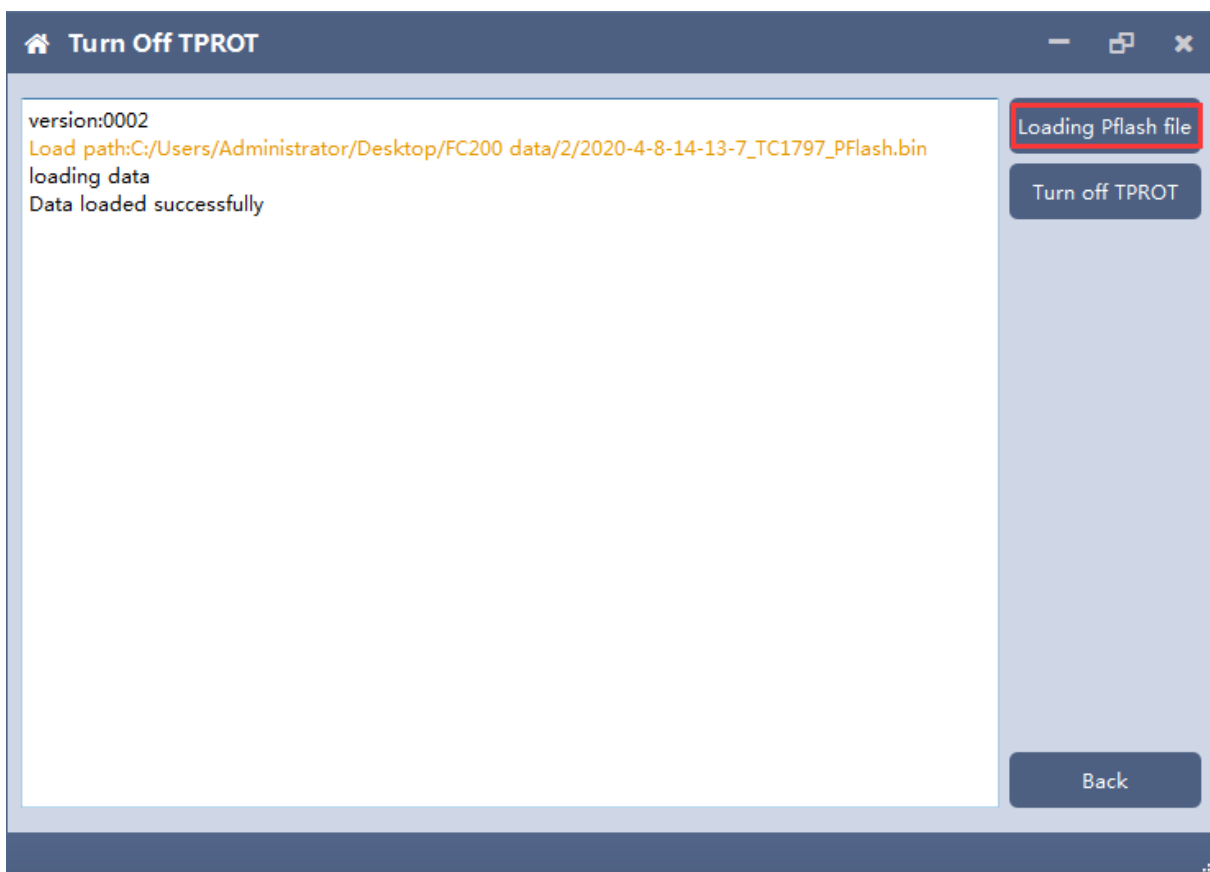
### 9.5.1 Select ECU type

Choose correct ECU type, FC200 currently supports the Bosch VAG MEDC17 series, BMW / mini MEVD17 / EDC17 series, Hyundai / Kia EDC17 & MED (G) 17 series .





## 9.5.2 Load PFLASH data



### 9.5.3 Close TPROT and save the file.

