

## How to repair FEM/BDC Version is not supported ,please upgrade FEM/BDC first

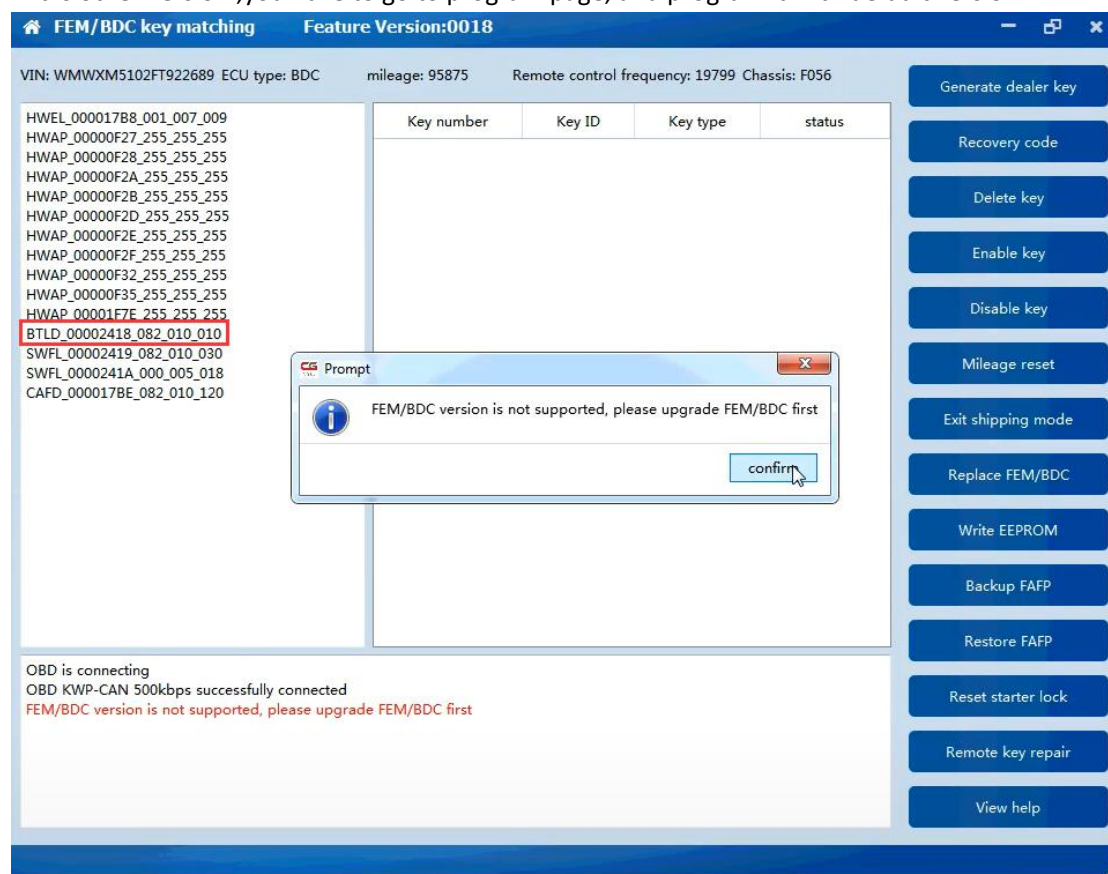
When it shows this error ,follow the steps to do

Check the BTLD version

G series car can not support

If it is 82 or 83 , you have to go to program page .the advanced mode , and program it with 80 version

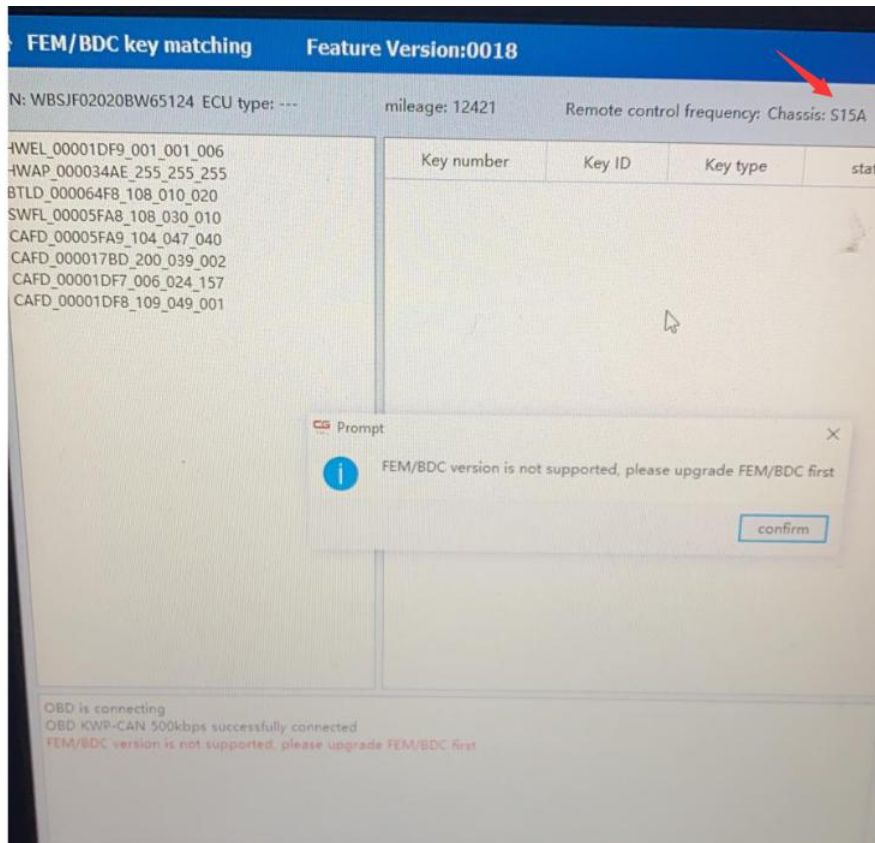
If it is other version ,you have to go to program page, and program it with default version



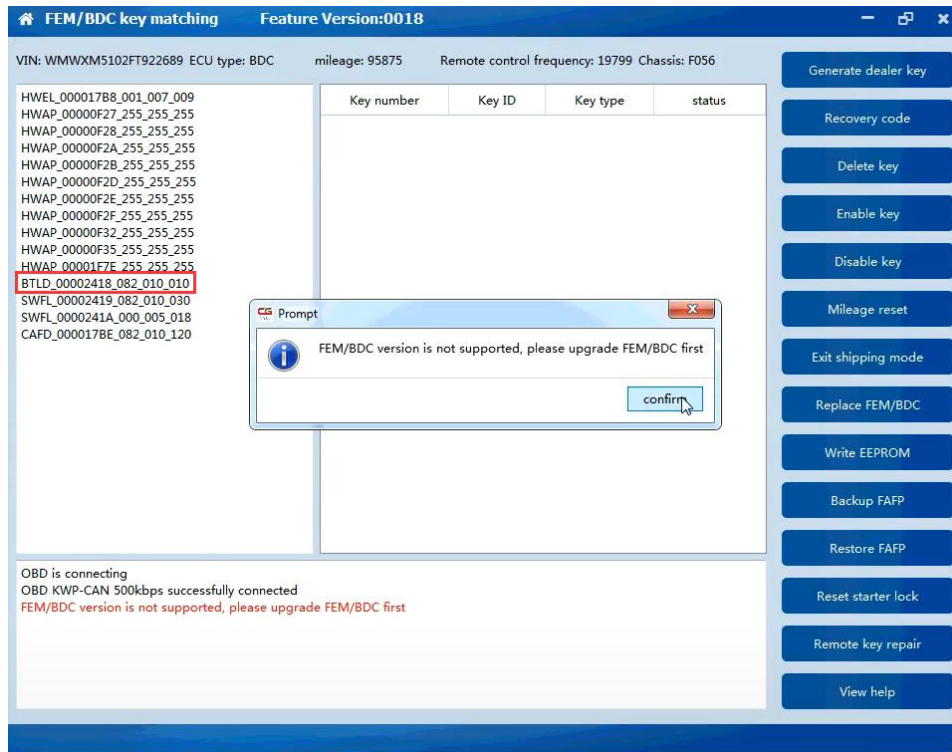
### 1 Can not support G series

If your FEM shows as the picture below shows (FEM2 or BDC2 ), Then no need to do operation , send it to dealer to do.

If it not shows you F chassis in CGDI BMW software , Then means it not supports with CGDI

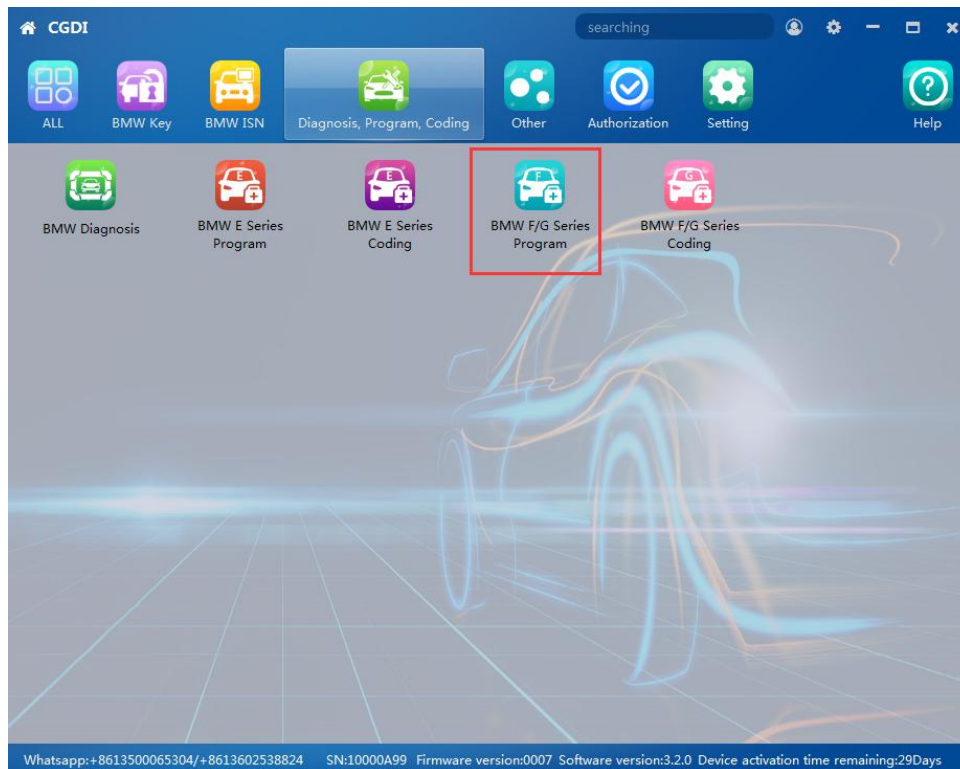


## 2 If it is 82 or 83 version



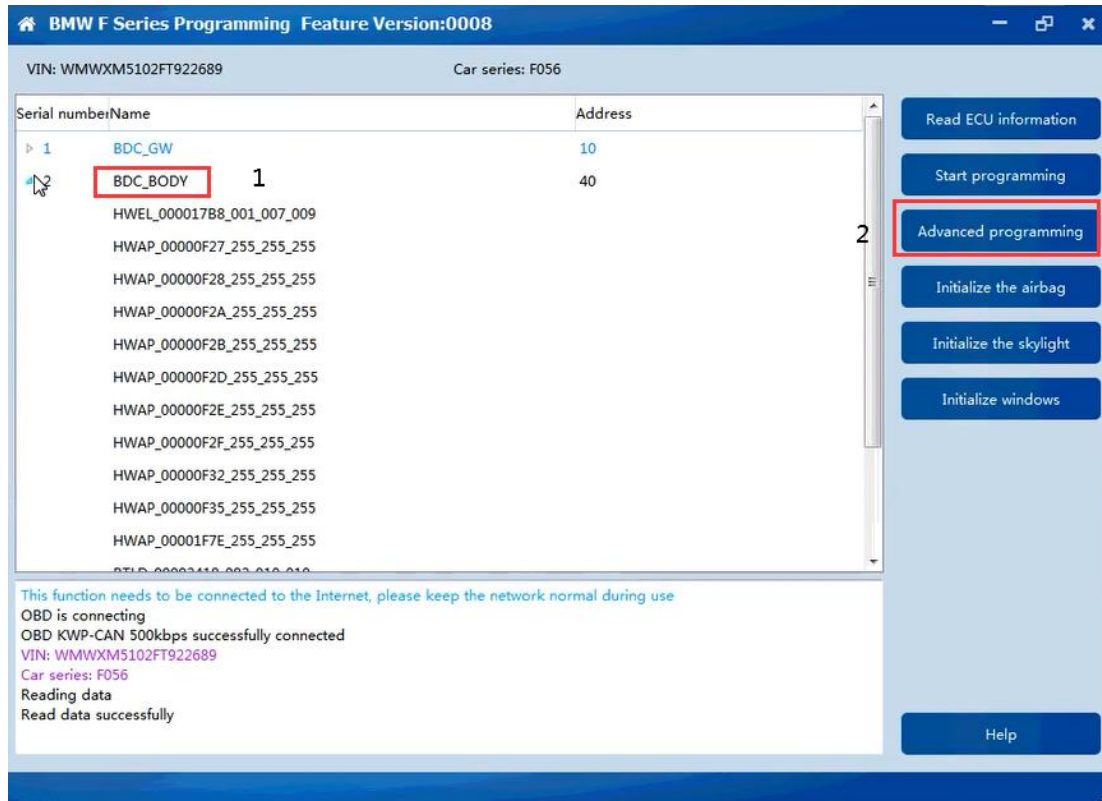
## 2.1 program your FEM with advanced mode

Go to "BMW F/G series program"

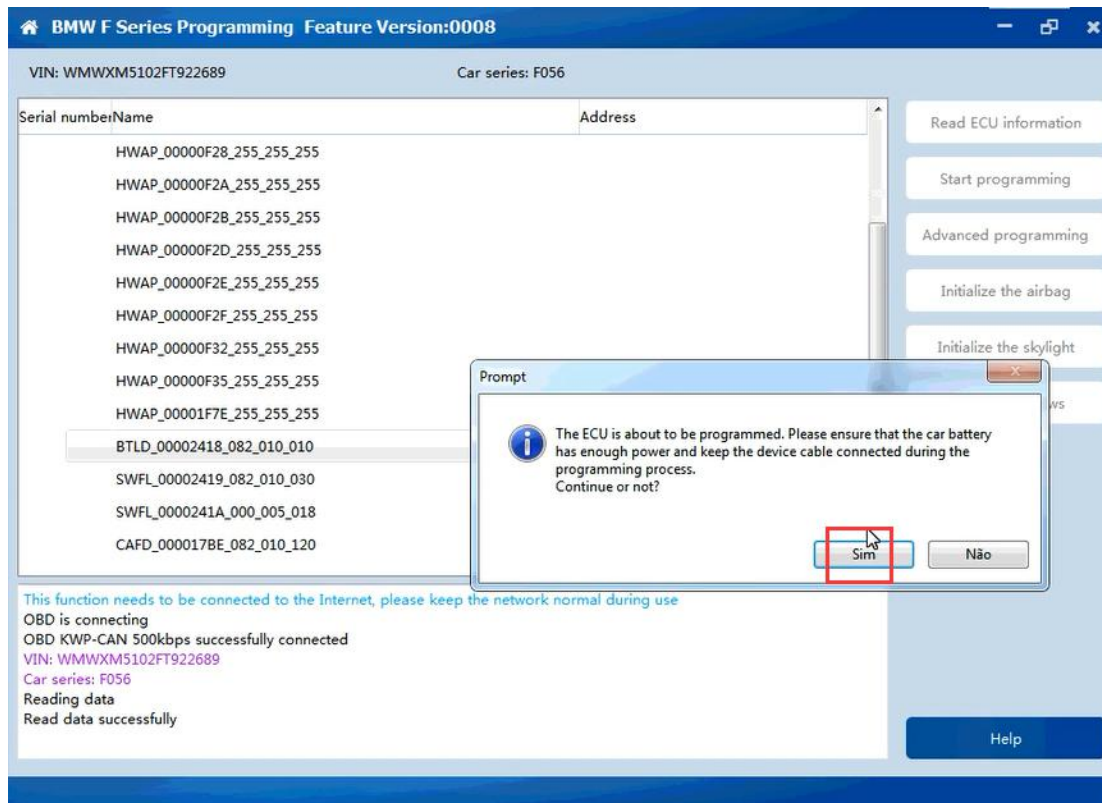


Choose BDC-body

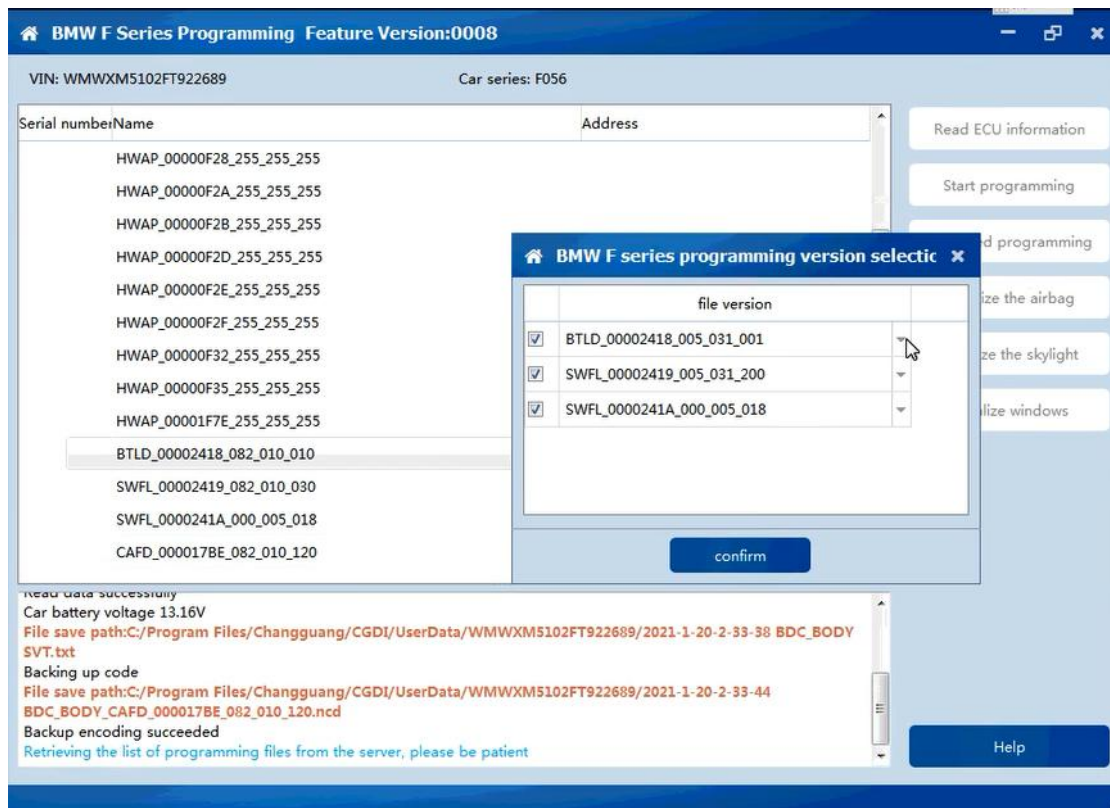
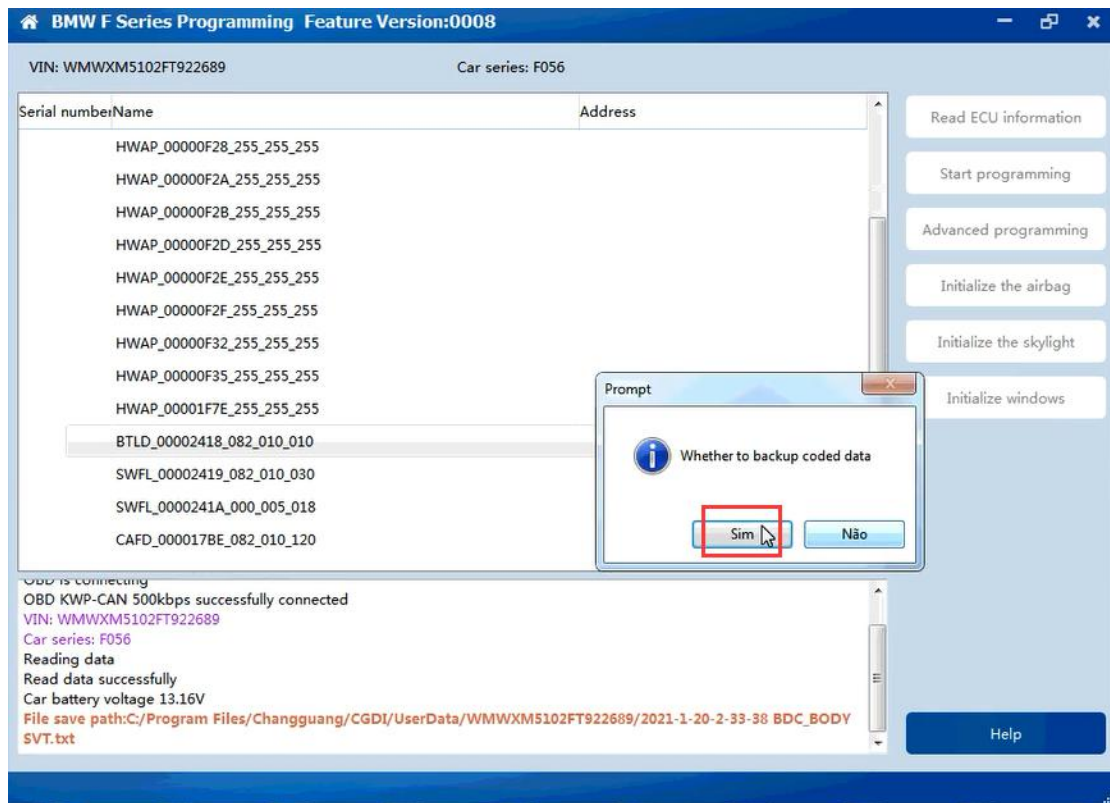
Then choose advanced programming



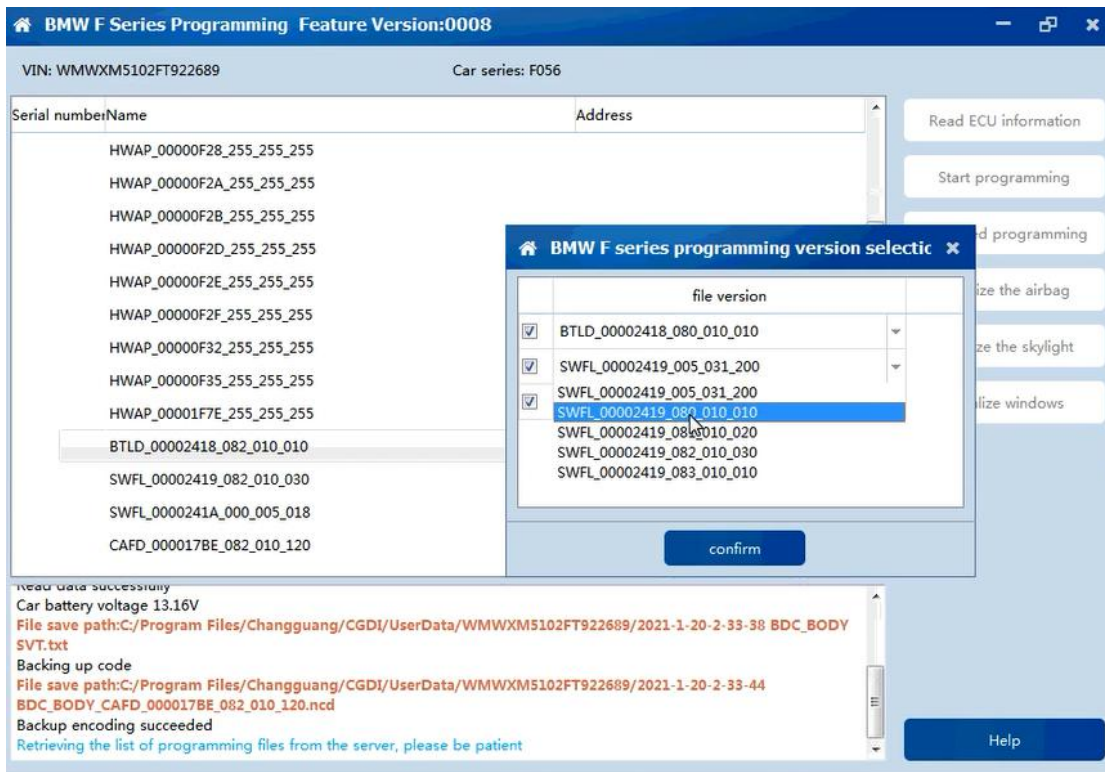
Follow the prompt "The ECU is about to be programmed. Please ensure that the car battery has enough power and keep the device cable connected during the programming process. Click on "Yes" to continue.



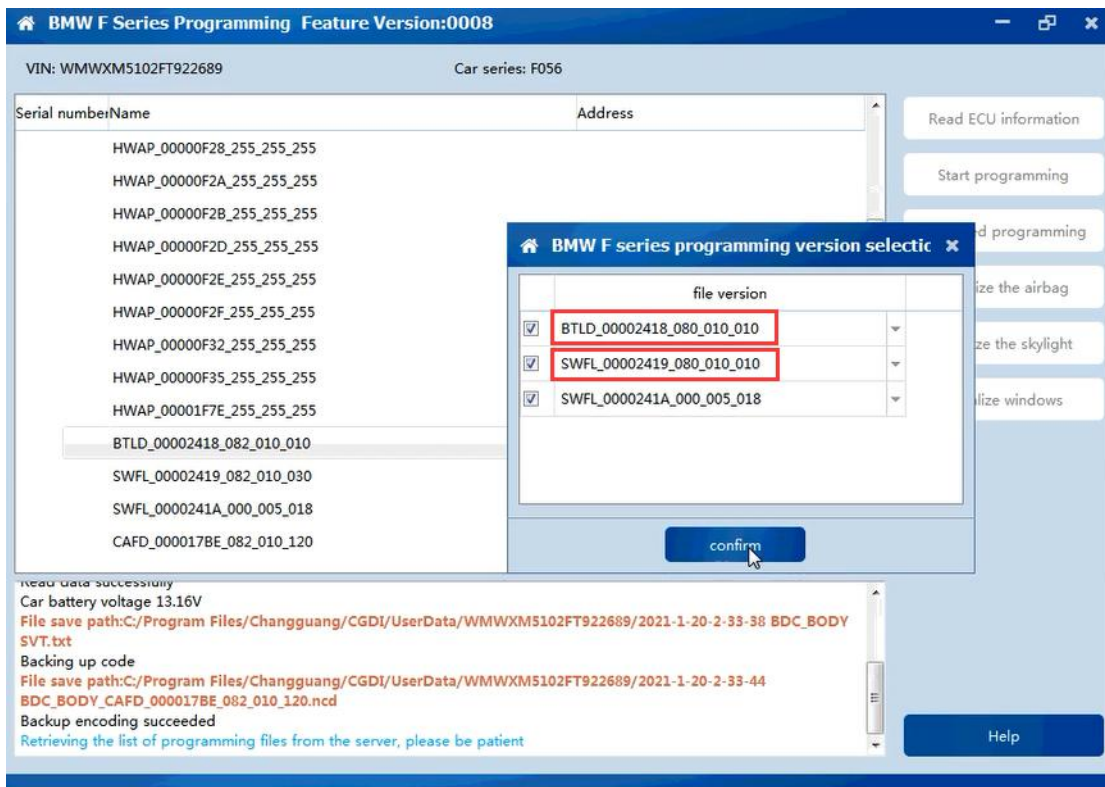
Click on "Yes" to backup the coded data.



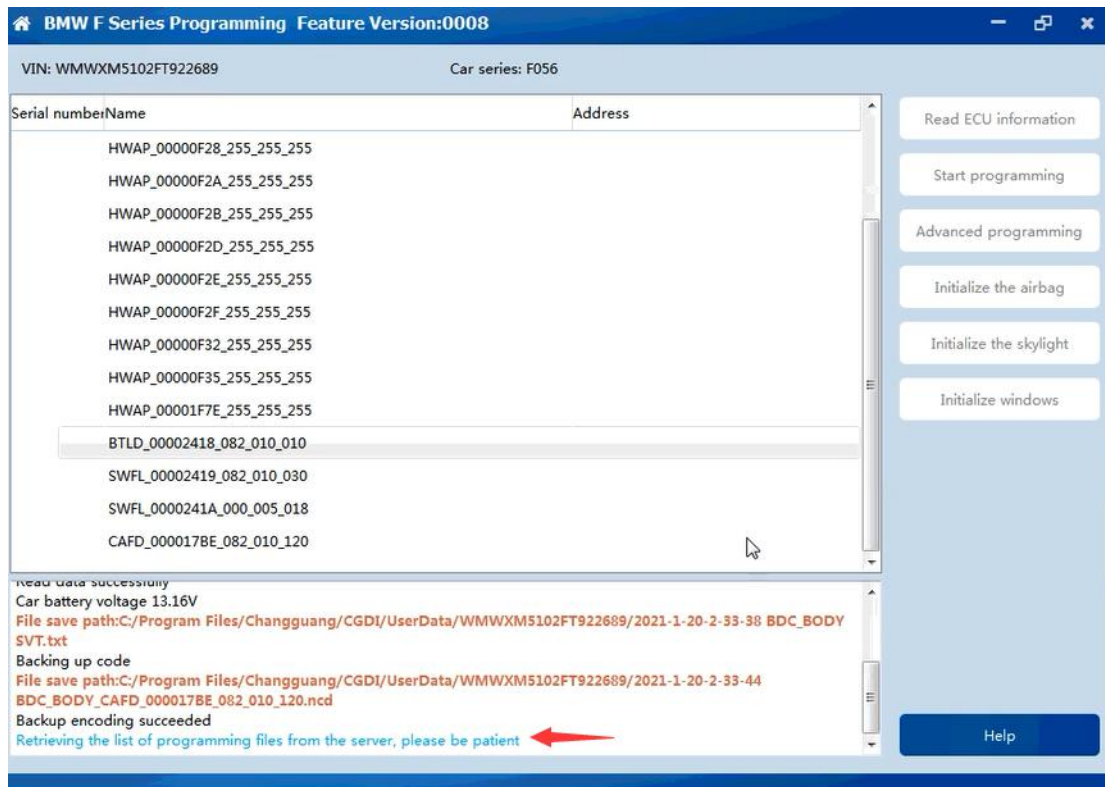
Next is BMW F series programming version selection, please choose "BTLD-80", the next one is to choose "SWFL-80".



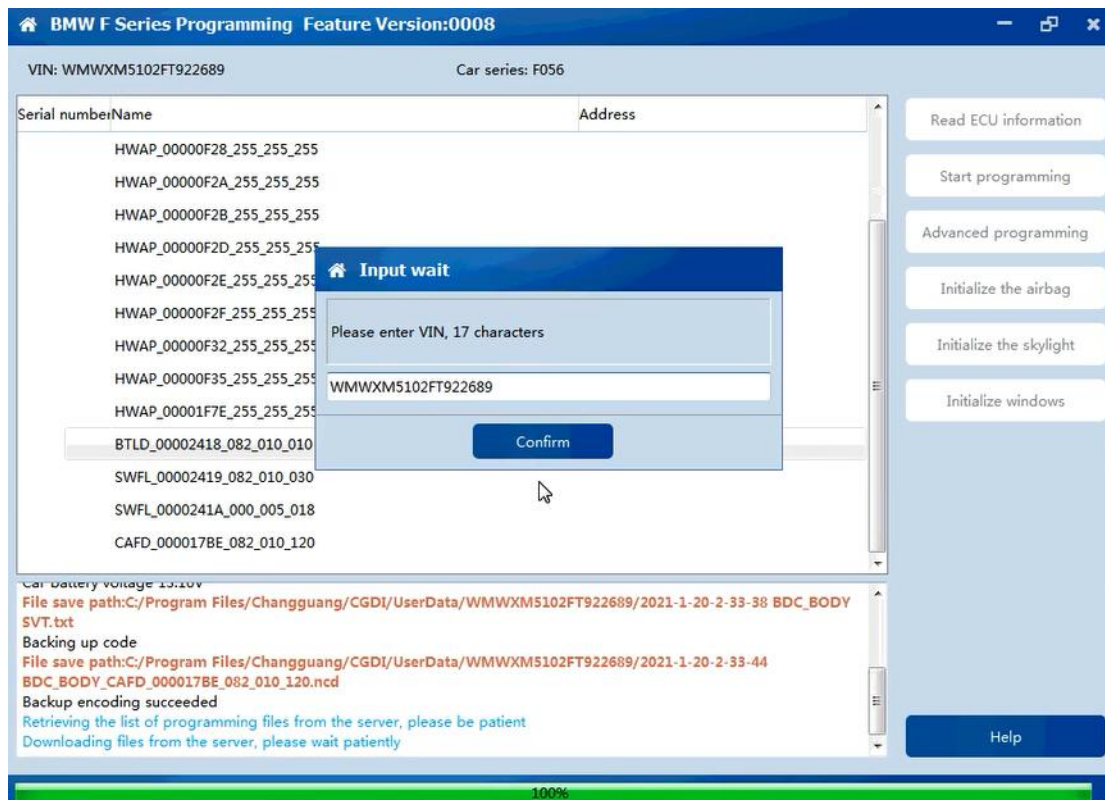
Then click on “Confirm” .



It will get file from the server , the responding time depend on your internet ,some times it may have to wait longer .Be patient please

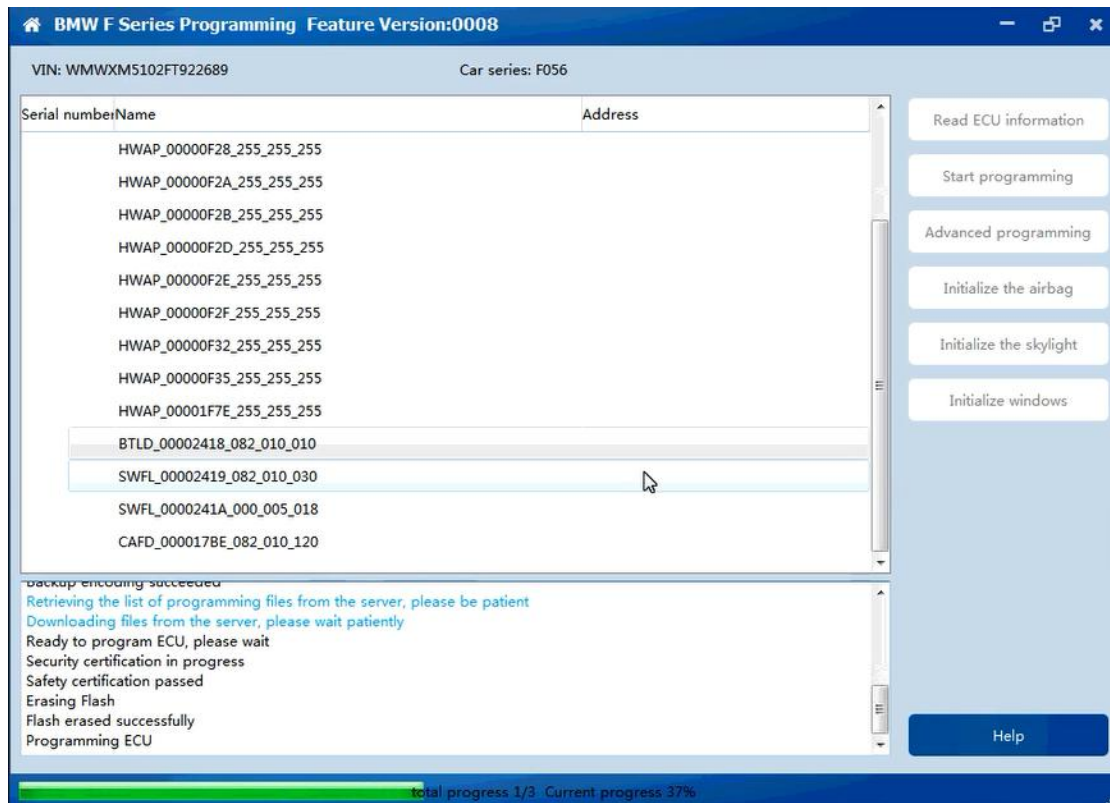


When it shows 100%, It will tip you VIN 17 characters. Check it then click confirm



Then it will program ECU...It will take about 8 minutes.

When it shows 100%, it means ECU programmed and succeed.



Then it will have two tips

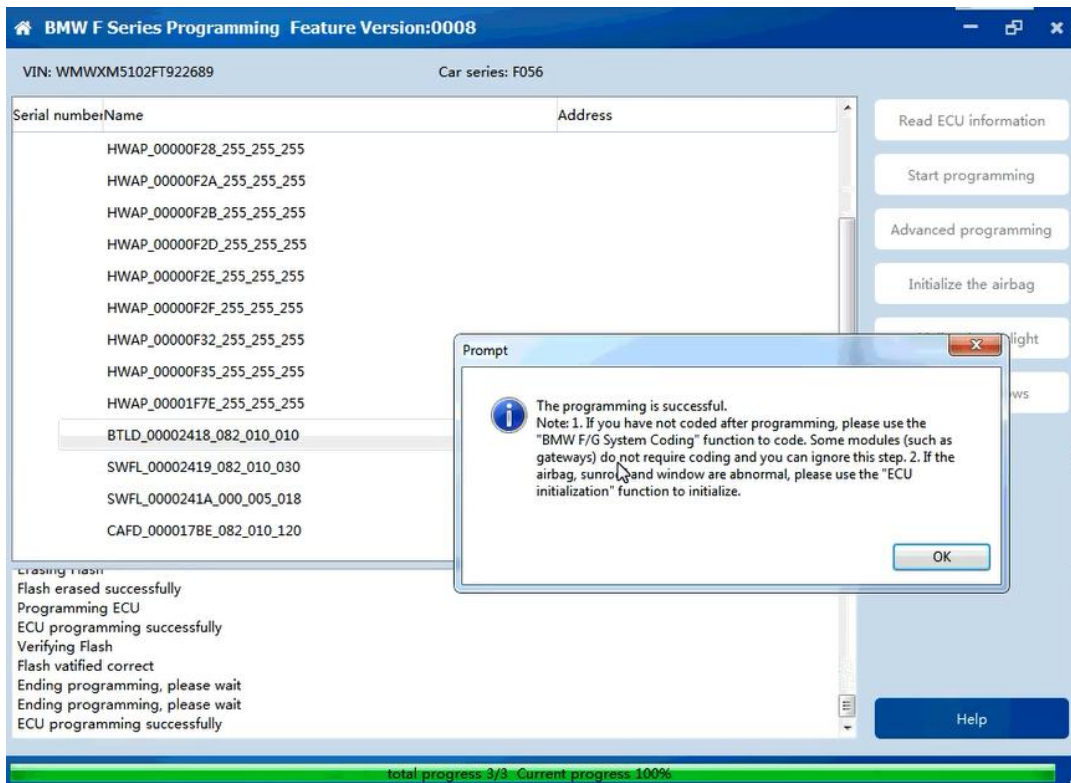
Note 1: When you need to code FEM .**Here better to code your FEM**

**(Or you can add your key first ,then go to code )**

Note2 : if your airbag, sunroof and window are abnormal, please use the “ECU initialization” function to initialize.

Tip: If you Check it in FEM/BDC Key match page, it is expected to work now. But **better you code your FEM first**,Then go to FEM/BDC Key match page , do other steps





## 2.2 Code your FEM

Go to “BMW F/G series program”



Then Choose BDC-body , choose backup coding

The screenshot shows the BMW F series coding software interface. The title bar reads "BMW F series coding" and "Feature Version:000A". The VIN is partially visible as "VIN: ..." and the Car series is "F020". A table lists components:

Serial number	Name	address
1	FEM_GW	10
2	FEM_BODY 1	40

On the right side, there are several buttons: "Read ECU information", "Backup coding" (highlighted with a red box), "encoding", "Recovery code", "Modify VO code", and "Brush out hidden functions". At the bottom right is a "Help" button. The status bar at the bottom indicates: "This function needs to be connected to the Internet, please keep the network normal during use", "OBD is connecting", "OBD KWP-CAN 500kbps successfully connected", "VIN: WBA1A1105EJ789456", "Car series: F020", "Reading data", and "Read data successfully".

It will save your backup file ,then coding succeed

The screenshot shows the BMW F series coding software interface after the backup coding process. The title bar reads "BMW F series coding" and "Feature Version:000A". The VIN is "VIN: ..." and the Car series is "F020". The table lists components:

Serial number	Name	address
1	FEM_GW	10
2	FEM_BODY	40

On the right side, there are several buttons: "Read ECU information", "Backup coding" (highlighted with a red box), "encoding", "Recovery code", "Modify VO code", and "Brush out hidden functions". At the bottom right is a "Help" button. The status bar at the bottom indicates: "VIN: WBA1A1105EJ789456", "Car series: F020", "Reading data", "Read data successfully", "This process needs to get files from the server, please be patient", "Backing up code", "The backup code file path is:D:/work/软件安装/CGDI BMW/CGDI/UserData/WBA1A1105EJ789456/2021-2-5-12-14-41 FEM\_BODY\_CAFD\_00000794\_018\_070\_005.ncd", and "Backup encoding succeeded" (highlighted with a red arrow).

## 2.3 Check FEM/BDC Key match page

It can work now ,it will update ECU program ,Make sure your battery has enough power

FEM/BDC key matching Feature Version:0018

VIN: WMWXM5102FT922689 ECU type: BDC mileage: 95875 Remote control frequency: 19799 Chassis: F056

HWEL\_000017B8\_001\_007\_009  
HWAP\_00000F27\_255\_255\_255  
HWAP\_00000F28\_255\_255\_255  
HWAP\_00000F2A\_255\_255\_255  
HWAP\_00000F2B\_255\_255\_255  
HWAP\_00000F2D\_255\_255\_255  
HWAP\_00000F2E\_255\_255\_255  
HWAP\_00000F2F\_255\_255\_255  
HWAP\_00000F32\_255\_255\_255  
HWAP\_00000F35\_255\_255\_255  
HWAP\_00001F7E\_255\_255\_255  
BTLD\_00002418\_080\_010\_010  
SWFL\_00002419\_080\_010\_010  
SWFL\_0000241A\_000\_005\_018

Key number	Key ID	Key type	status
------------	--------	----------	--------

OBID is connecting  
OBID KWP-CAN 500kbps successfully connected

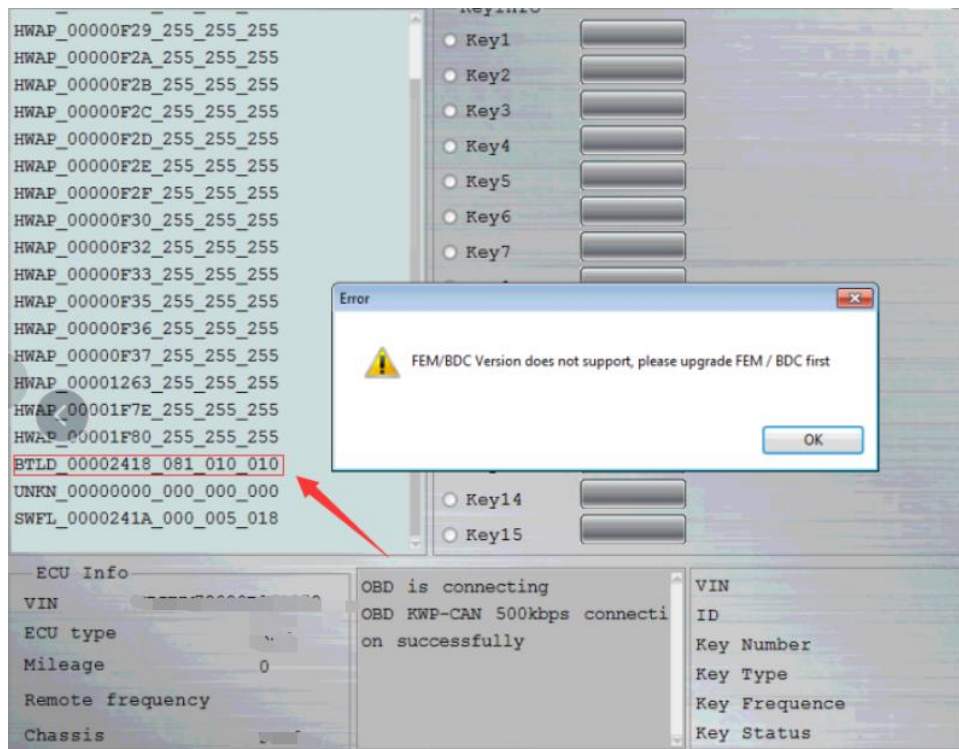
Generate dealer key  
Recovery code  
Delete key  
Enable key  
Disable key  
View help

**Prompt**

The current FEM/BDC needs to update the ECU program before matching the key. Please ensure that the car battery has enough power and keep the device cable connected during the programming process. Continue or not?

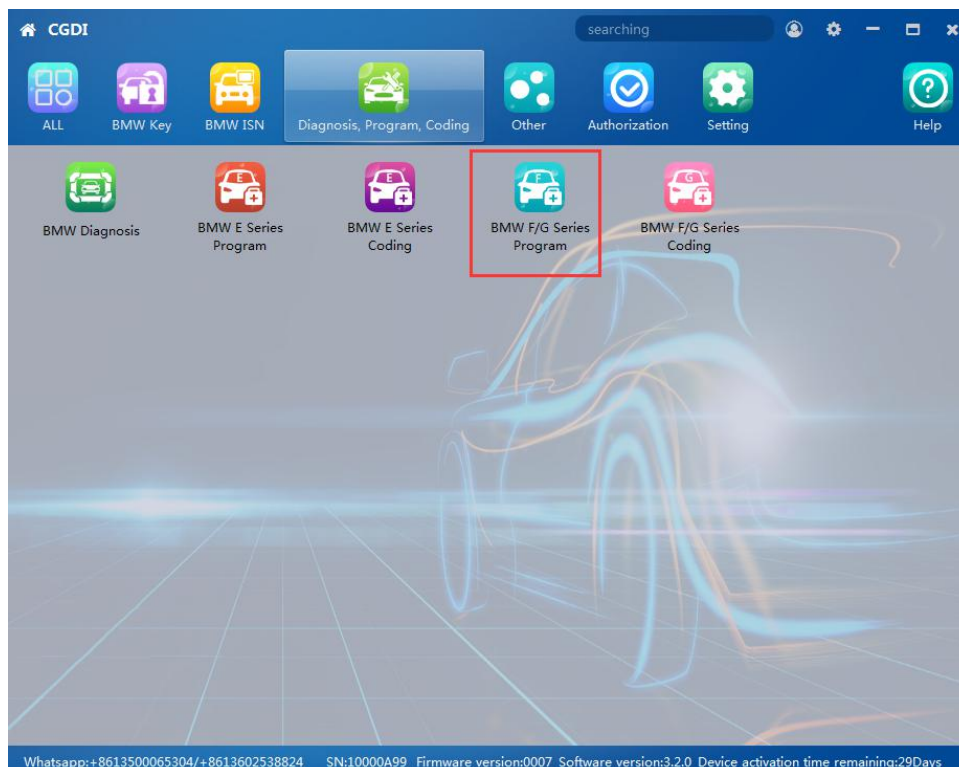
Sim Não

### 3 If it is not 82 or 83 version



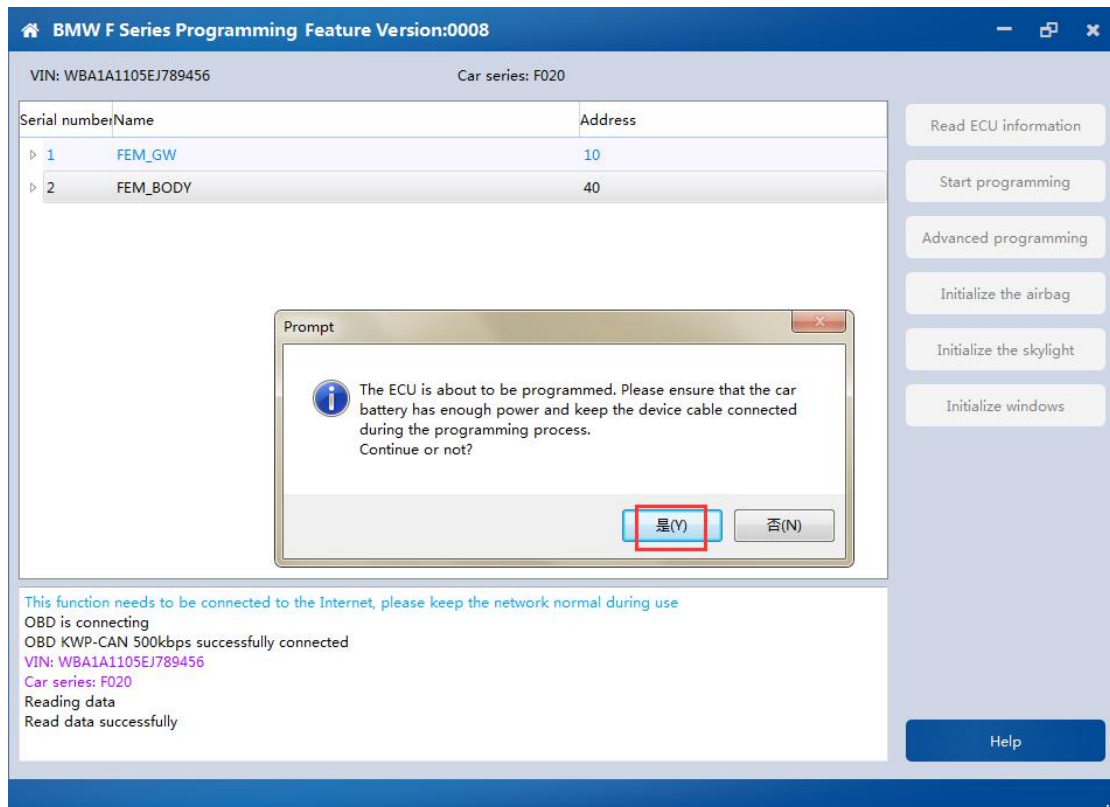
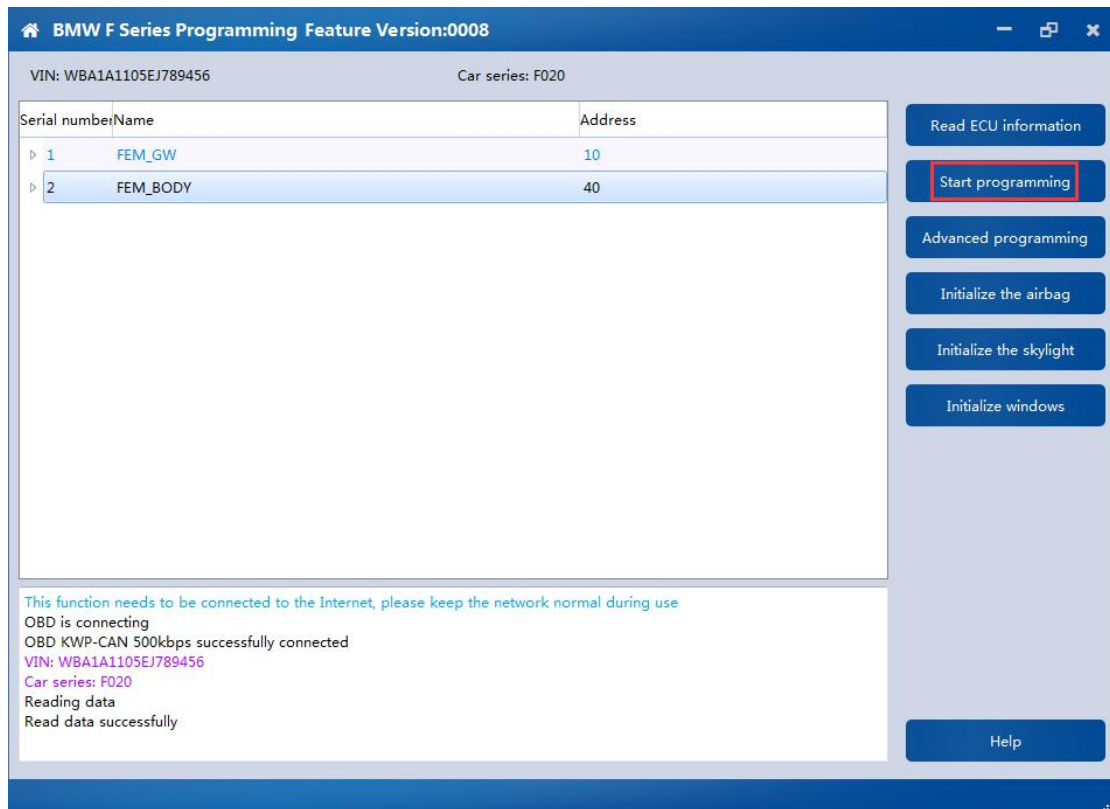
### 3.1 program your FEM

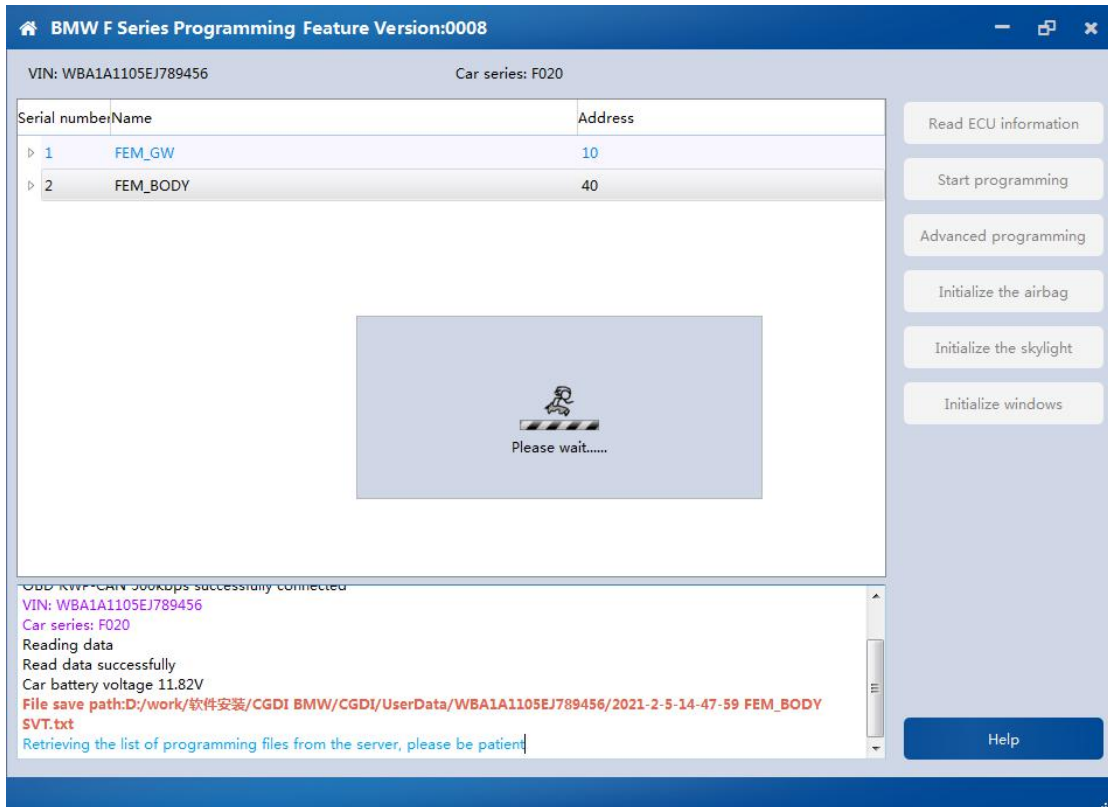
Go to "BMW F/G series program"



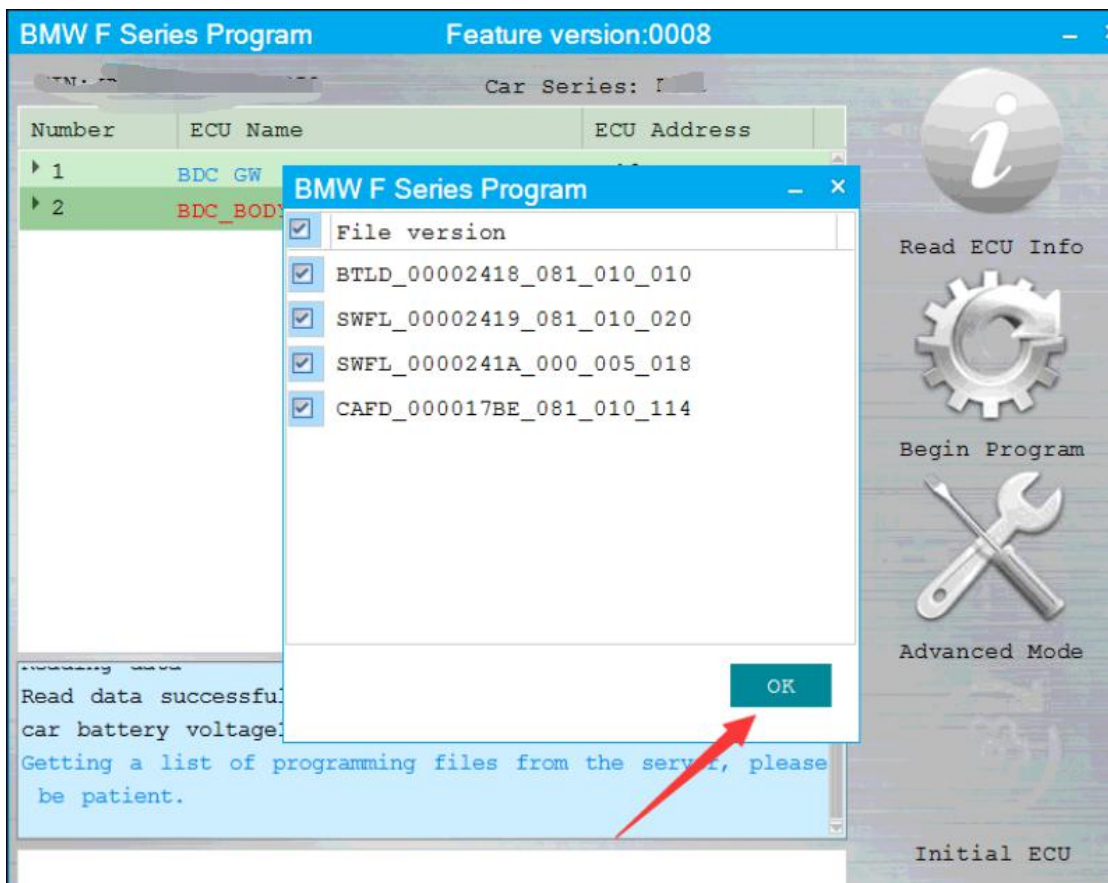
Choose BDC-body

Then choose start programming





Here no choice can choose , click ok to program it directly.



The next steps is same as 2.2 and 2.3 (No repeat pic here )

It will get file from the server , the time depends on your internet ,some times it may need wait longer .Be patient please

When it shows 100%, It will tip you VIN 17 characters. Check it then click to confirm

Then it will program ECU···It will take about 8 minutes.

When it shows 100%, it means ECU programmed and succeed.

Then it will have two tips

Note 1: When you need to code FEM .**Here better to code your FEM**

**(Or you can add your key first ,then go to code )**

Note2 : if your airbag, sunroof and window are abnormal, please use the “ECU initialization” function to initialize.

If you Check it in FEM/BDC Key match page, it shoud can work now. But **better you code your FEM first**,Then go to FEM/BDC Key match page ,take other steps

### **3.2 Code your FEM**

Go to “BMW F/G series program  
Then Choose BDC-body , choose backup coding  
It will save your backup file ,then coding succeed

### **3.3 Check FEM/BDC Key match page**

It can work now ,it will update ECU program ,Make sure your battery has enough power

<https://youtu.be/X25OixaHTgI> CGDI BMW ~FEM BDC version is not supported