

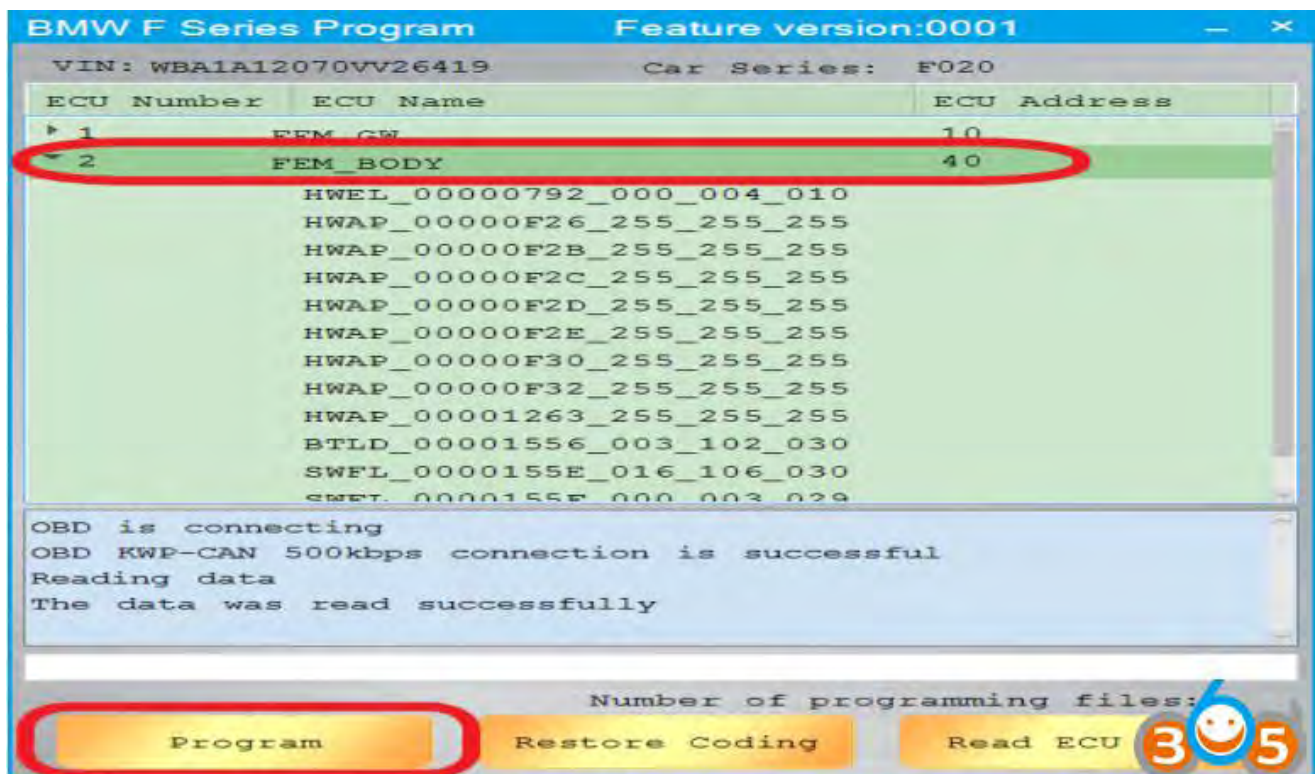
## CGDI BMW F-series FEM Body programming:



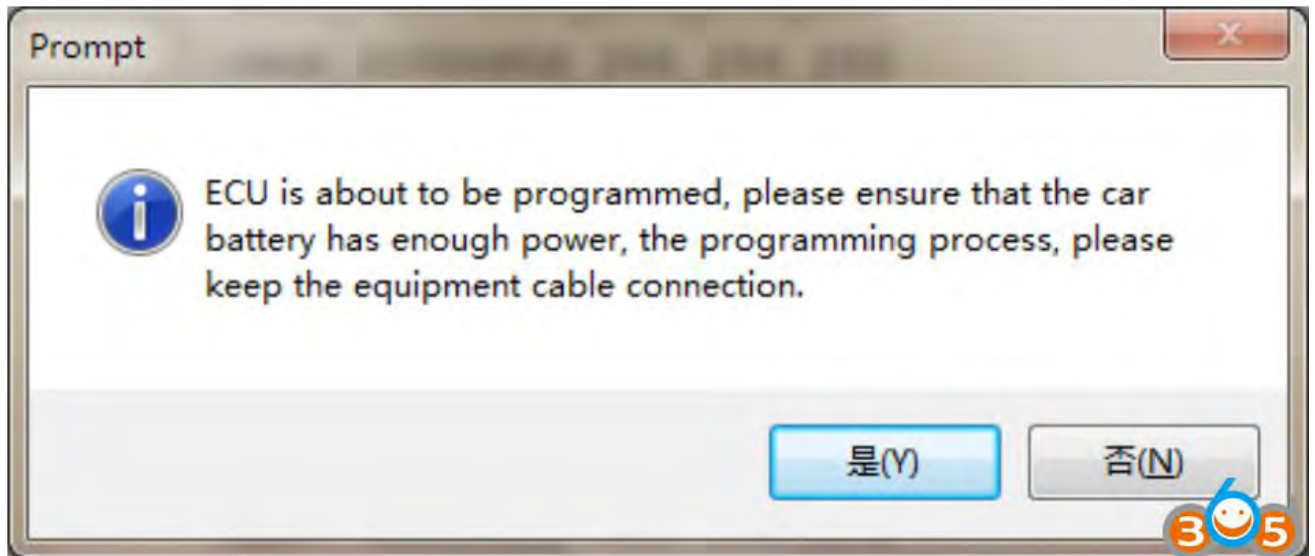
Select "BMW F Series Program"



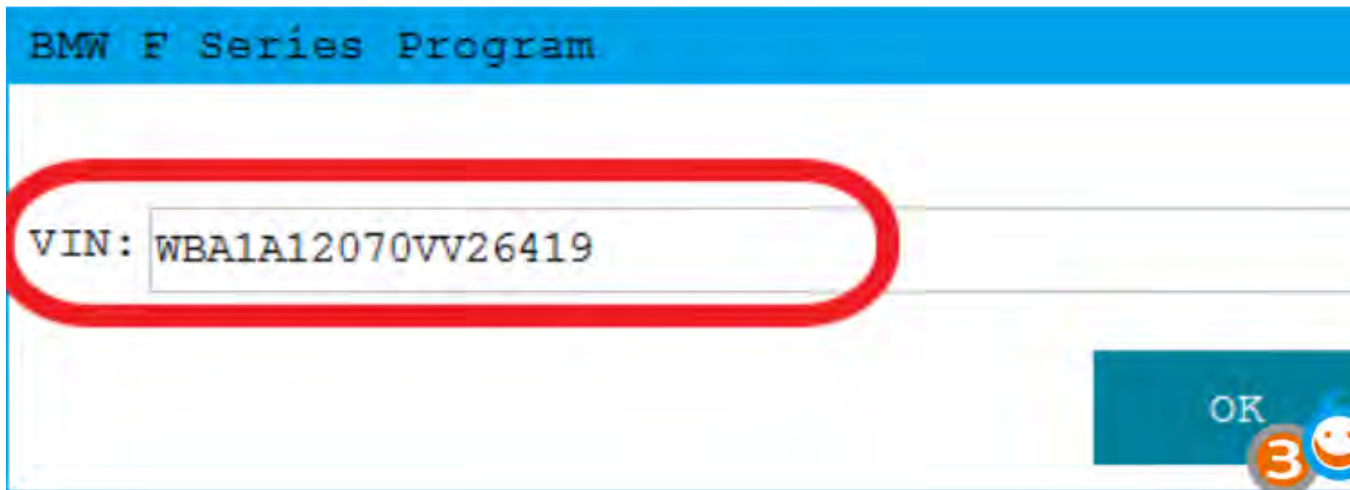
Data was read successfully, display relevant module information



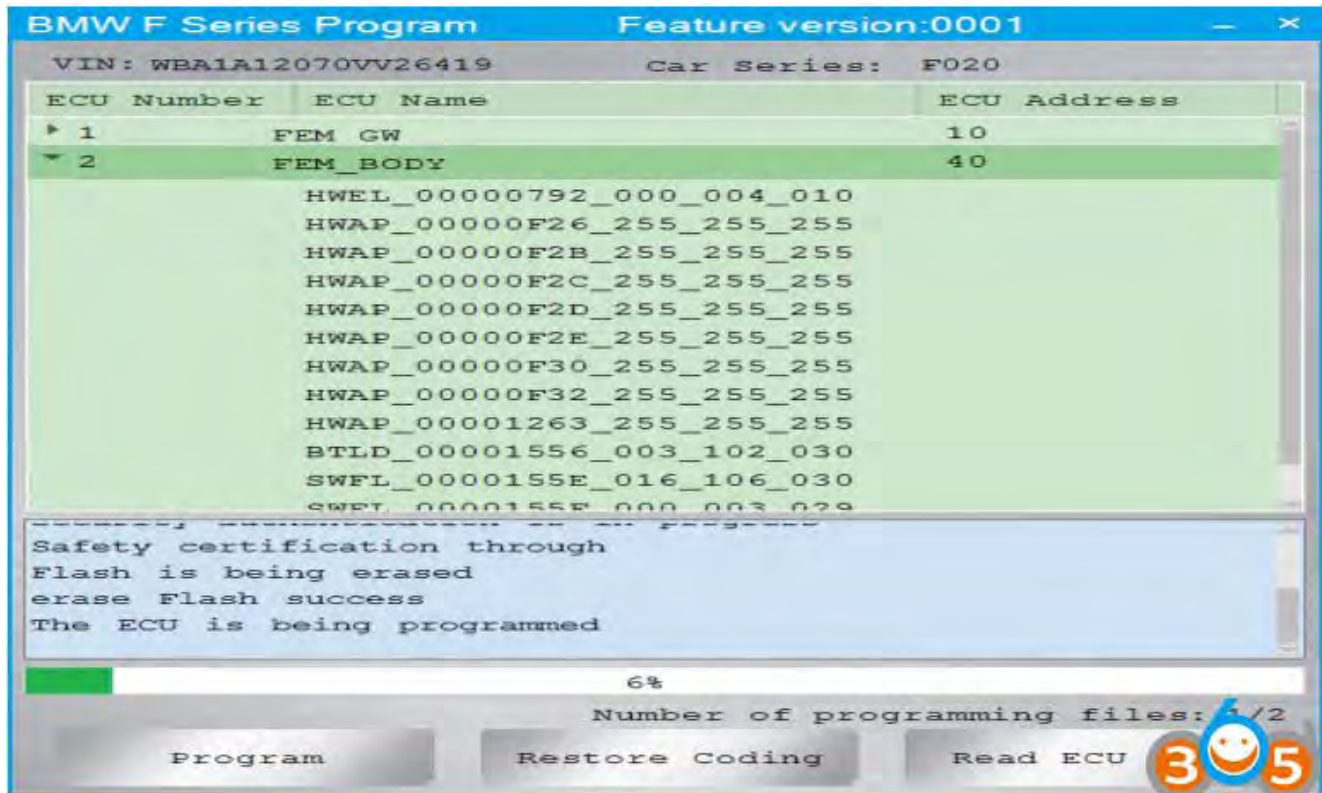
To program FEM-BODY as example, click "program"



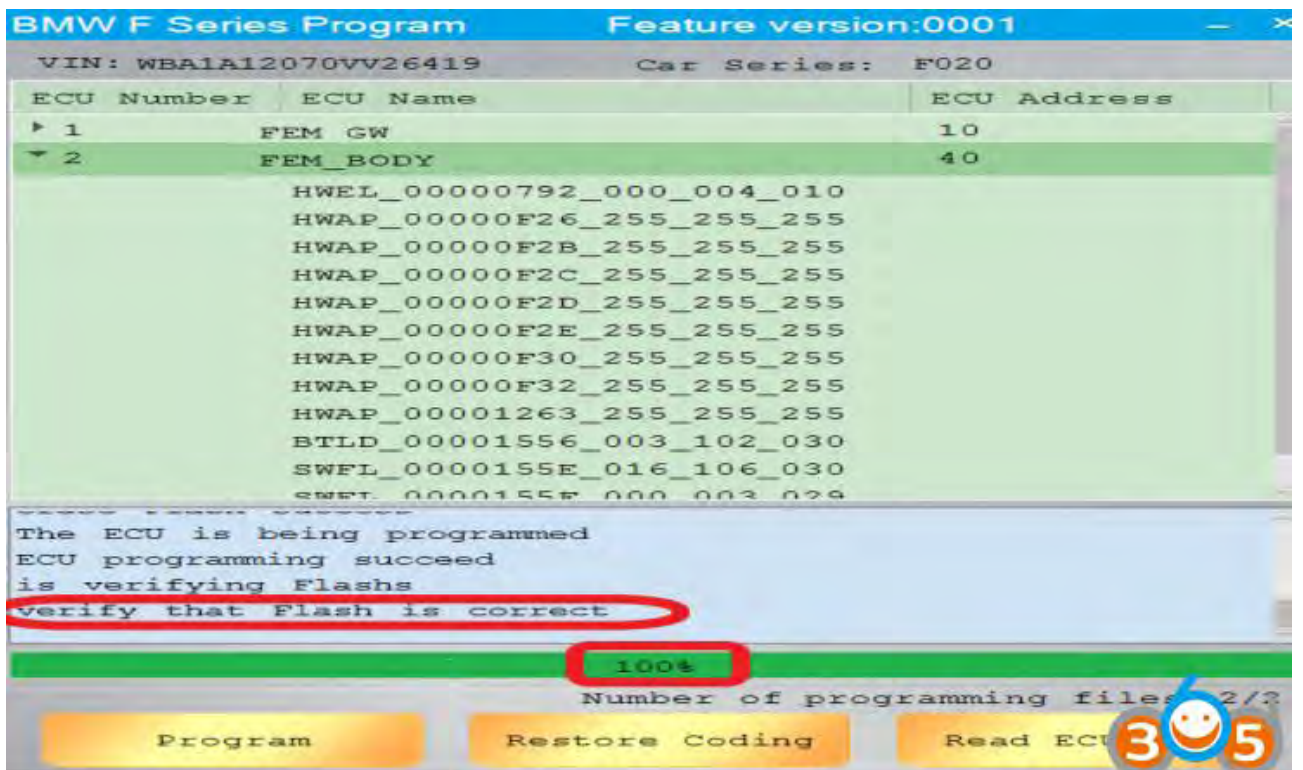
Please ensure that the battery has enough power and click 'yes'



1. Make sure the VIN is correct.
2. Support modification



Programming, please be patient



Verify FLASH correctly and program successfully.

[www.obdii365.com](http://www.obdii365.com)