

How to: change replace the BMW CAS3 MSD80 DME Engine Computer using [CGDI Prog BMW key programmer](#).

When is required:

A secondhand/used DME (MSD80) was to used to replace the original DME (MSD80)

Model example:

BMW E83 CAS3 DME MSV80





Procedure:

Connect [CGDI BMW](#) with vehicle via OBD socket



BMW OBD Key Match



CAS3 Key Match



BMW ISN



FEM/BDC Key Match



CAS4 Key Match



BMW Enable/Disable



BMW F Series Program

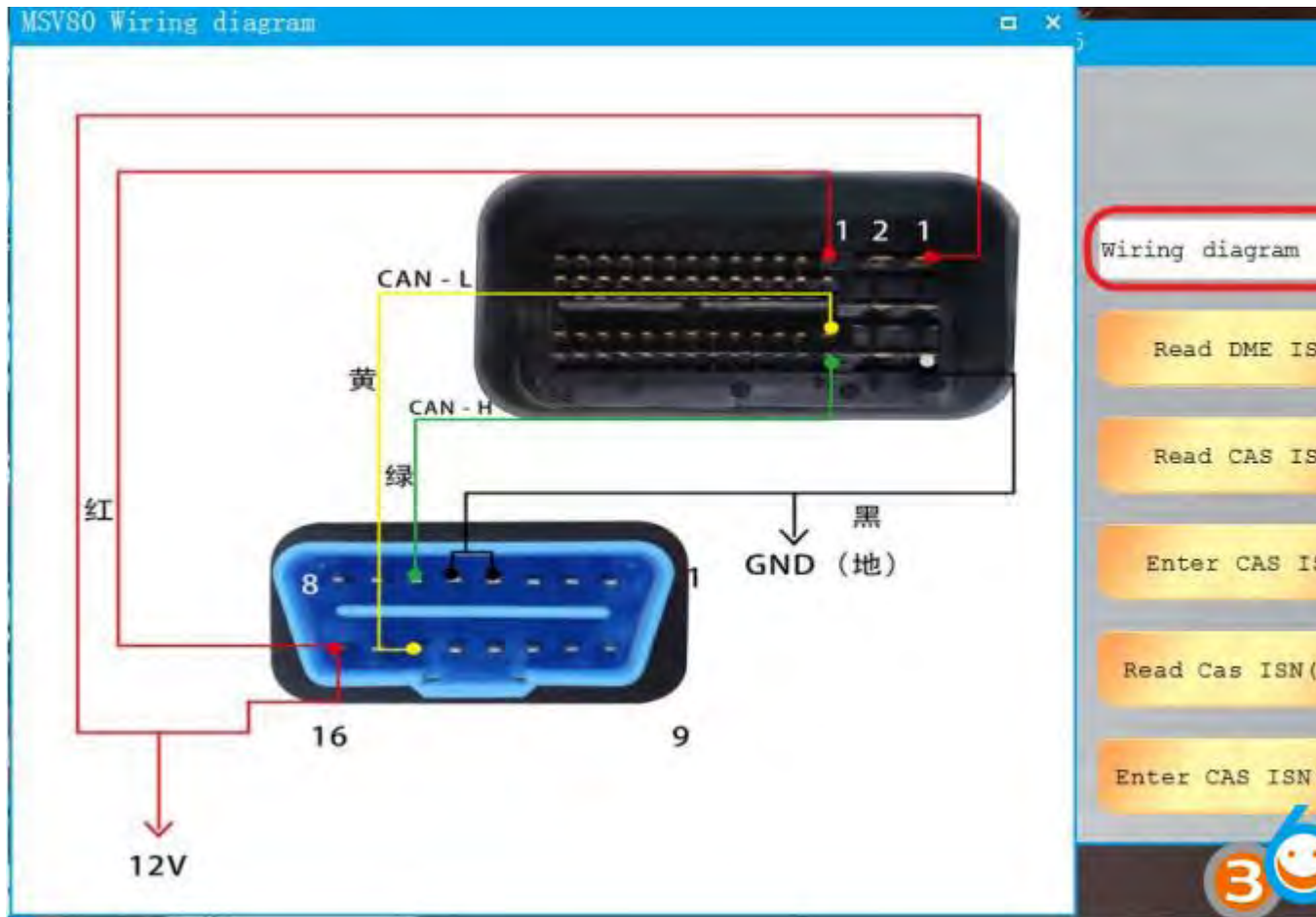


BMW F Series Coding

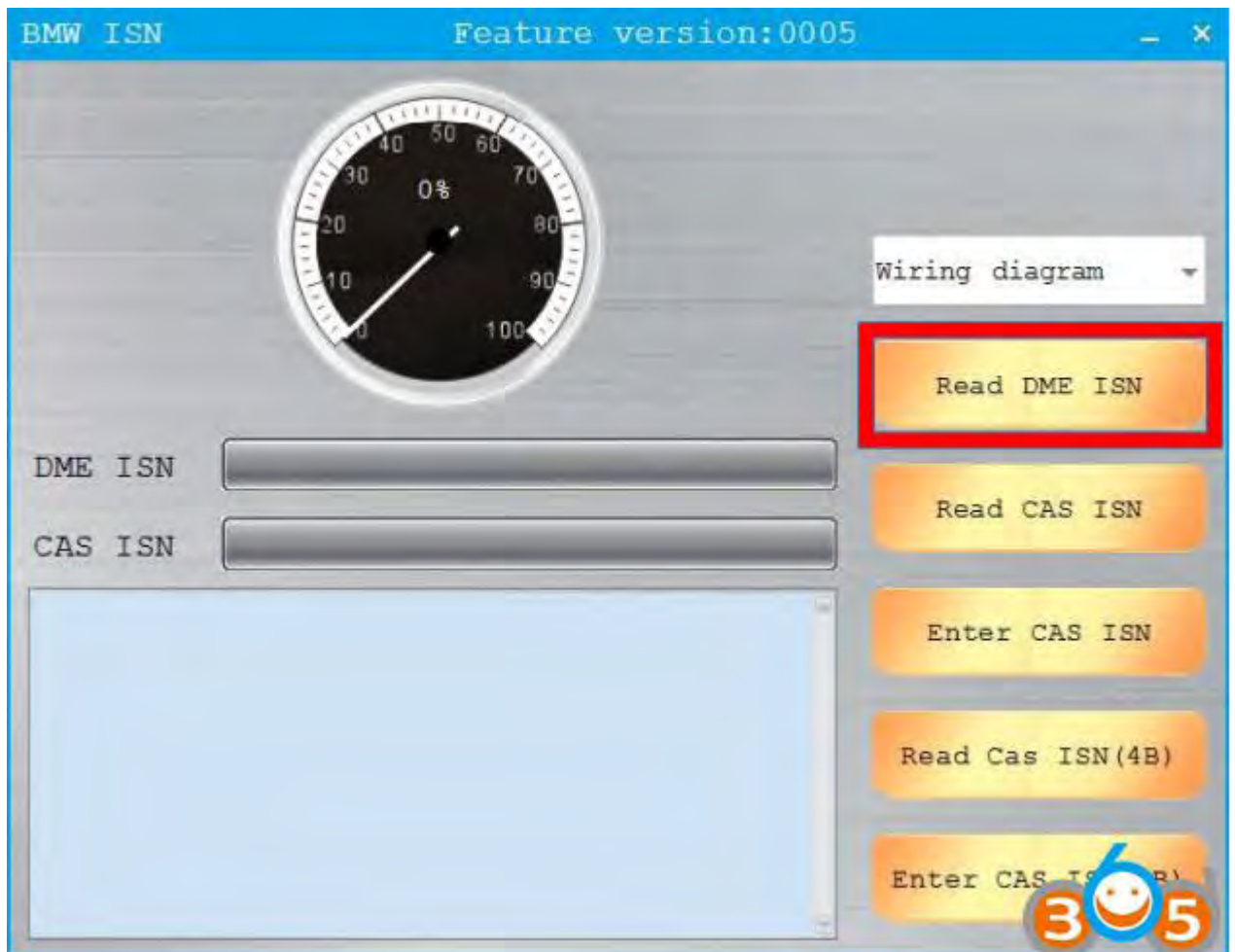


EGS I

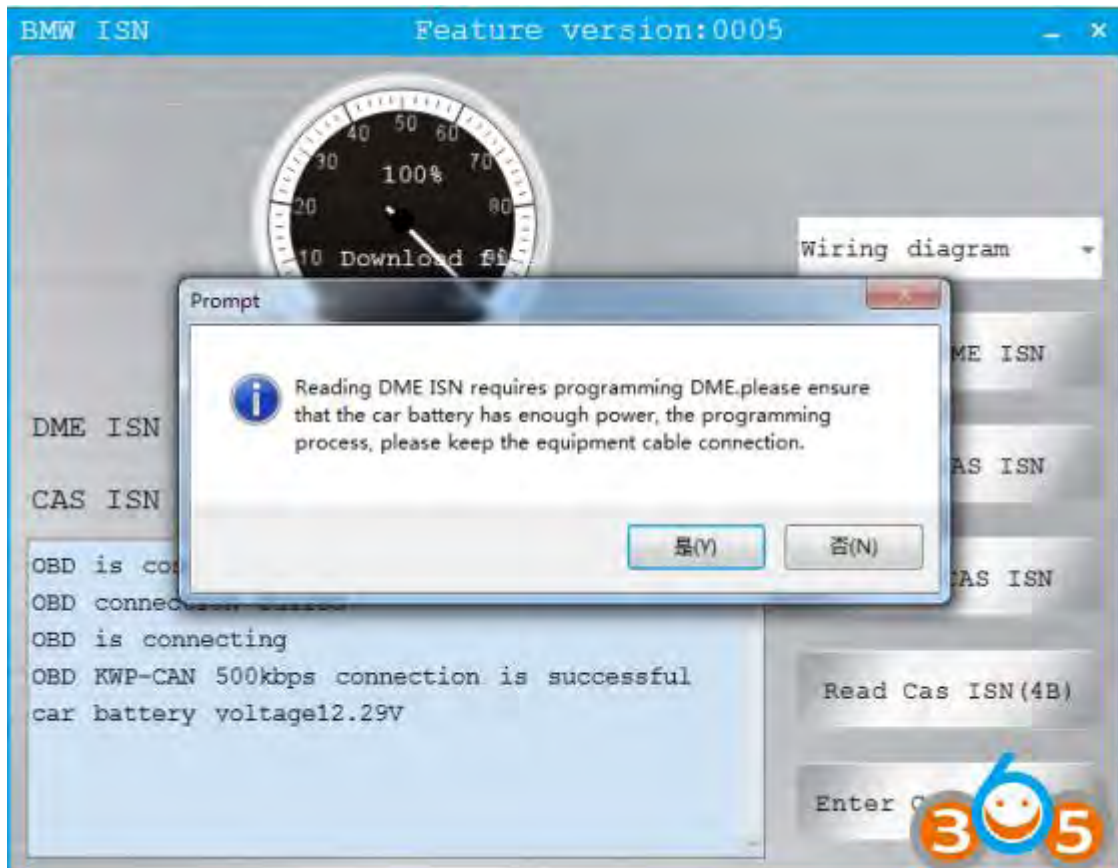
Open CGDI software and select BMW ISN



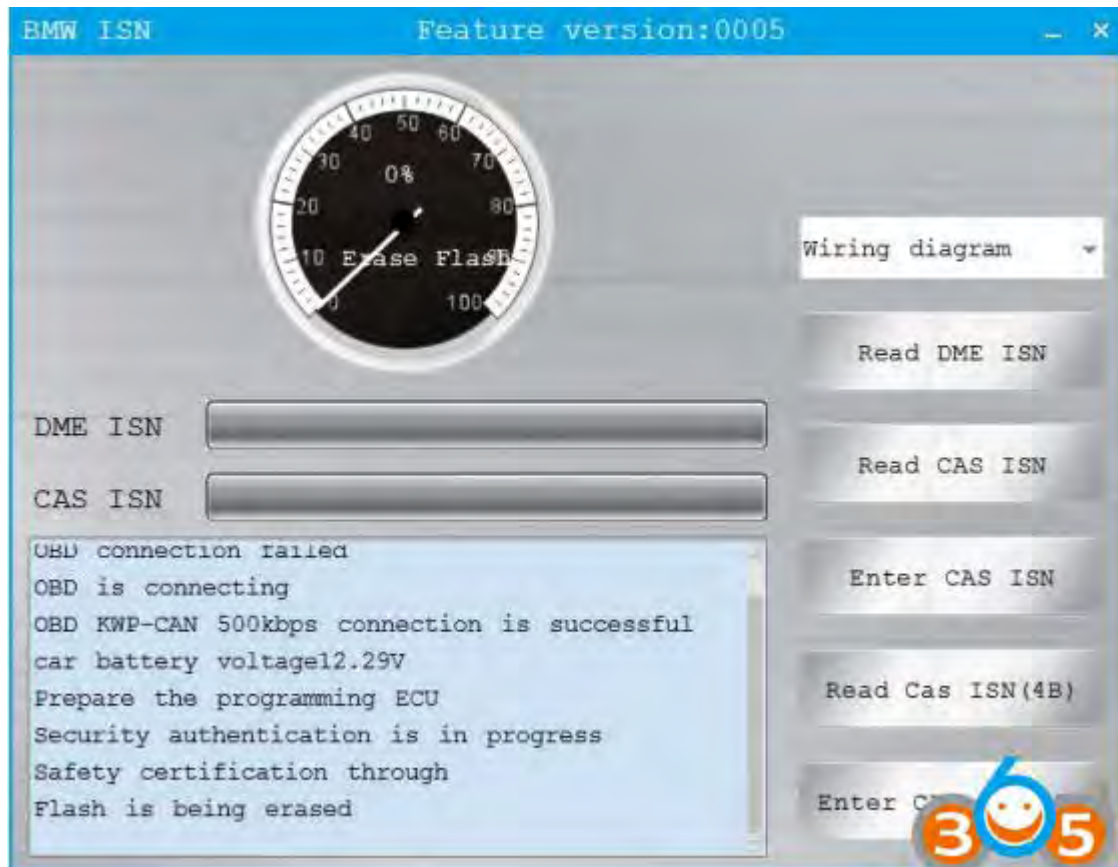
MSV80 Wiring diagram



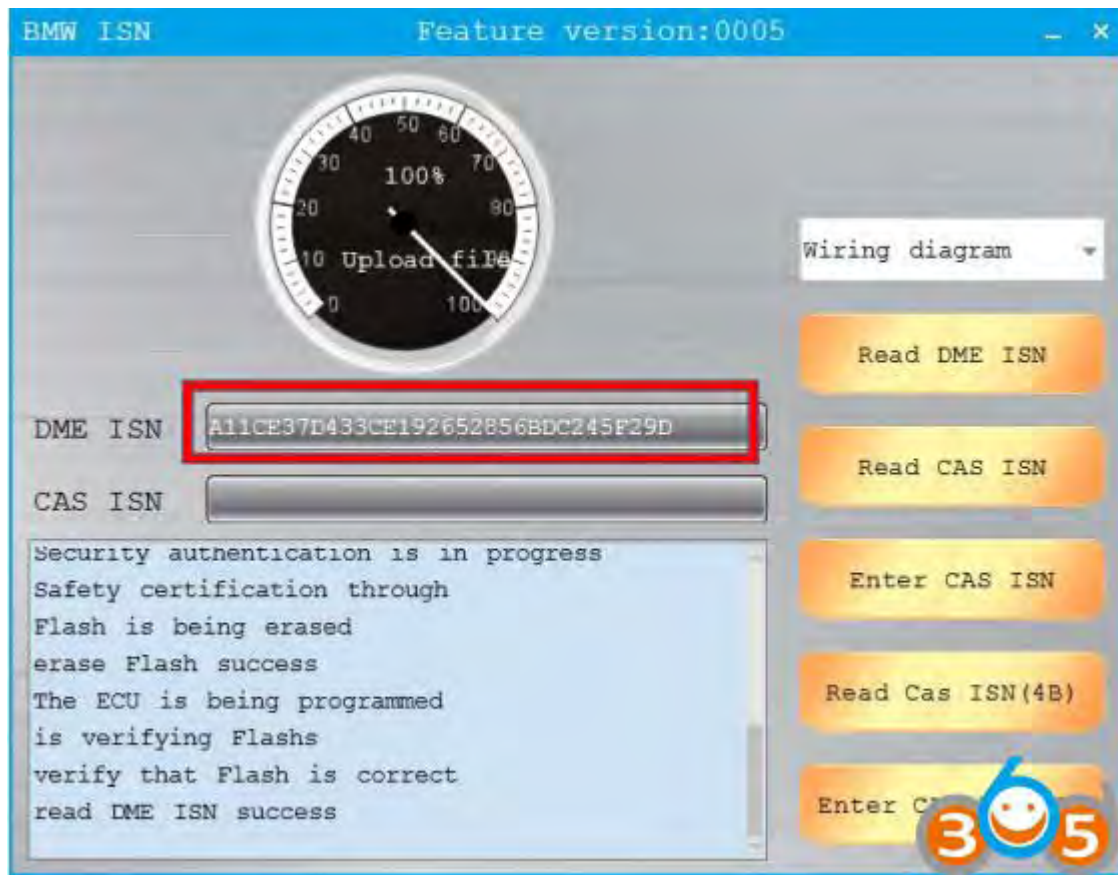
Click to read DME ISN



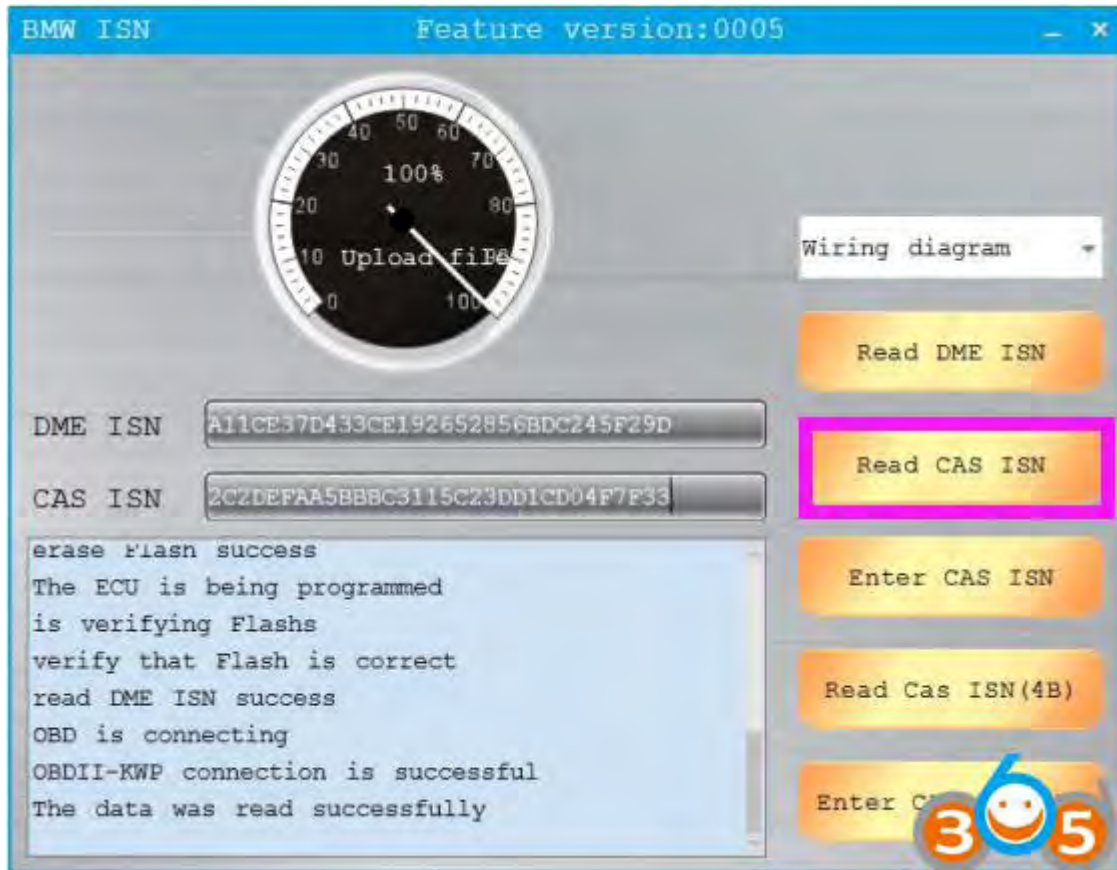
Make sure the battery has enough power and not disconnected



The procedure takes about 5 minutes. Please be patient

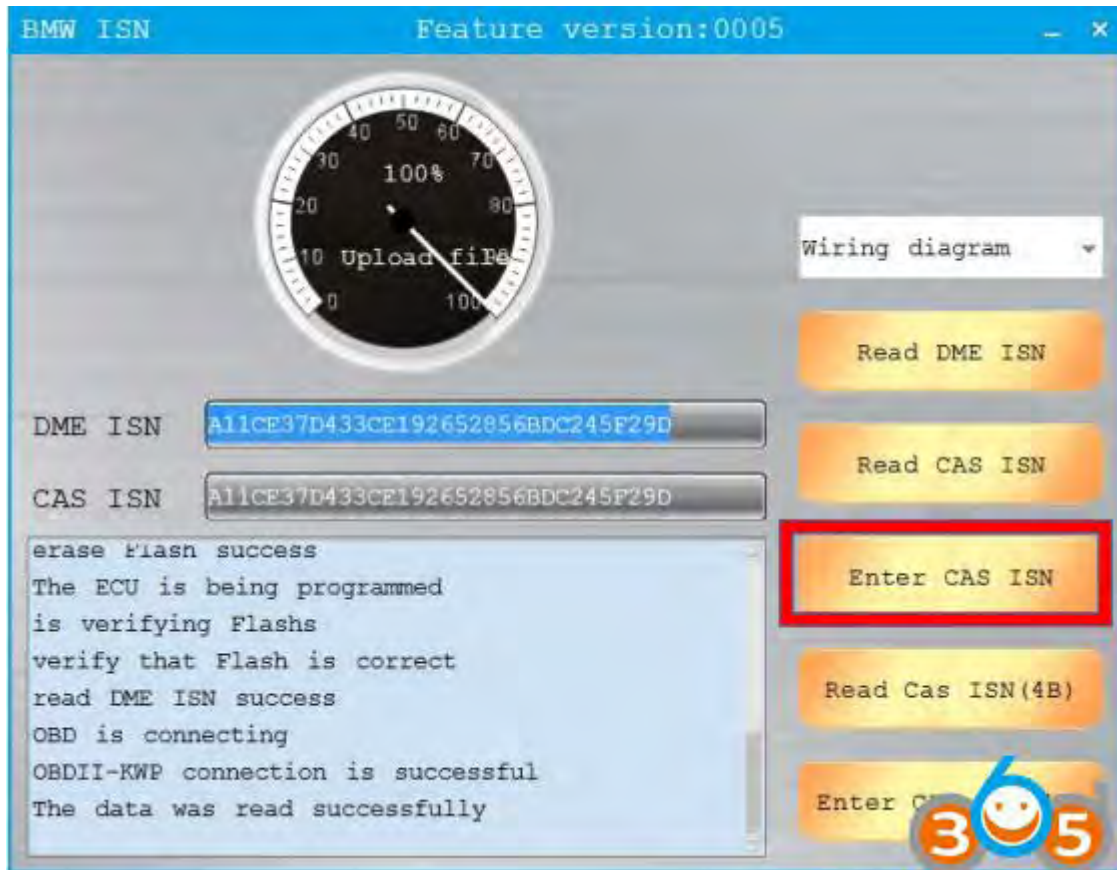


[CGDI BMW](#) Read DME ISN successfully

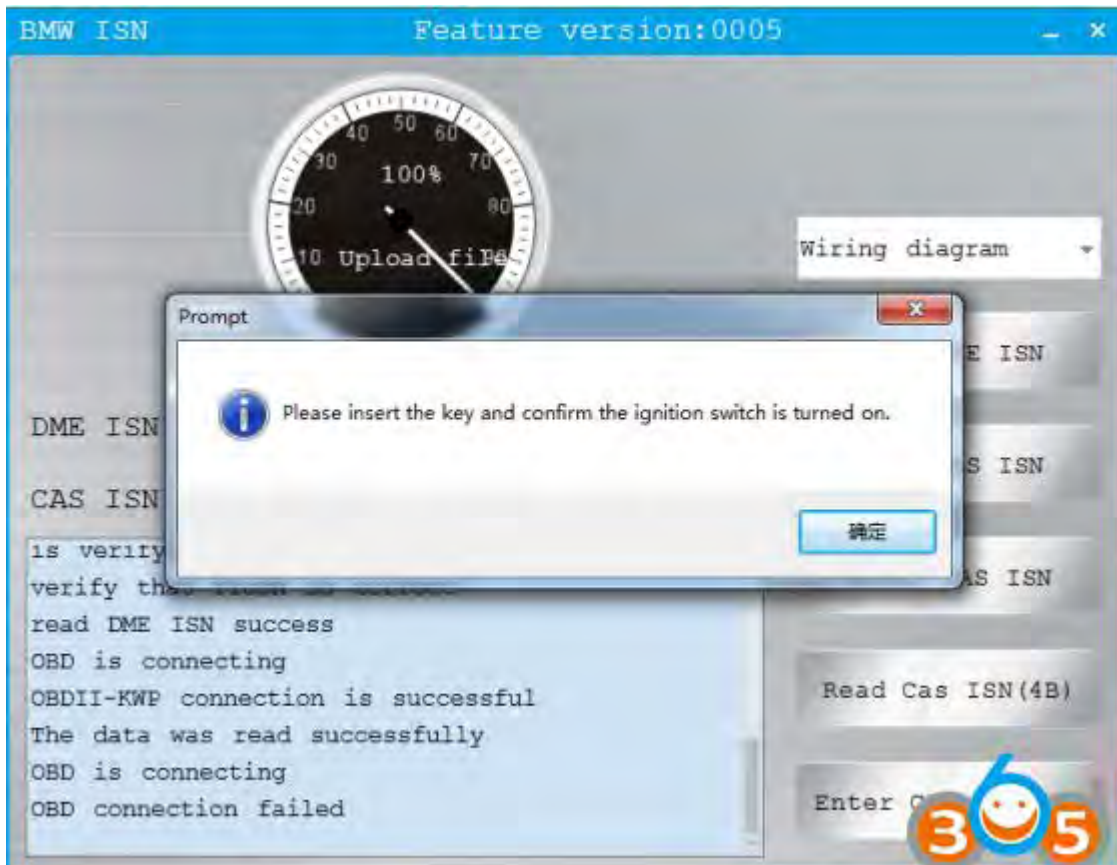


Read the CAS ISN

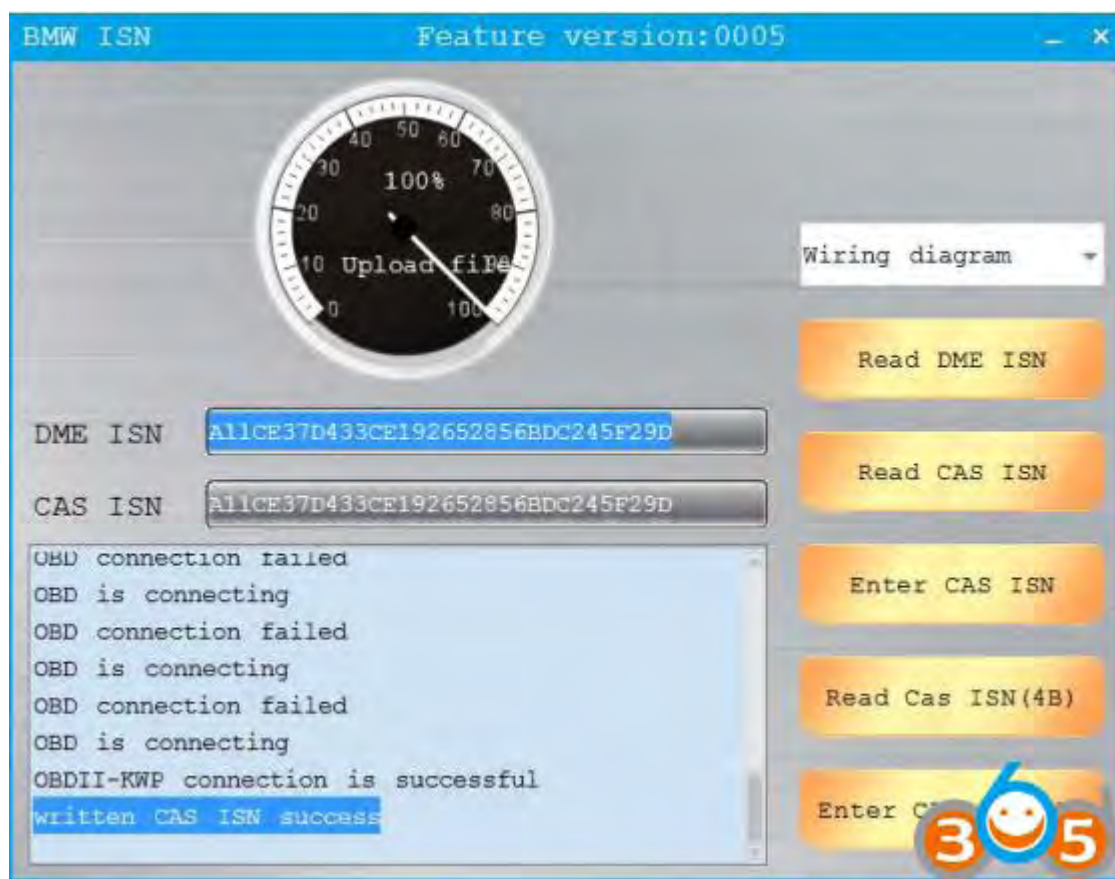
CAS ISN read successfully



Copy the DME ISN to the position of CAS ISN and write it



Please insert the key and confirm the ignition switch is turned on



Written CAS ISN success

www.obdii365.com