

How to: change replace the BMW CAS3 N20 Engine Computer using [CGDI Prog BMW key programmer](#).

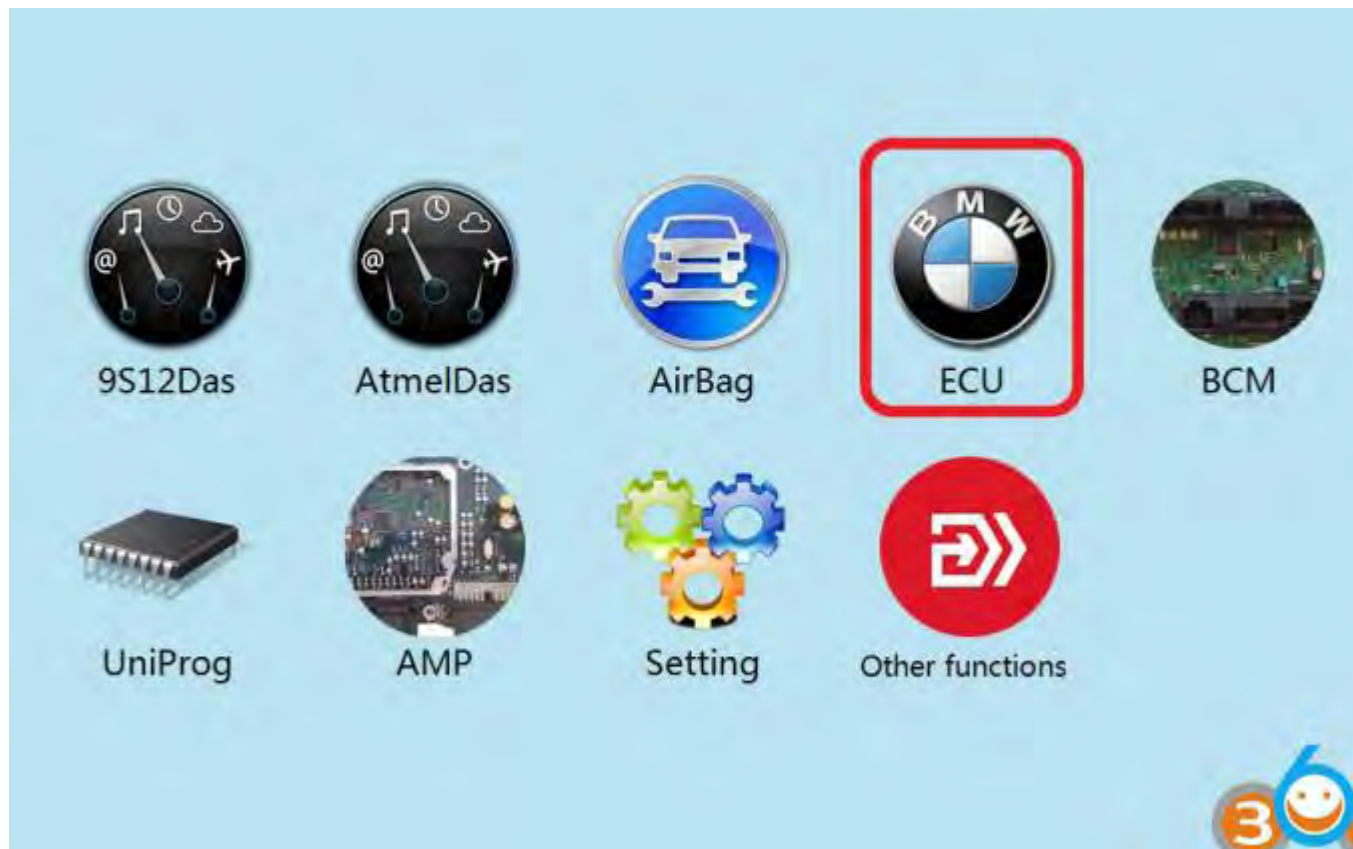
**When is required:**

A secondhand/used N20 ecu was to used to replace the original N20 engine computer.

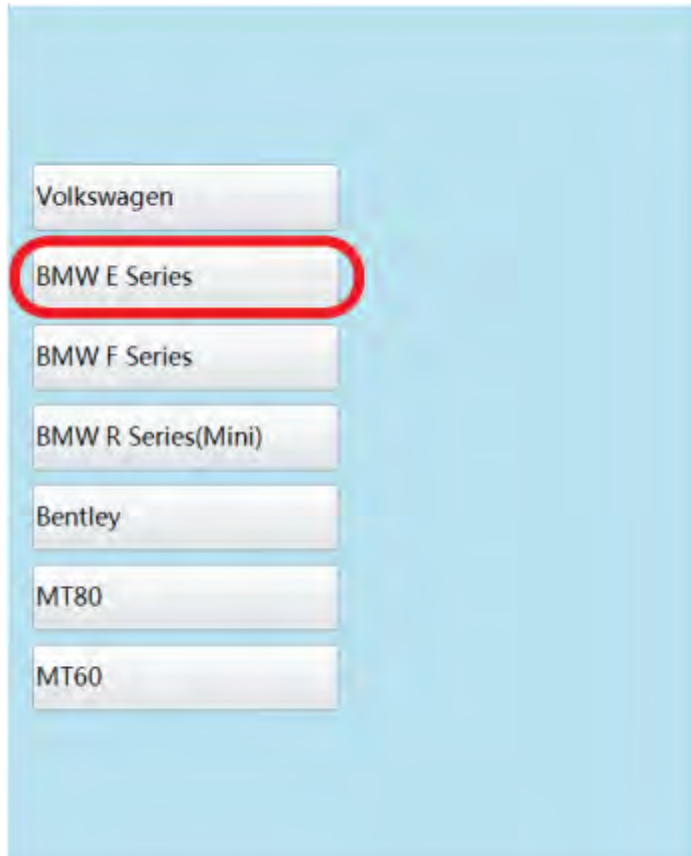
**Procedure:**

Read engine ECU data with [CG100 Prog](#)

Note: Only CG-100 full-featured can do this.



Click to enter "ECU"



Click on the engine model option to enter the current vehicle

ISN:

VIN:

Please use the new adapter

Fullscreen    Ret

Read EEPROM

Write EEPROM

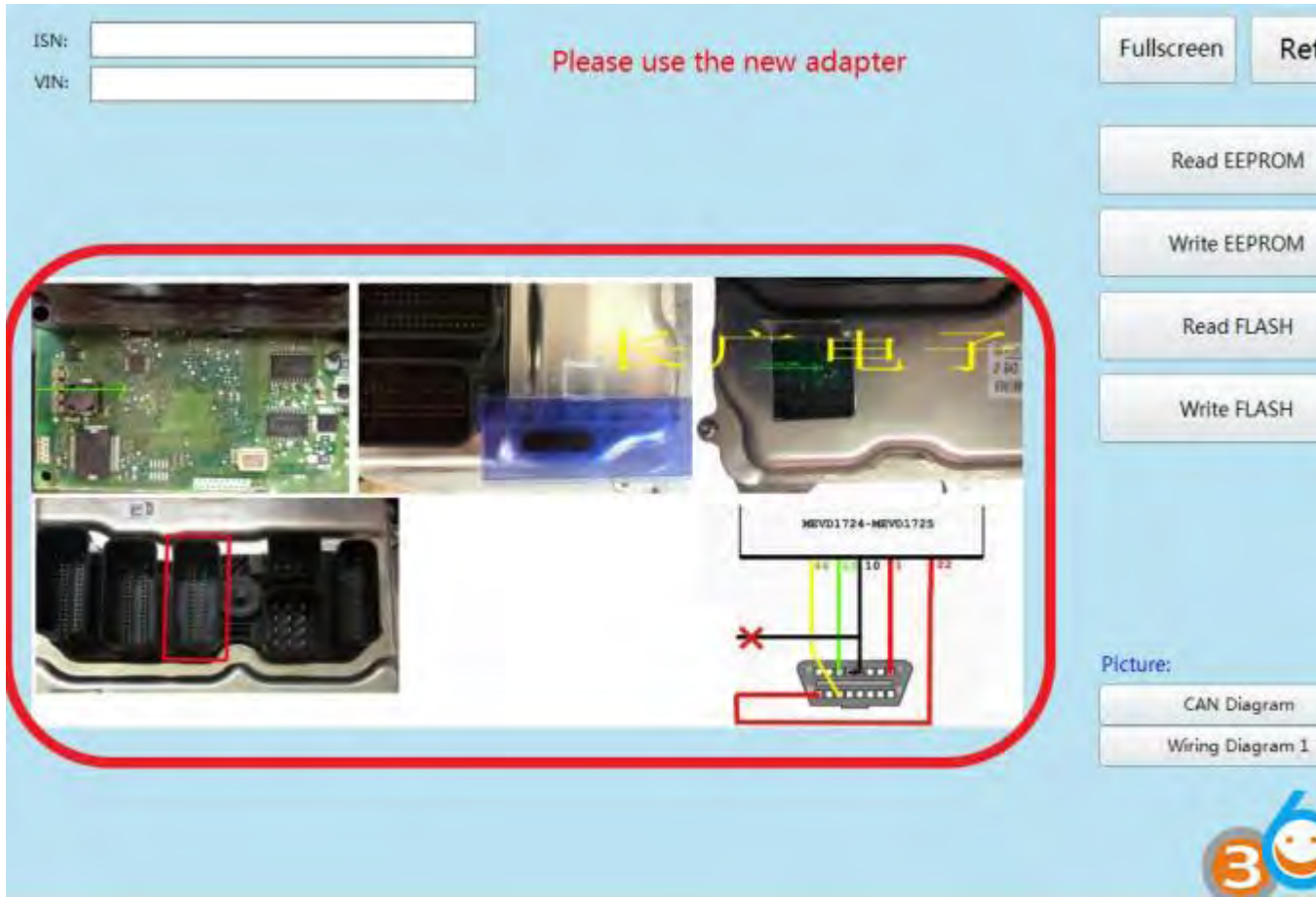
Read FLASH

Write FLASH

Picture:

CAN Diagram

Wiring Diagram 1



The screenshot shows a diagnostic software interface. At the top left, there are input fields for 'ISN:' and 'VIN:'. A red text prompt 'Please use the new adapter' is centered. On the right, there are buttons for 'Fullscreen', 'Ret', 'Read EEPROM', 'Write EEPROM', 'Read FLASH', and 'Write FLASH'. Below these is a 'Picture:' section with buttons for 'CAN Diagram' and 'Wiring Diagram 1'. A large red-bordered area in the center contains four images: a green PCB, a blue adapter, a car interior with a yellow watermark '长广电子', and a wiring diagram. The wiring diagram shows a connector labeled 'MEVD1724-MEVD1725' with pins 1, 10, 11, and 12. Pin 11 is connected to a green wire, pin 10 to a yellow wire, and pin 12 to a red wire. A red 'X' is marked on a black wire connected to pin 1. A red box highlights a component in the car interior photo.

According to the software physical wiring diagram wiring



Engine module wiring

ISN:

VIN:

Please use the new adapter

Fullscreen

Read E

Write E

Read

Write

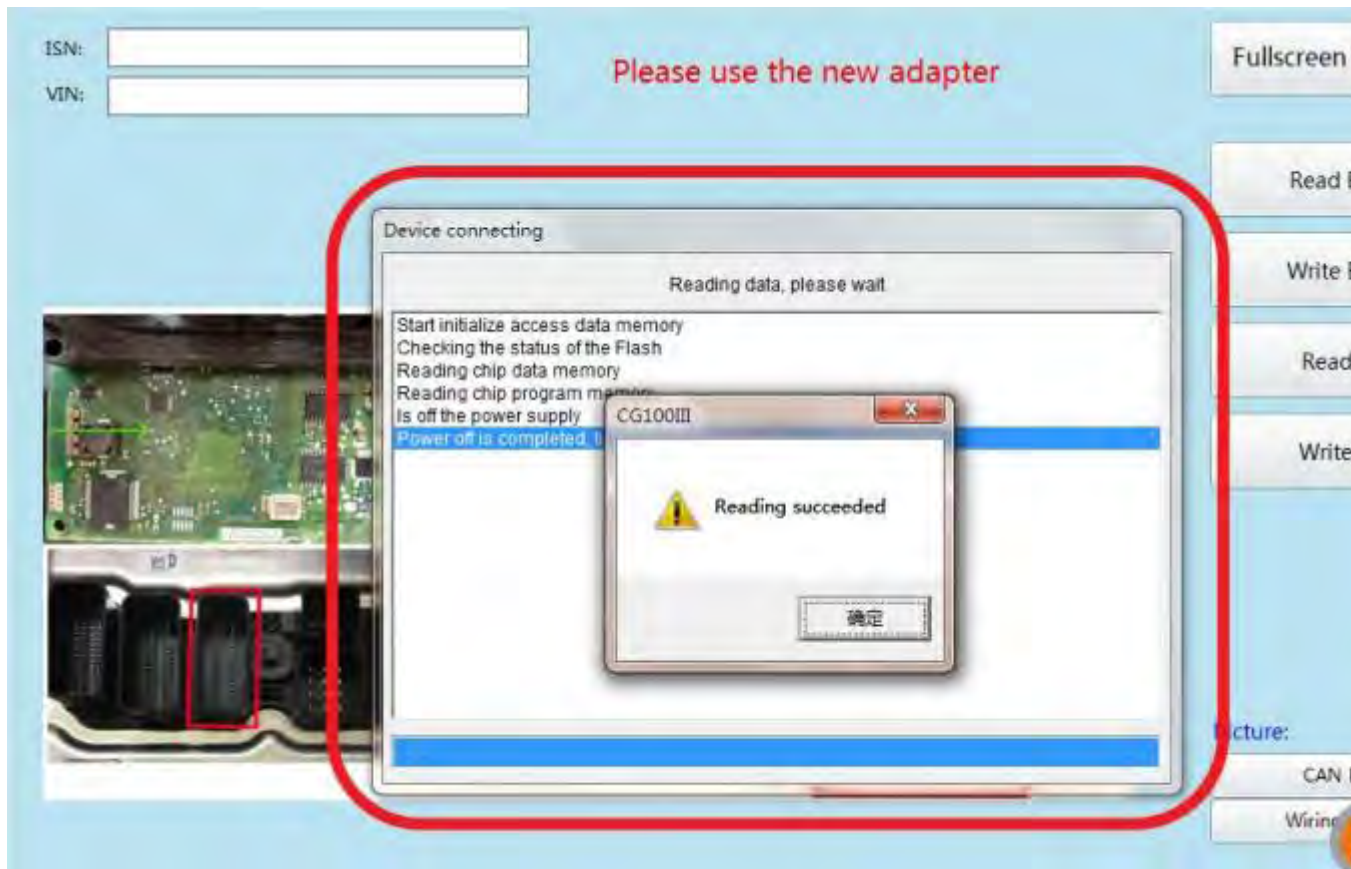
Picture:

CAN D

Wirin



Click 'Read EEPROM'



Read successfully and save the data

ISN: 8E76BEDF12DEC25BE3A47A4AEFE254C6  
VIN: SCBFN63W1EC094039

Please use the new adapter

Fullscreen

Read EEPROM

Write EEPROM

Read Flash

Write Flash

Picture:

CAN Diagnostic

Wiring Diagram

3

Show ISN and VIN

Connect CGDI BMW with vehicle via OBD socket through main cable



BMW OBD Key Match



CAS3 Key Match



BMW



FEM/BDC Key Match



CAS4 Key Match



BMW Enable/Di



BMW F Series Program



BMW F Series Coding



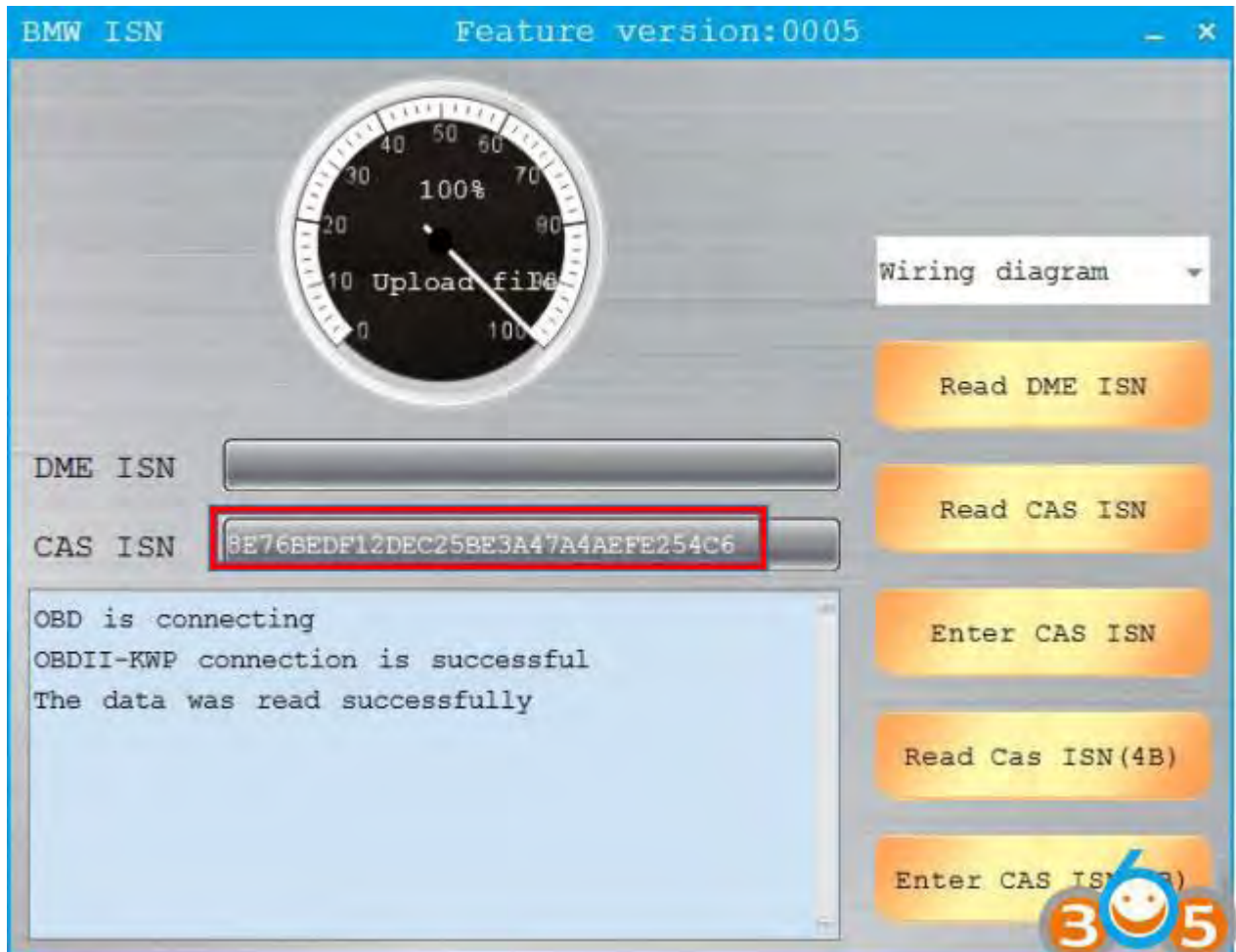
EGS

Select BMW ISN

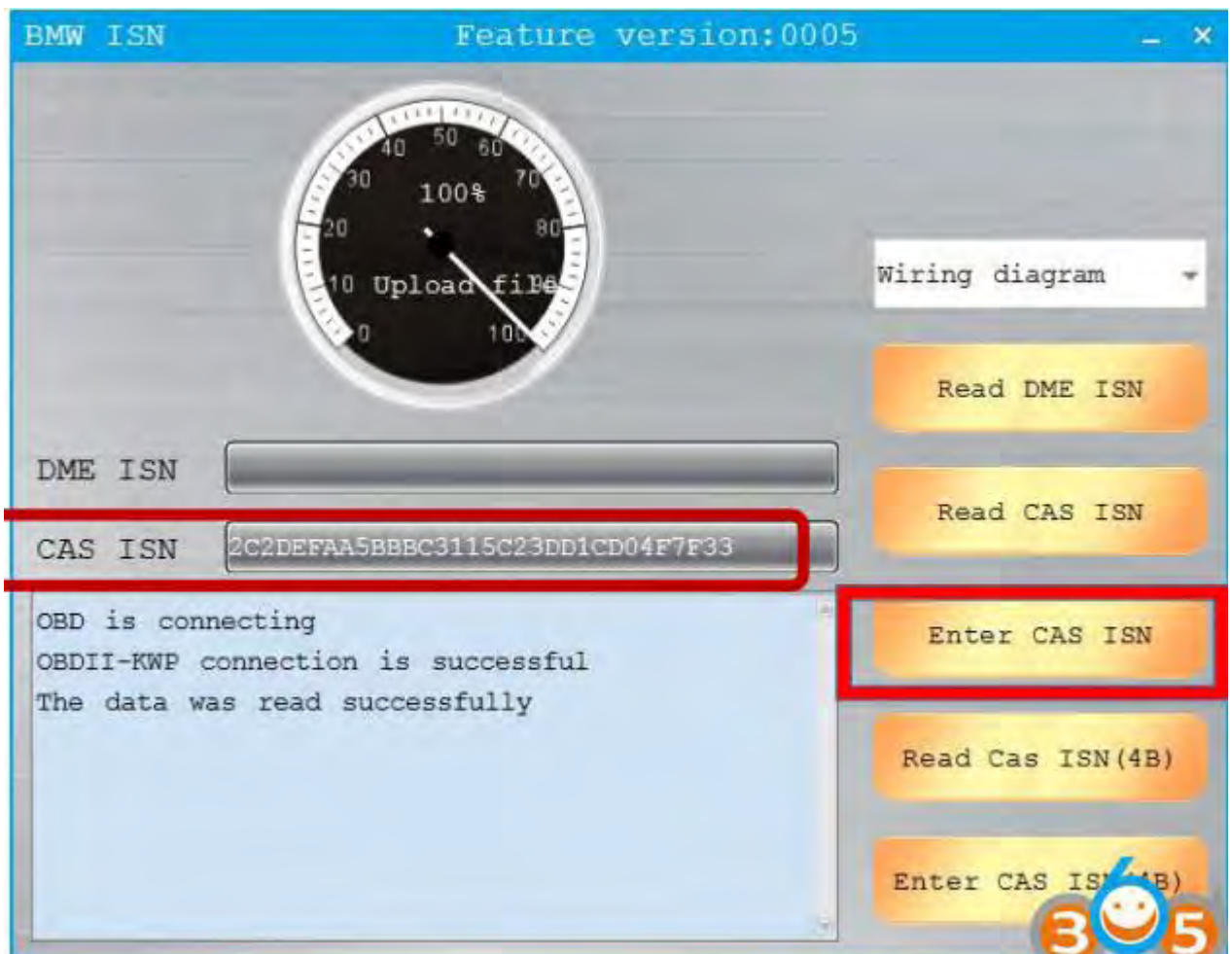


Click "Read CAS ISN"

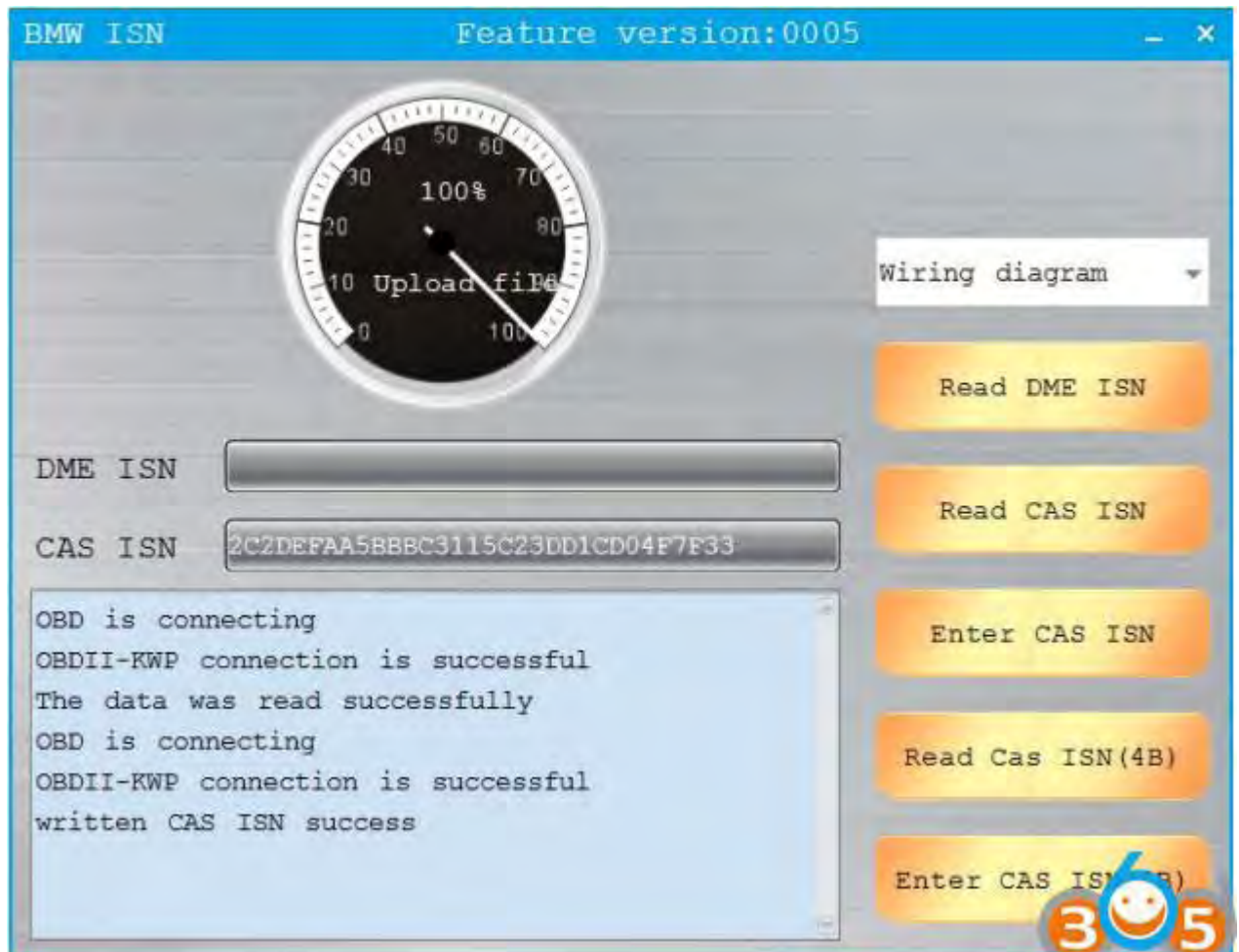




CAS ISN read successfully



Input ISN which read through [CG100](#)



Write successfully, replace engine computer was completed.

[www.obdii365.com](http://www.obdii365.com)