

Software update Instructions

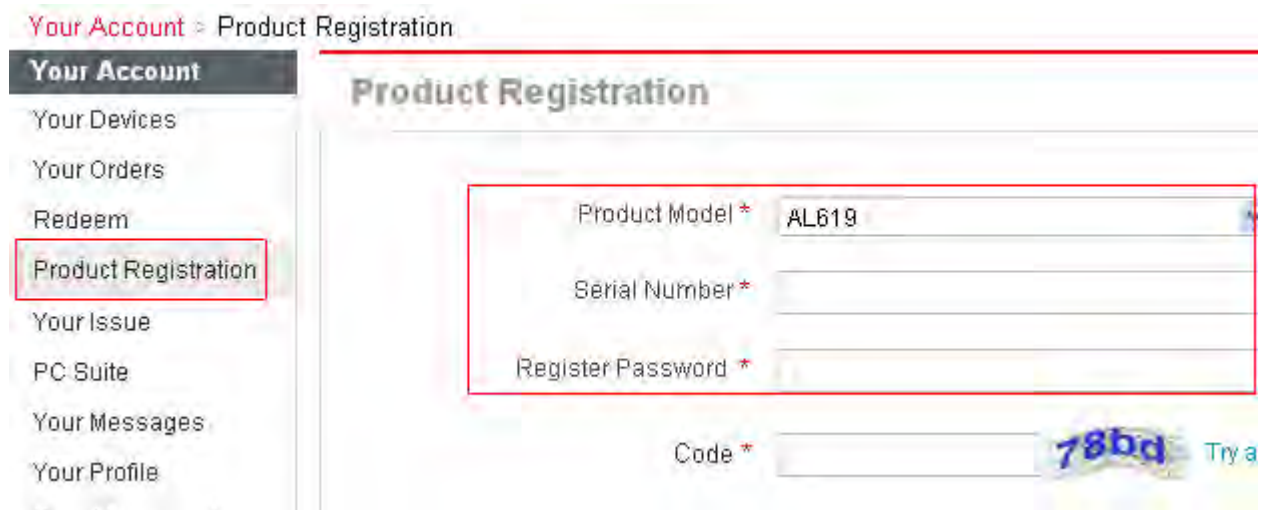
(Suitable for MaxiDiag Elite, MaxiCheck ,TS501, TS601, AL609, AL619, EBS301,OLS301, VAG505, MOT PRO)

Register the Tool:

Please go to our website www.autel.com to register an Autel ID.

Then sign in our website with your Autel ID and password to register your tool: <http://pro.auteltech.com/>

Your Account > Product Registration



Your Account


- Your Devices
- Your Orders
- Redeem
- Product Registration**
- Your Issue
- PC Suite
- Your Messages
- Your Profile

Product Registration

Product Model * AL619

Serial Number *

Register Password *

Code *  Try a

Note: when registering the tool on our website, please make sure that the serial number and register password that you input are correct. On the tool itself, you can press on **Setup->About** to double check the serial number and register password. If you only have the S/N, please contact our technical support to check out the register password.

Update via Computer:

1. Log in our website with your Autel ID and password, and then download the latest PC Suite for your tool from your account.

<http://pro.auteltech.com/>

Your Account	PC Suite					
Your Devices	Software	Products	Latest Version	Release Date	Language	Operation
Your Orders	Autel PC Suite	MaxiCheck AbsSrs, MaxiCheck DP...	V6.31	12/13/2013	English	Download
Redeem	PC Suit	Mot Pro	V6.33	12/13/2013	English	Download
Product Registration	Master Pro PC Suit	Master Pro	V6.33	12/13/2013	English	Download
Your Issue	VHC011 PC Suit	VHC011	V6.31	11/15/2013	English	Download
PC Suite	MaxiSYS PC Suite	MaxiSYS, MaxiSYS Mini, MaxiSYS...	V2.02	11/01/2013	English	Download
Your Messages	PC Suite	MaxiDAS DS708	V6.31	10/30/2013	English	Download
Your Profile						
Reset Password						
Payment Instructions						

2. Then please install the PC Suite on a Windows computer that can get Internet access.

3. Insert the SD card to USB port of the computer via a SD card reader, run the PC Suit, then input your Autel ID and password to log in our system. If you forget your password unintentionally, you may always click the [Forget Password?] to link to our website and reset your password.



Update V6.31

Account:

Password:

[Forget Password?](#) [Register](#)

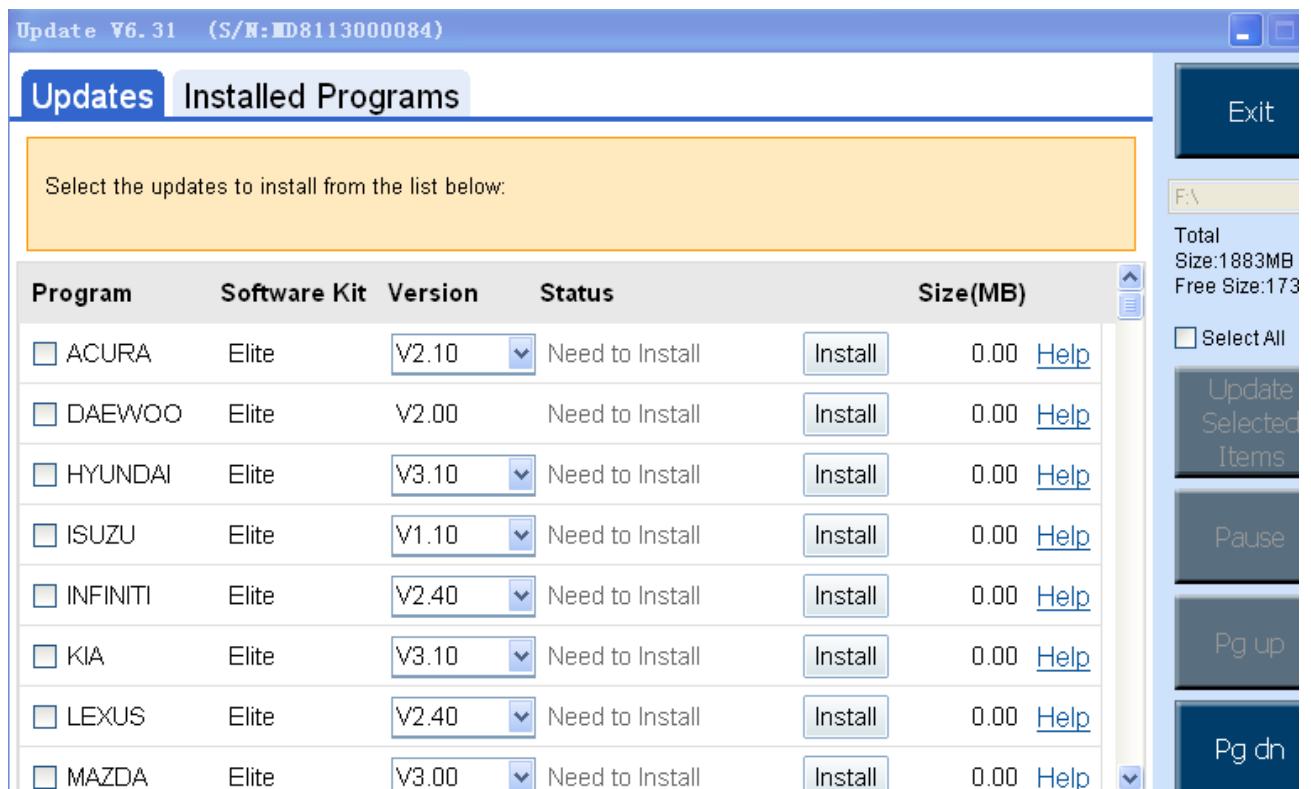
Remember Password

[Login](#)

4. Then wait for the Update window to display.

You can use the pull-down menu on the right corner to select the correct SD card if two or more SD cards have been connected to the PC. And you can click on the Install button to download the software updates.

To ensure the good performance of the scan tool, it is recommended to download and install all the software updates.



6. After downloading all the software, please insert the SD card back to the tool; then you can enjoy the new software.