

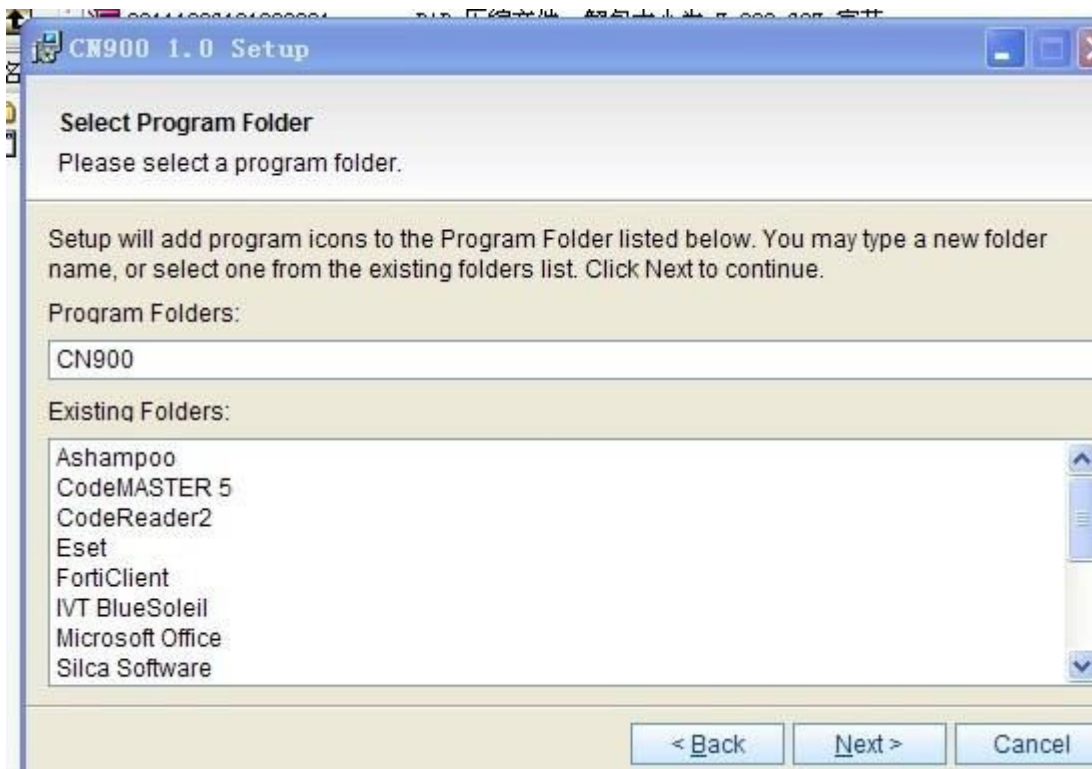
22.CN900 机器安装软件过程与功能
22.CN900 install software and function.

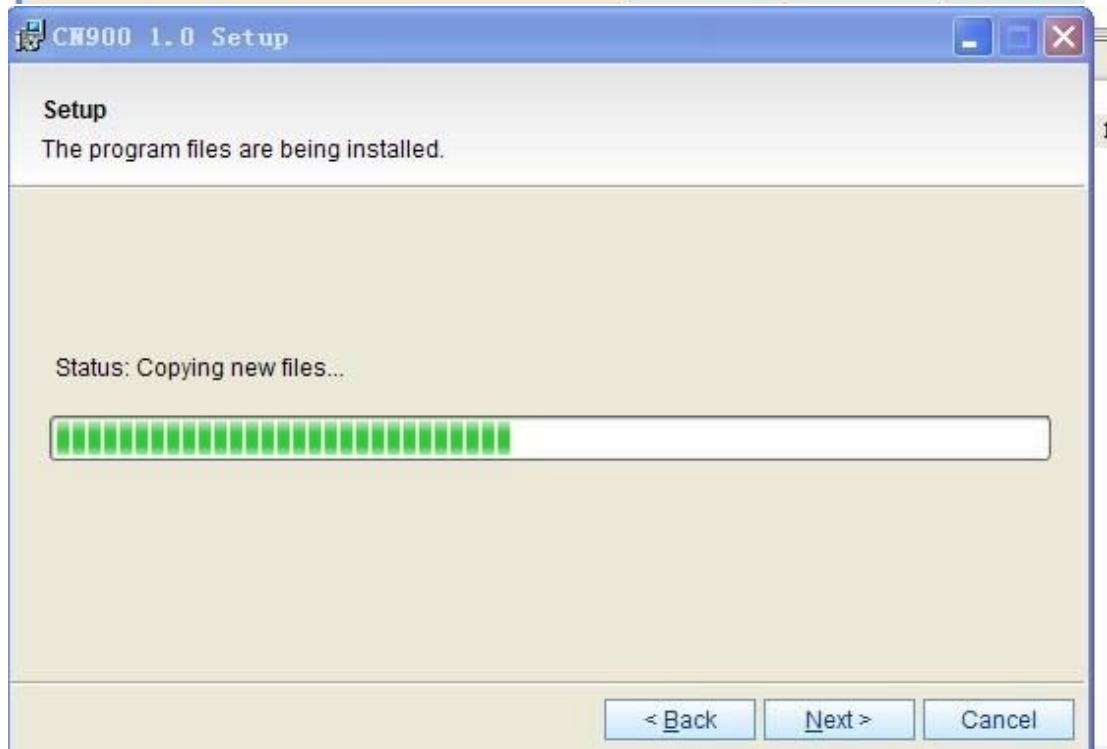
The screenshot shows a web browser window with the address bar containing `http://www.cn900.net/down/`. The website header features the logo **CN900.NET** and a navigation menu with links for Home Page, Product, News, Download, and Video. The main content area is titled **Relevant Download** and lists a download item: **Software, Manual** (Type) with the filename **CN900 Software**. Below this, there is a **Download** button.

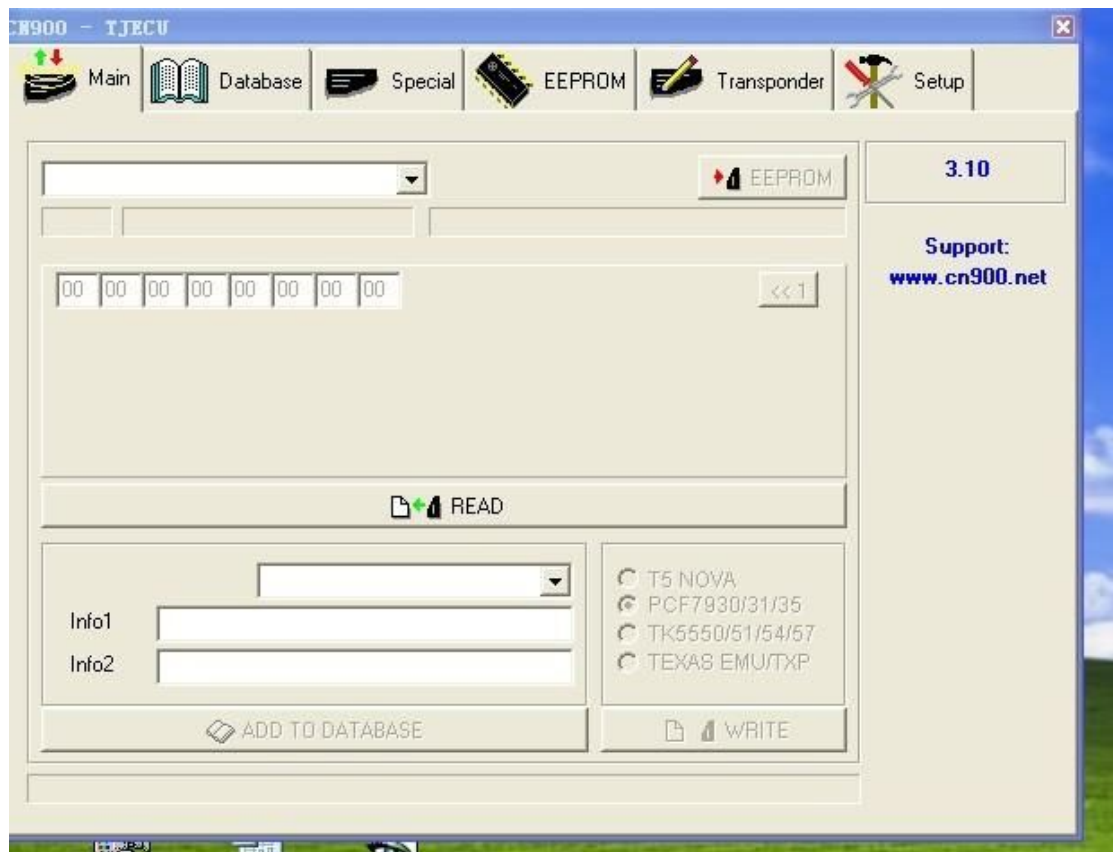
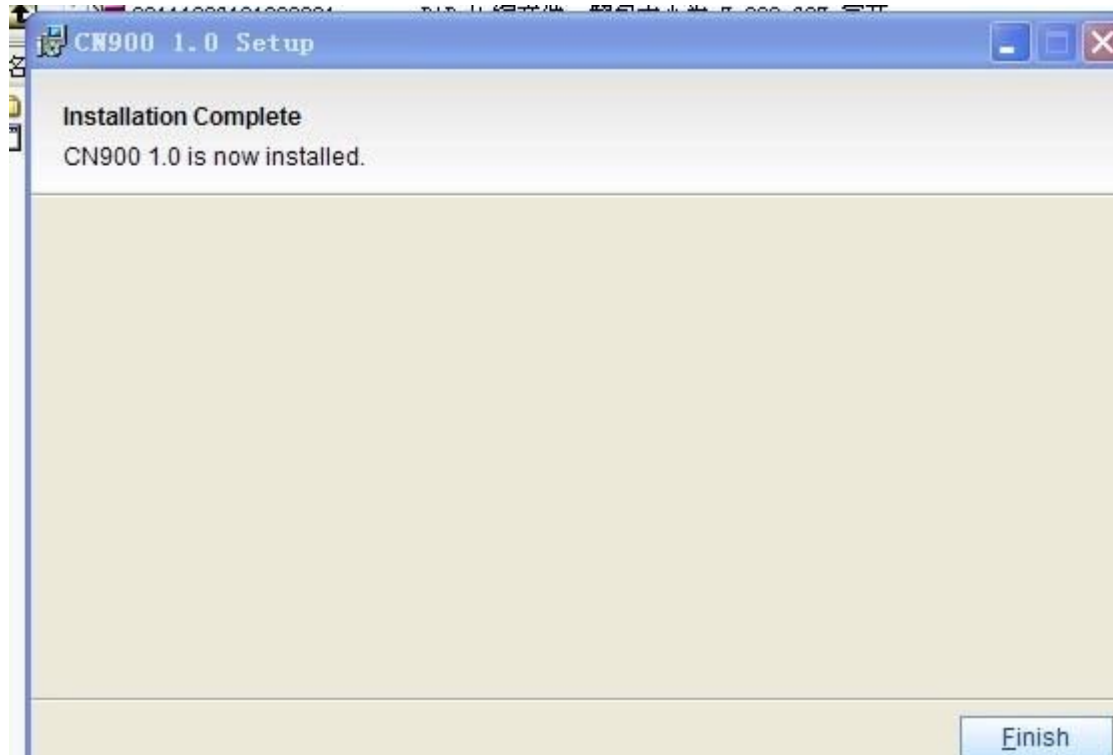
A file dialog box is open, asking "您想打开或保存此文件吗?" (Do you want to open or save this file?). The file details are:
名称: 20111206191900001.rar
类型: WinRAR 压缩文件, 7.09 MB
发送者: www.cn900.net
Buttons: 打开(O), 保存(S), 取消

Below the dialog, a progress window shows the file is being saved. The text reads: "正在保存: 20111206191900001.rar 来自 www.cn900.net". A progress bar is shown with a green fill. The estimated remaining time is 3 seconds (5.84 MB copied, 7.09 MB total). The download path is `C:\Documen... \20111206191900001.rar` and the transfer speed is 393 KB/秒.

At the bottom, a taskbar shows the file **CN900.exe** with a size of 7,823,697 bytes and a date of 2011-12-6 1... The file type is listed as 应用程序 (Application) with a hash of CDD2F5BE.







COM

Language

COM

Language

CONNECT

rel

S/N

S/N2

Additional modules

1. Renault Laguna II
2. Iveco
3. Renault Megane

CH900 - TJECU

Main Database Special EEPROM Transponder Setup

63 Texas CRYPTO EEPROM 3.10

03 00 07 65 44 01 00 00 00 00 00

ID1: E88692
ID2: DBE92F

READ

Info1
Info2

T5 NOVA
 PCF7930/31/35
 TK5550/51/54/57
 TEXAS EMU/TXP

ADD TO DATABASE **WRITE**

OK

Support: www.cn900.net

HTAG2

Configuration

PSW: 4D 49 4E 52
4F 4E

Factory

Mode

Password mode
 Crypto mode

Transponder

PCF7936
 PCF7942/44
 PCF7943
 PCF7946

Detect

	31	bits	0	TM	
0	00	00	00	00	SN/IDE
1	00	00	00	00	Crypto/ISK Lo
2	00	00	00	00	Crypto/ISK Hi
3	00	00	00	00	TMCF/PSW
4	00	00	00	00	User 0
5	00	00	00	00	User 1
6	00	00	00	00	User 2
7	00	00	00	00	User 3
4	00	00	00	00	RSK Lo
5	00	00	00	00	RSK Hi
6	00	00	00	00	RCF
7	00	00	00	00	SYNC

IDE

1 1

2 2

3 3

4 4

5 5

6 6

7 7

0-7

4 4

5 5

6 6

7 7

Save TM Load TM Load config Load TM + config

Transponder Setup

H900 - TJECU

Main Database Special EEPROM Transponder Setup

1. Opel IMMO2 Siemens [TP]

TMS370C702 256 bytes
Opel
ID: 40
Transponder type: PCF7935 precoded
Transponder is ready programmed to start the vehicle

DUMP

Format
 8 bit 16 bit

Open file View file

PROGRAM TRANSPONDER

CALCULATE PIN

Transponder PIN

