

# Ghost Windows Xp Professional SP3

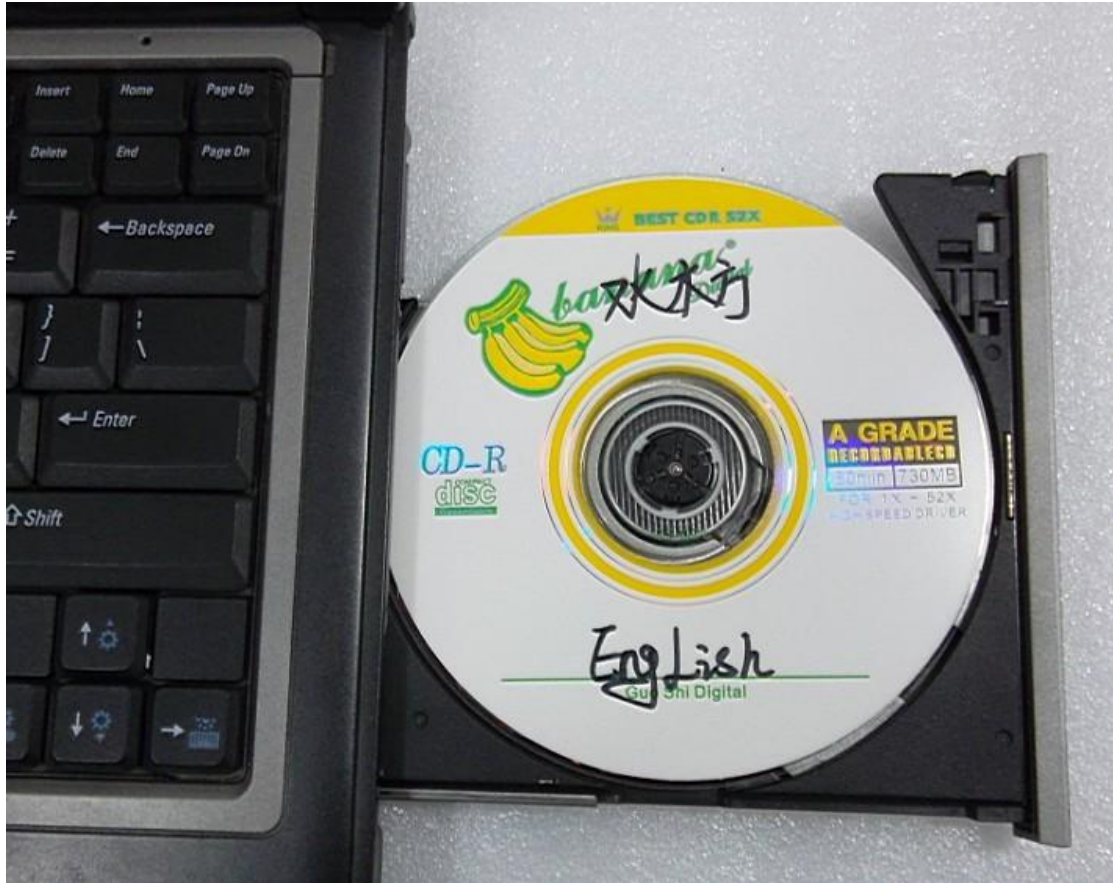
How to step-by-step install **Ghost Windows Xp Professional SP3**.

Step 1: Download the compressed file " [Ghost Windows Xp Professional Sp3 Free Download.zip](#)"

Step 2: Uncompress it

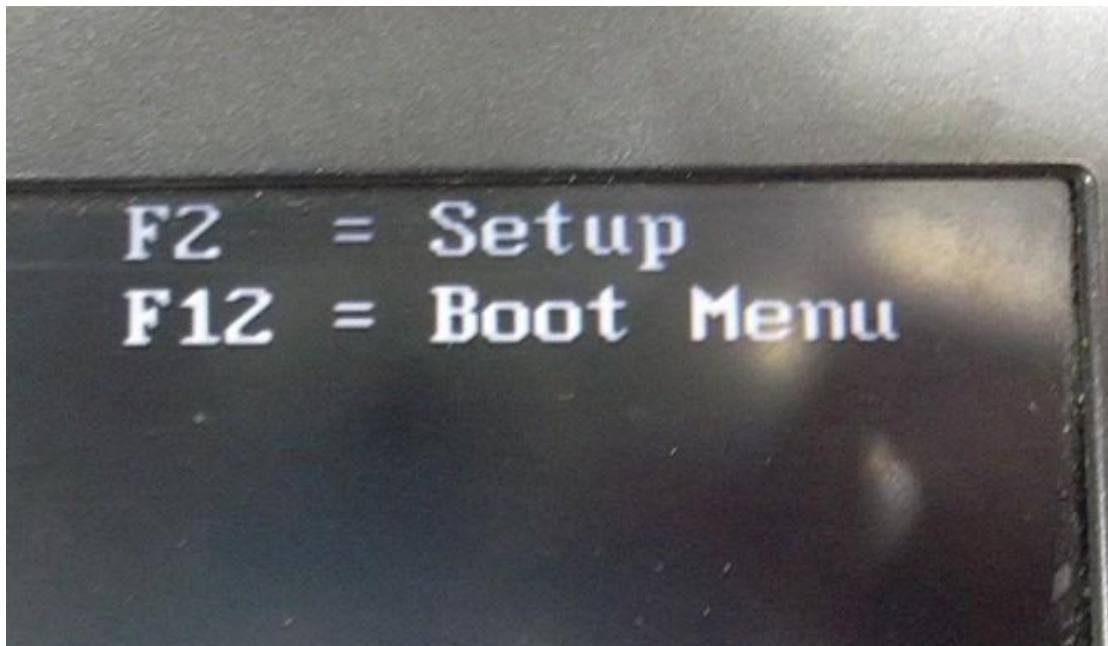
Step 3: Record the ISO file into the CD.

Step 4: Insert CD into CD-ROM

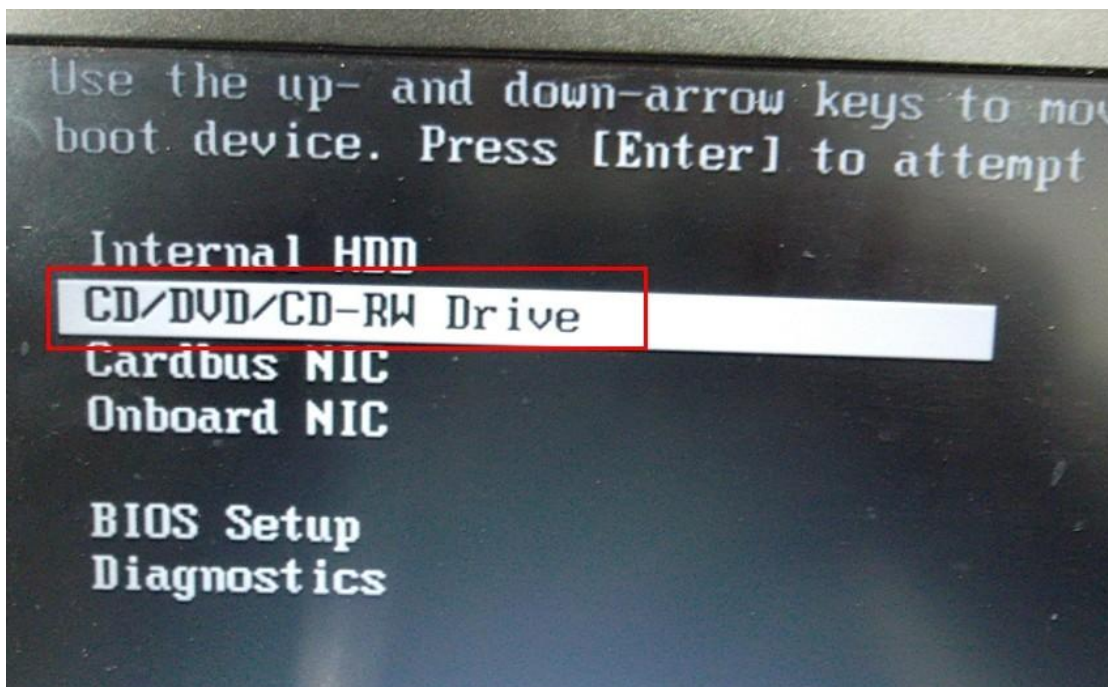


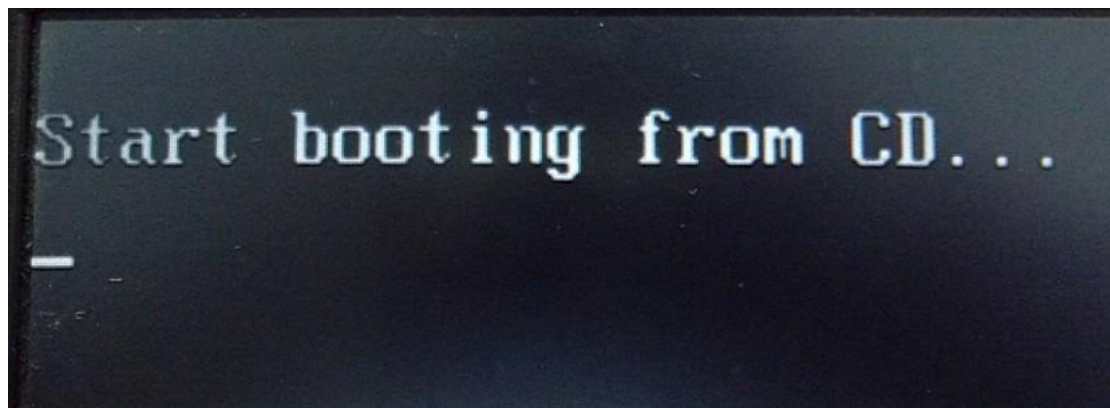
Step 5: press the POWER button to turn on the computer





Step 6: press F12 key, the computer enter into setup menu,  
Start booting from DVD.





Step 7: choose the option " A: setup ghost xp3 English on C: drive."



Step 8: the system starts to automatically install as the following shows.

```
UIDE, 01-15-2008.      80-MB Cache, CD/DVD name
IDE1 Controller at I-O address 6FA0h, Chip I.D.
IDE2 Controller at I-O address 6EE0h, Chip I.D.
IDE2 Primary-master disk is TOSHIBA MK1652GSX,
CD0: IDE1 Primary-master, TEAC DVD-ROM DV28EV,
CDROM=1
CDROM1=F:
_
```

Symantec Ghost 11.5 Copyright (C) 1998-2008 Symantec Corporation. All rights reserved.


Progress Indicator

0% 25% 50% 75% 100%

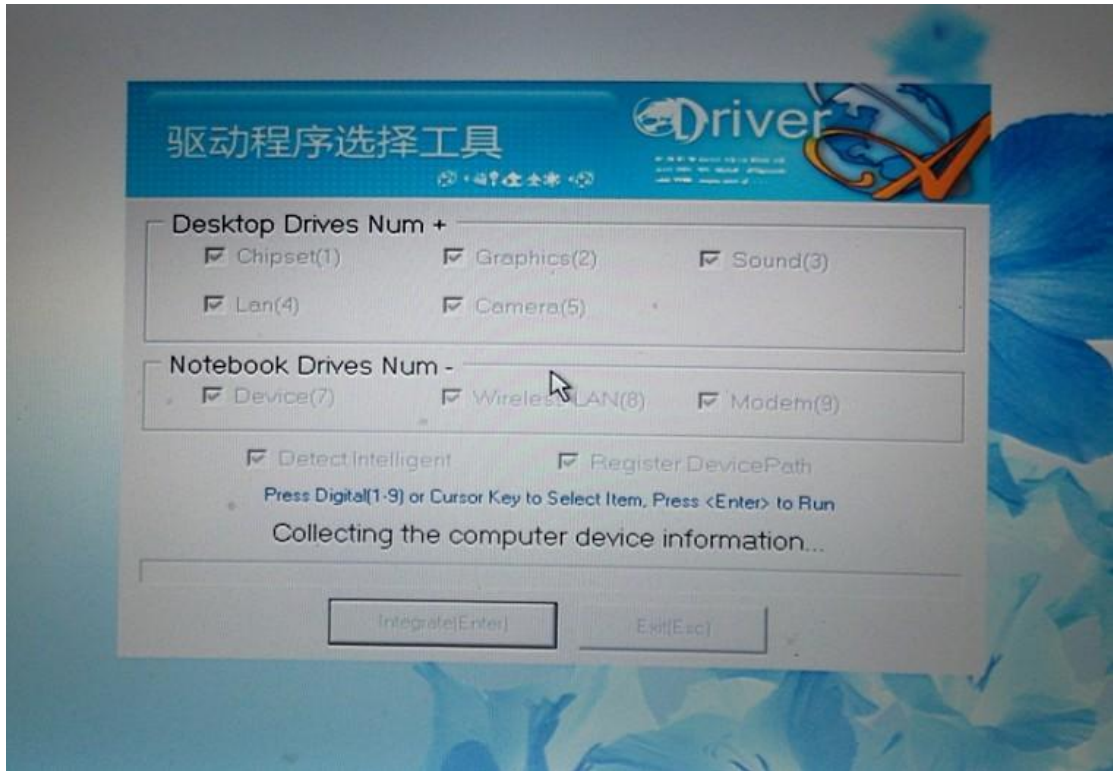
Statistics	
Percent complete	9
Speed (MB/min)	222
MB copied	100
MB remaining	939
Time elapsed	0:27
Time remaining	4:13

Details

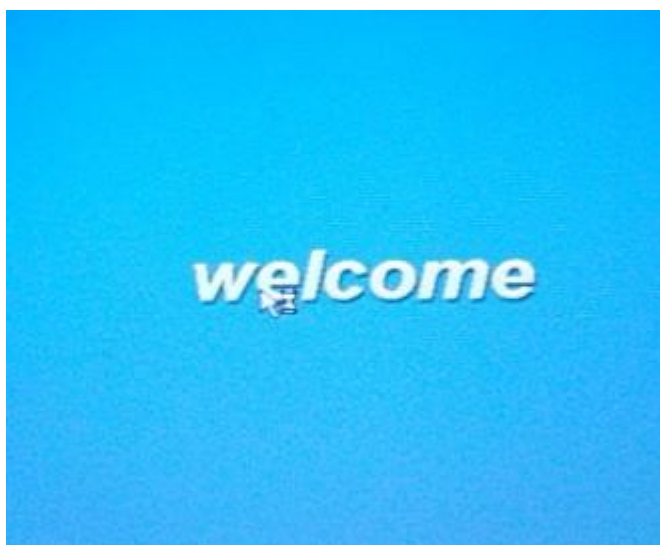
Connection type	Local
Source Partition	Type: b [Fat32], 5004 MB, 1039 MB used, NO NAME from Local file E:\XPX3D.GHO, 38154 MB
Target Partition	Type: c [Fat32], 52226 MB from Local drive [1], 152627 MB
Current file	\\WINDOWS\SYSTEM32\HUI\0415\XP0B2RES.DLL

 symantec.

Step 9: after the computer reboots, it will start the driver configuration.



Step 10: the computer reboots.

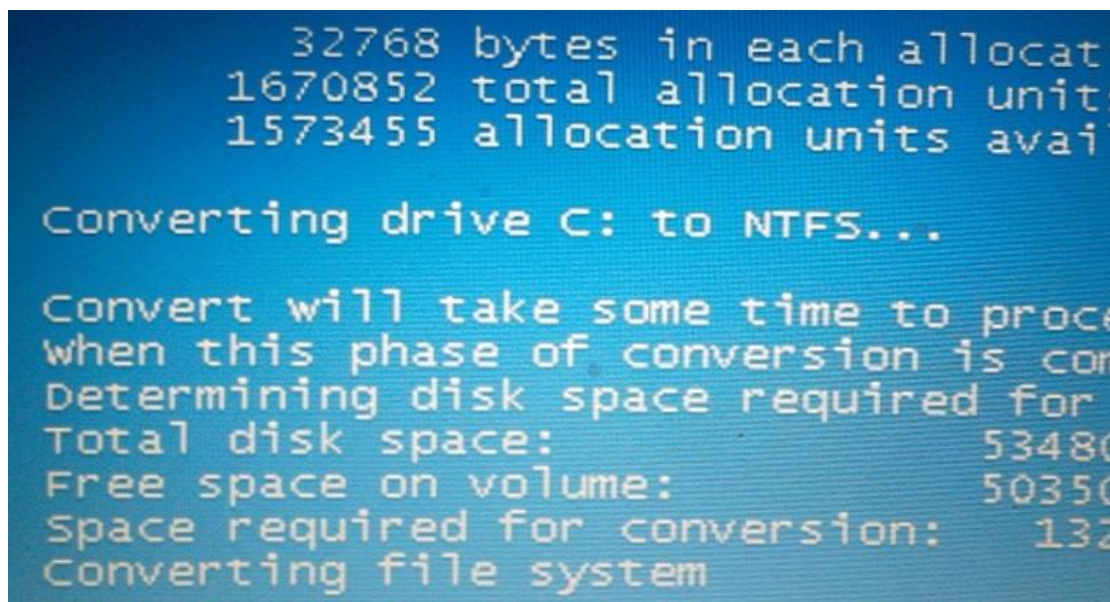


Step 11: after the system setup succeeds; one dialogue box appears and named "Conver NTFS", the content is "soon restart and convert the system CD into NTFS format?" Click "Yes" to

confirm.

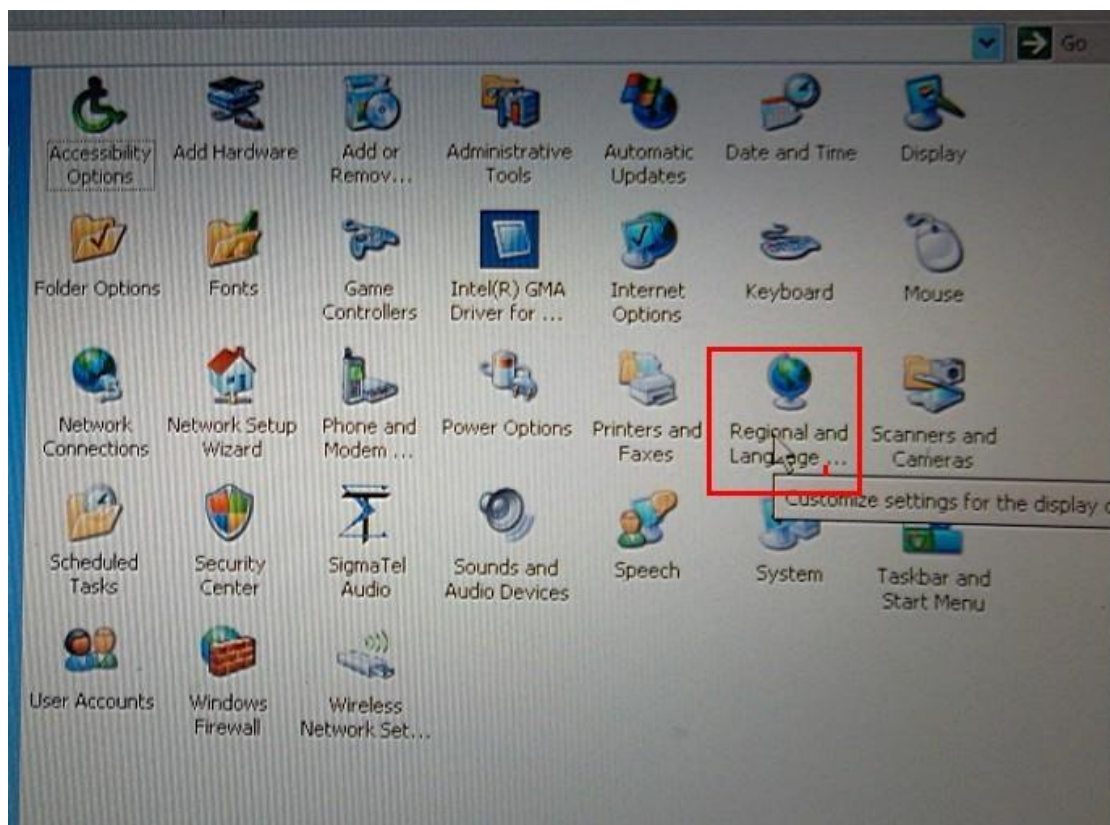


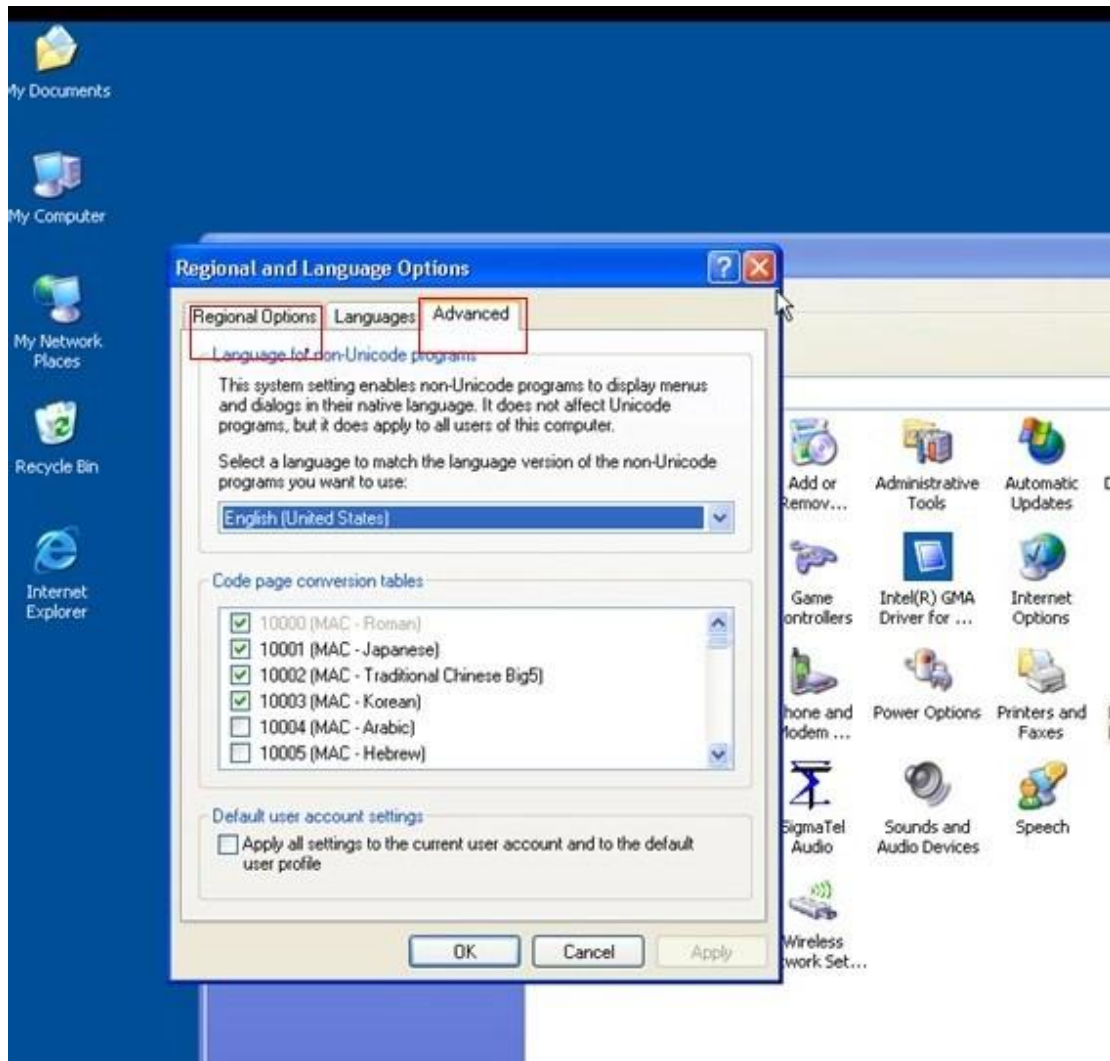
Step 12: NTFS conversion is ongoing.



Step 13: change the system language to English (United States) as the following shows.







(Both "Regional Options" and "Advanced" Language need to reset as English (United States))

### Notes:

- 1) If your computer failed to install Ghost Windows Xp Professional Sp3, try another one computer, advice you better use Dell D630.
- 2) About 80% of our supplied products need to run with Ghost Windows Xp Professional Sp3, like FGTECH.