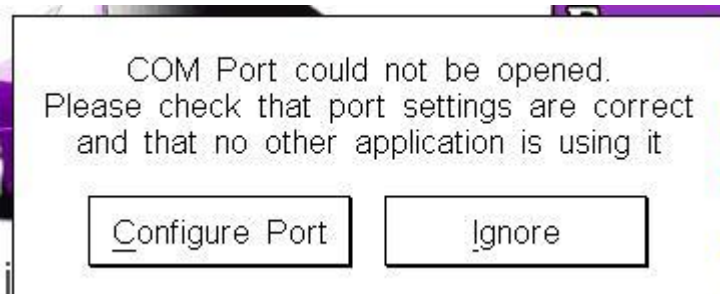

ELM327 english manual

1. Plz until you connect the ELM327 with the car, then put the USB interface of ELM327 into the laptop.
2. Connect the 16 pin connector of ELM327 with the car's 16 pin connector.
3. Start the laptop and connect the USB of ELM327 to the laptop.
4. Install the software, put the cd into the laptop and begin install it. After proper install, you will saw an icon of scan tool.
5. Turn the car's ignition on.
6. start the power of the car, you can see the light shining, it means the connect has succeed.
7. Click "my computer" begin the set of characteristic. Click the right button of your mouse, choose "characteristic".
8. At the "hardware", pls choose "Device Manager", to set the comport. At the "USB Serial por" click the right button of mouse, choose "characteristic", choose "comport set up" choose "baud rate to 9600. In the comport set up, choose "advanced", you can choose from comport 1 to comport 8.anyone is ok, and then click enter. The set up of computer is complete.
9. Double click the icon of "Scan Tool" on the desktop, click "Sensor





10. you will see a window not, pls choose “ignore”



11. in the option, pls choose the same comport as previous setting. Choose the baud rate to 38400 and save it. Then you can read the data.