

EMULATOR IMMO

OPEL

**ECM 1,2 -1,4 gasoline with two black plugs
and processor Motorola HC11E20.
ECM 2,0 and 2,2 gasoline with memory
eeprom 24c02**

Thank you for purchasing our device.

**Emulator immo to Opel cars replaces damaged
immobilizer or the car key.**

**It function after made changes in memory content of
Engine Control Module ECM.**

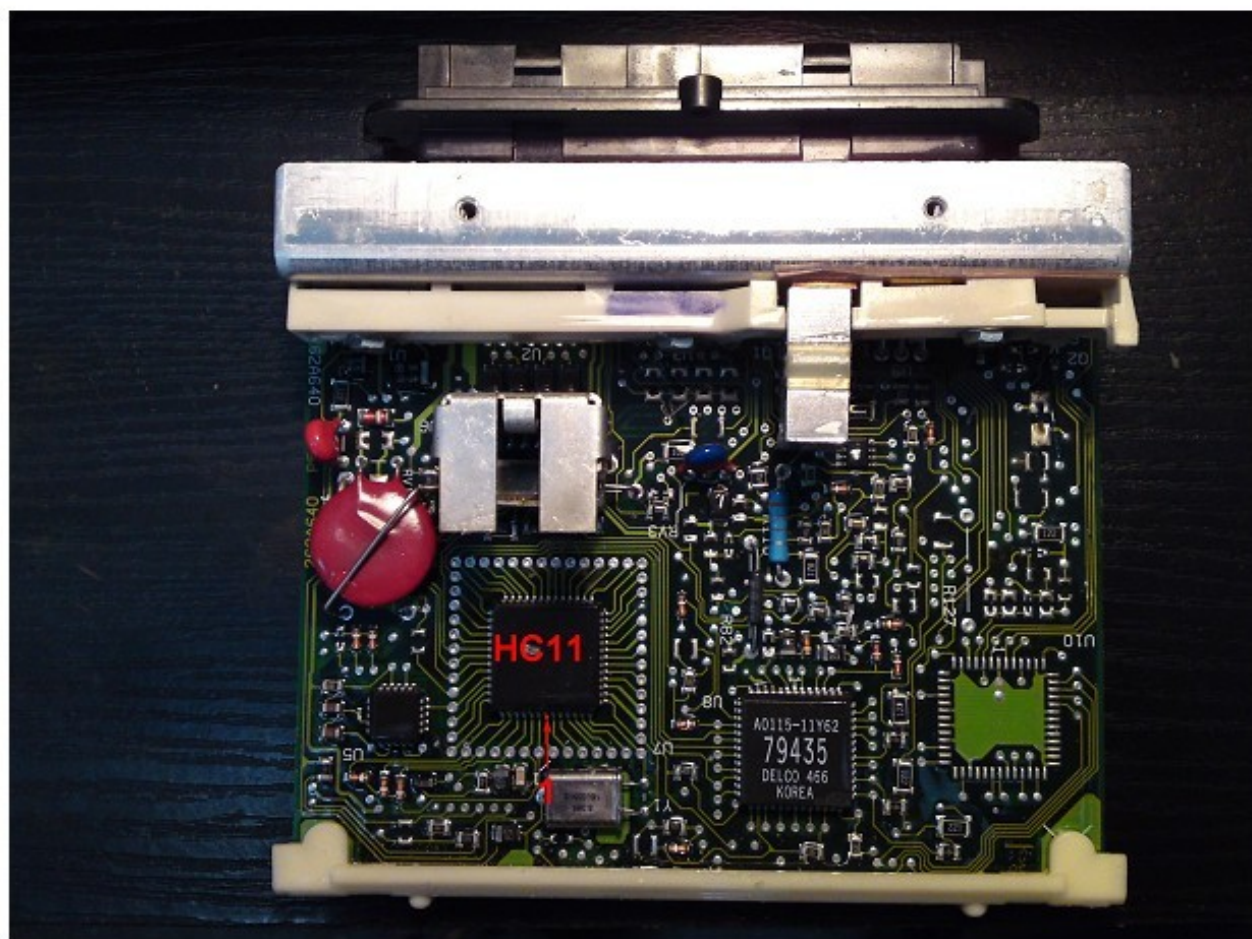
**In case of losing the car keys or a car burglary, it
enable to drive off from the road to the car service.
Due to a low cost you can leave it in the car instead of
buying a new immo or making car keys duplicate.
There is a possibility of using it as the additional
security!**

Two LEDs indicating:

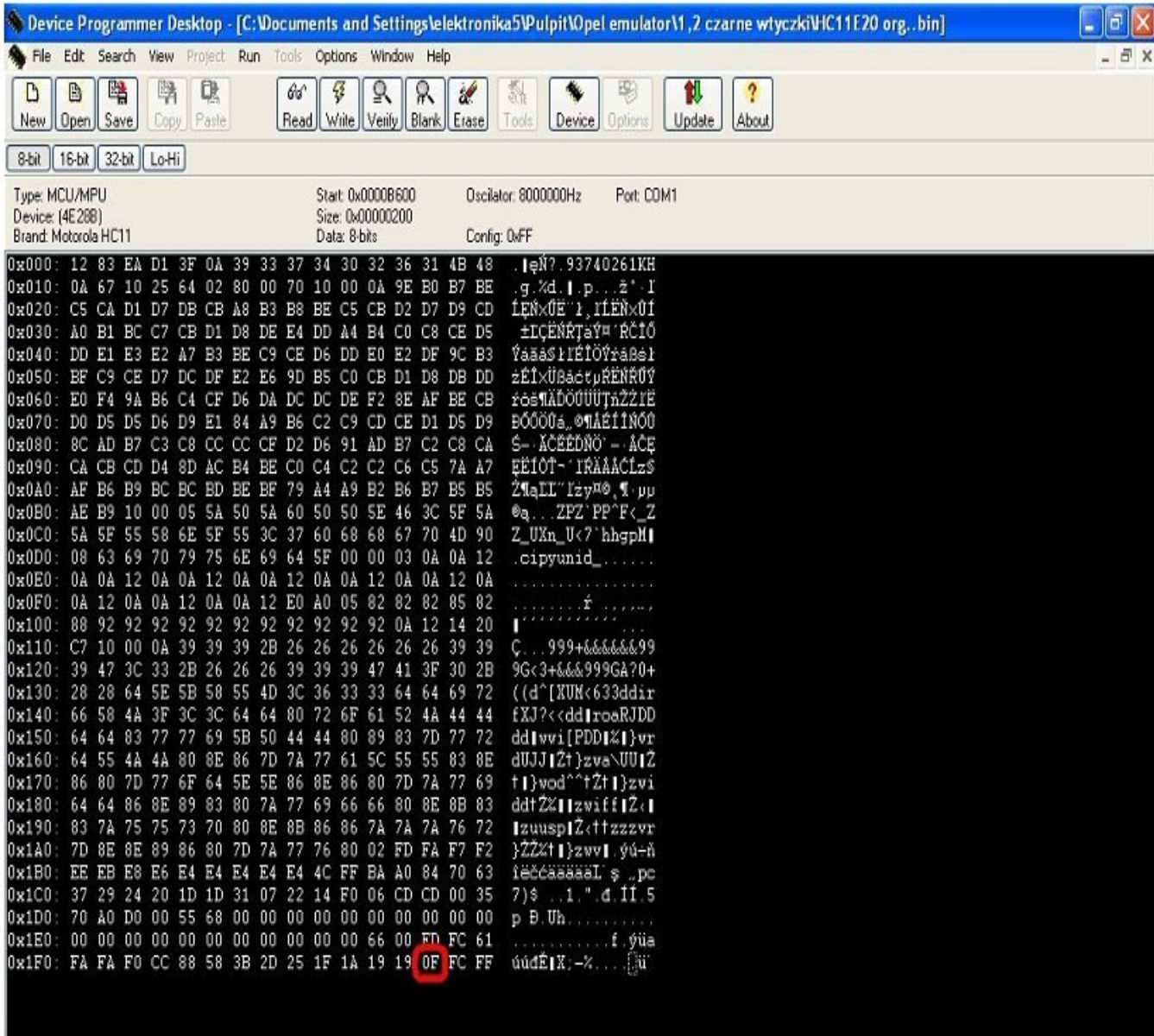
green - power

red – transmission (will blink and turn off).

**ECMs 1,2 -1,4 gasoline with two
black plugs and processor
Motorola HC11E20.**



In ECM find processor Motorola HC11E20.



Type in 1FD value 0F

To use emulator type in eeprom of processor
Motorola in address 1FD value 0F.



Connecting emulator in place of a original immobilizer in the ignition switch.

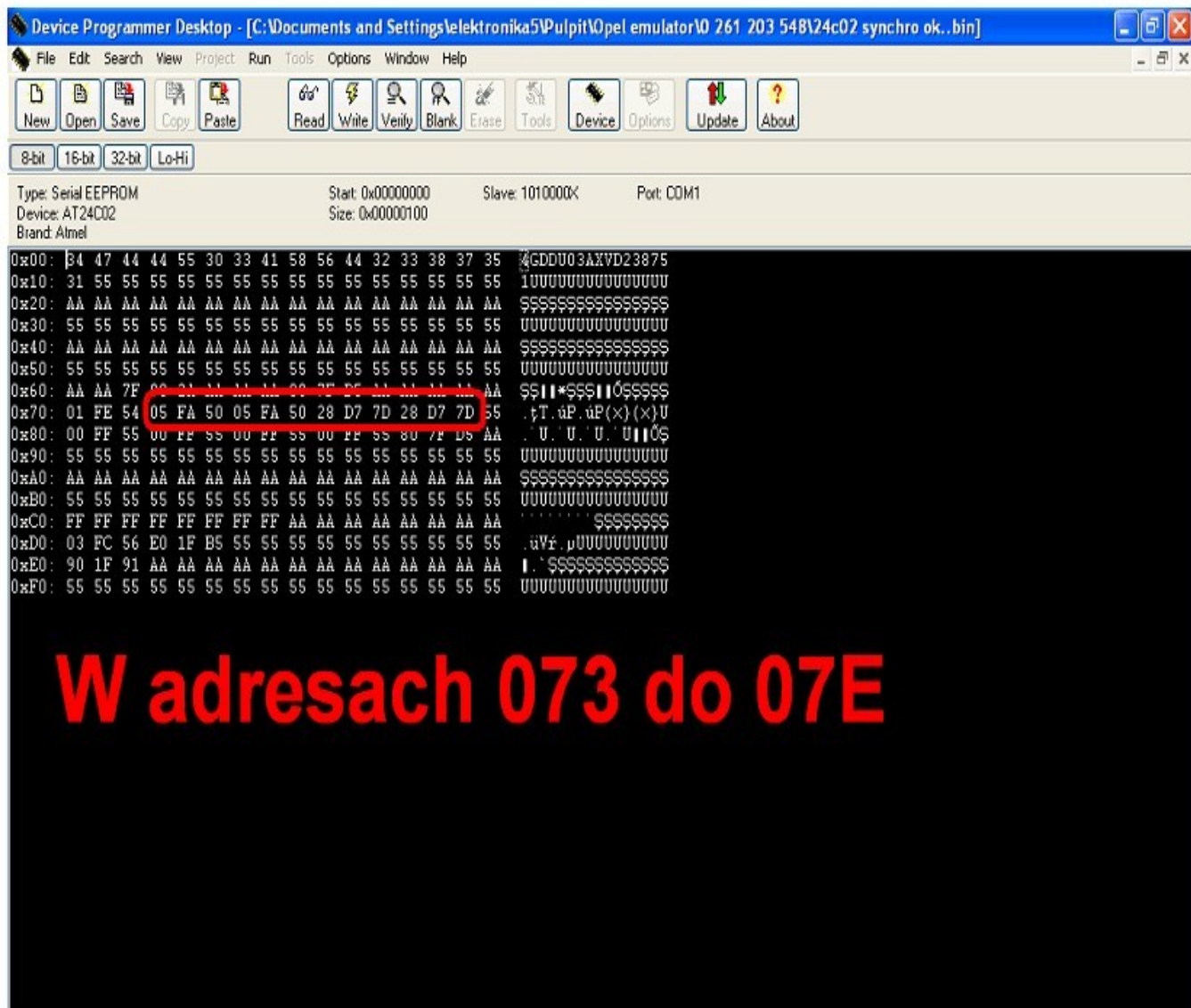
**Pin 4 - ground
Pin 5 – power ACC
Pin 7 – immo**

**Additionally connect in plug immo
pin 6 with 7
(involve troubles about speed signal).**

ECMs 2,0 and 2,2 gasoline with memory eeprom 24c02

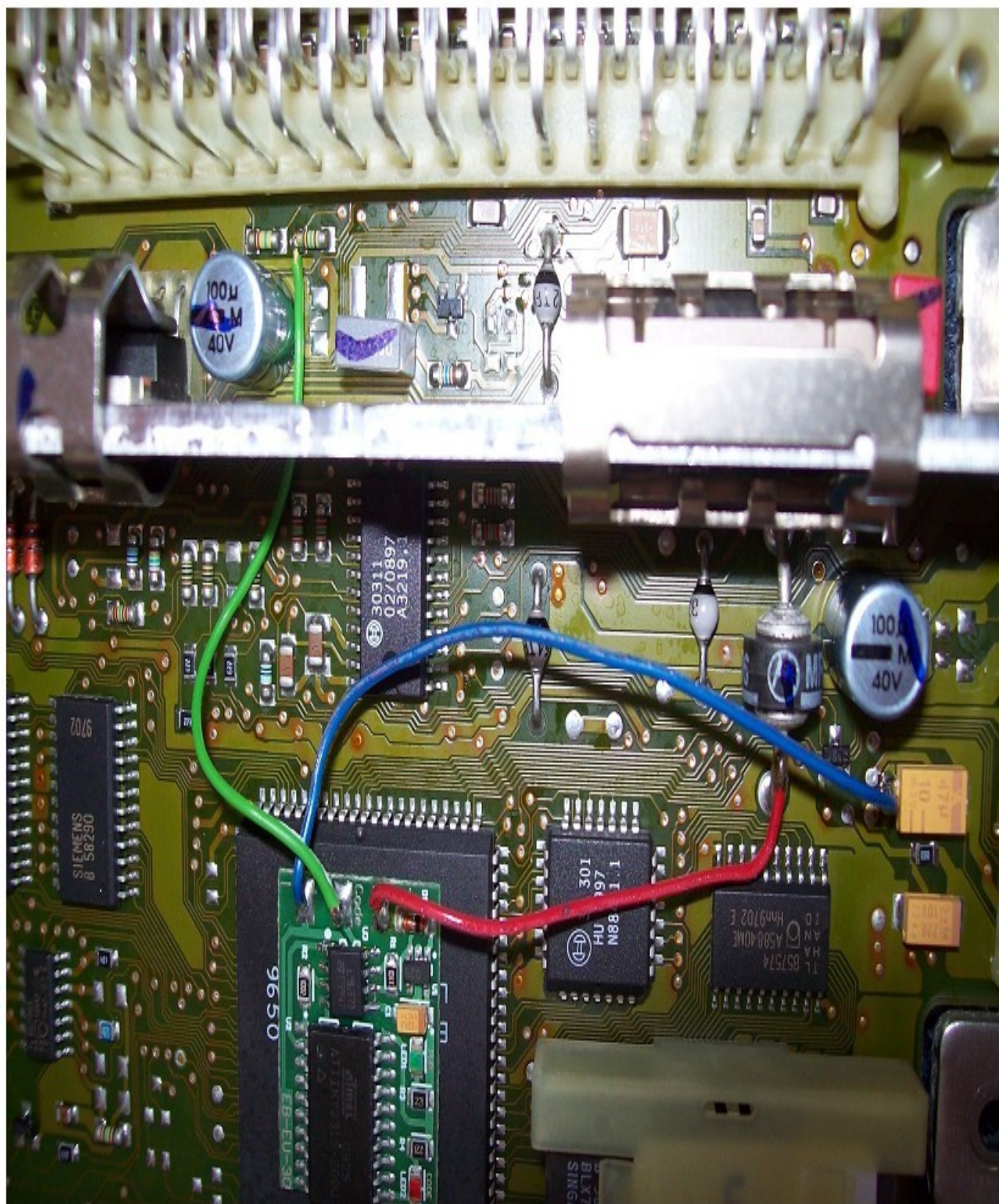


In ECM find eeprom 24C02.



W adresach 073 do 07E

**To use emulator type in eeprom 24C02 from
address 072 to address 07E value:
05 FA 50 05 FA 50 28 D7 7D 28 D7 7D**



Connecting emulator in ECM:

Pin 2 - ground

Pin 37 – power ACC

Pin 9 – immo

**Additionally disconnect immo and connect in
plug immo pin 6 with 7
(involve troubles about speed signal).**

**Before connecting the driver, emulator must be
precisely isolated by the isolation strap.**