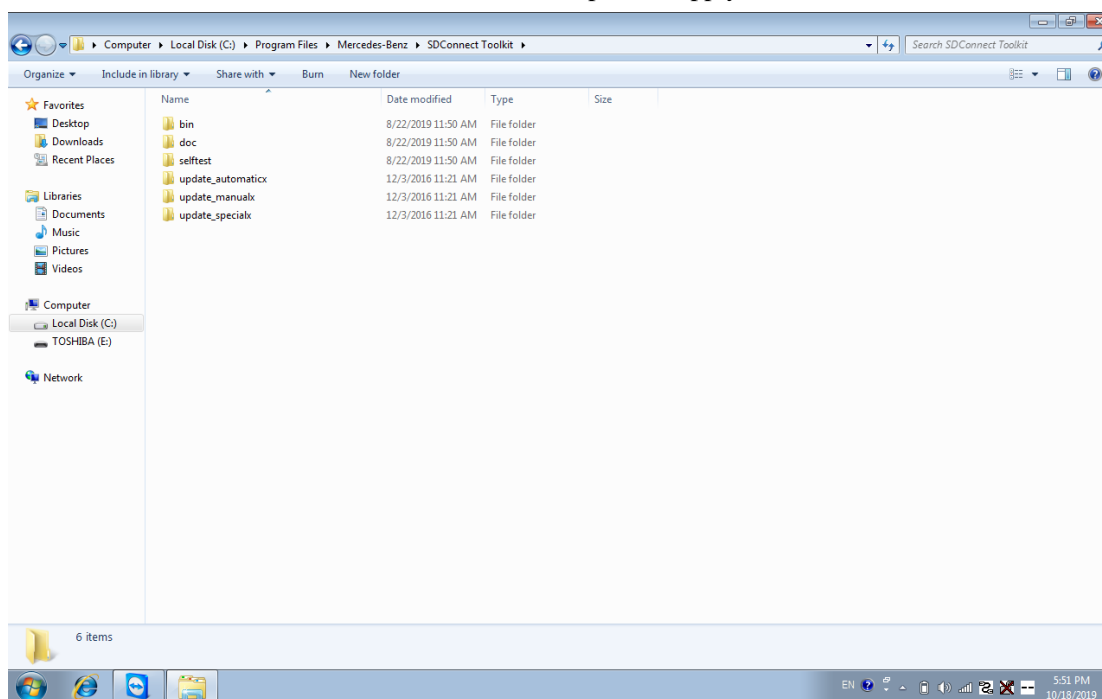
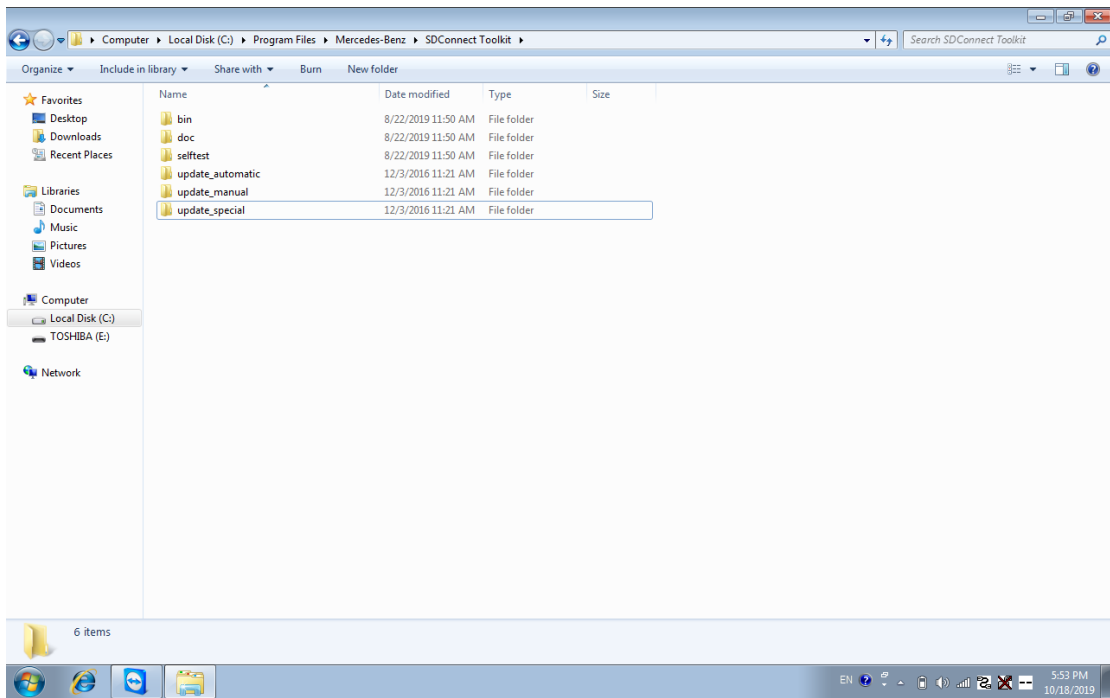
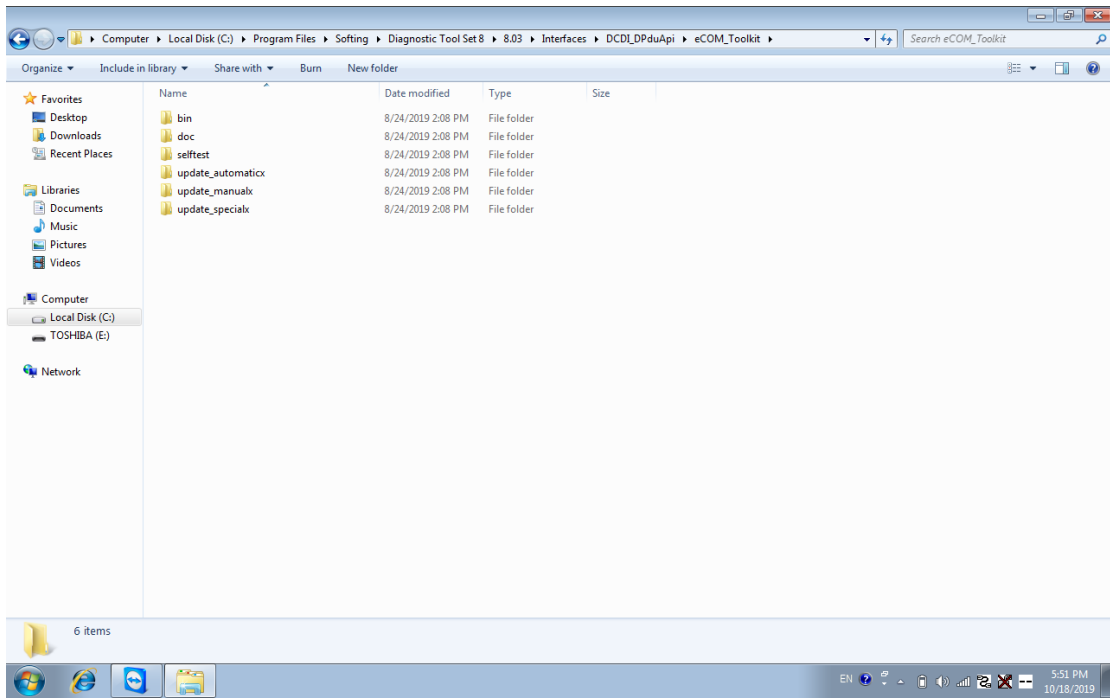
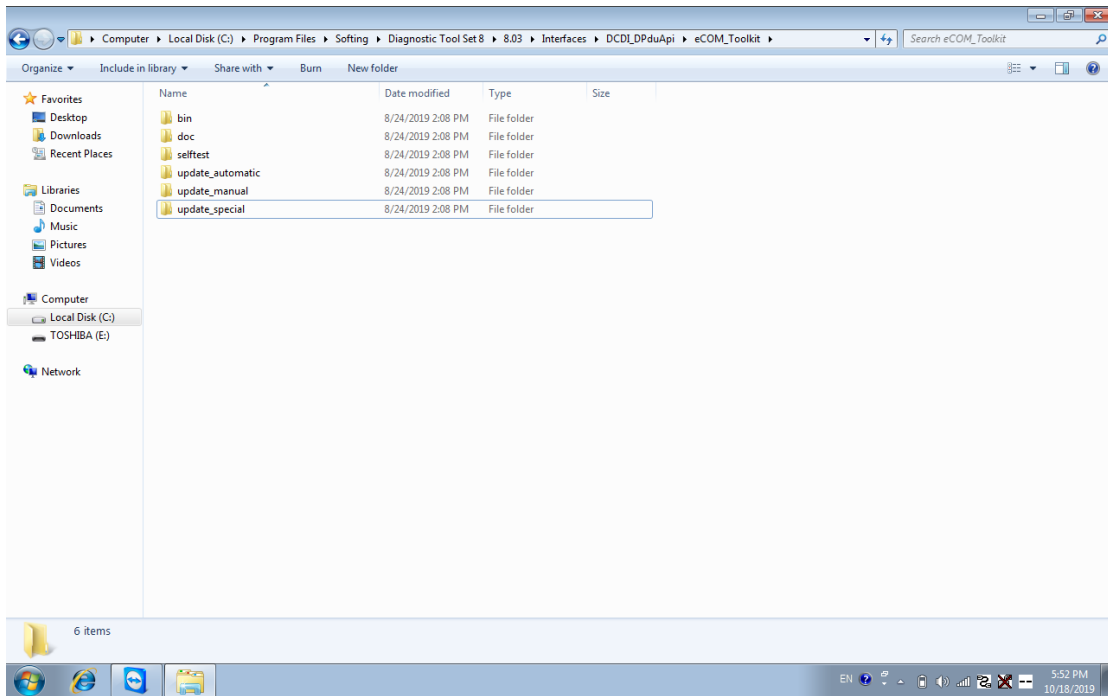


MB SD Connect C4 C5 Firmware Update

- Path 1: C:\Program Files\Mercedes-Benz\SDConnect Toolkit
- Path 2: C:\Program Files\Softing\Diagnostic Tool Set 8\8.03\Interfaces\DCDI_DPduApi\eCOM_Toolkit
- ◆ Change “update_automaticx、update_manualx、update_specicalx “ in Path 1 and Path 2 to “update_automatic、 update_manual、 update_specical “ (delete letter “x” from these 3 files update_automaticx、 update_manualx、 update_specicalx), after changing file name ,please refer to picture 3,4 below.
- ◆ After changing file name , reboot the laptop .
- ◆ You need to install 6pcs AA battery to C4/C5 (check the PDF file I sent to you)
- ◆ Obd cable is need to connect with a car or 12V power supply.







- ◆ Right click on lower right corner of the computer and select "**Administrator**", then choose "**Software Update**"



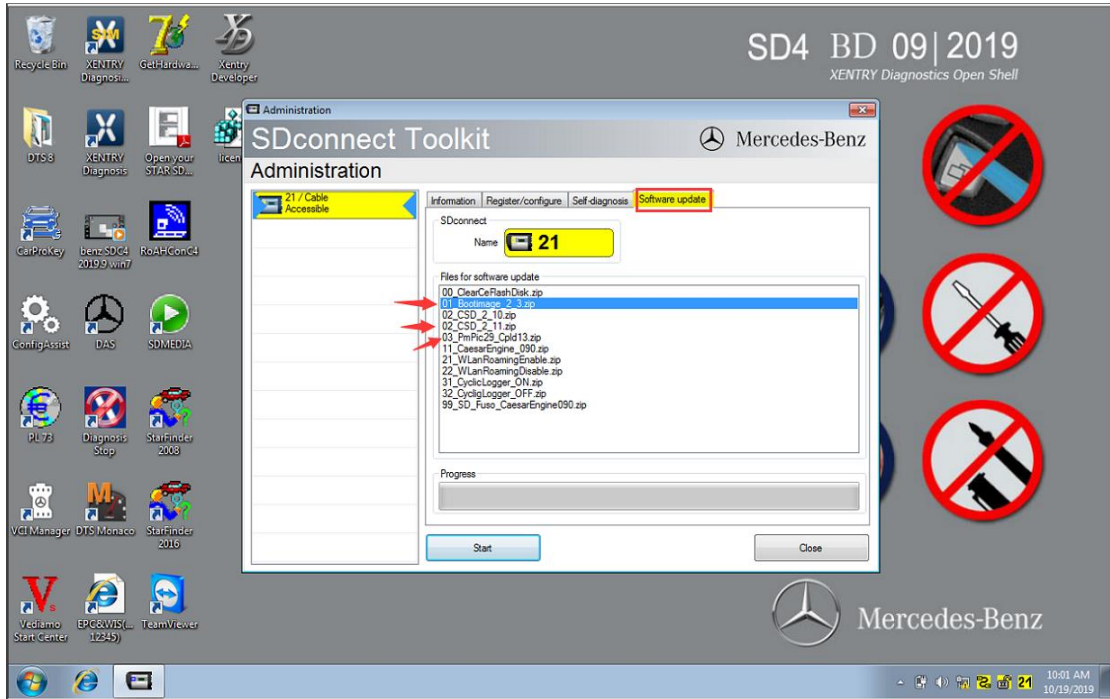
www.obdii365.com

◆ Please update these 3 files below.

◆ 02_CSD_2_10.zip »

01_Bootimage_2_3.zip »

03_PmPic29_Cpld13.zip



www.obdii365.com