



KEY READER

用户手册

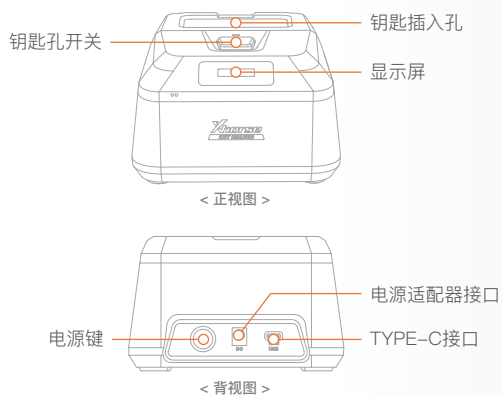


概述

KEY READER是一款专业的便携式光学识别设备,可快速、准确地识别各种汽车及摩托车钥匙(包括塑料钥匙及铝钥匙等),识别结果通过图像智能标注关键点。该设备可连接Xhorse数控机或通过已安装APP的智能手机控制操作,使用简单方便,稳定可靠、识别准确。



1. 设备外观



2. 性能参数



3. 按键说明

① **电源键**: 长按电源键5s, 设备开机; 长按电源键5s, 设备关机。



② **钥匙孔开关**: 控制钥匙卡口开闭。



4. 屏幕显示说明

开机后, 屏幕会陆续显示 "Xhorse" 字样、版本号、蓝牙图标及产品序列号, 当手机成功连接蓝牙后, 将显示蓝牙连接状态图标及产品序列号。



5. 连接手机

点击APP主页的【齿形码加工】, 选择钥匙胚种类, 然后点击【光学识齿】进入识齿界面; 光学设备默认采用蓝牙的方式连接手机。(设备也可使用WiFi连接, 只需在设备界面选择WiFi连接即可)



① 蓝牙连接

点击【连接设备】, 页面显示当前可连接设备, 根据设备序列号选择相应设备连接。连接成功, 设备屏幕会显示蓝牙图标, APP显示蓝牙已连接及对应设备SN号。

*安卓手机首次使用APP连接设备时, 需要进行蓝牙配对设置



Xhorse APP

Xhorse |

请前往苹果APP STORE或安卓各大应用市场下载使用



② WiFi连接

1) 选择WiFi连接后, 点击【连接设备】, 页面显示当前可连接设备, 根据设备序列号选择设备连接。
2) 输入当前手机连接的WiFi账号和密码(或使用手机热点), 软件会根据用户输入的内容进行连接。连接成功后, APP 显示WiFi 已连接及对应设备序列号。



光学识齿



提示:
1. 请将钥匙按图示方法放入设备中;
2. 点击【识齿】后开始识别钥匙齿形, 等待识别结果。

6. 设备使用

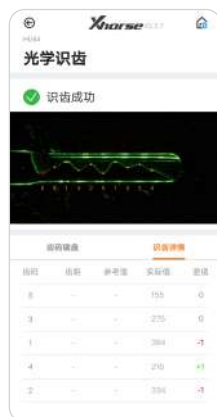
① 连接完成后, 点击【识齿】。

②根据图示准确放置钥匙后, 点击【识齿】, APP界面显示【正在识齿中】, 设备屏幕显示【识齿中】。

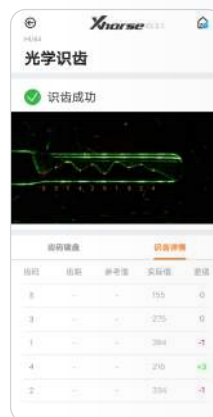


③ 识齿完成后, APP界面显示出齿码数据。

< 蓝牙连接模式下测量 >



< WiFi连接模式下测量 >



7. 保养维护

- 请勿猛烈撞击、震动或抛掷主机。
- 请勿用水或其它液体直接冲洗主机及部件, 不可使用湿布擦拭机器。
- 请勿将主机置于高温、高湿或有大量灰尘的地方。
- 请勿私自拆卸或改装本设备, 否则可能会造成主机主板损坏或电池起火等意外事故。
- 请保护好主机显示屏等关键部件, 防止尖锐的物品致其损坏。



8. 质保及售后说明

光学设备保修期为一年, 以交易凭证上的日期为准; 若无交易凭证或交易凭证丢失, 则以厂家记录的出厂日期为准。

※ 以下情形恕不免费保修:

- 未按说明书要求使用而造成机器故障的;
- 因自行修理或改装导致机器损坏的;
- 因跌落、碰撞或不当电压造成机器故障的;
- 因不可抗力造成机器损坏的;
- 因长时间在恶劣环境中或车辆、船舶上搭载使用, 造成机器故障或损坏的;
- 因使用而导致主机外壳污旧、磨损的。

产品售后维修及技术支持, 请联系经销商或扫描说明书背面二维码, 下载Xhorse官方APP, 咨询在线客服。

图片仅供参考, 产品以实物为准。Xhorse对本说明书保留所有权利。未经许可, 禁止任何个人与组织以任何形式对本手册的任何部分进行复制和传播。由于产品改进, 本手册内容可能会发生变更, 恕不另行通知。



KEY READER

User Manual

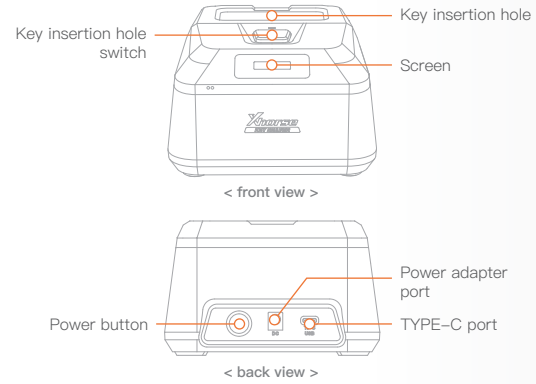


Overview

KEY READER is a professional and portable key recognition device that is able to recognize almost all car and motorcycle keys (including plastic keys and aluminum keys) quickly and accurately on the market. The recognition result is marked with key points intelligently. The device can be connected to Xhorse CNC machines or controlled by smartphone with Xhorse APP. It's very easy to use with great stability and accurate identification result.



1. Structure diagram

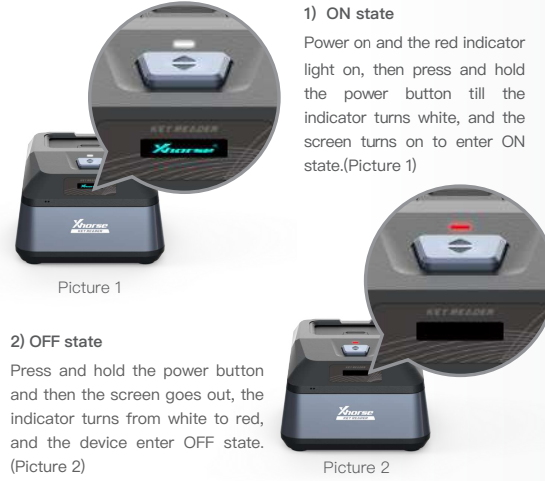


2. Performance parameter

- Screen size: 0.91" OLED
- Camera resolution: 13MP
- Voltage: 8V-20V

3. Button instruction

① **Power button:** press and hold the power button for 5 seconds to turn on the device. And press and hold for 5 seconds to turn off the device.



1) ON state
Power on and the red indicator light on, then press and hold the power button till the indicator turns white, and the screen turns on to enter ON state.(Picture 1)

2) OFF state
Press and hold the power button and then the screen goes out, the indicator turns from white to red, and the device enter OFF state.(Picture 2)

② **Keyhole switch button:** Open or close the key insertion hole.



4. Screen display instruction

After turning on the device, the screen will display the words "Xhorse", the device Ver and the Bluetooth icon and the device SN in succession. When your phone connects to the device by Bluetooth successfully, the screen will display Bluetooth connection status icon and the device SN.



5. Connect to phone

Click on [Cut by Bitting] on the APP homepage and select the type of key blank, then click on [Optical Identification] to enter the bitting recognition interface. The KEY READER will connect to the mobile phone via Bluetooth by default. (if you want to connect with WIFI, you can select WiFi connection in the identification interface)



① Bluetooth connection

Click on [Connect] and the interface displays the connectable devices, then select the device to connect according to the device SN. If it's connected successfully, the device screen will display Bluetooth icon, and the APP will display Bluetooth connected and corresponding device SN.
*Android phones need to set Bluetooth pairing when connecting to the device via APP for the first time.



Xhorse APP

② WiFi connection

1) Select WiFi connection, click on [Connect] and the interface displays the connectable devices, then select the device to connect according to the device SN.
2) Enter WiFi name and password that mobile phone connecting (or turn on the mobile hotspot and enter the name and password of the hotspot), and the APP will connect automatically and then display WiFi connected and corresponding device SN.

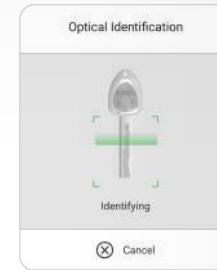


Tips: 1. Put the key into device according to the figure.
2. Click [Identification] to start identify key bitting information, waiting for identification result.

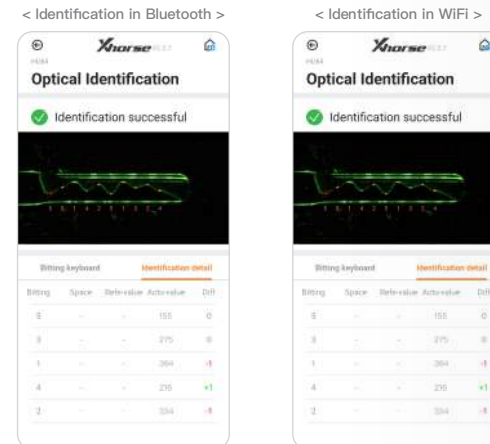
6. Operation instruction

① After successful connection, click on [Identification].

② Place the key according to the figure and click on [Identification], then the APP interface will display [Identifying], and the device screen will display [Identifying].



③ The device screen will display [Complete] and the APP will display the bitting data after successful identification.



7. Maintenance

- Do not violently hit, shake or throw the device.
- Do not directly rinse the device with water or other liquids, and do not wipe the device with a damp cloth.
- Do not place the device in high temperature, high humidity or dusty environment.
- Do not disassemble or modify the device privately, otherwise it may cause accidents such as damage to the main board or battery fire.
- Please protect the key components (screen e.g.) to prevent sharp objects from damaging them.



8. Warranty and after-sale description

KEY READER has a warranty of 1 year. The warranty starts from the date on invoice. If there is no invoice or the invoice is missing, purchase records from factory is used as reference.

- ※ Within Warranty, free maintenance and repairing is not provided if the machine becomes dysfunctional due to the following reasons:
 - Operation without referring to or violating the user manual
 - Modifications or repairs to the machine by individuals
 - Falling, knocking or wrong voltage
 - Force majeure
 - Use of the machine in places such as ships that are bad for the machine for a long time
 - Damaged or worn-out plastic case due to frequent use

Regarding to customer service and technical support, please contact distributors or Xhorse online customer service team by scanning the QR code on the back and downloading Xhorse official APP.

The picture is for reference only, the product is subject to the actual product. All the information and illustrations in this document are for guidance only. Xhorse reserves the right to alter products designs, dimensions or info to improve the products quality. The contents of this document are fully protected by Copyright and may not be copied or reproduced in any form (e.g. mechanical, electronic, printing or video recording), without permission from Xhorse.

Xhorse |

DOWNLOADABLE FROM **GOOGLE PLAY STORE** AND **APP STORE**.

