

Overview

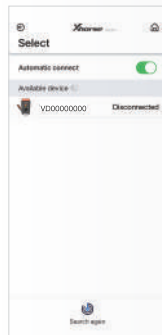
MINI OBD TOOL is a multi-function vehicle programming tool with vehicle diagnosis, Immo Programming, Throttle program, Tire pressure light reset, maintenance light reset and etc.

MINI OBD TOOL can connect with specific software or hardware by bluetooth, WIFI or interface.

1. Device Connection Success

① Connect To Device

Turn on KEY TOOL MAX, switch to MINI OBD TOOL interface, click [Select], available device will be shown on the screen, select correct device.



② Check Connection Status

Software will detect current device with software interface connection status, bluetooth connection status and WIFI connection status



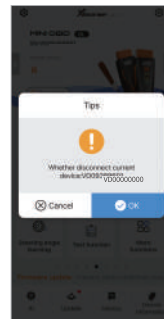
③ Device Connection Success

When KEY TOOL MAX success to connect to MINI OBD TOOL, Serial Number will be shown on the top of the screen.



④ Disconnect Device

When MINI OBD TOOL finish the job, disconnect MINI OBD TOOL.



2. Main Functions



Immo Programming



Maintenance Light Reset



Tire Pressure Light reset



Throttle Program



Xhorse APP

Xhorse |



DOWNLOADABLE FROM **GOOGLE PLAY** STORE AND **APP STORE**.



| 3. More Functions



Battery
Programming



Remote Manual
Programming



Steering Angle
Calibration



Key Code
Learning



EABS
Programming

| 4. Warranty And After-Sale Instructions

MINI OBD TOOL with one year warranty, and it is based on the date on the transaction voucher; If do not have transaction voucher or lost it, the factory date recorded by the manufacturer will prevail.

※ Situations on the below can not get free repairment

- Damage caused by not following the use instructions.
- Damage caused by repairing or retrofitting in private.
- Damage caused by fall, crash or inappropriate voltage.
- Damage caused by inevitable force.
- Damage caused by using in harsh environment or on the vehicle and ship for a long time; Get main body dirty and worn due to use.

Please get in contact with dealer or scan the QR code behind the instruction, download Xhorse official APP to get after-sale and technical support.

All rights reserved. Any individual or organization is forbidden to copy or spread in any form from this manual without permission.

Due to product improvements, the contents of this manual may change without notice

Notes: Support OBD port 12V/1A, 24V/0.5A, USB 5V/0.5A



MINI OBD TOOL

User Manual

