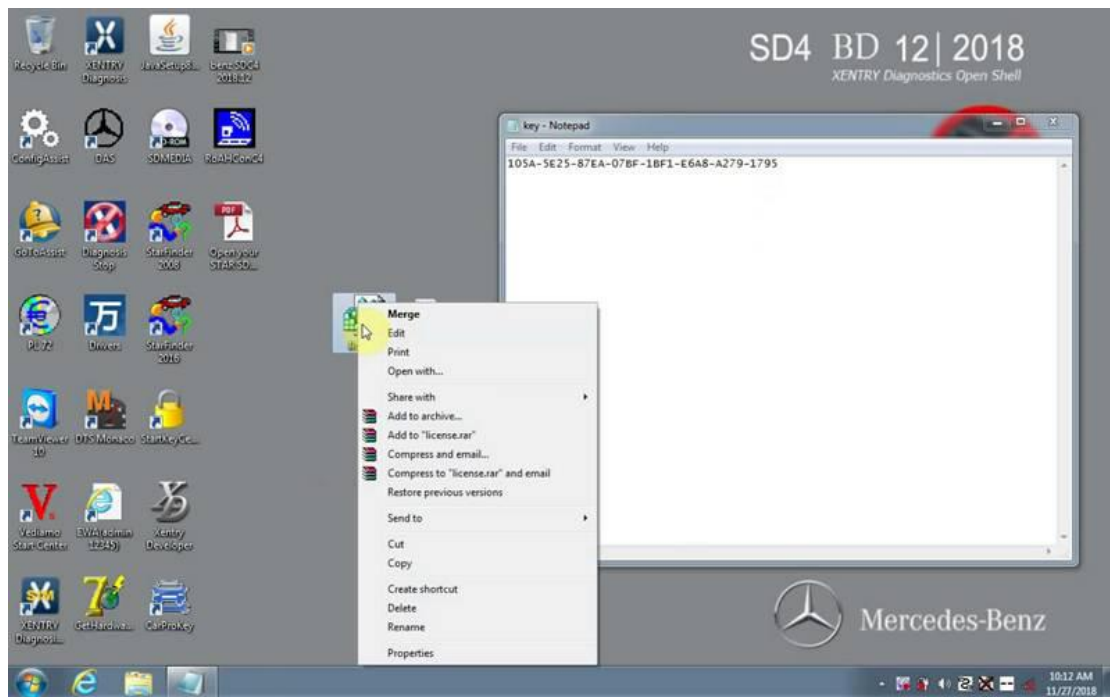


DAS

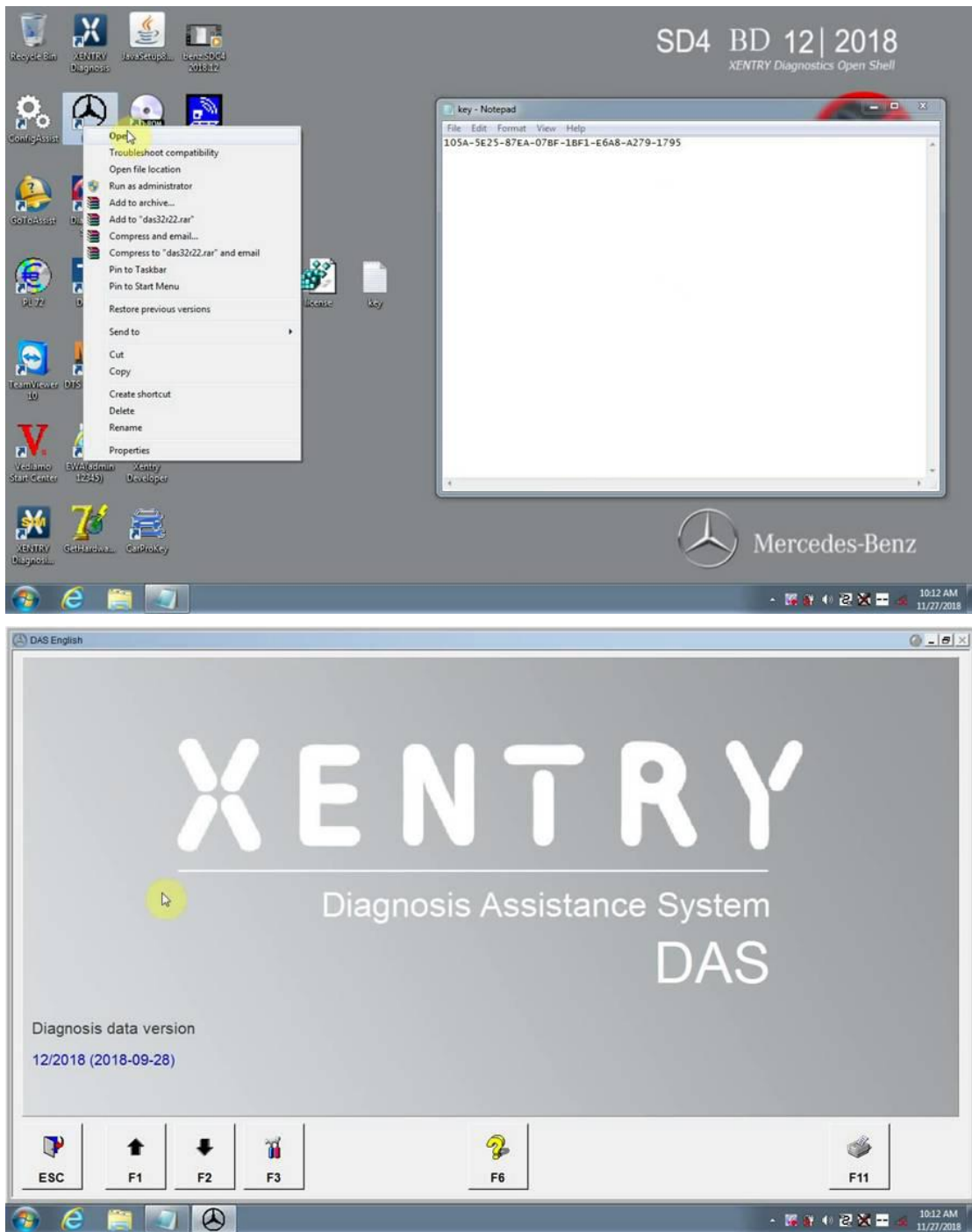
Open "Get Hardware ID ", Copy the HardwareID and send it to the dealer for generating "license.dat"



Open "license.dat"

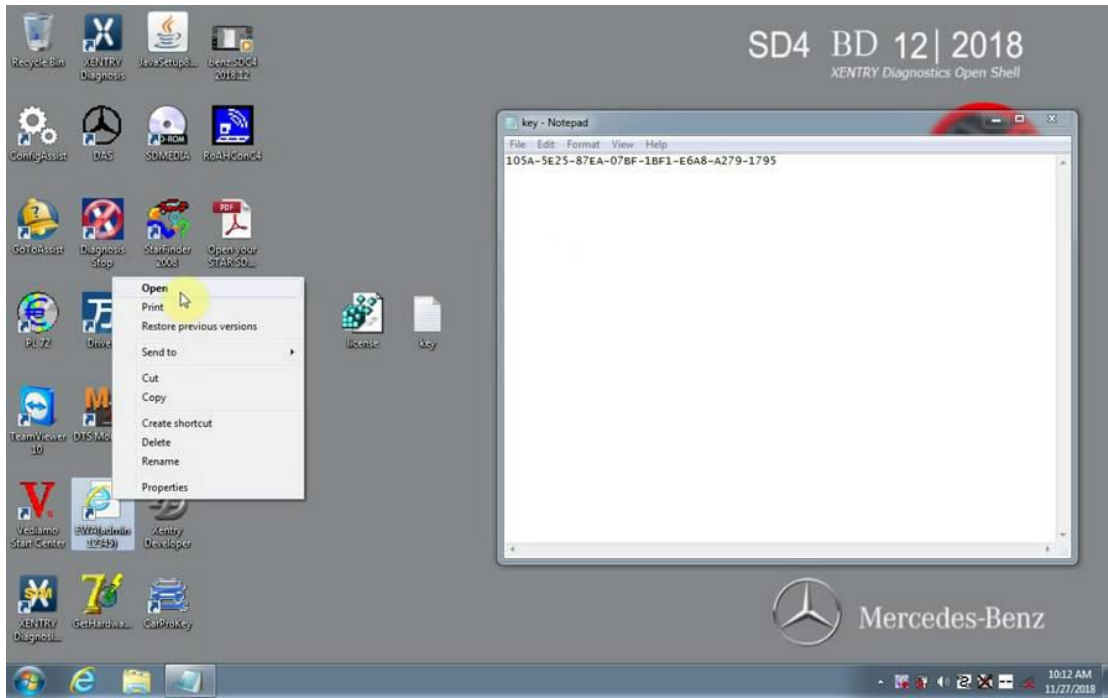


Open "DAS"



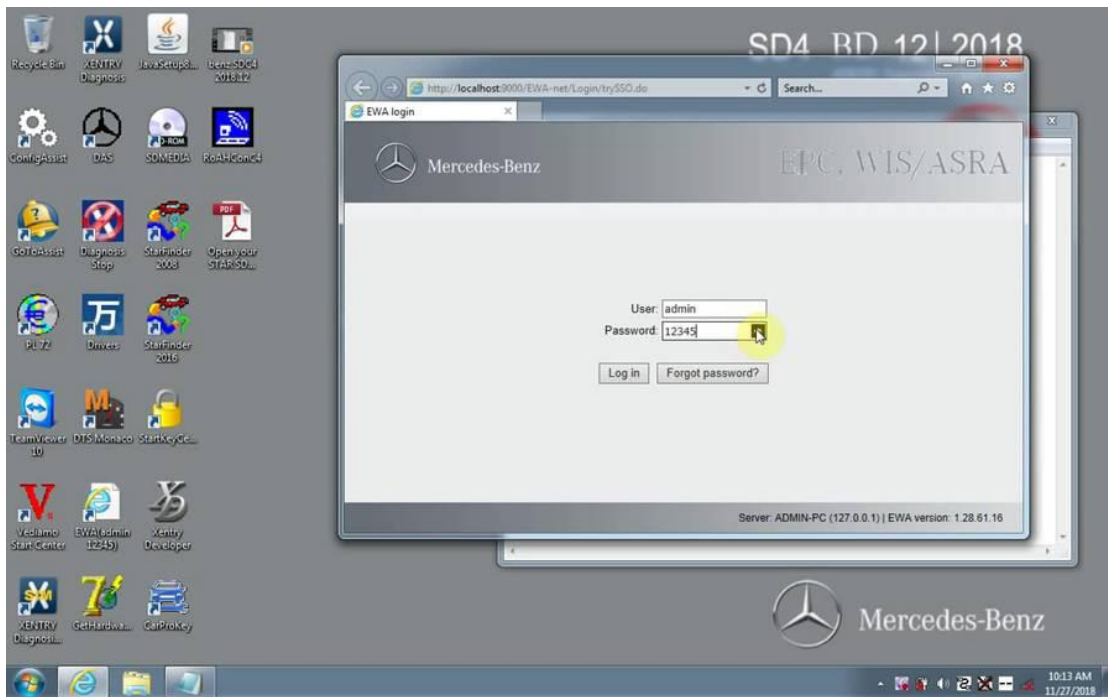
EPC WIS

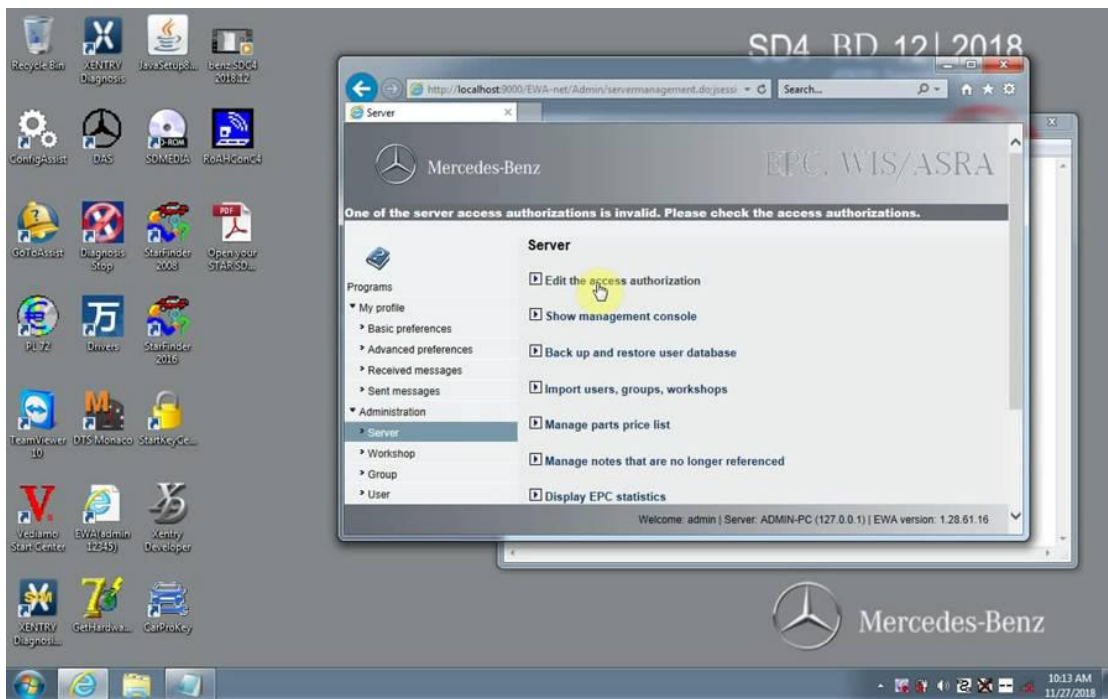
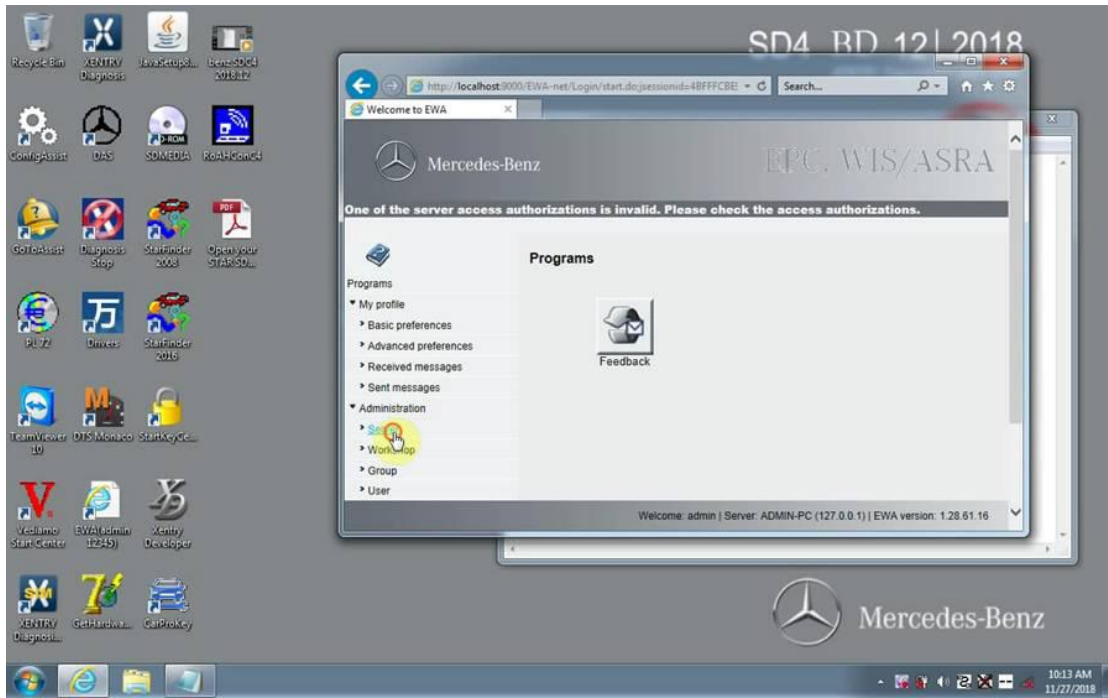
Open"EWA net"

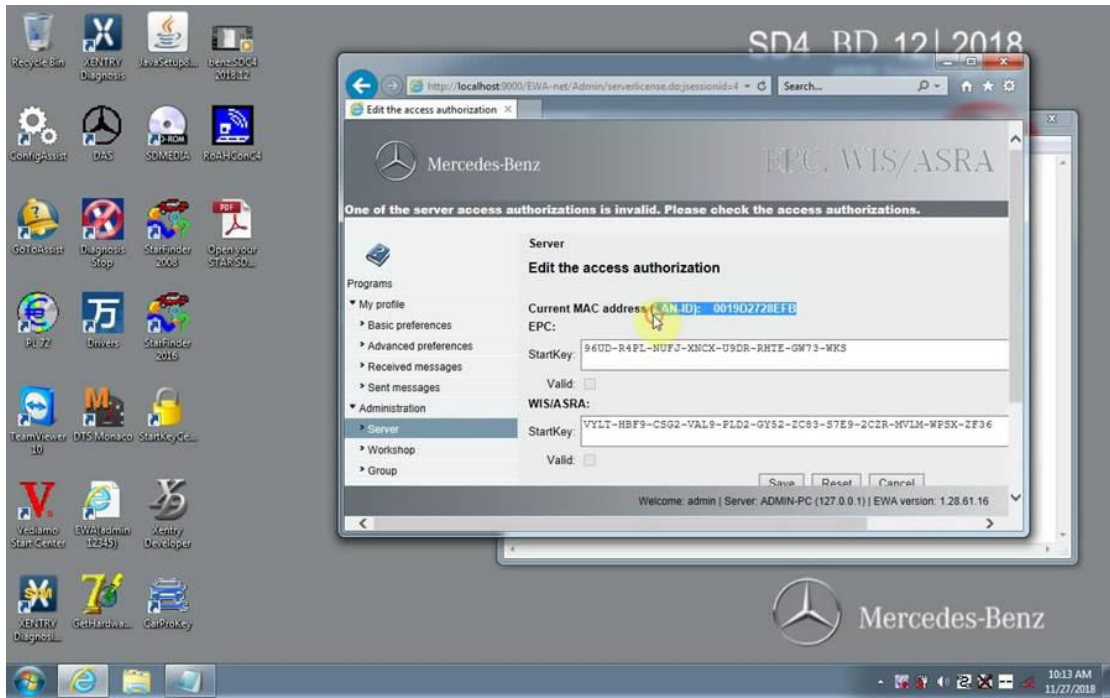


Name admin

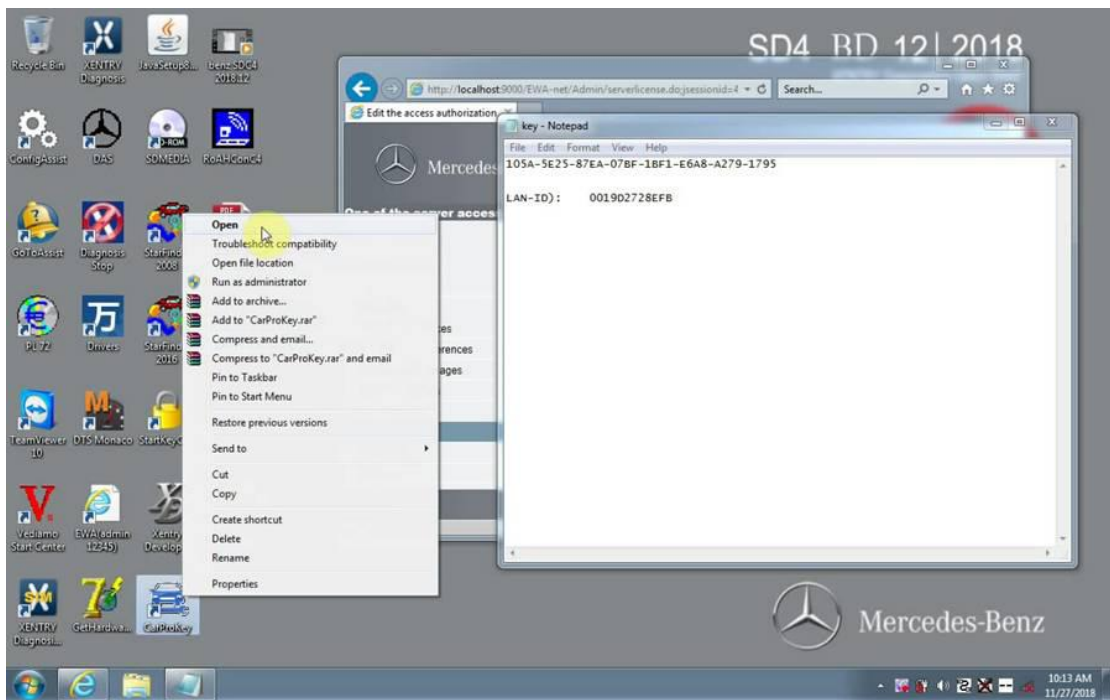
Password 12345

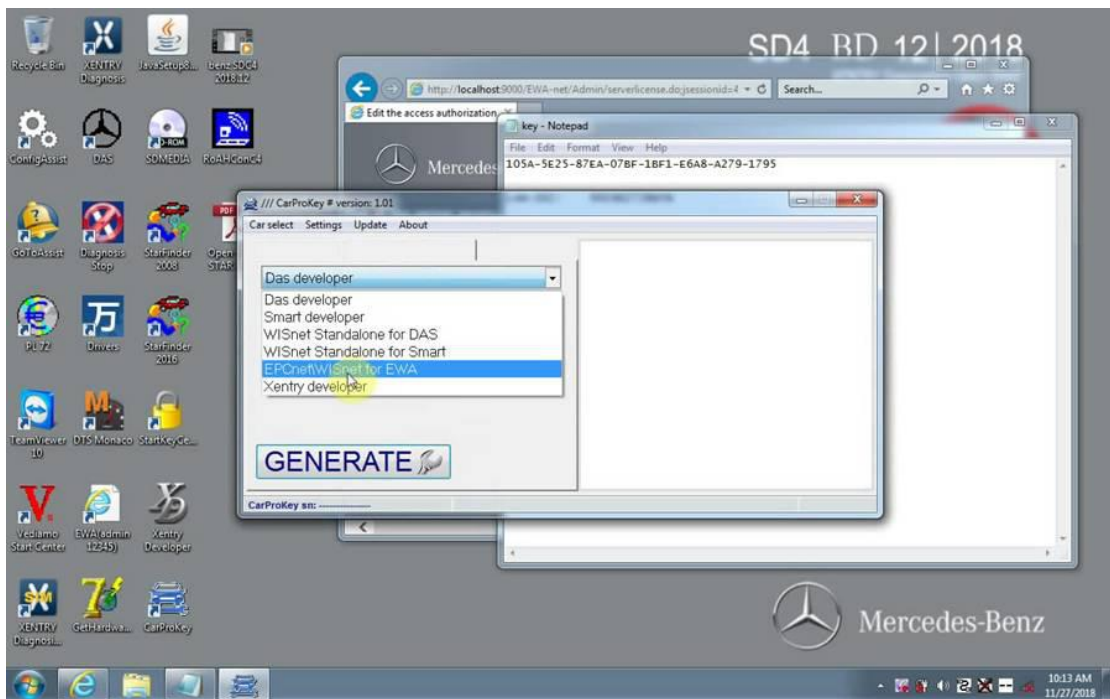


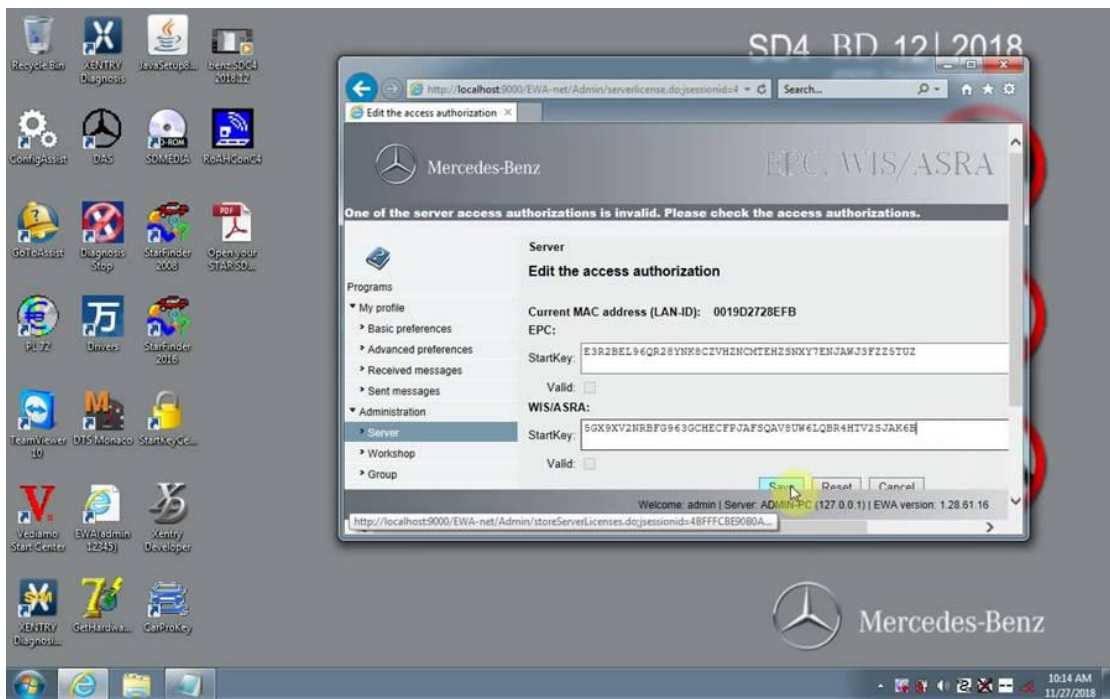
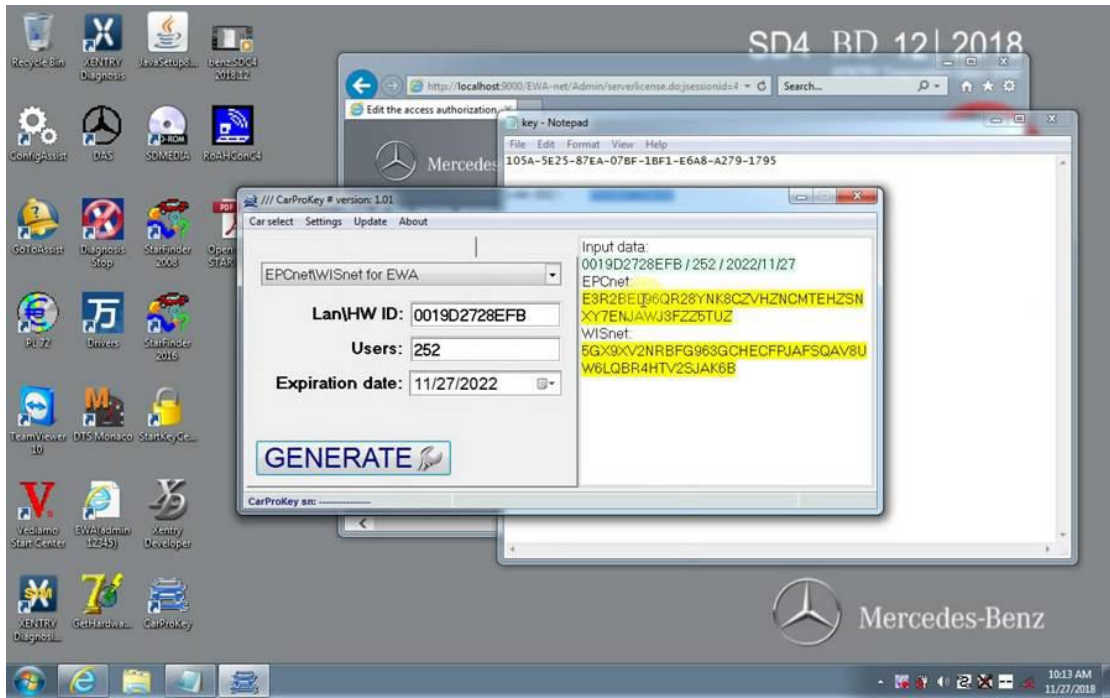


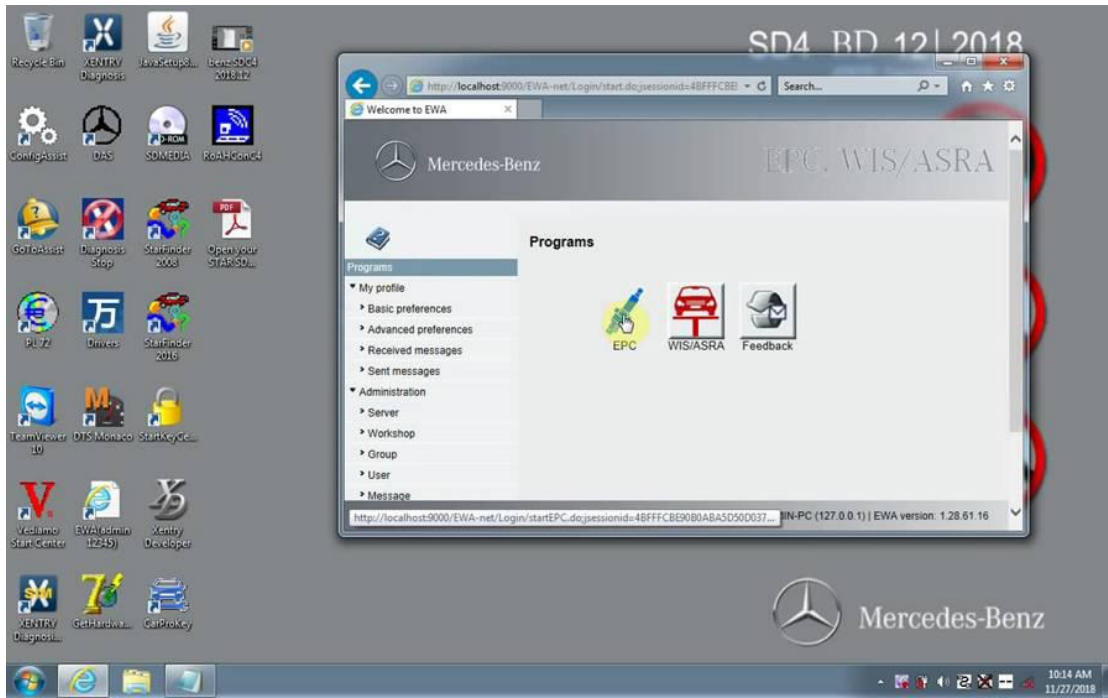


Open "CarProKey"









XENTRY Diagnosis  
Open "ConfigAssist"





SD4 BD 12 | 2018  
XENTRY Diagnostics Open Shell

key - Notepad

What device do you use for diagnosis?

Note: If you select a device you do not use, you have to restart ConfigAssist. The selection box will reappear.

XENTRY Diagnosis VCI    SDconnect

Simulation - without VCI

Mercedes-Benz

10:45 AM 11/27/2018

ConfigAssist

ConfigAssist

Import configuration    Configure    Export configuration

10:45 AM 11/27/2018





### Install StartKey



Unable to find a valid StartKey on the server.

**Device data**

Hardware ID: 4AD204292375  
App ID: 252  
[Export](#)

**Xentry DeveloperV1.1.0**

License Information

Hardware ID	App ID	Start Date	Expiration Date
4AD204292375	252	20120101	20220101

[Generate](#)

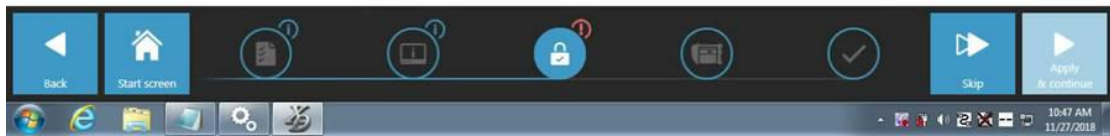
License String  
QYSHZGAP3SRAL3P2CR9CZ3D3KDBHQF54M6PN4K3EVRN3FFUA3GRVJINQ94MS9Y6C6KTBQA4542Q78DM4W6ZX

[Exit](#)

Shadowman-Services

**StartKey Ordering**

Please get in touch with your known contact.



### Install StartKey



Unable to find a valid StartKey on the server.

**Device data**

Hardware ID: 4AD204292375  
App ID: 252  
[Export](#)

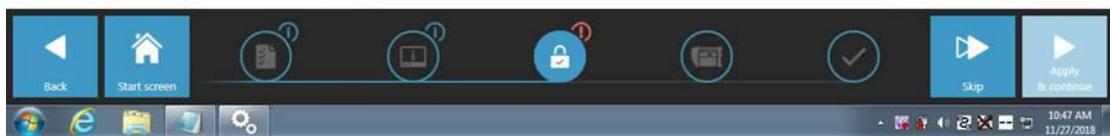
**StartKey**

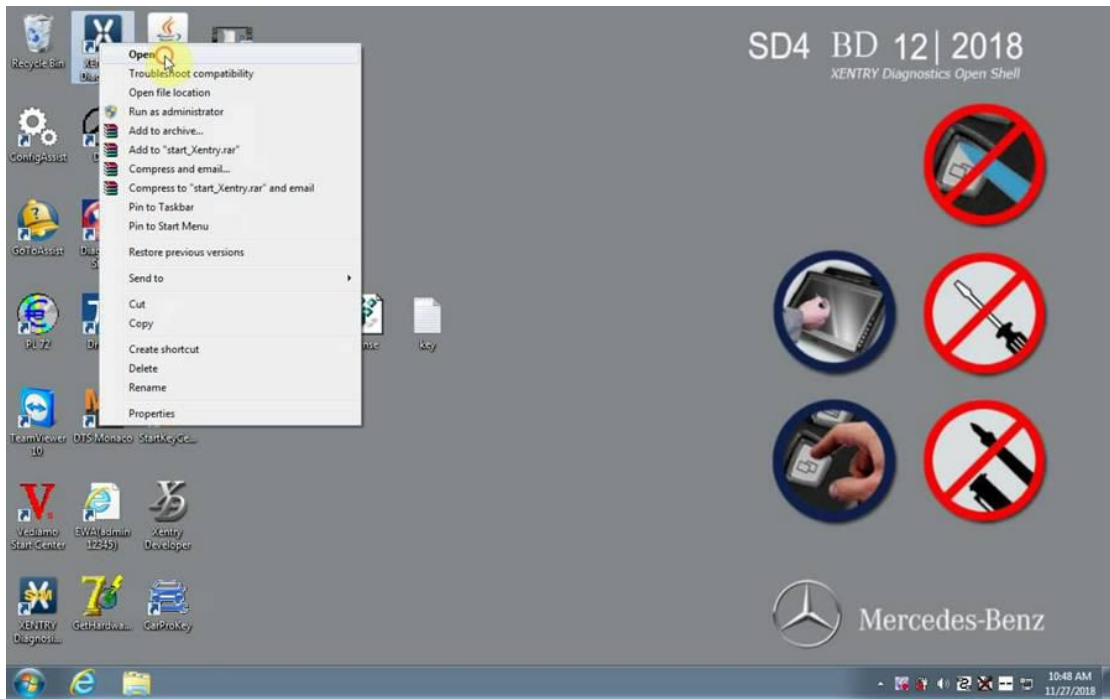
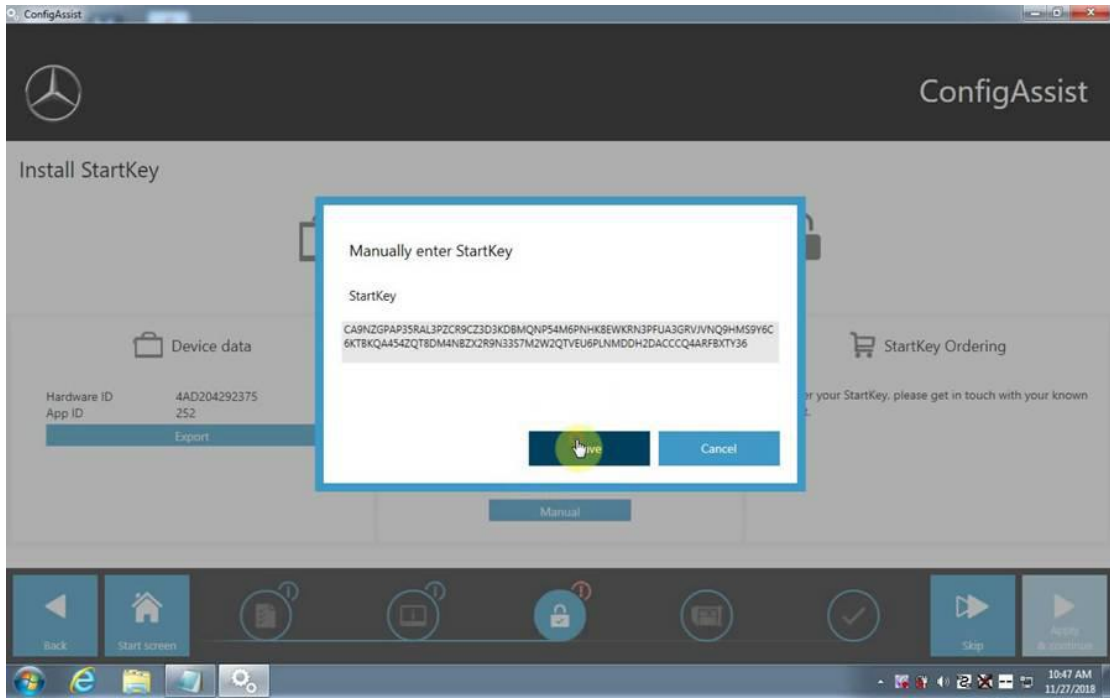
No StartKey installed.  
Select StartKey source

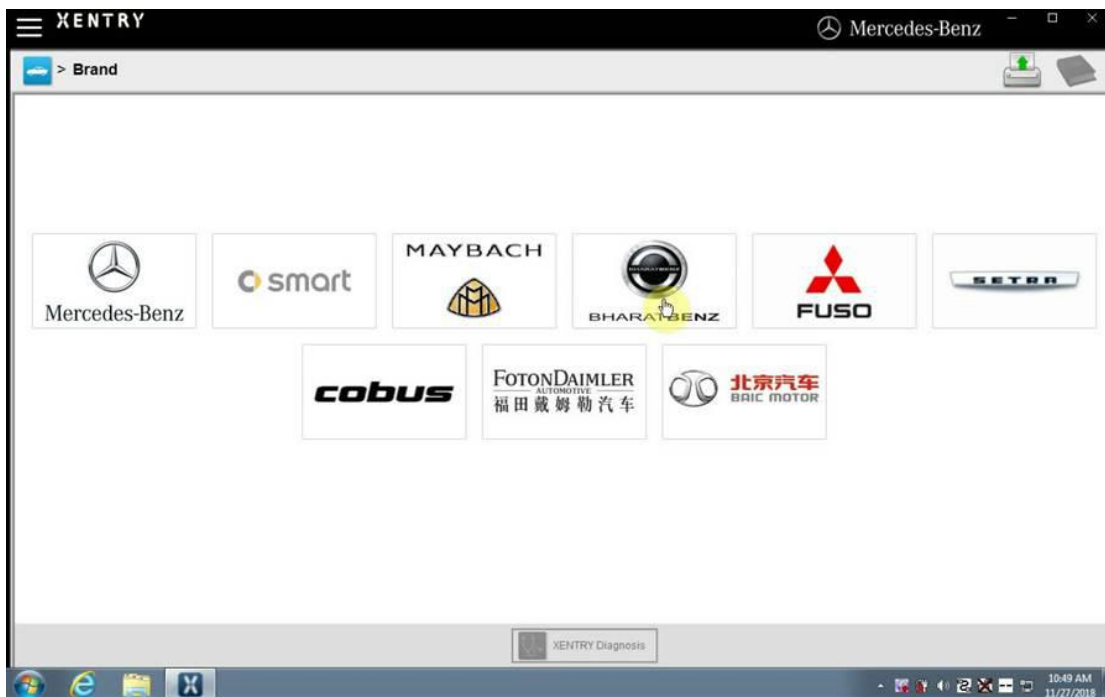
- [Online](#)
- [USB stick](#)
- [Physical](#)

**StartKey Ordering**

To order your StartKey, please get in touch with your known contact.







Open Computer –Local Disk C-ProgramData-LicDir copy "lic\_key\_2.dat", rename "lic\_key\_2.x4711" Set to read-only file

