

# User Manual

## **Statement :**

This handbook is the manual of H Series User(including:H100, H101, H102, H103, H104, H105, H106, H107, H108, H109,etc.)Without the written permission from the manufacturer, any company or individual shall not copy or backup it in any form (electronic, mechanical, photocopying, recording or otherwise).This manual is only operating instructions for H100 Series. If any result caused by using it on other equipment, the company does not assume any responsibility for it.

If not quality problems of H Series device , such as equipment failure caused by user abuse or misuse, unauthorized disassembly, repair equipment yourself, not operate or maintain by the instructions, lose it, the repair will not be free. Other product names mentioned in this manual are in order to describe how to use H Series device, and their copyrights are still observed by the original company.

H Series and files are used for normal vehicles maintenance. If used for illegal purposes, the company does not assume legal responsibility.

## **Note:**

This device complies with part 15 of the FCC Rules. Operation is subject to the following two conditions:(1) This device may not cause harmful interference.(2) This device must accept any interference received, including interference that may cause undesired operation.

## Content

Chapter 1 : Summary.....	1
1.1 Features.....	1
1.1.1 Advantages.....	1
1.1.2 Durability.....	1
1.2 Introduction of the device.....	2
1.2.1 The main unit and accessories.....	2
1.3 Hardware technical specification.....	3
1.4 Functions Setting.....	3
1.4.1 Functions Selection.....	4
1.4.2 System Setting.....	4
1.4.2.1 Language Selection.....	5
1.4.2.2 Font setting.....	5
1.4.2.3 Metric/Inch.....	6
1.4.2.4 Data logging.....	6
1.4.3 System Information.....	7
1.4.4 Device Self-test.....	7
Chapter 2: How to update software for .....	8
2.1 Update Tool software Installation.....	8
2.2 Register.....	11
2.3 Software Updating.....	12
2.3.1 First method(Upgrade with TF card).....	12
2.3.2 Second method(Upgrade with USB cable ).....	13

## **Chapter 1: Summary**

### **1.1 Features**

#### **1.1.1 Advantages**

- Multi-language environment can be applied in different countries and regions.
- The main unit system adopts ARM high speed chip to keep it running fast, stable and anti-jamming.
- Updating via TF card at any moment.
- Modern design and high-definition true color screen realize the integration of automotive industry and electronic information technologies and make auto diagnosis and key programming easier, practical and economical.

#### **1.1.2 Durability**

- Integrity structure design makes it crack resistance, shock resistance and durable.
- Industrial design ensures the tool work stably under tough environment, such as high and low temperatures.

## 1.2 Introduction of the device

### 1.2.1 The main unit and accessories(Picture as below)



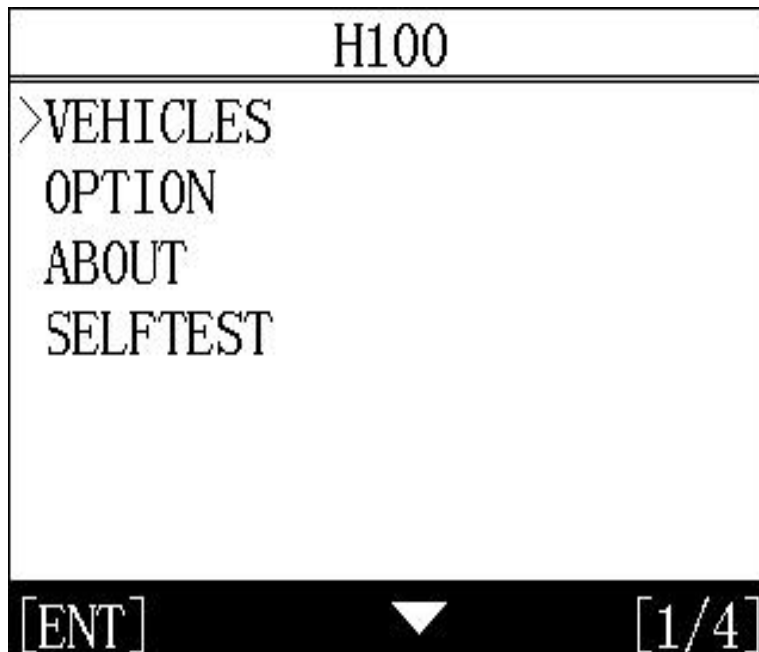
Name	Instruction
Testing cable port	Connect to the main test cable
Display Screen	Show information
F1	Keyboard input option key
F2	Keyboard input option key
Enter	OK
ESC	Exit or give up
Up	Up
Right	To right
Down	Down
Left	To left
TF card slot	To keep diagnostic program or data
USB interface	Connect with USB cable

### 1.3 Hardware technical specification

- Dimension: 165mm(L)\*86mm(W)\*28mm(H)
- CPU : ARM7
- Power Supply: DC12V
- Operation Power: DC12V
- Operation Temperature: -20~60°C
- Display Screen: 160\*160 TFT

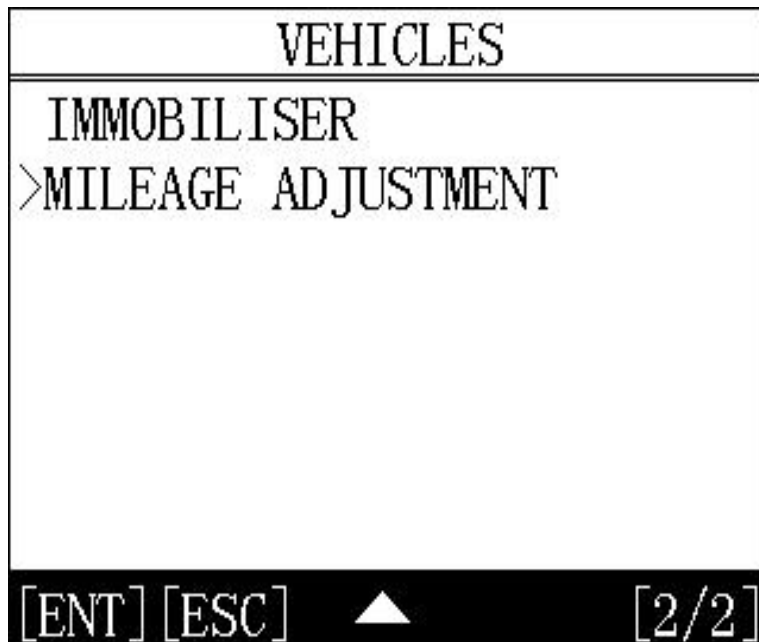
### 1.4 Functions Setting

Power on , and then press **ENTER** on the screen , then go to the function setting, setting information as shown below:



### 1.4.1 Function Selection

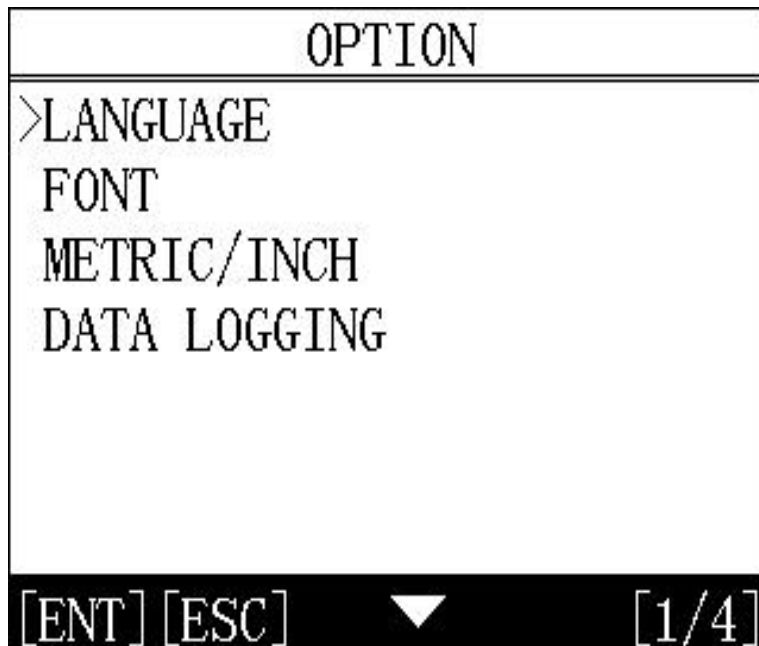
Select different functions according to different requirements.



**Note:** Software numbers and functions are different according to different product configuration. Further detailed information, please contact your distributor.

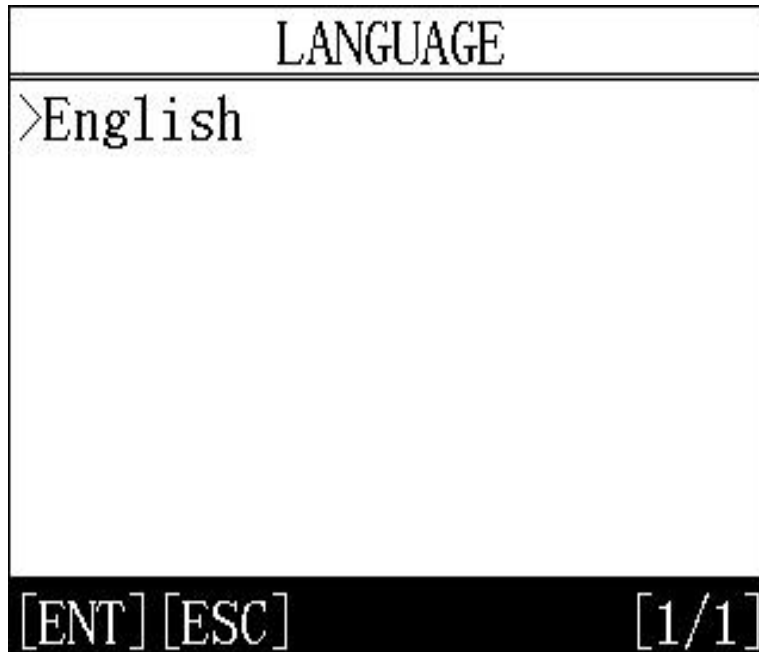
### 1.4.2 System Setting

Select System Setting, language and font can be adjusted, as shown below:



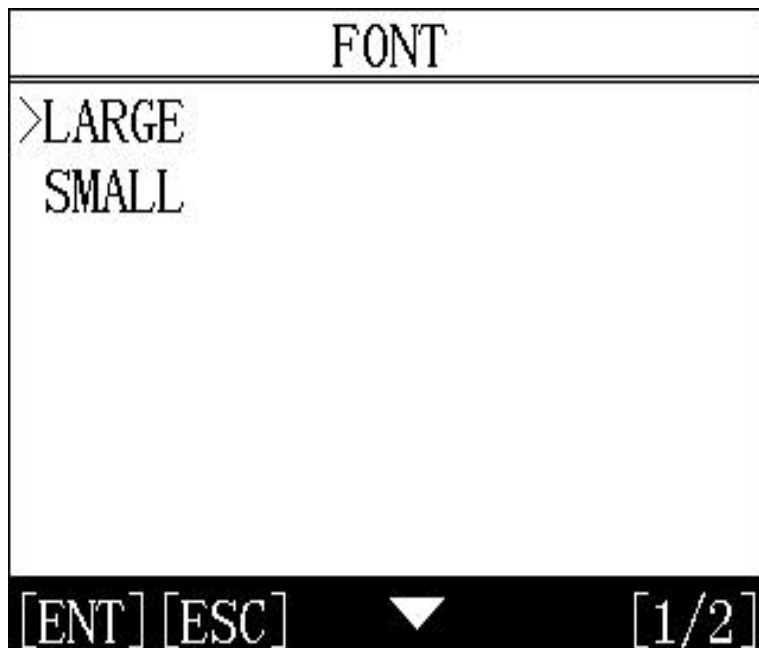
### 1.4.2.1 Language Selection

This device supports English. In the language directory, select required language and press ENTER to confirm it.



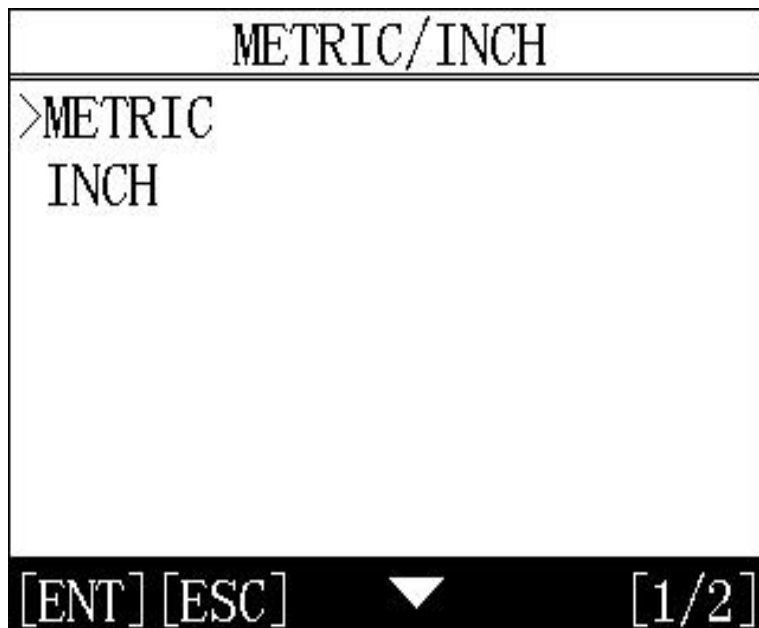
### 1.4.2.2 Font setting

According to requirement, select different font



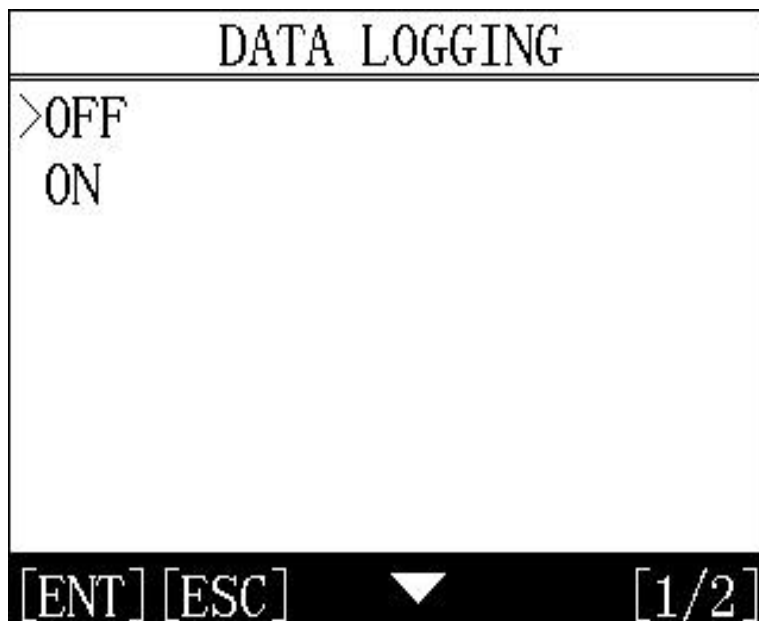
### 1.4.2.3 Metric/Inch

According to different requirements, select the Metric/Inch by the up and down keys, and press ENTER to confirm as show below,



### 1.4.2.4 Data Logging

Any problems during testing, please use the Data Logging function to record the test process and send the data to us. Select ON by the up and down keys and press ENTER to confirm, shown as below,



**Note:** Every time you need to select ON if you want to record the data before testing car.



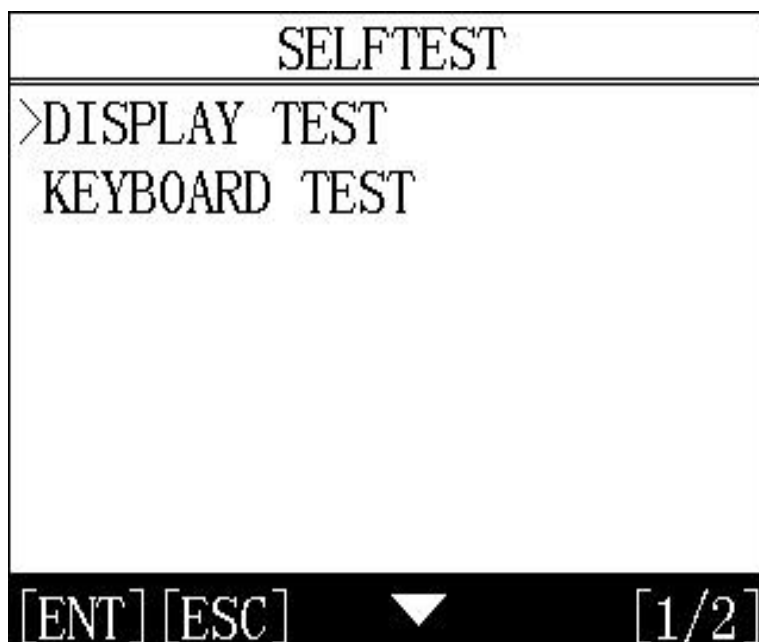
### 1.4.3 System Information

System information includes product serial number, hardware version, software version, release date, register password, etc.



### 1.4.4 Device Self-test

Device self-test includes screen display, keyboard testing, hardware self-testing, etc. If it cannot show enough pictures on the screen, keyboard not work, and hardware self-test not get through, please return this product to the manufacturer.



## Chapter 2: How to update software for

### 2.1 Update tool software installation

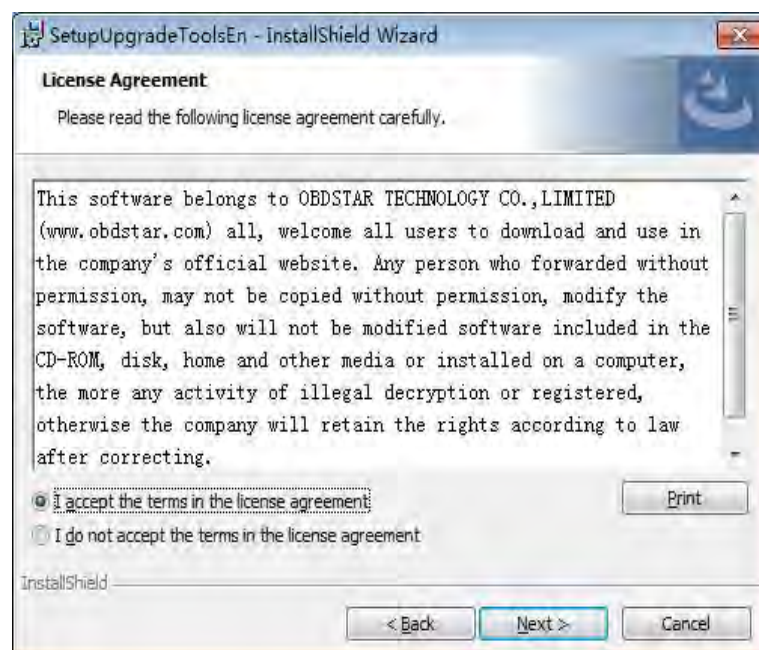
Login our website:<http://en.obdstar.com> and click "One Key Upgrade".

Download the update tool and diagnostic software, double click, then go to the next step:

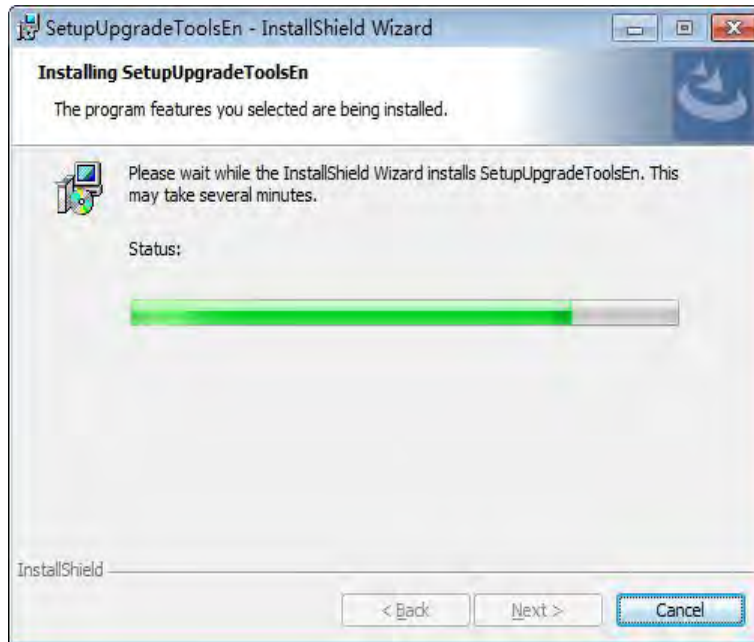
#### Step 1 : Click "Next"



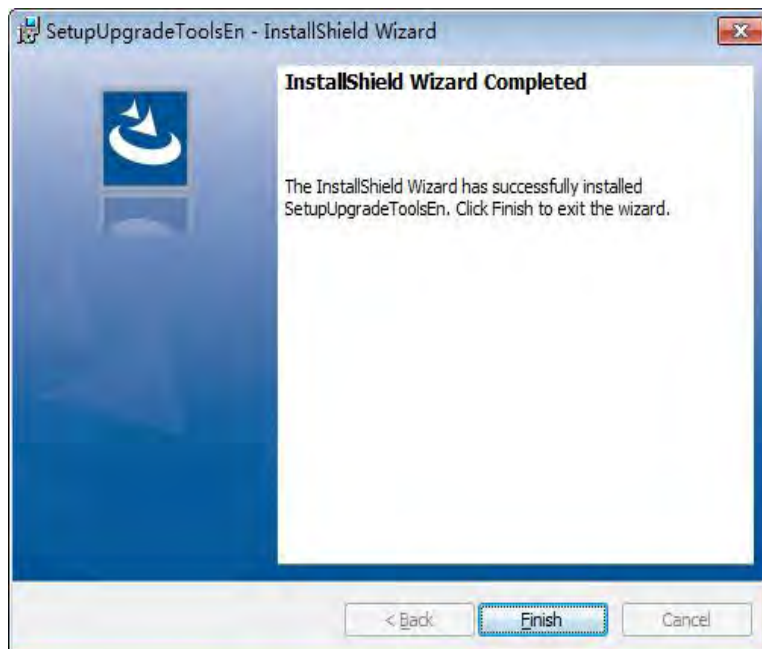
#### Step 2: Click "Next"




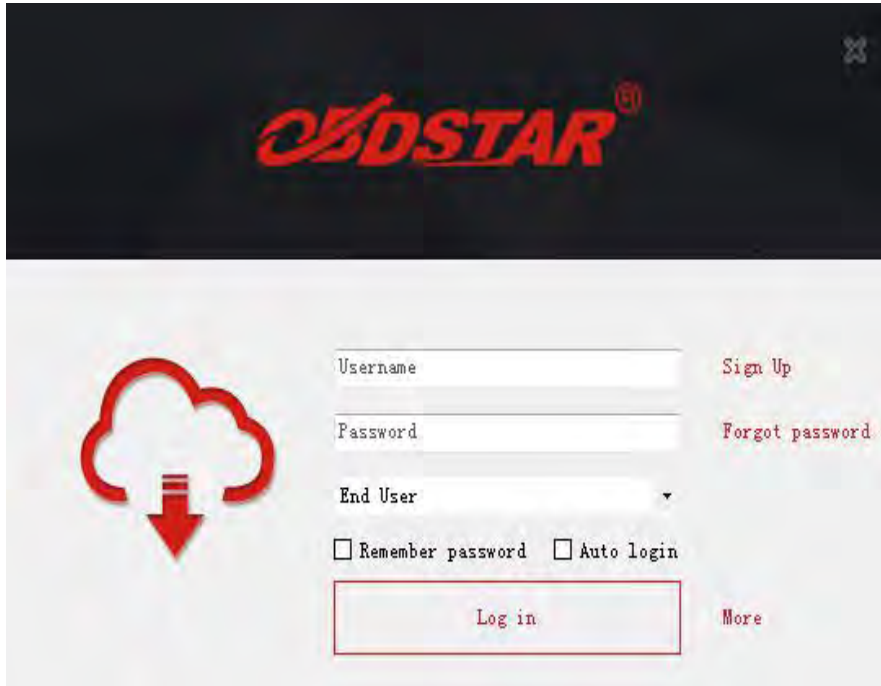
### Step 3: Wait for several minutes then the installation finished



### Step 4: Click "Finish"



After Update Tool installation completed, click the Update Tool software icon  on desktop to start the update tools. The main interface is as shown below:



**OBDSTAR®**

Username  [Sign Up](#)

Password  [Forgot password](#)

End User  ▼

Remember password  Auto login


[More](#)

## 2.2 Register

Click "Sign up" to fill in user information, Username can be English characters or the combination of alphabet and numbers.

Serial number and register password can be referred to System information in the device.( Figure 1.4.3 )

For distributor code, please refer to your distributor for more details.



---

Contact Details:

Tel: 0089 755 86707161

Email: [Leo@obdstar.com](mailto:Leo@obdstar.com)

Skype: obdstar98

Attn: Leo

Registered Types  Product User

Product serial number:  \*

Register password:  \*

Distributor code:  \*

User name:  \*

Your password:  \*

Password:  \*

Email:  \*

Contacts:  \*

Company name:  (unnecessary)

Contact address:  (unnecessary)

Contact phone number:  (unnecessary)

## 2.3 Software updating

### 2.3.1 First method(Upgrade with TF card)

Operation steps as following:

Step 1: Remove the TF card from your device.

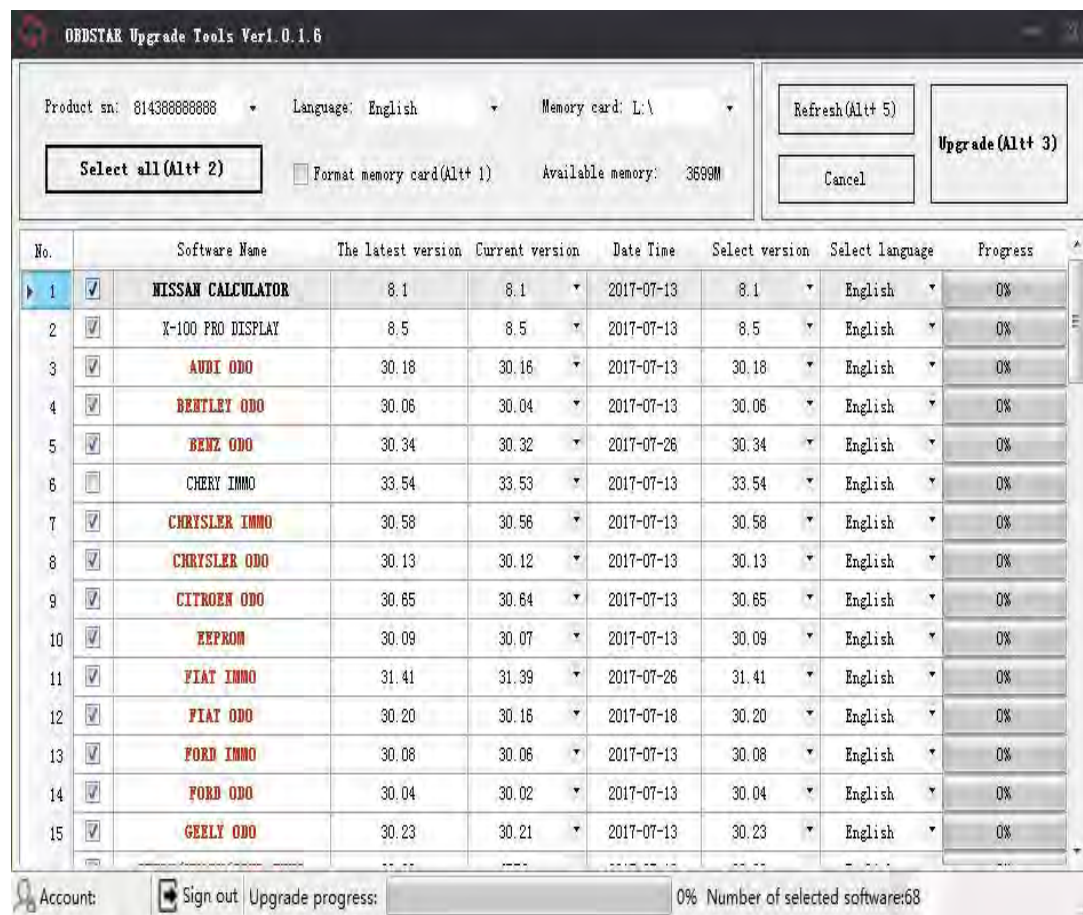
Insert your TF card into computer.

Step 2 : Open update tool and login.

Step 3: Click the source menu, choose the software you want to update, click it and confirm.

Step 4: Click and select all the software then click "update". (Note: It is better to click "Format memory car" during updating.)

Step 5: Wait for several minutes then the updating finished.



### 2.3.2 Second method(Upgrade with USB cable )

Operation steps as following:

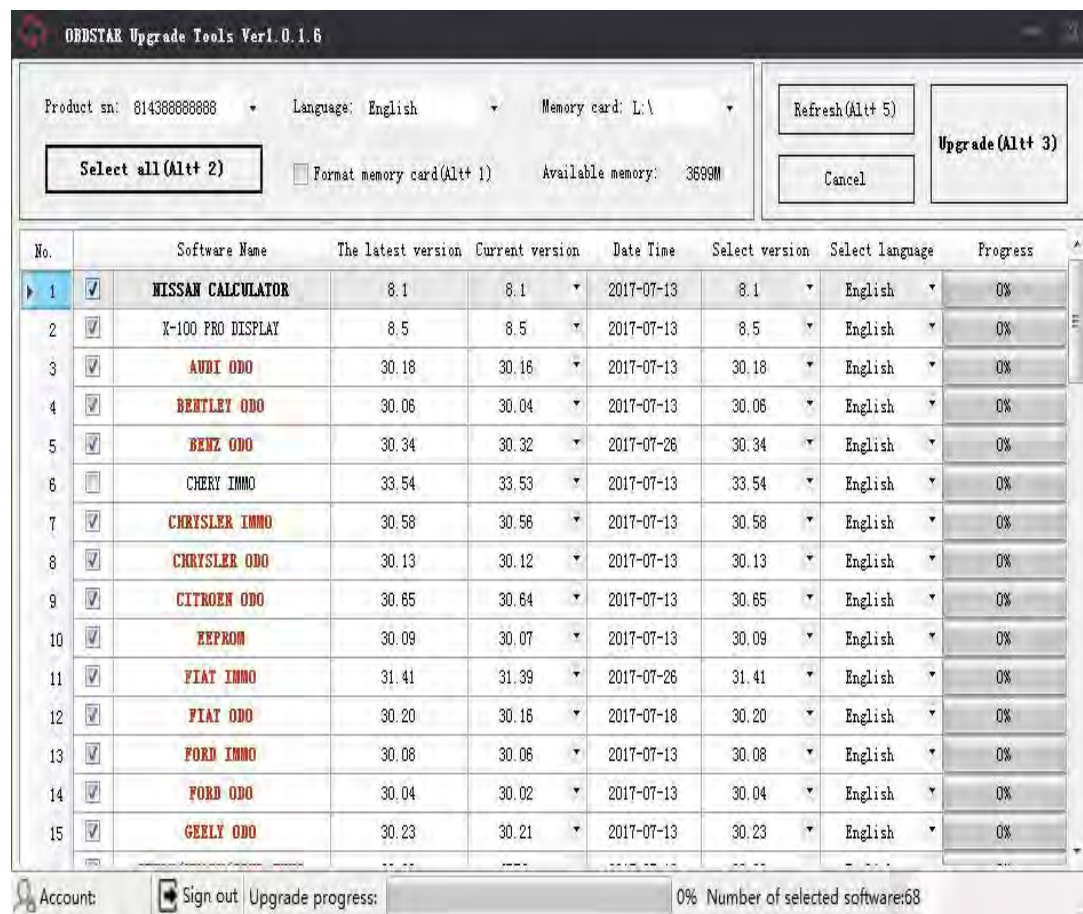
Step 1: The device is connected to the computer via USB

Step 2 : Open update tool and login

Step 3: Click the source menu, choose the program you want to update, click it and confirm.

Step 4: Click and select all the software then click "update".( (Note: It is better to click "Format memory car" during updating.)

Step 5: Wait for several minutes then the updating finished.



**Note :** For new update software and questions during updating, please contact your distributor.