

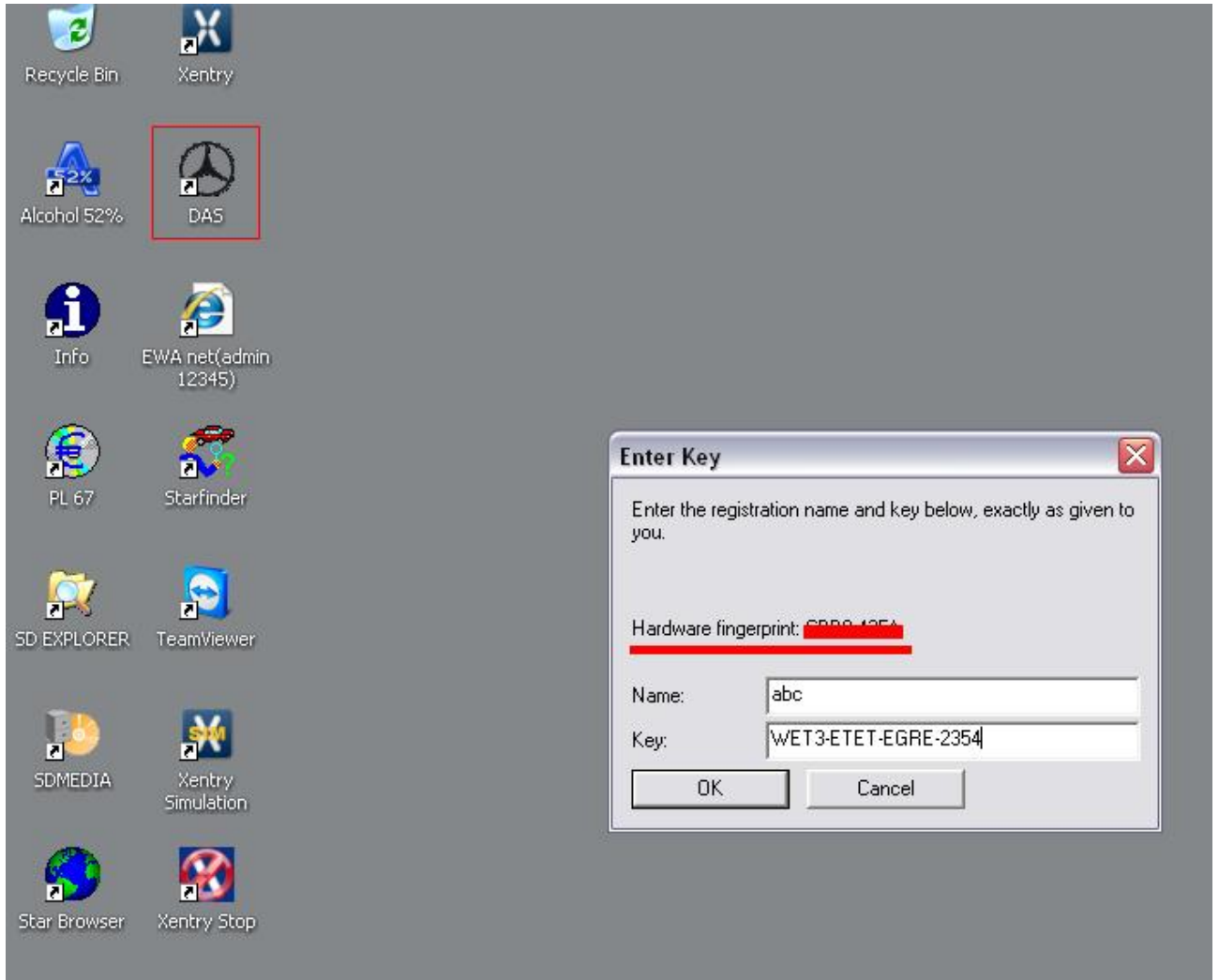
Send to us this

Hardware fingerprint:XXXX-XXXX

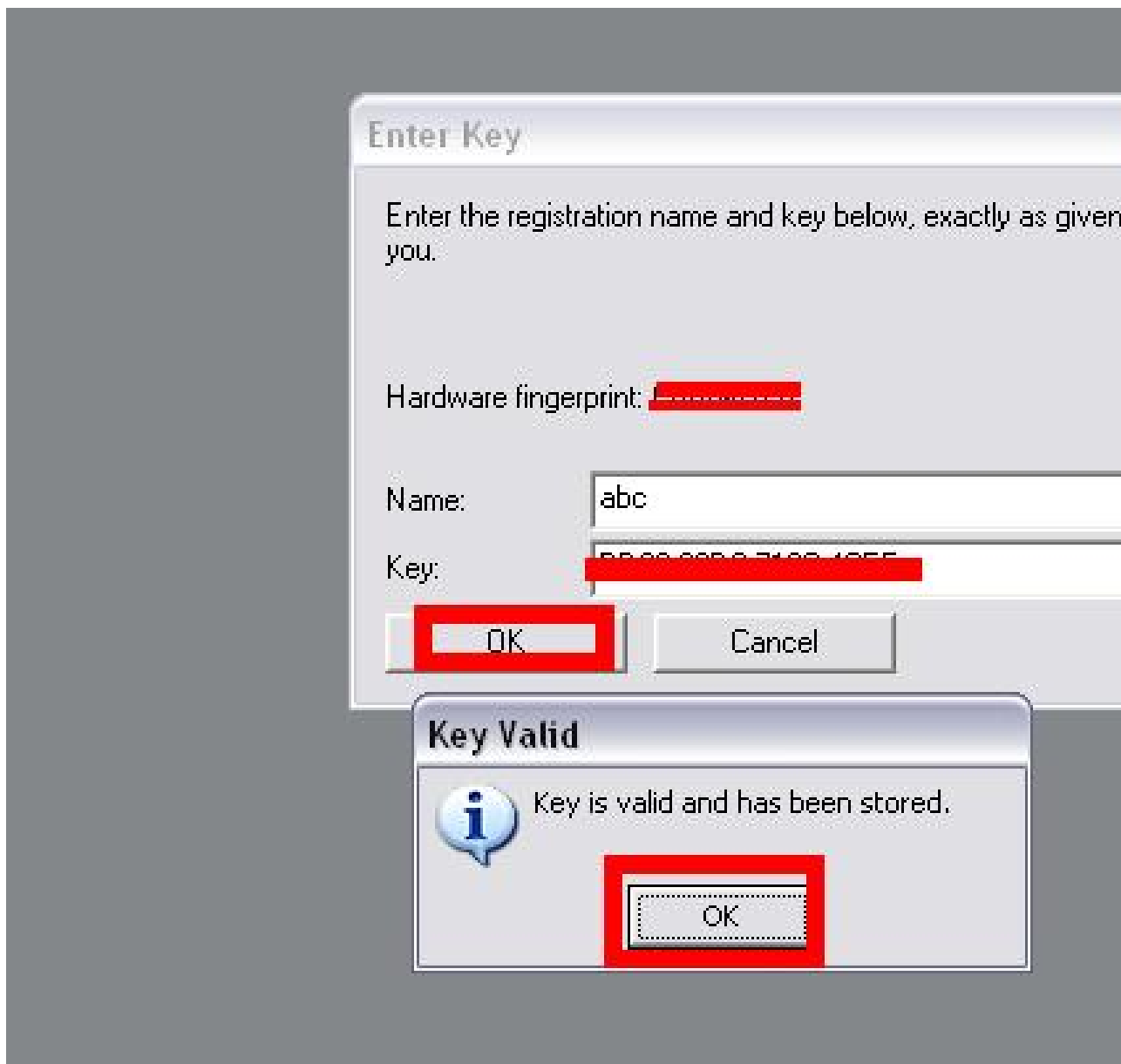
LAN-ID XXXXXXXXXXXXX

HW-ID XXXXXXXXXXXX APPID XXX

DAS



Hardware fingerprint:XXXX-XXXX



EPC WIS

The image shows a Windows desktop environment with a taskbar at the bottom. The desktop background is dark grey. On the left side, there is a vertical column of icons: Recycle Bin, Xentry, Alcohol 52%, DAS, Info, EWA net(admin 12345) (highlighted with a red box), PL 67, Starfinder, SD EXPLORER, TeamViewer, SDMEDIA, Xentry Simulation, Star Browser, Xentry Stop, STAR UTILITIES, and D A S SIM.

The Internet Explorer browser window is titled "EWA login - Windows Internet Explorer". The address bar shows the URL: `http://localhost:9000/EWA-net/Login/trySSO.do`. The browser's Favorites bar is visible, showing a single entry for "EWA login".

The main content area of the browser displays the Mercedes-Benz logo on the left and "EPC, W" on the right. Below this is a green header for "System check" with the following text:

- ✓ Supported version of Java Webstart found.
- ✓ Supported version of Internet Explorer found.
- ✓ Supported version of Windows found.

EPC, WIS/ASRA is completely supported. Additional functionalities are available under Download.

Below the system check, there is a login form with the following fields and buttons:

- User:
- Password:
- Log in button
- Forgot password? button

At the bottom right of the browser window, the text "Server: STAR4371 (127.0.0.1)" is visible.

Server - Windows Internet Explorer

http://localhost:9000/EWA-net/Admin/servermanagement.do;jsessionid=A3B0ADA813F52F0A89C8

Mercedes-Benz EPC, WIS

One of the server access authorizations is invalid. Please check the access authorizations.

Server

- Edit the access authorization
- Show management console
- Back up and restore user database
- Import users, groups, workshops
- Manage parts price list
- Manage notes that are no longer referenced
- Display EPC statistics

Programs

- My profile
 - Basic preferences
 - Advanced preferences
 - Received messages
 - Sent messages
- Administration
 - Server**
 - Workshop
 - Group
 - User

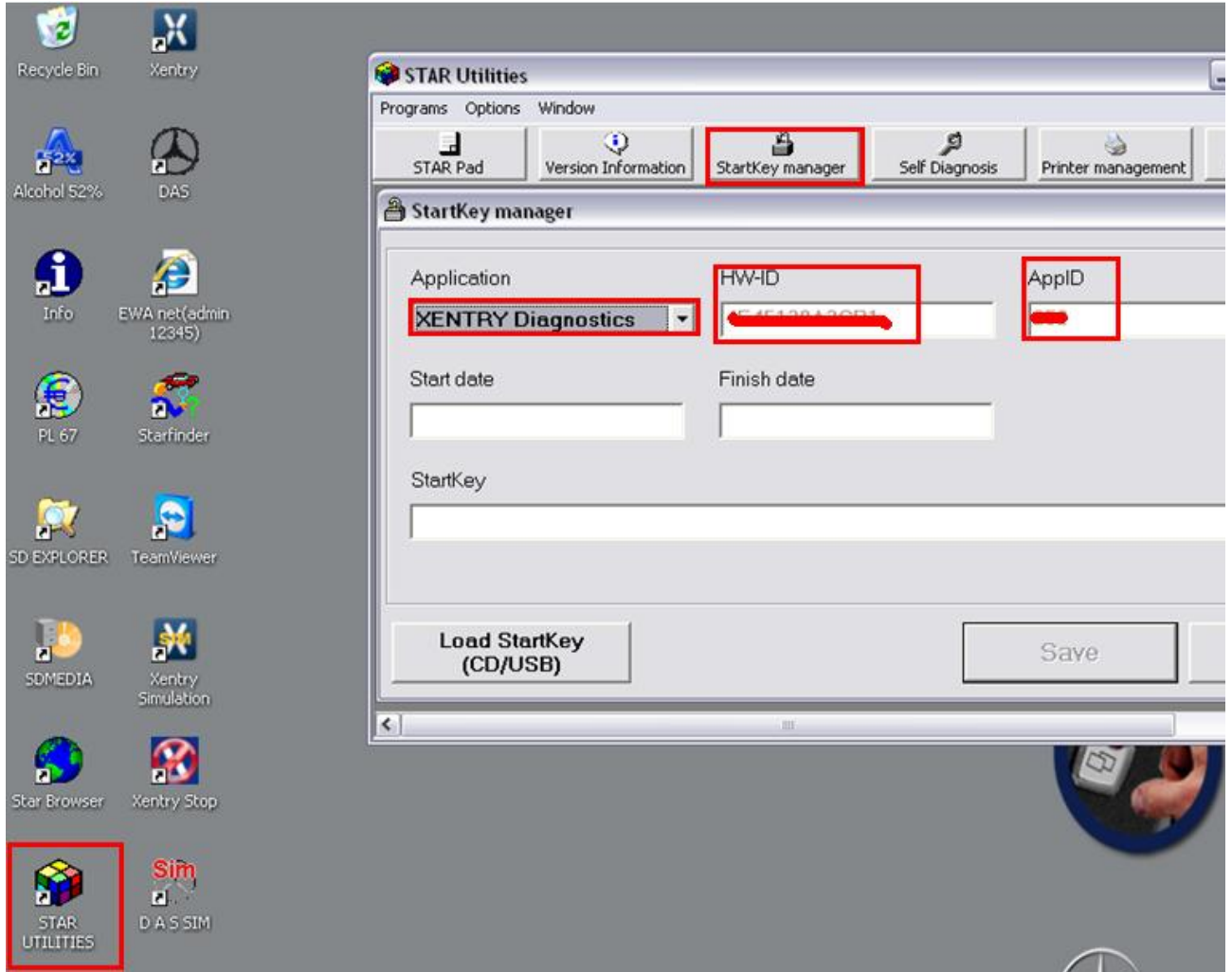
The screenshot shows a Windows desktop environment with a taskbar at the bottom. The desktop background is dark grey. On the left side, there is a Start menu with various icons including Recycle Bin, Xentry, Alcohol 52%, DAS, Info, EWA net(admin 12345), PL 67, Starfinder, SD EXPLORER, TeamViewer, SDMEDIA, Xentry Simulation, Star Browser, Xentry Stop, STAR UTILITIES, and D A S SIM.

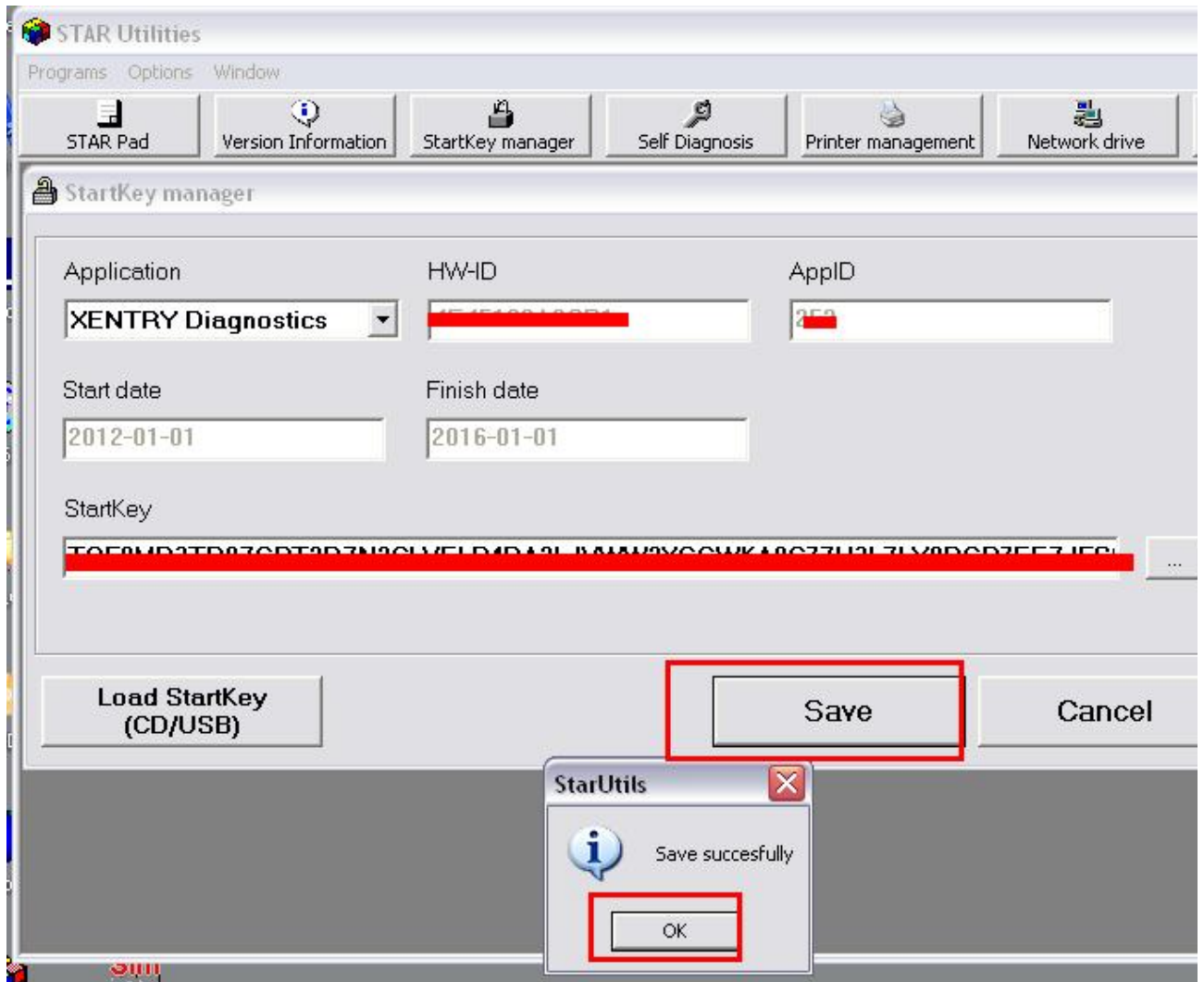
The main window is a Windows Internet Explorer browser titled "Edit the access authorization - Windows Internet Explorer". The address bar shows the URL: <http://localhost:9000/EWA-net/Admin/serverlicense.do;jsessionid=A3B0ADA813F52F0A89C893C769>. The page content includes the Mercedes-Benz logo and a message: "One of the server access authorizations is invalid. Please check the access authorizations."

The page is titled "Edit the access authorization" and contains a form with the following fields:

- Server**
- Edit the access authorization**
- Current MAC address (LAN-ID):** XXXXXXXXXX
- EPC:** [Empty text box]
- StartKey:** [Empty text box]
- Valid:**
- WIS/ASRA:**
- StartKey:** [Empty text box]
- Valid:**

At the bottom right of the form, there are three buttons: "Save", "Reset", and "Cancel". At the bottom of the page, there is a footer: "Welcome: admin | Server: STAR4371 (127.0.0.1) | E".





HW-ID XXXXXXXXXXXX APPID XXX