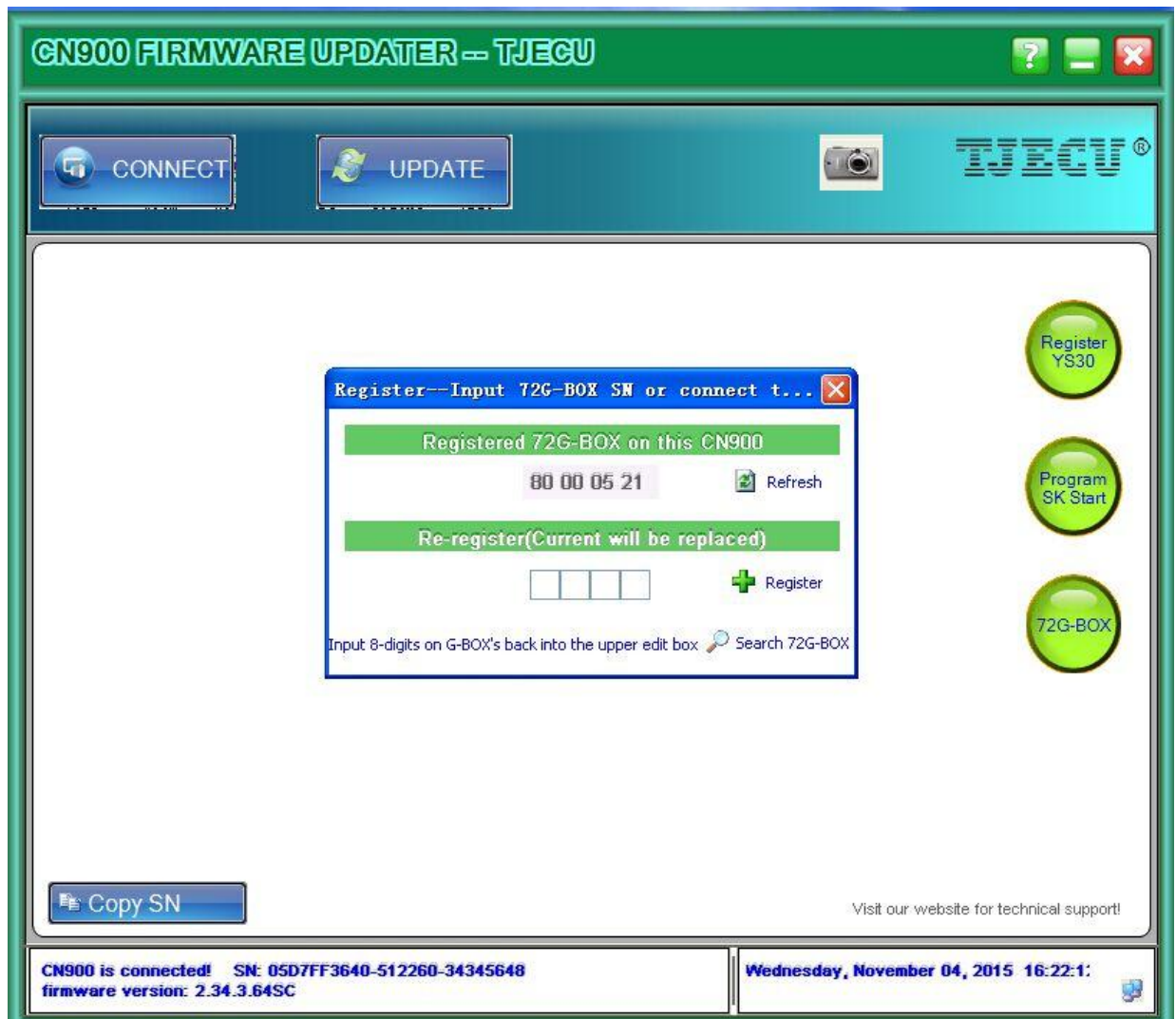
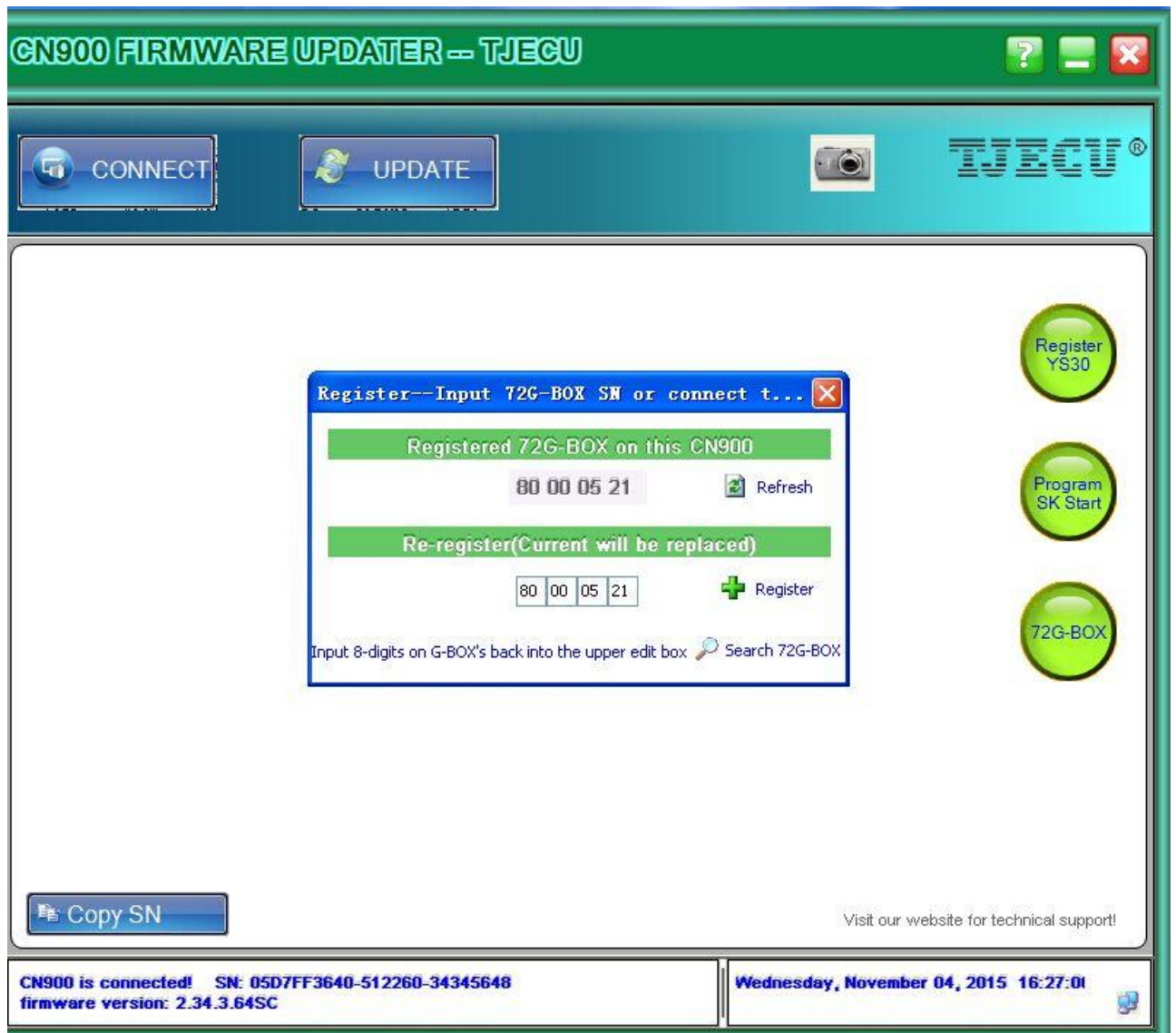



- 1 ,Down CN900 Update Tool
- 2 ,G Box needs to connect with CN900,CN900 should connect with computer.
- 3, Open Update Tool,choose 72G Box, it will find G box serial # automatically, you need to check.



Click + Register

4, If digits are same as below, it means registration is OK now.



5, Click , you can find digits, if they match with each other, that means the device was set well.