

BMW CAS3+ Add Key and All Keys Lost with CGDI BMW

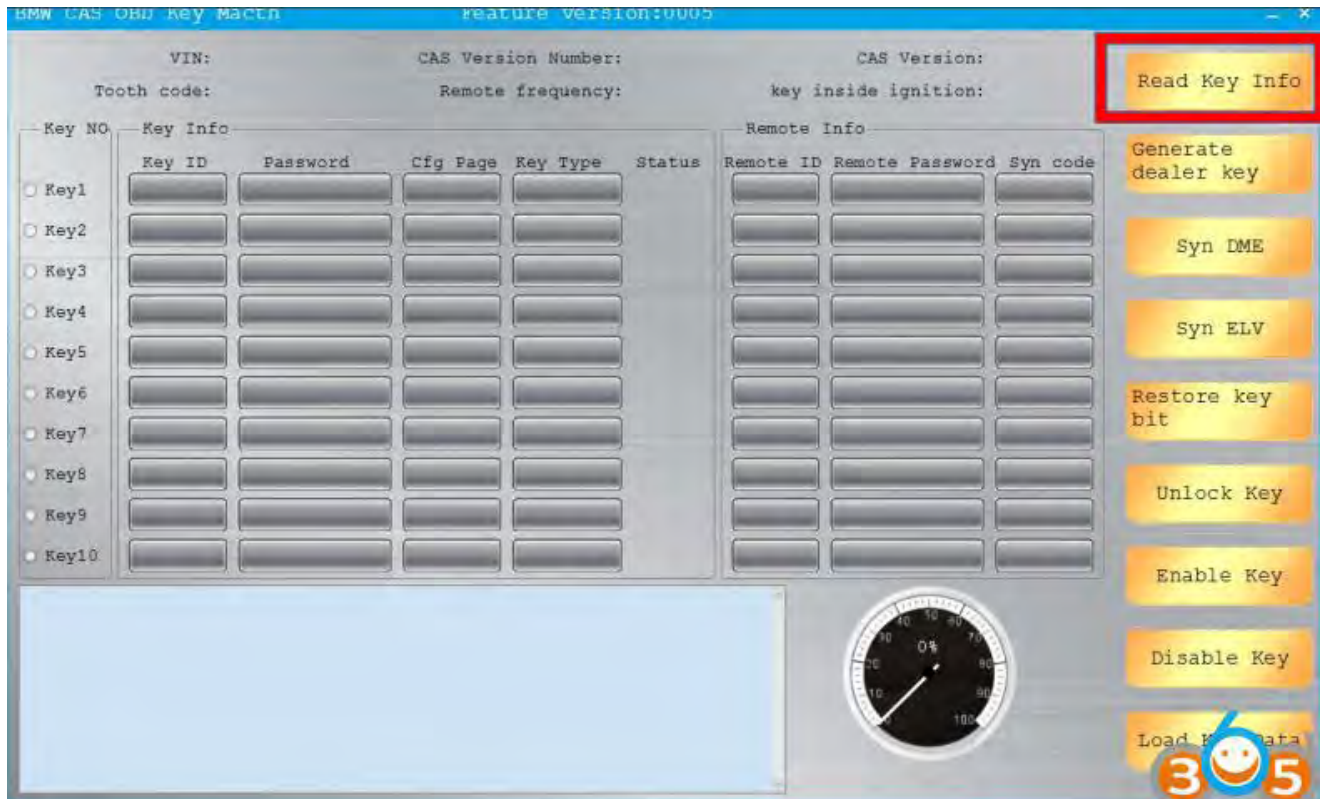
Here's the factory guide on BMW CAS3+ key programming (add key & all keys lost) by using [CGDI Prog BMW key programmer](#).

1.Add key with working key

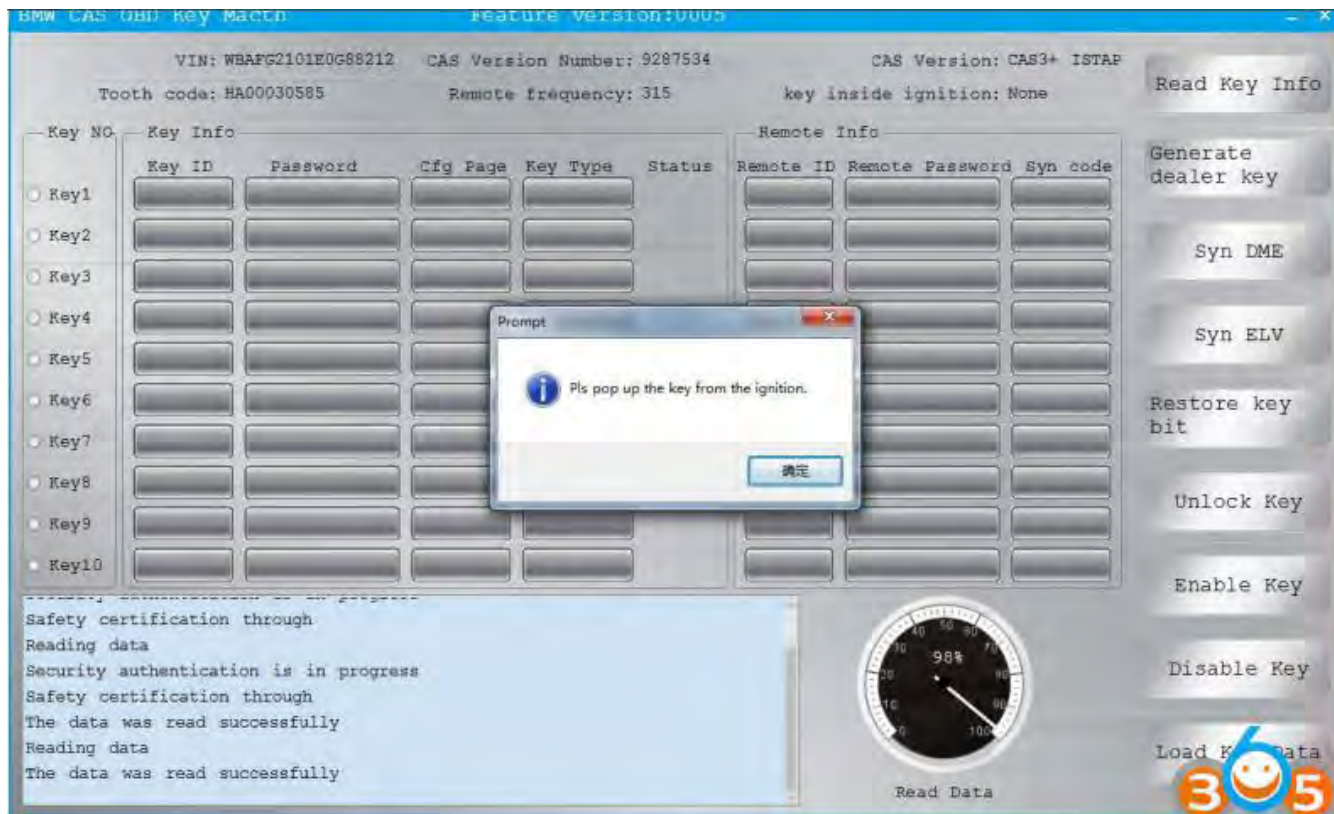


Connect CGDI BMW with vehicle via OBD diagnostic socket

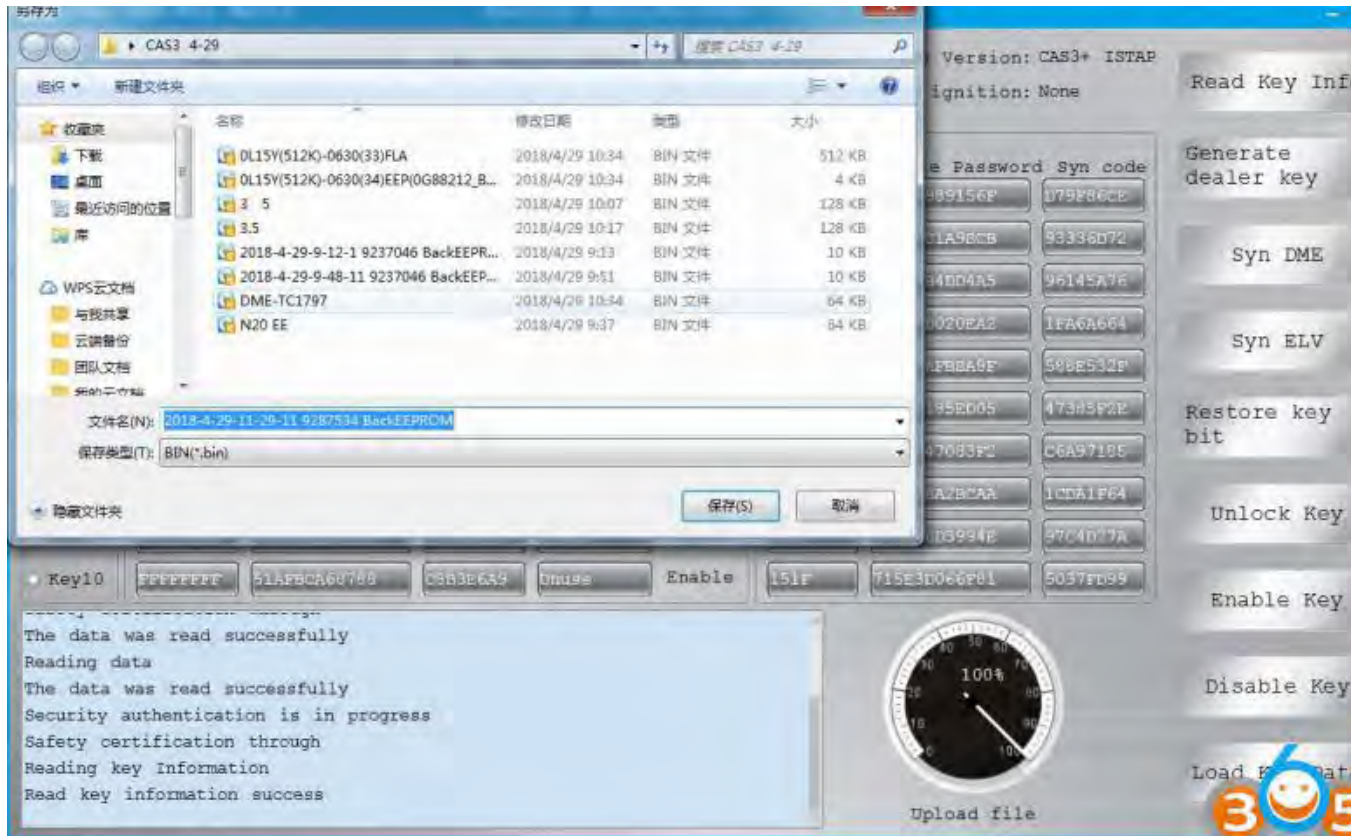
Open cgdi software, select "BMW OBD KEY MATCH"



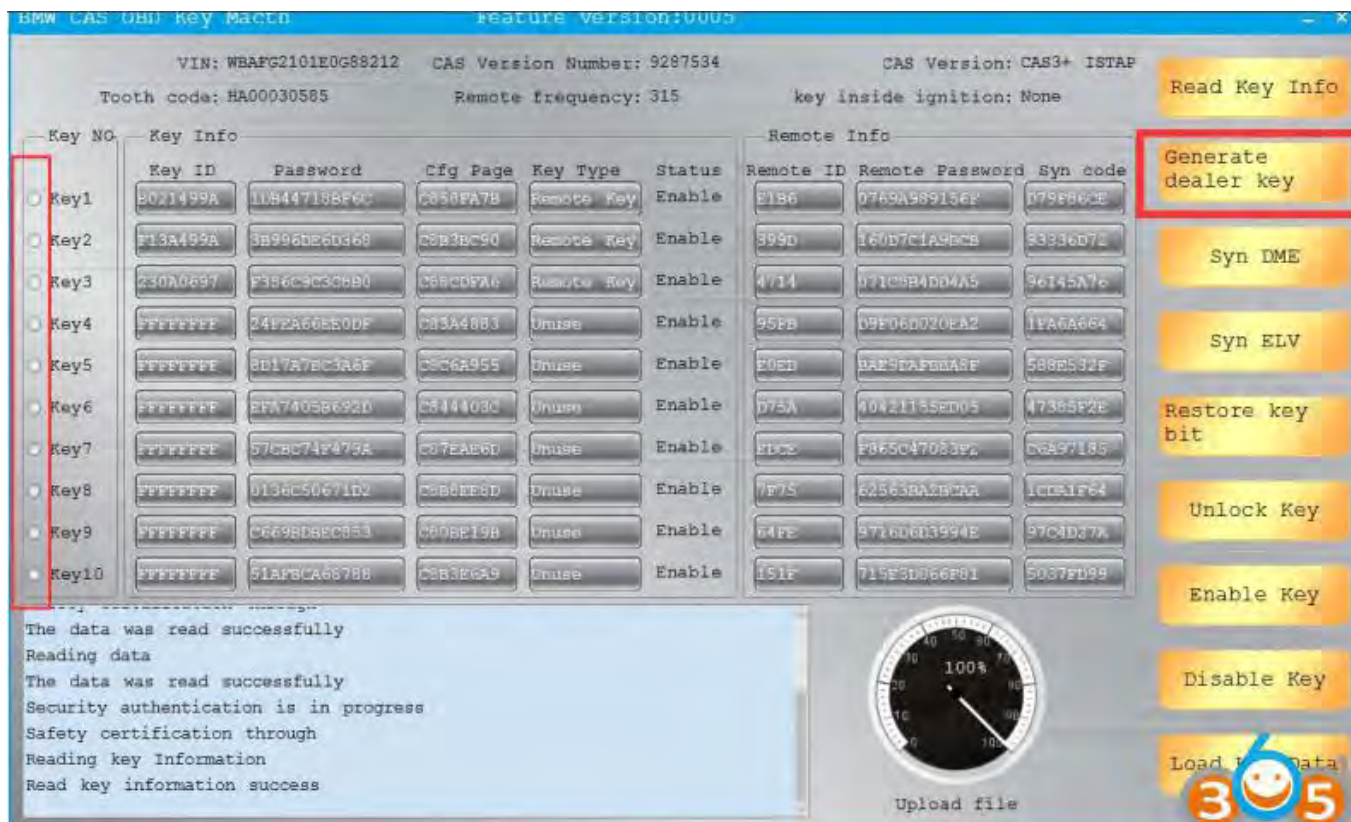
Click ' Read key info '



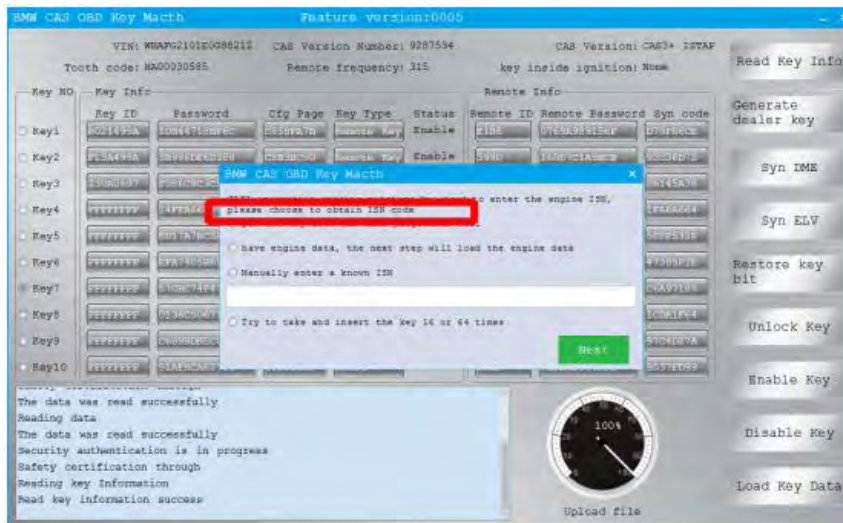
Pls pop up the key from the ignition,the data was read successfully



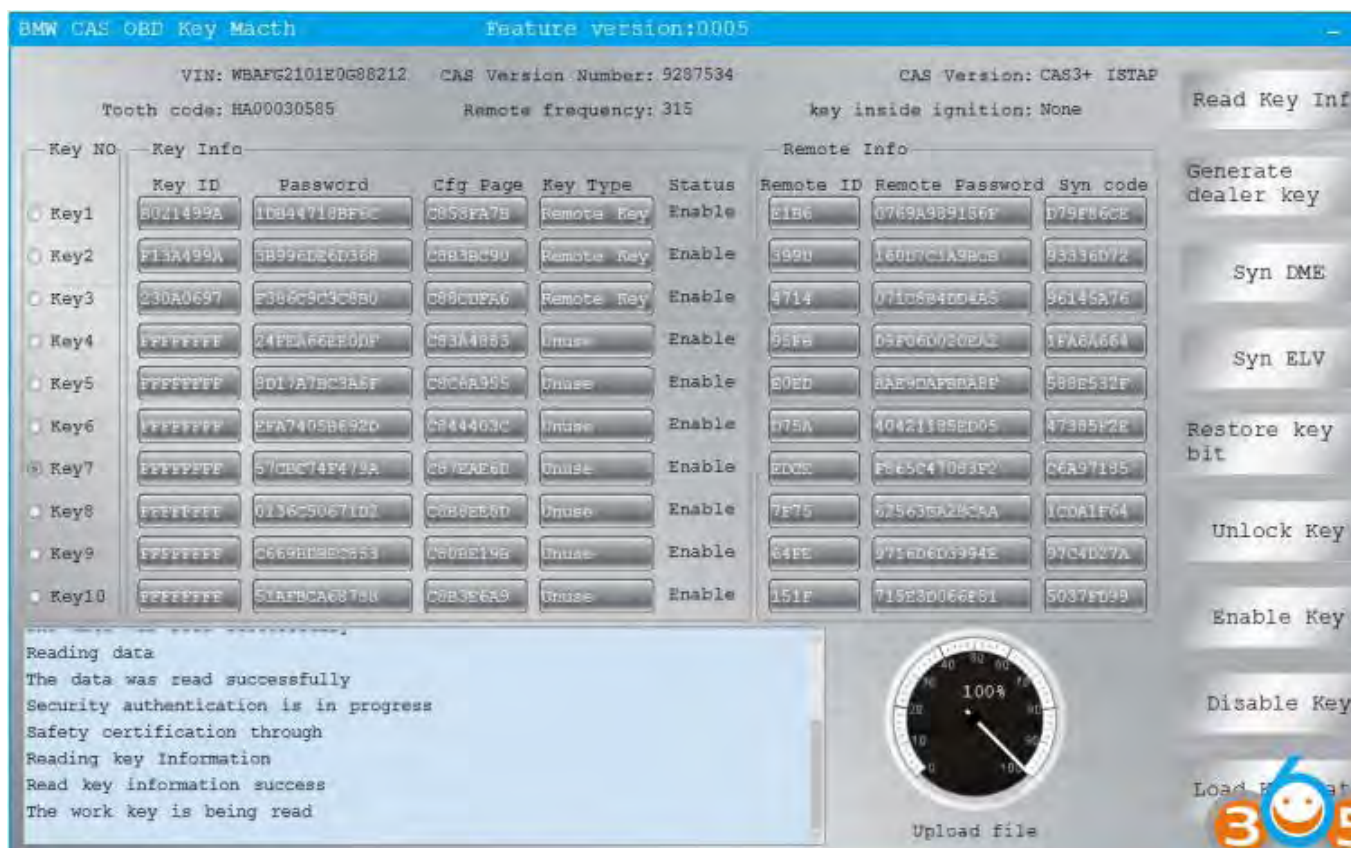
Save the data



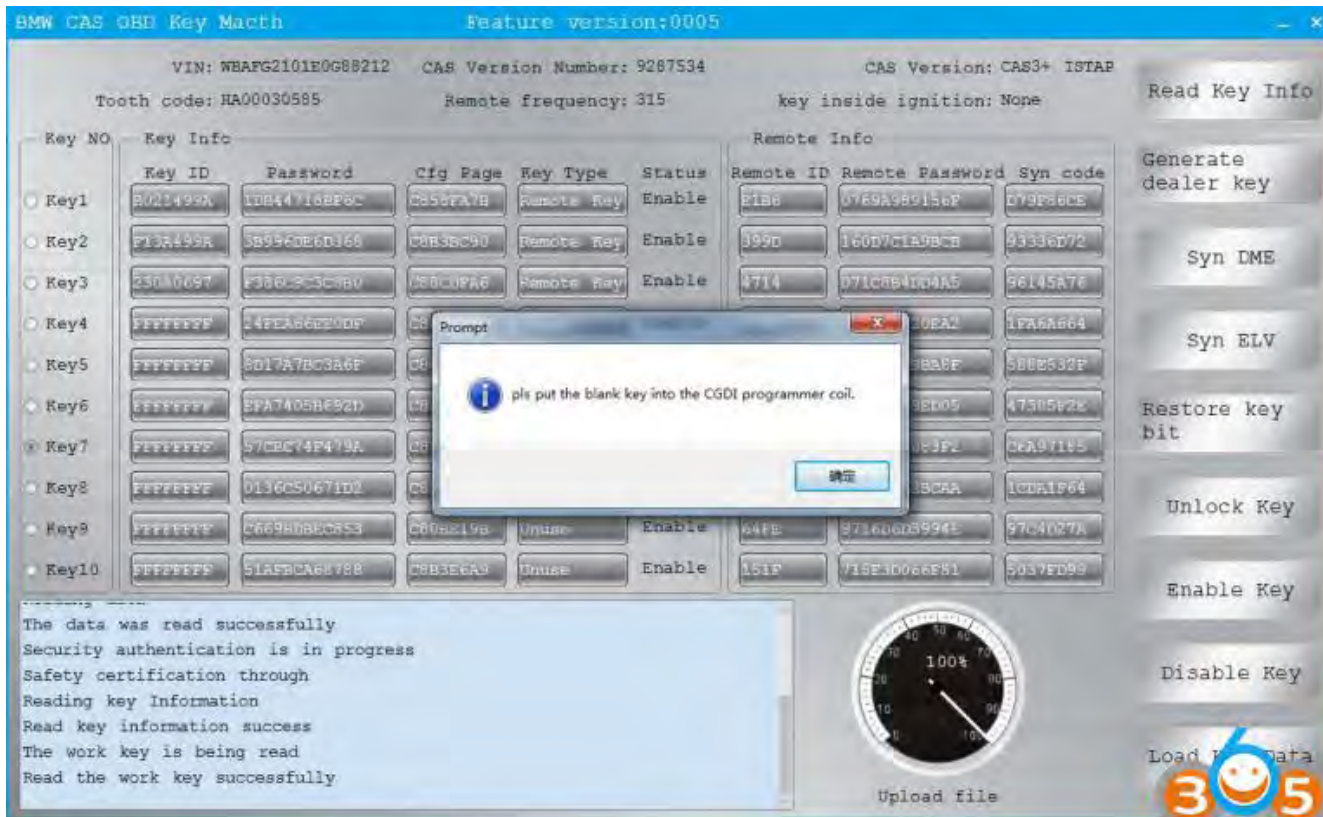
Select the key to program and click to generate the dealer key



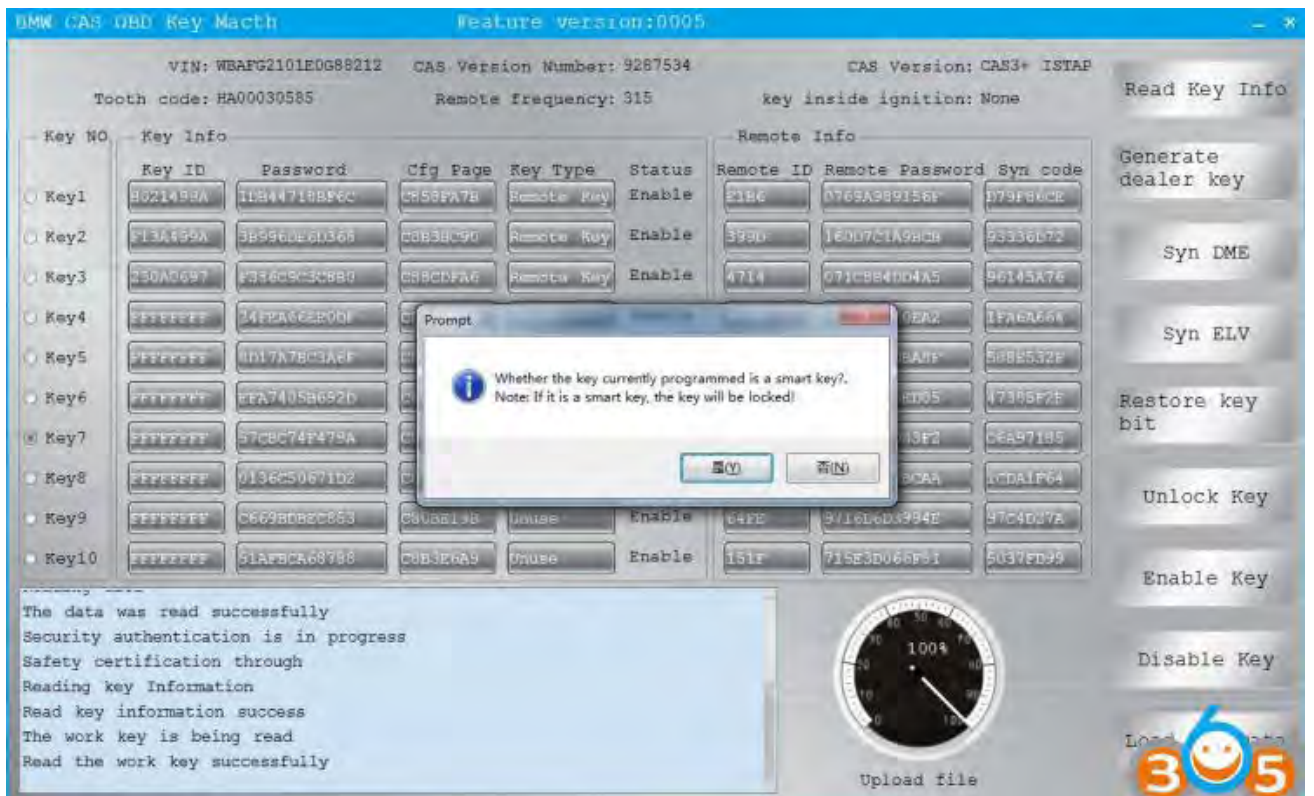
Put the working key into the [CGDI BMW programmer](#) coil



The working key is being read



put the blank key into the CG-DI programmer coil



We choose to program the ordinary key , click ' no '

Note: If the key is a smart key ,it will be locked.

BMW CAS OBD Key Match Feature version:0005

VIN: WBAFG2101E0G88212 CAS Version Number: 9287534 CAS Version: CAS+ ISTAP
Tooth code: HA00030585 Remote frequency: 315 key inside ignition: None

Key NO	Key Info	Remote Info
	Key ID Password Cfg Page Key Type Status	Remote ID Remote Password Syn code
<input type="radio"/> Key1	8021499A 10844718BFGC C856E7A78 Remote Key Enable	E186 0769A989156F 079406CE
<input type="radio"/> Key2	F13A499A 3B99EDEC0368 C8B3BC90 Remote Key Enable	3990 160D7C1A9DCB 93336D72
<input type="radio"/> Key3	230A0697 F386C9C3C8B0 C86C0FA6 Remote Key Enable	4714 071C8B4DD4A5 96145A76
<input type="radio"/> Key4	FFFFFFFF 24FEA66EE0DF C83A4883 Unuse Enable	85F8 D9F0E002CEA7 1FA0A664
<input type="radio"/> Key5	FFFFFFFF 8D17A7BC3A6F C8C6A955 Unuse Enable	E0ED BAE9DAPBBA5F 588E532F
<input type="radio"/> Key6	FFFFFFFF EFA7405B692D C844403C Unuse Enable	D75A 4042185ED05 47385F2E
<input checked="" type="radio"/> Key7	FFFFFFFF 57CBC74F479A C87Ea56D Unuse Enable	8DC6 F065C47083E2 C6A97185
<input type="radio"/> Key8	FFFFFFFF 0130C5067102 C8B8FE80 Unuse Enable	7F75 625638A2B7AA 1C0A1F64
<input type="radio"/> Key9	FFFFFFFF C669BDEBC853 C80BE19B Unuse Enable	64FE 9716DeD3994E 97C4D27A
<input type="radio"/> Key10	FFFFFFFF 51AFDCA68788 C8B3FEA9 Unuse Enable	151F 715E3C066F81 5037ED99

Security authentication is in progress
Safety certification through
Reading key Information
Read key information success
The work key is being read
Read the work key successfully
The key is being programmed

100%

Upload file

Read Key Info
Generate Dealer key
Syn DME
Syn ELV
Restore key bit
Unlock Key
Enable Key
Disable Key
Load Key

Please wait until the key is programmed



Key programming success

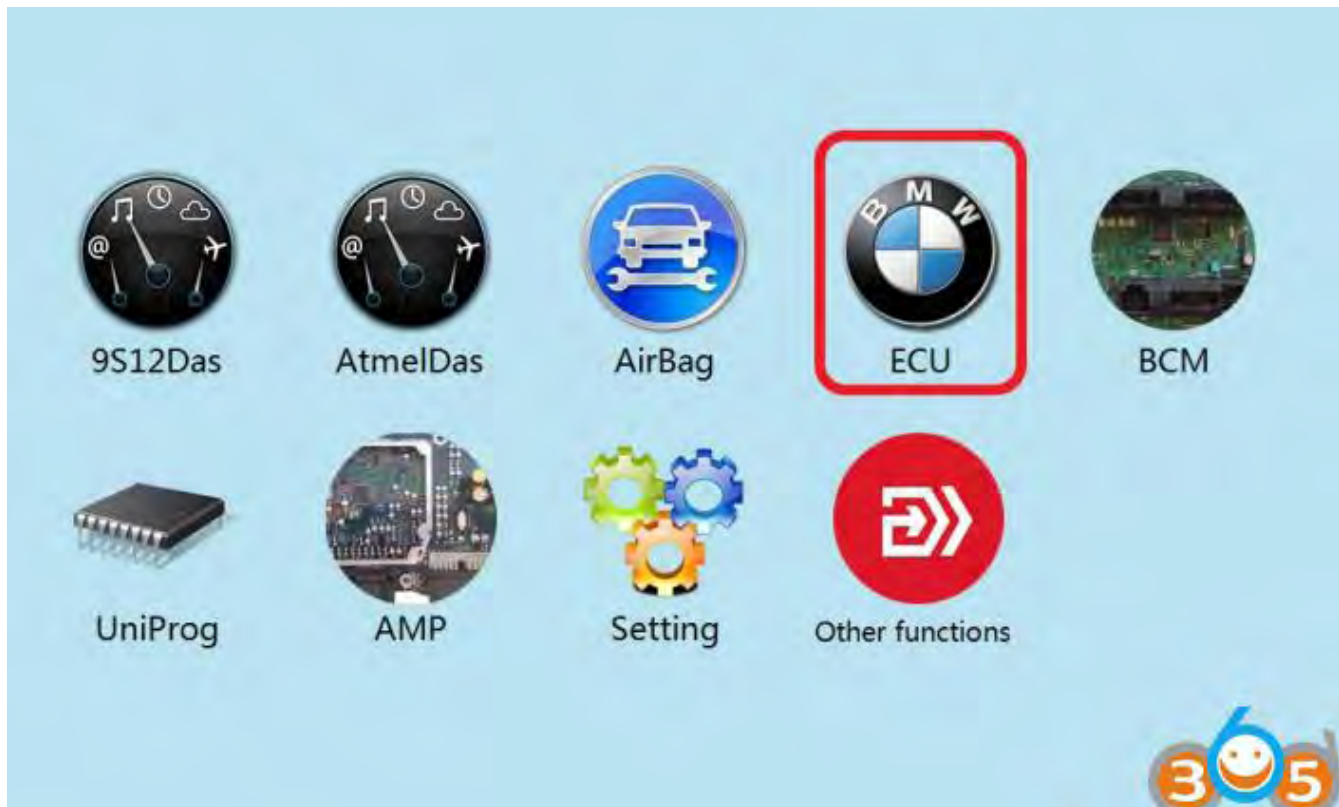
After learning, it can be used normally.

2. Program CAS3+ all keys lost

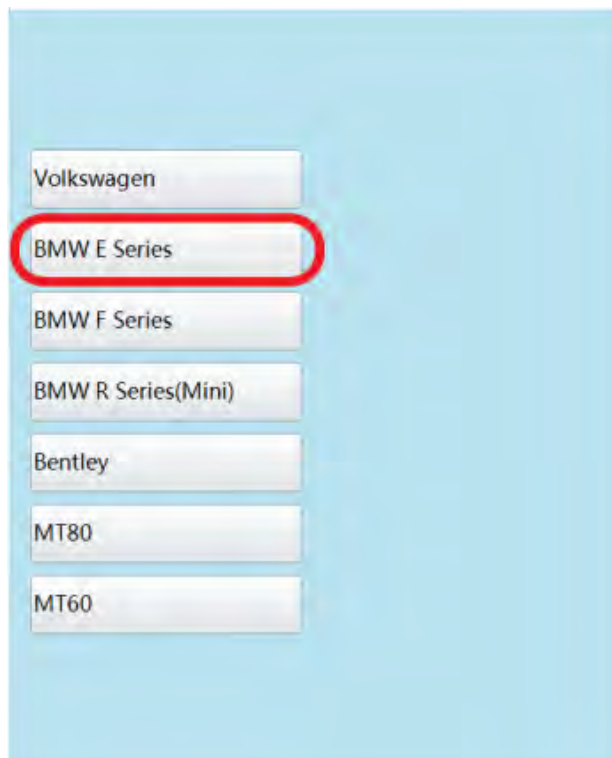
Using [CG100 Prog III](#) to confirm engine model

Read engine computer data (EEPROM)

Note: only with CG-100 full-featured version



Click to enter "ECU"



Click on the engine model option to enter the current vehicle



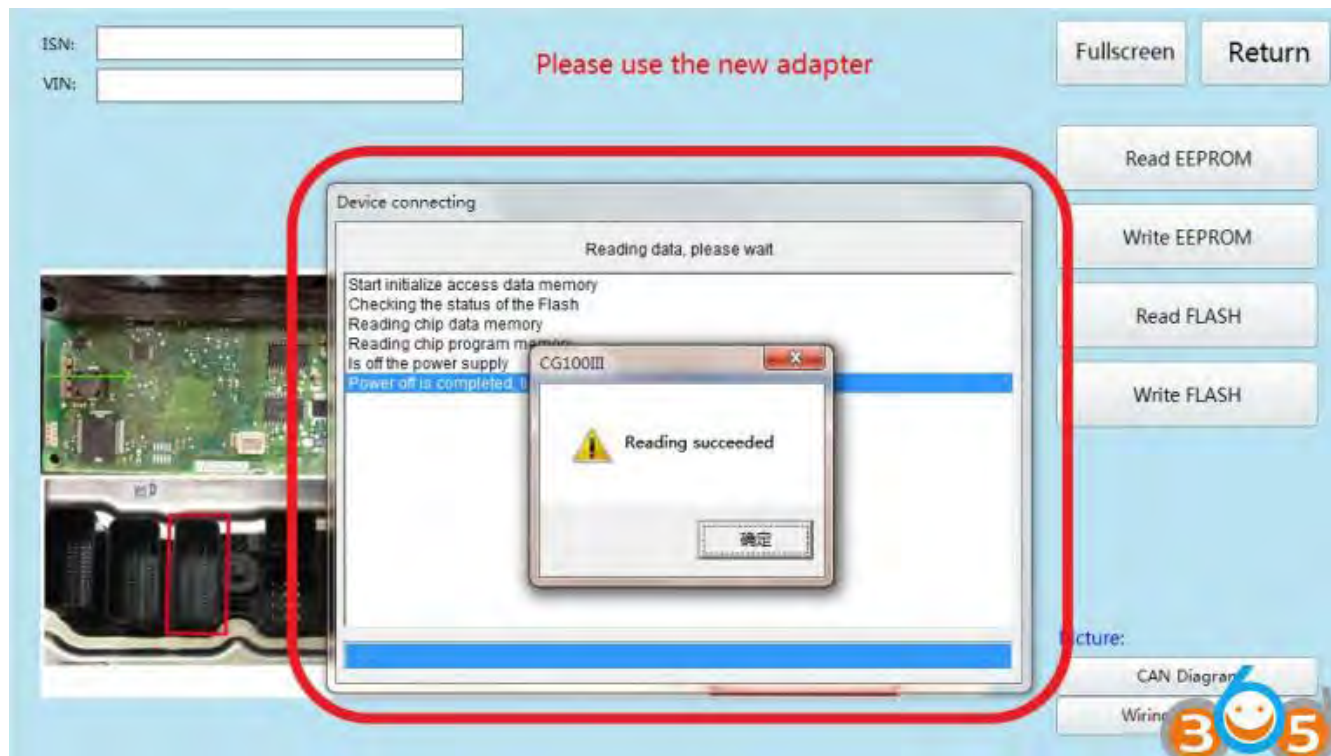
According to the software physical wiring diagram wiring



Engine module wiring



Click read EEPROM



Read successfully and save the data

ISN: 8E76BEDF12DEC25BE3A47A4AEFE254C6
 VIN: SCBFN63W1EC094039

Please use the new adapter

Fullscreen Return

Read EEPROM
 Write EEPROM
 Read FLASH
 Write FLASH

Picture:
 CAN Diagram
 Wiring Diagram 1

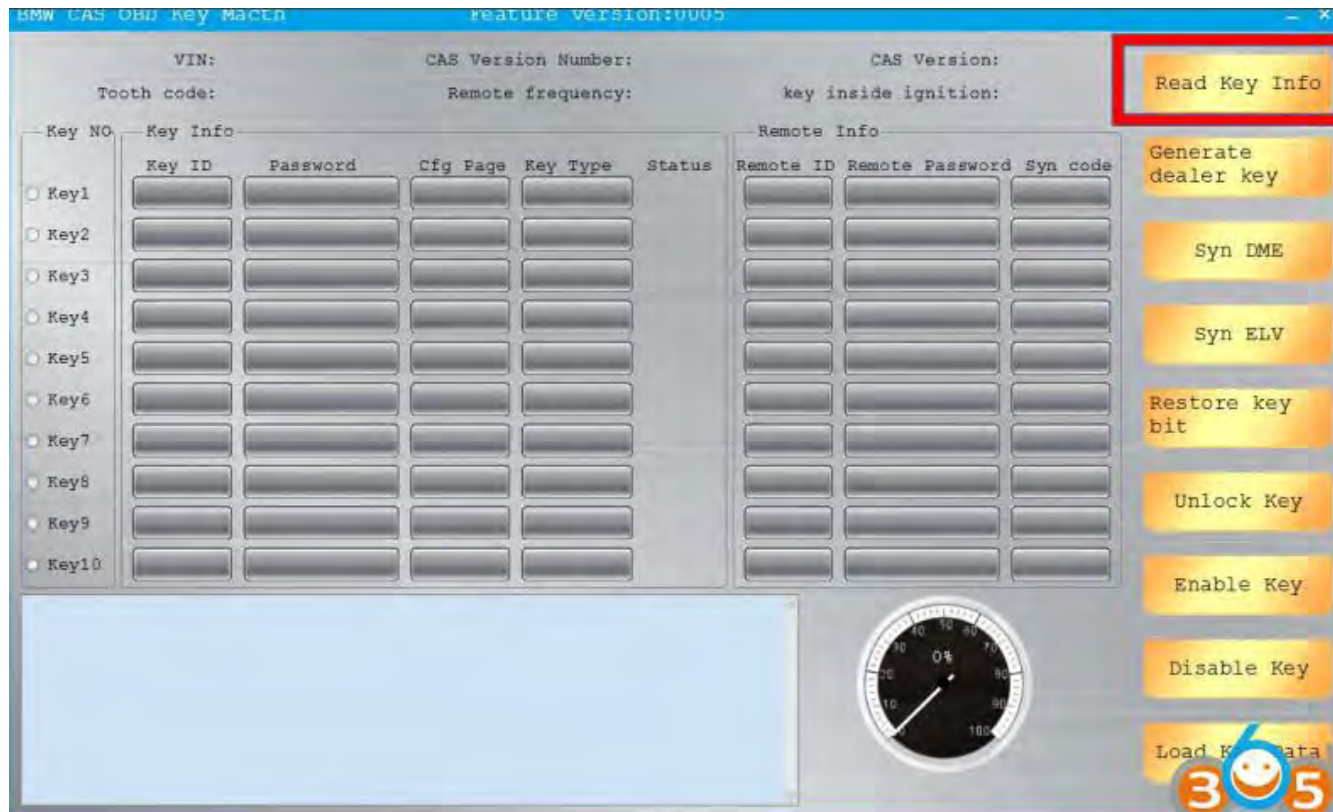
Show ISN and VIN

CGDI Device activation time remaining 3 days

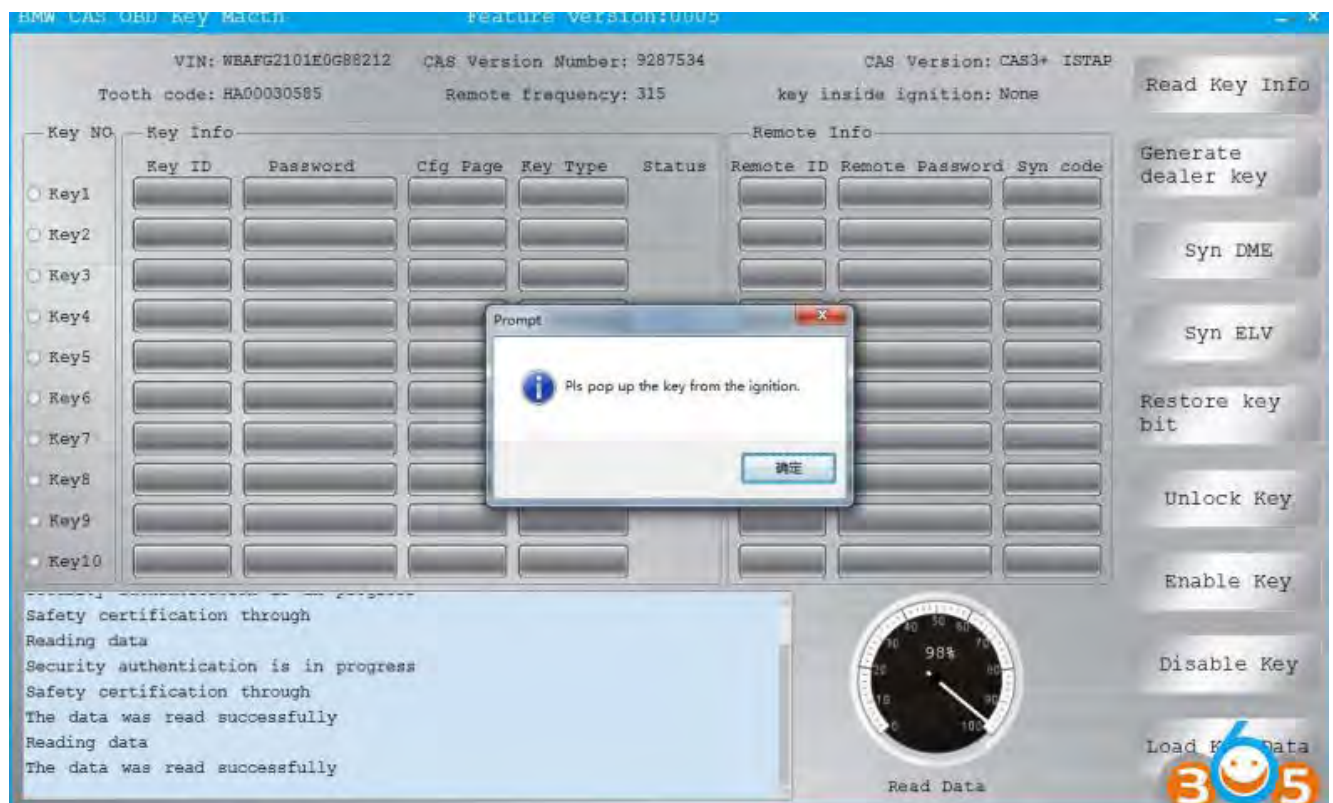
BMW OBD Key Match	CAS3 Key Match	BMW ISN
FEM/BDC Key Match	CAS4 Key Match	BMW Enable/Disable key
BMW F Series Program	BMW F Series Coding	EGS IS

Connect CGDI BMW with vehicle via OBD socket

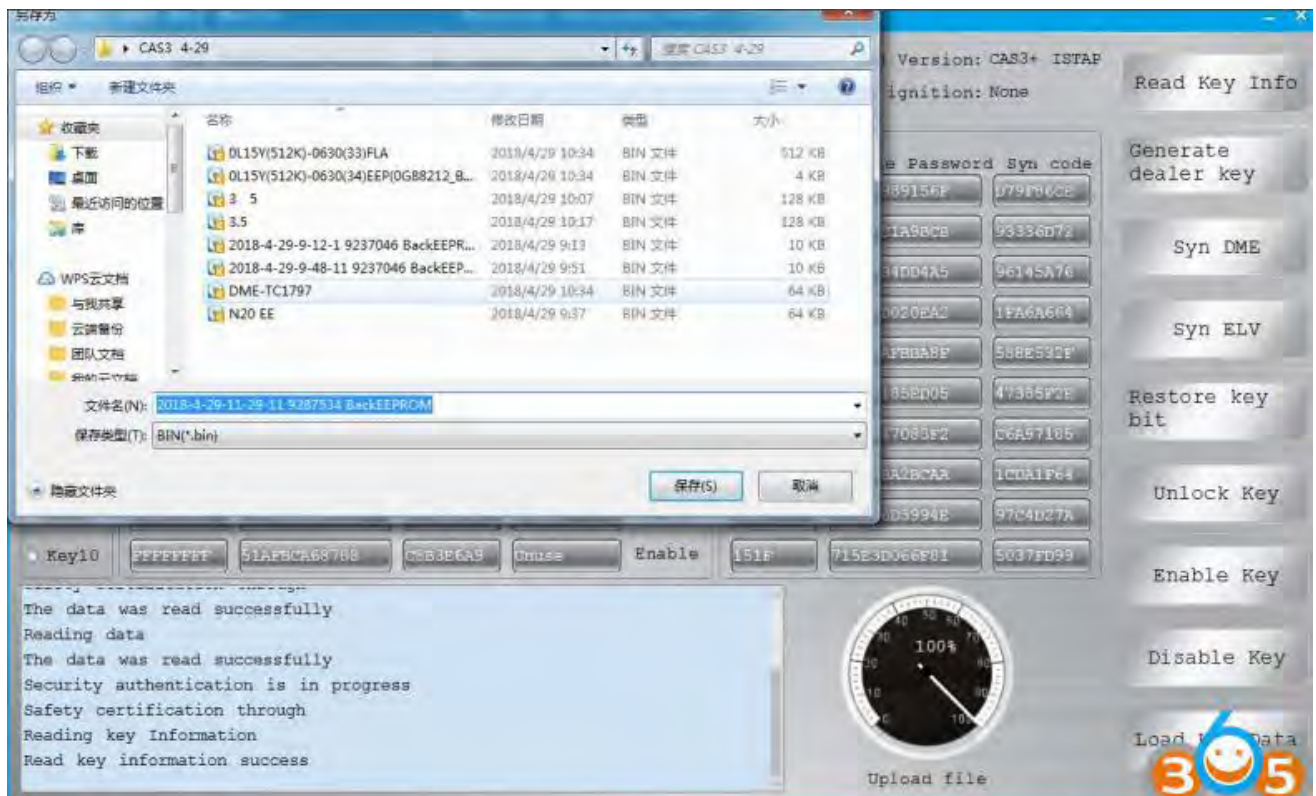
Click on the "BMW OBd KEY MATCH"



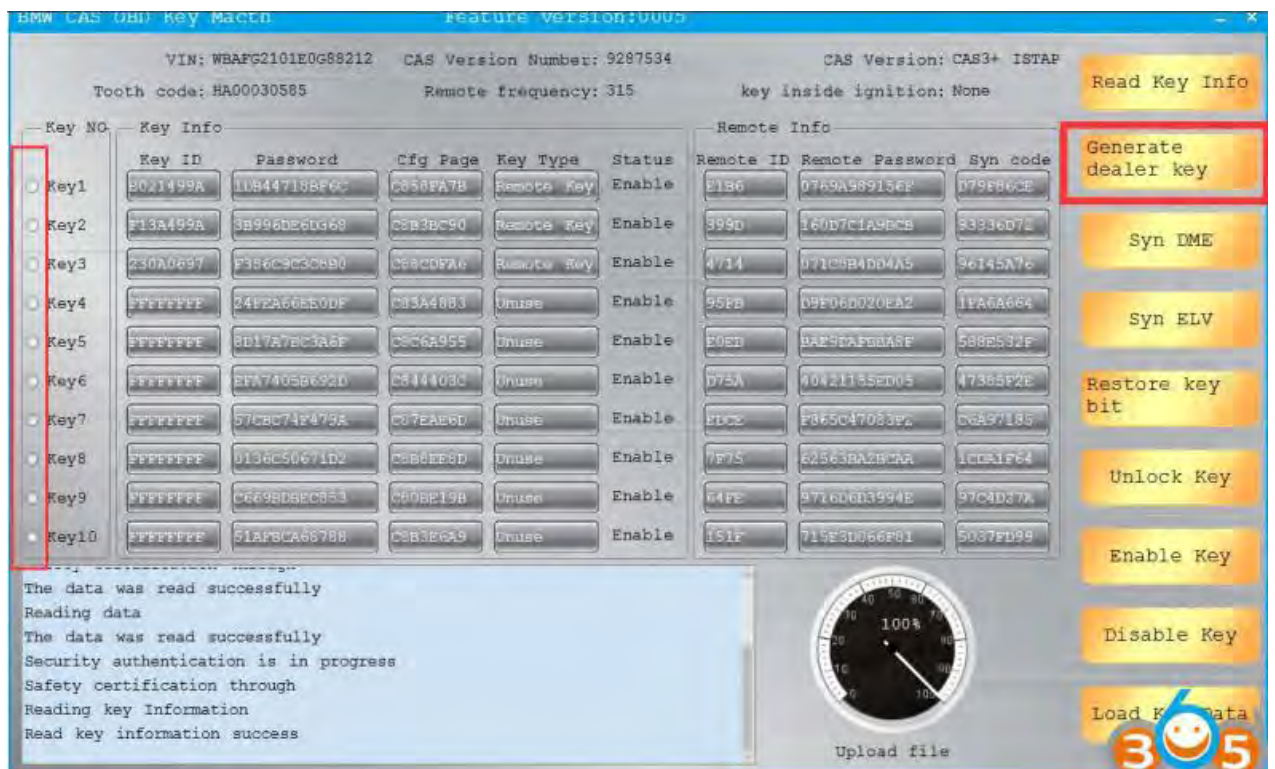
Click read key info



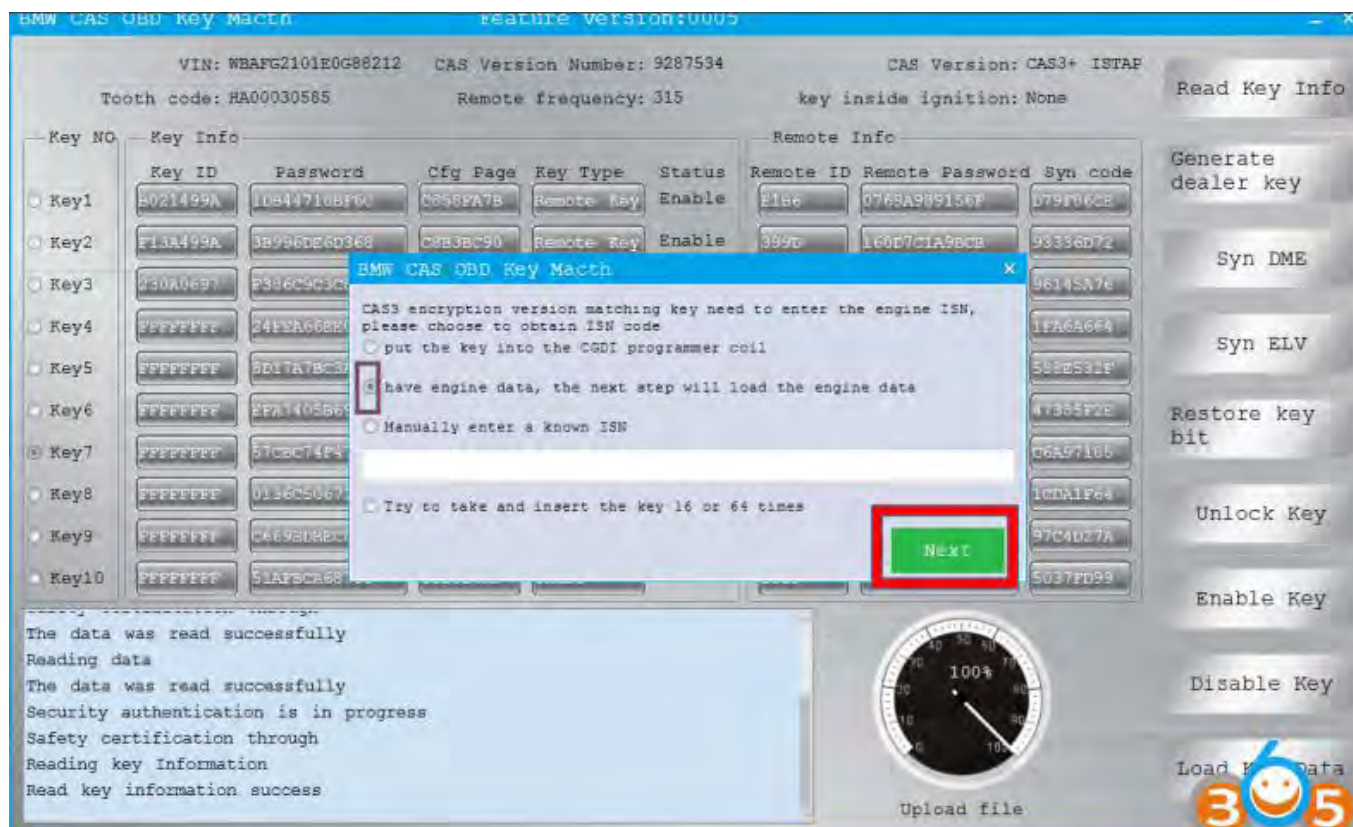
Pls pop up the key from the ignition, the data was read successfully



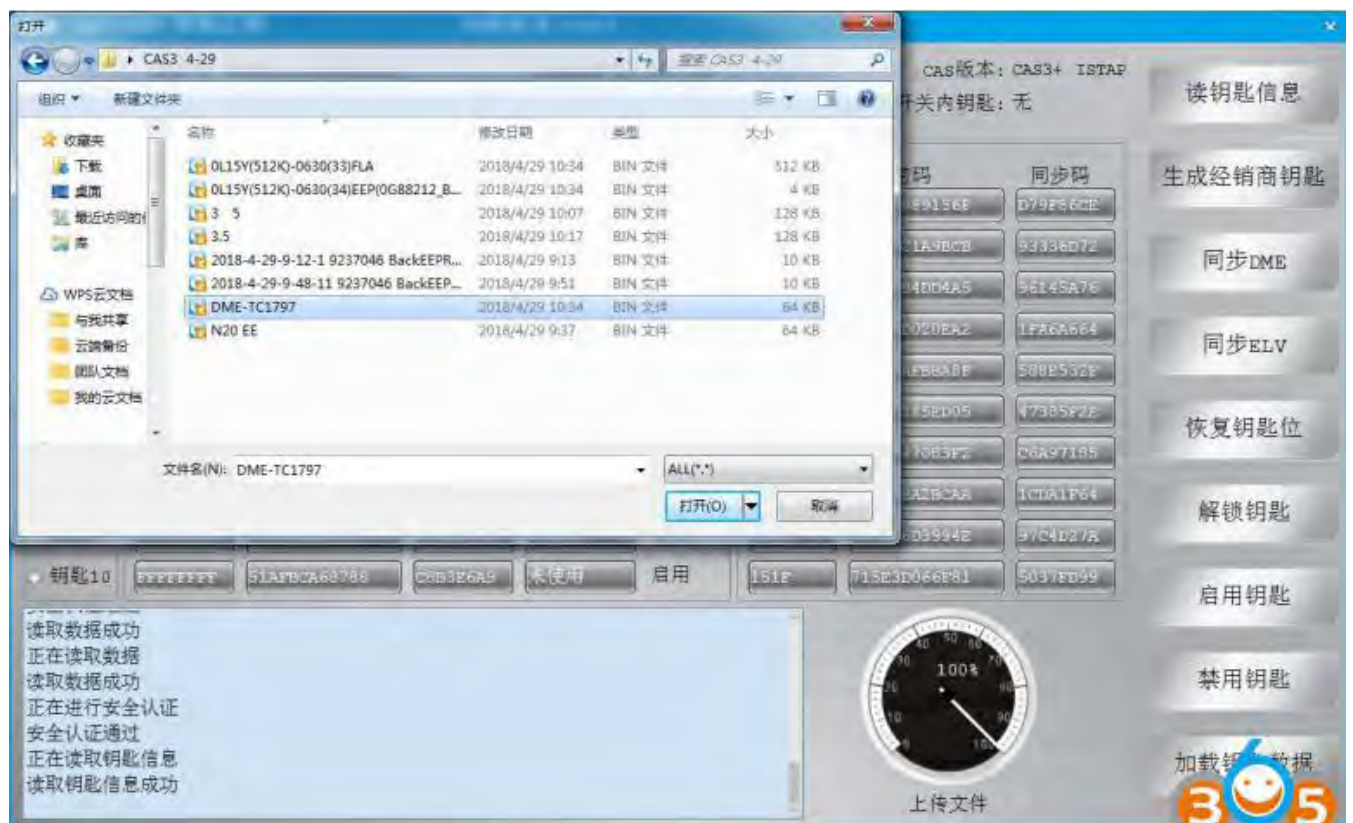
Save the data



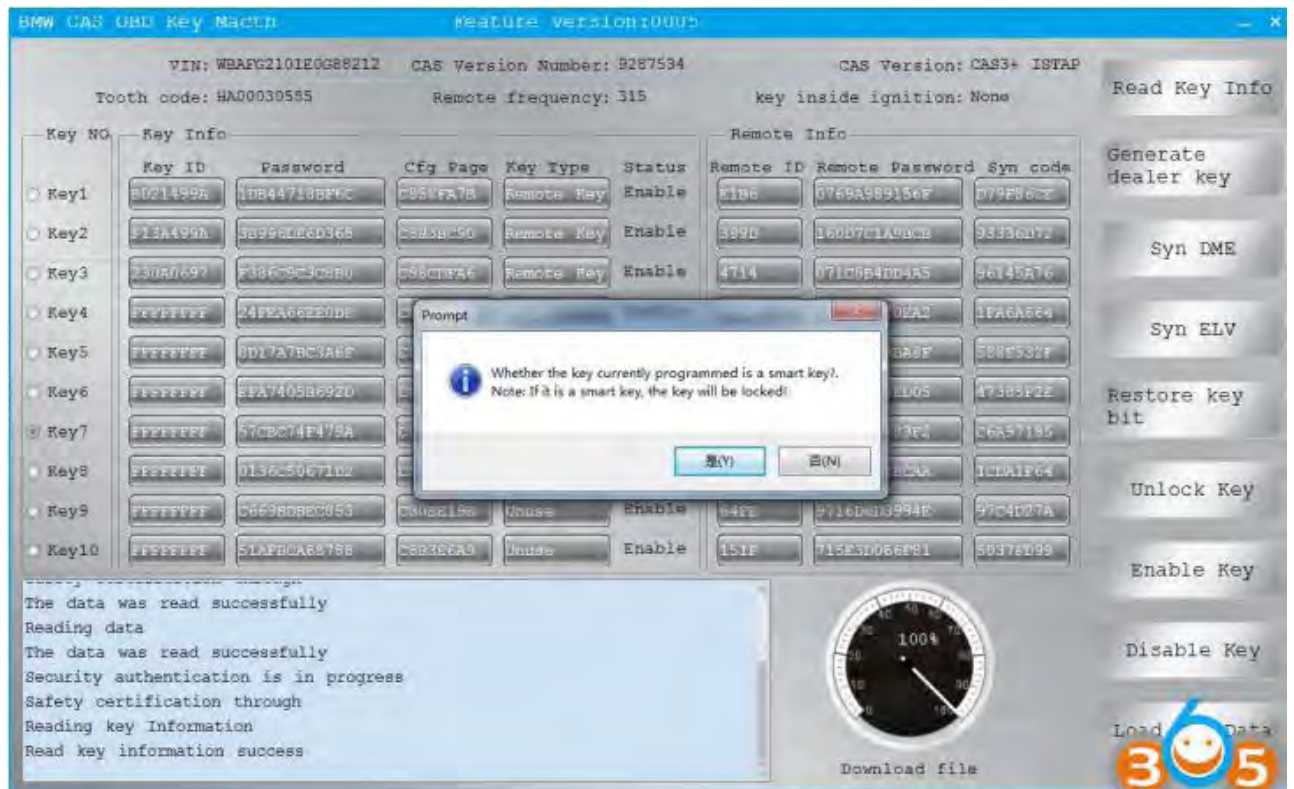
Select the key to program and click to generate the dealer key



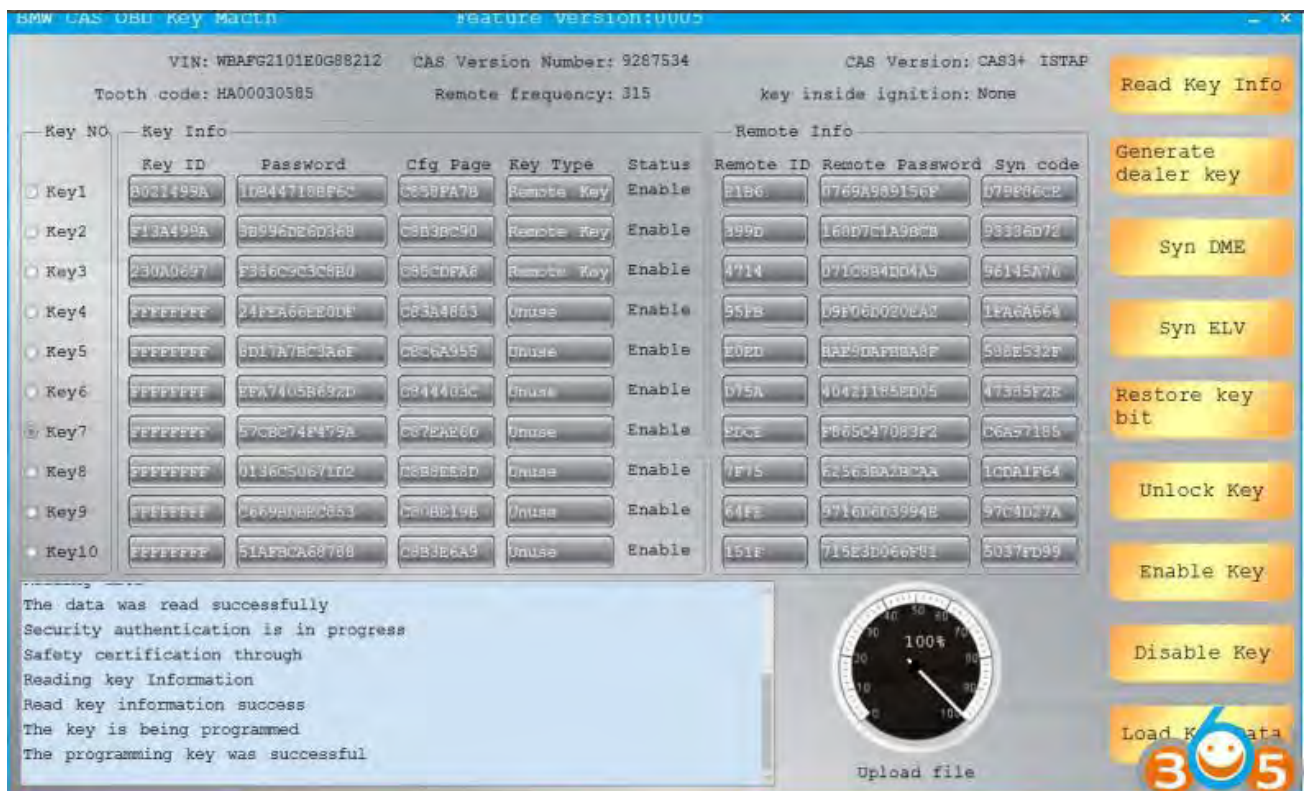
Select the engine data, next load the engine data



Open the engine computer data that was read before



Pls put the blank key into the CG-DI Programmer coil



We choose the ordinary key to program

Note: the smart key will lock the key to unlock the key.



Key programming success.

After learning, it can be used normally.

www.obdii365.com