

HONDA HDS Installation Guide



X-Horse Electronics Co., Ltd.

www.obd365.com

Table of Contents

1. Install HONDA HDS.....	3
2. Install MVCI Driver.....	7

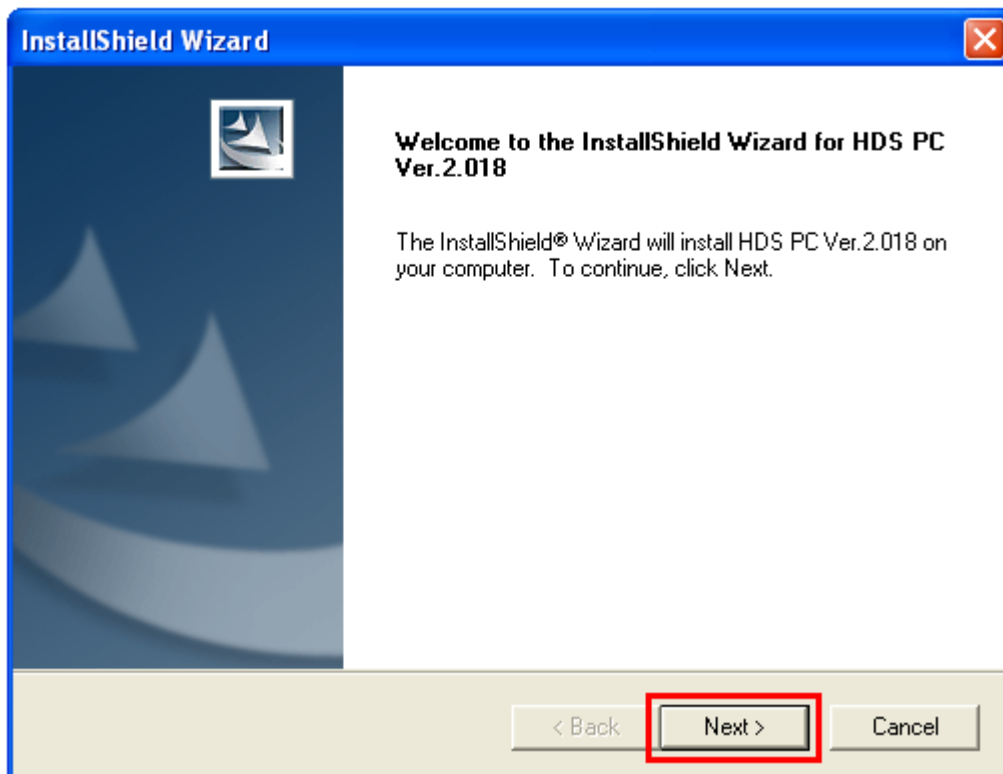
1. Install HONDA HDS

- Double-click Setup to start installation

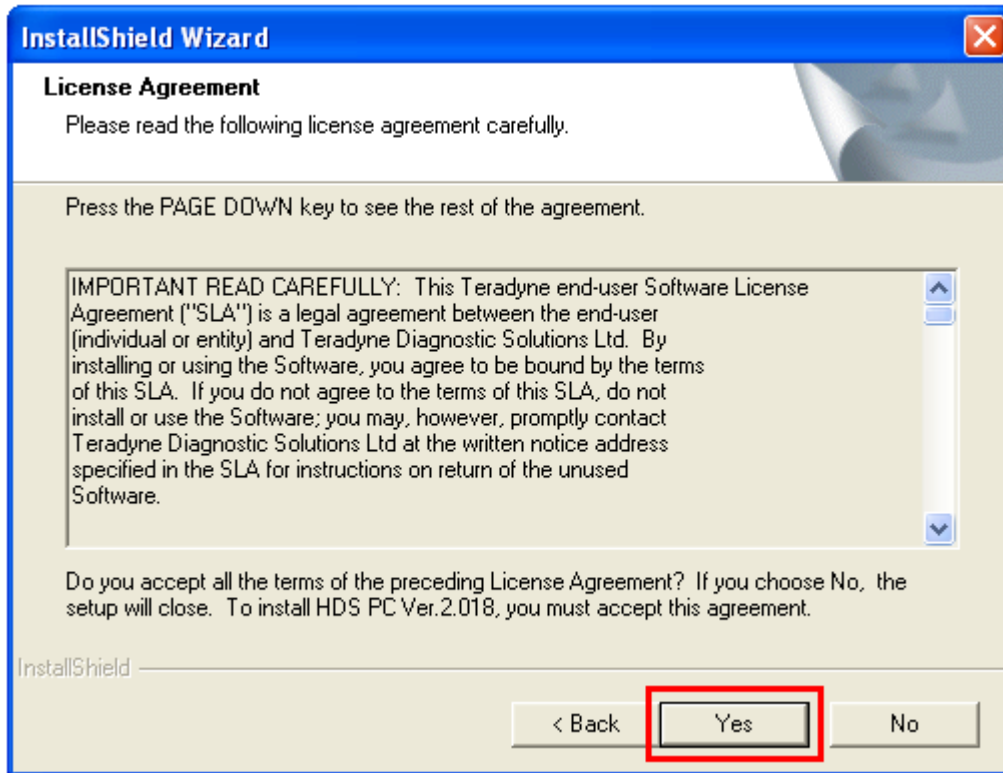


Setup. exe

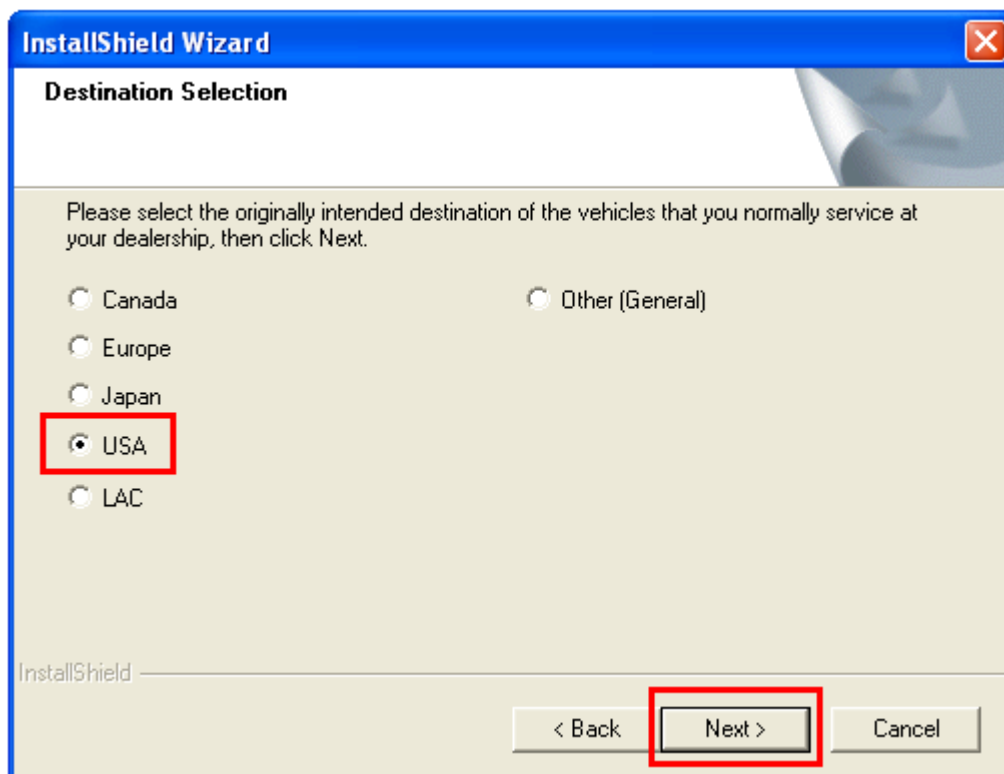
- Click Next



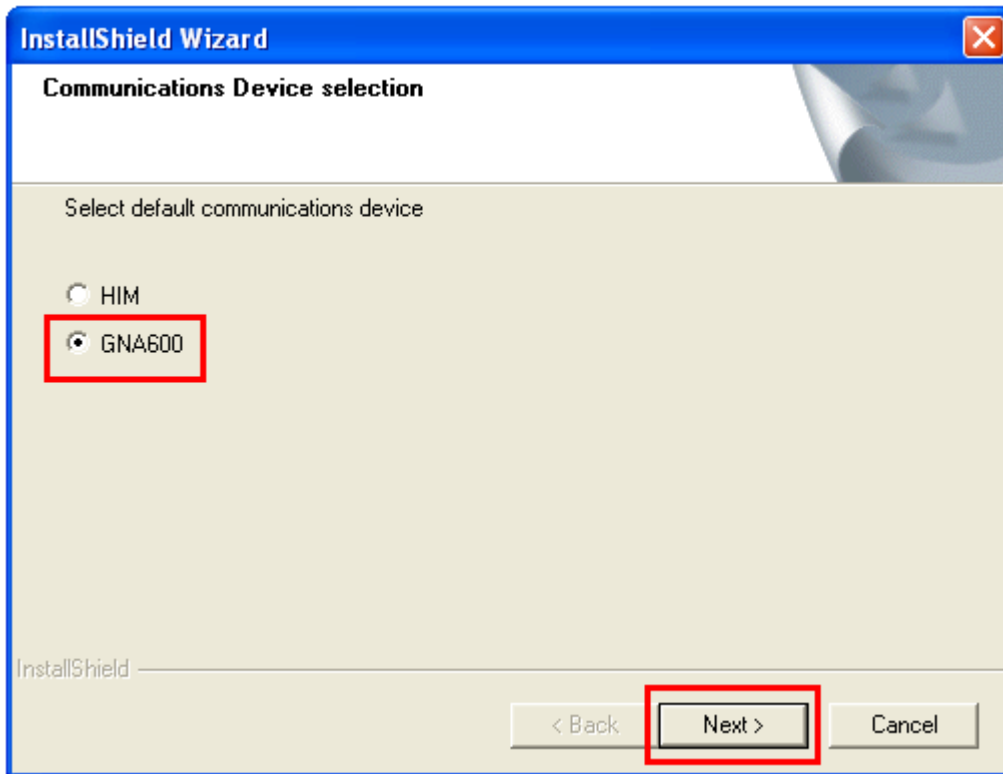
- Click Yes



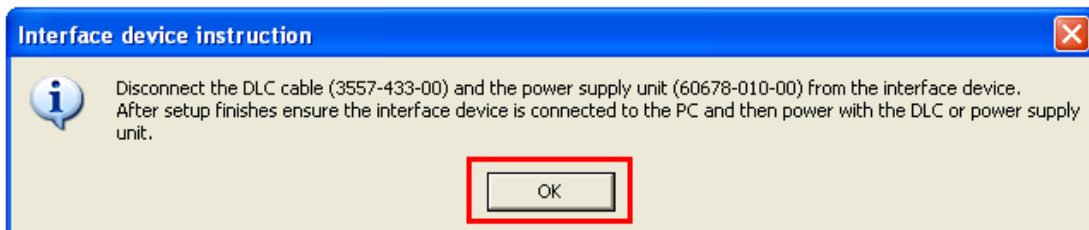
- Select USA, then Click Next



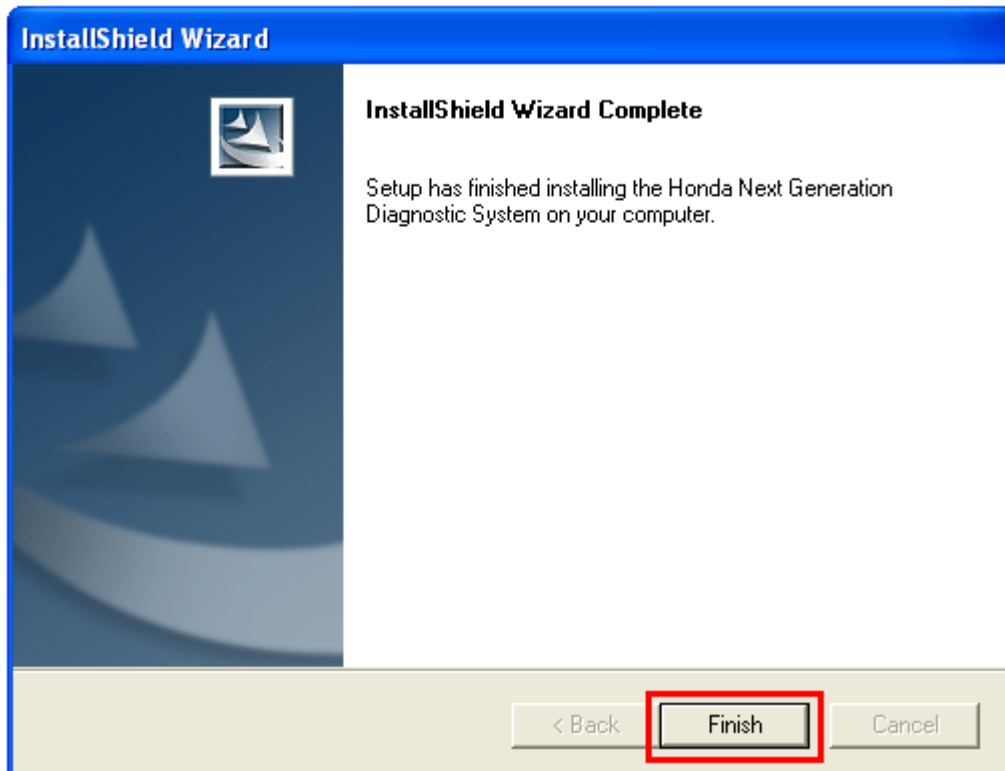
- Select GNA600, then Click Next



- Click OK

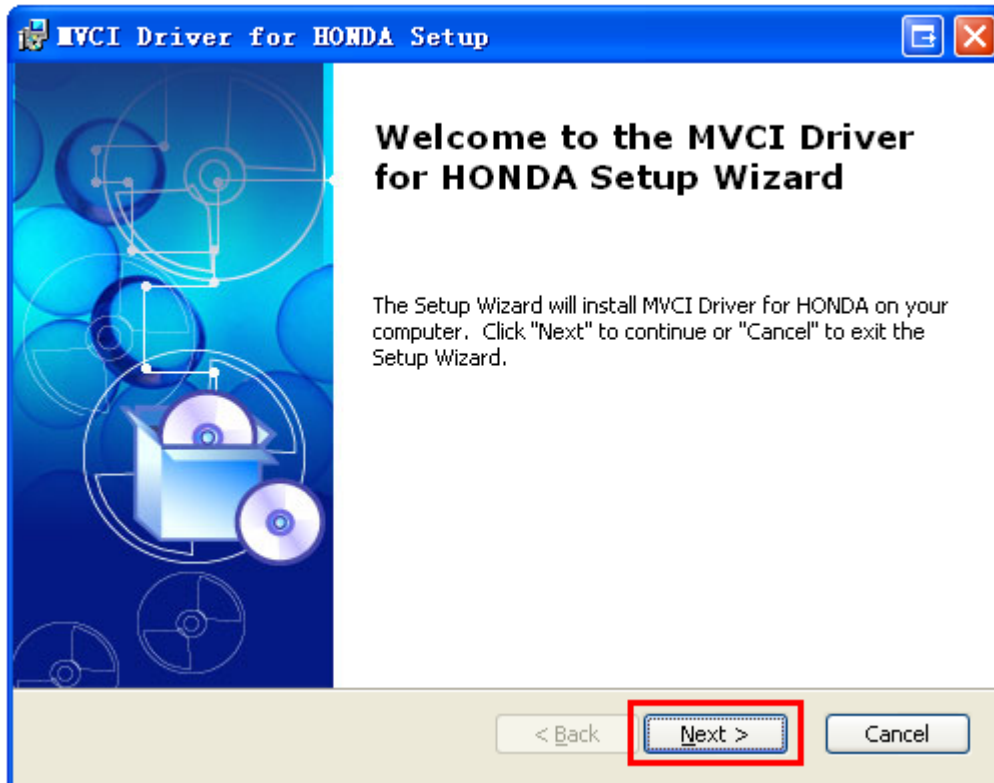


- **Click Finish**

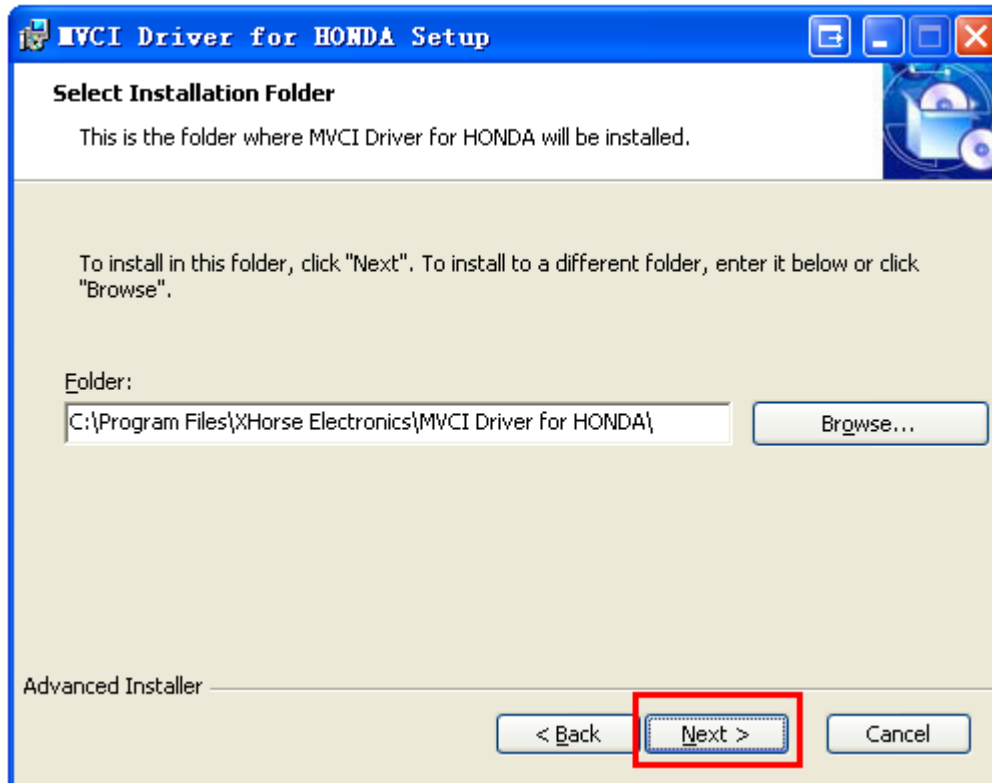


2. Install MVCI Driver

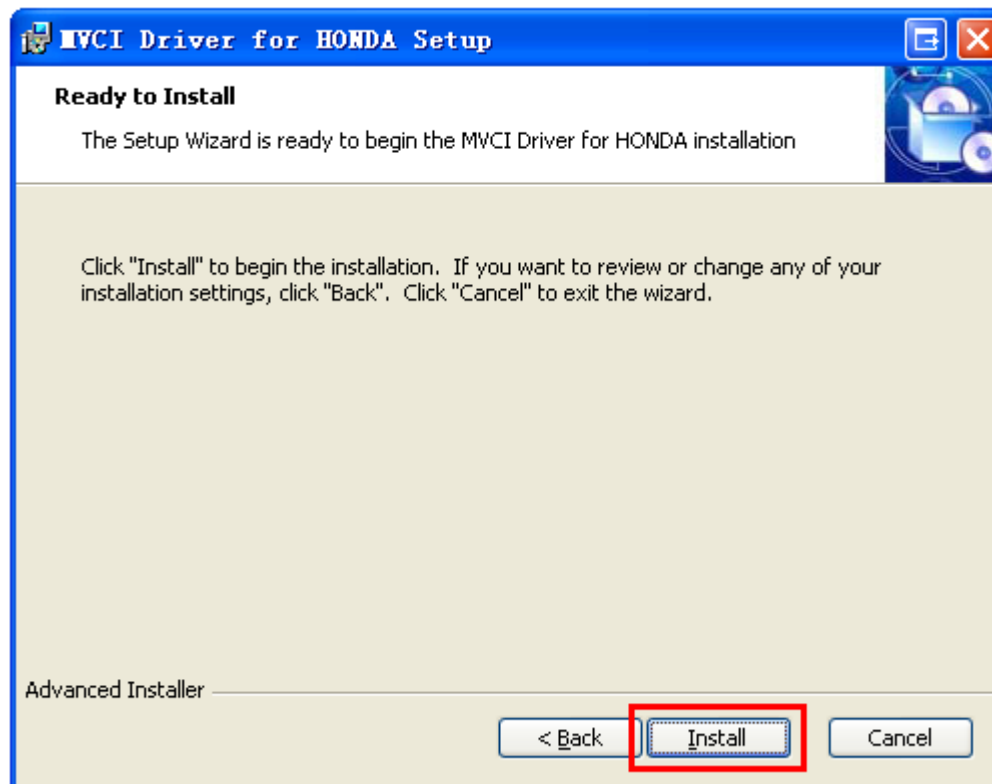
- Click Next



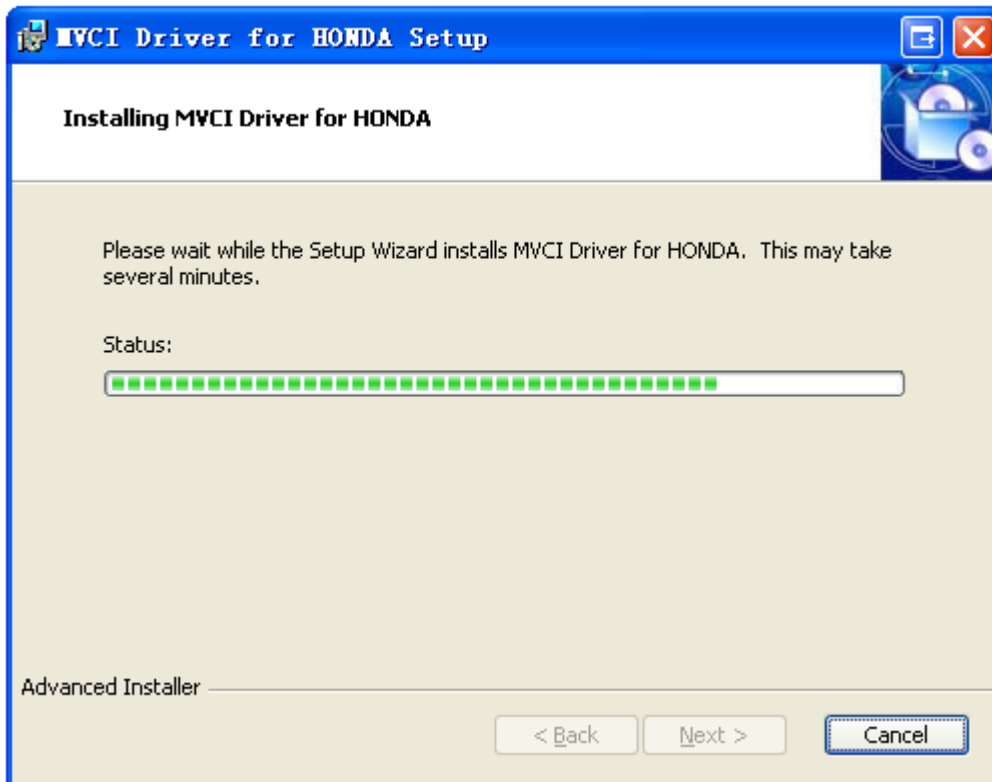
- **Select installation folder, then click Next**



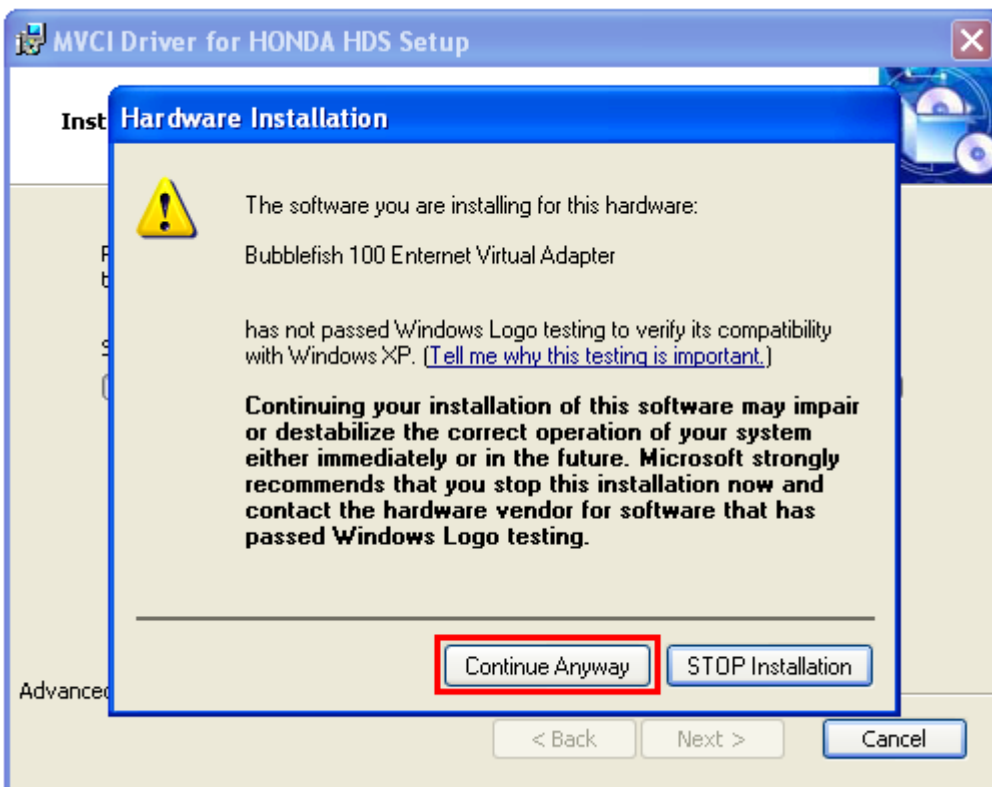
- **Click Install to begin installation**



- Installing...



- Select Continue Anyway



- Click Finish to exit installation

