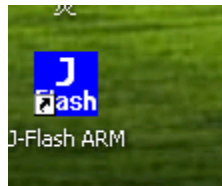


How to reprogram the token chip of KESS V2

- OBD365.com

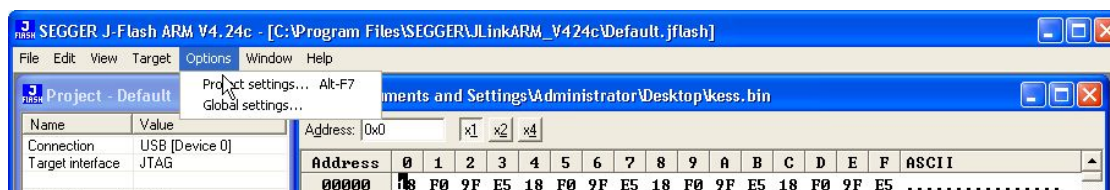
1. Open J-Flash ARM

Offene J-Flash-ARM

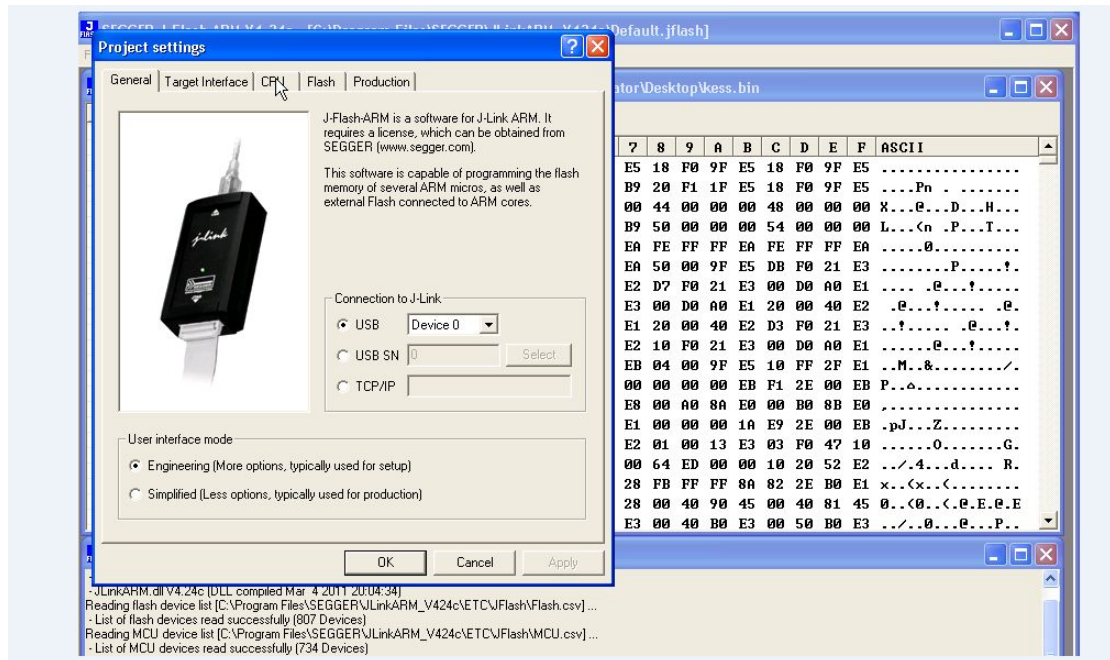


2. Choose options, then click project settings...Alt-F7

Optionen auswählen, klicken Sie dann auf Projekt-Einstellungen ... Alt-F7

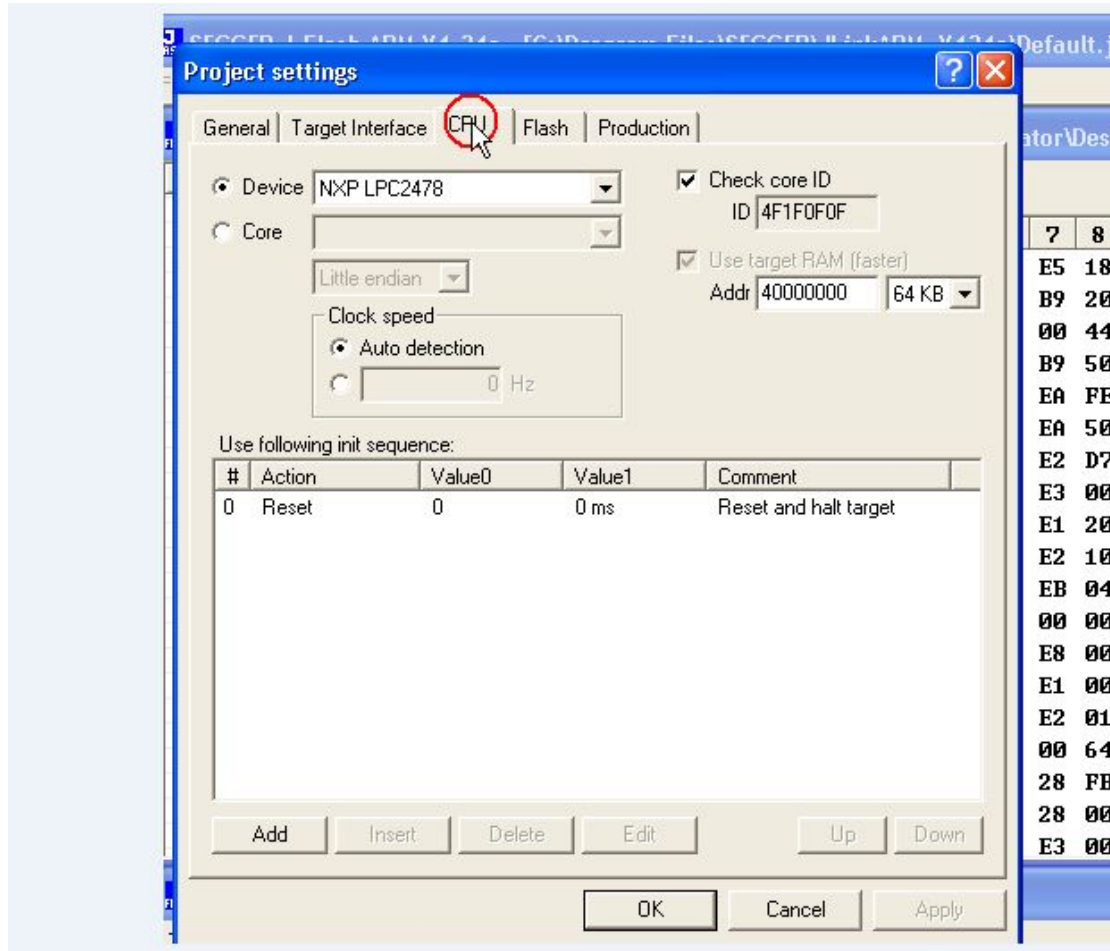


3. General shows as the picture:

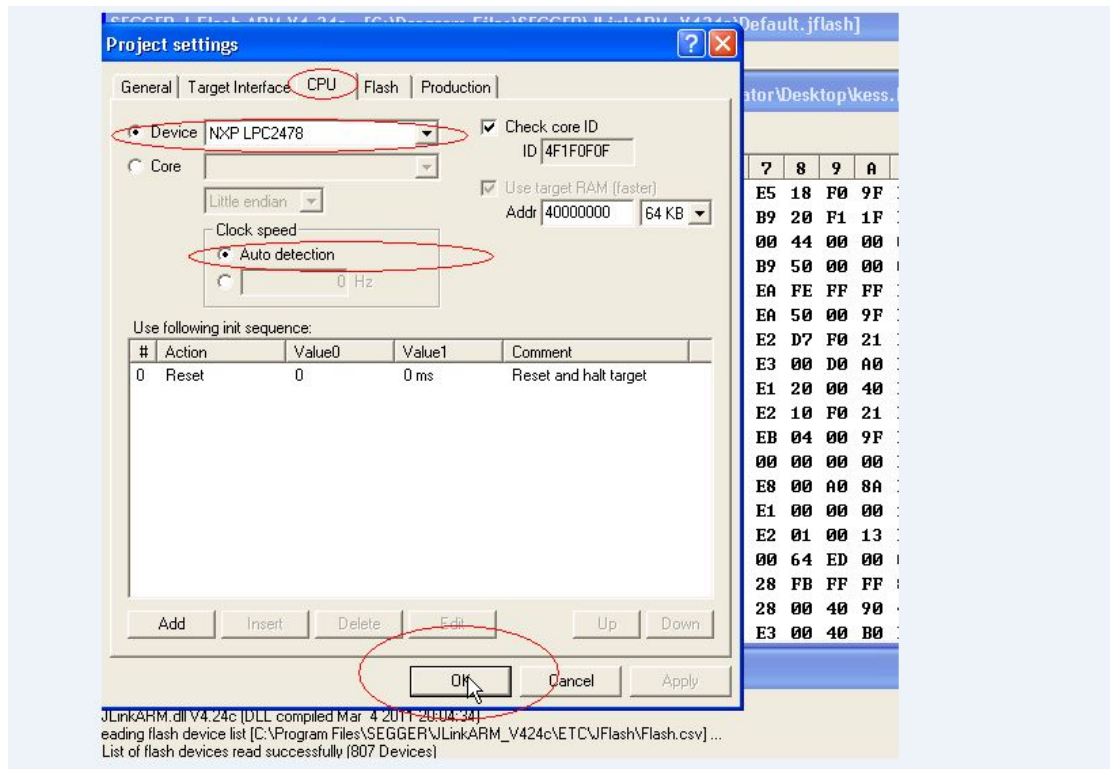


4. Click "CPU"

Klicken Sie auf "CPU"

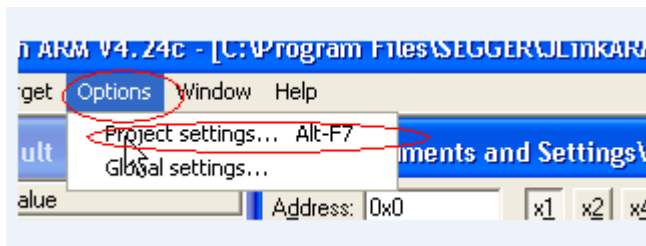


5. Set as the picture, at last click ok:
 Als das Bild endlich auf OK:



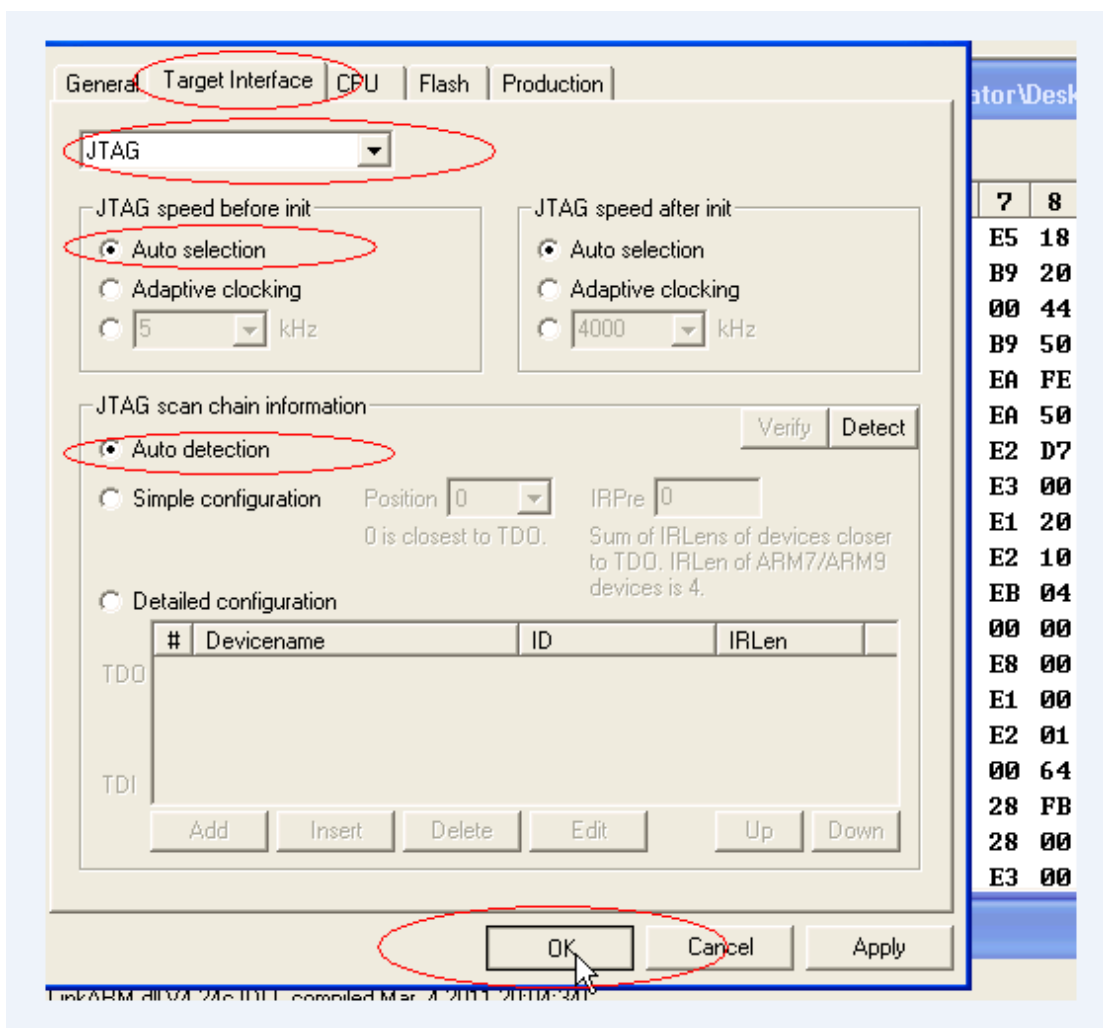
6. Click options again, choose also project settings... Alt-F7

Klicken Sie auf Optionen erneut, wählen Sie auch die Projekteinstellungen ... Alt-F7



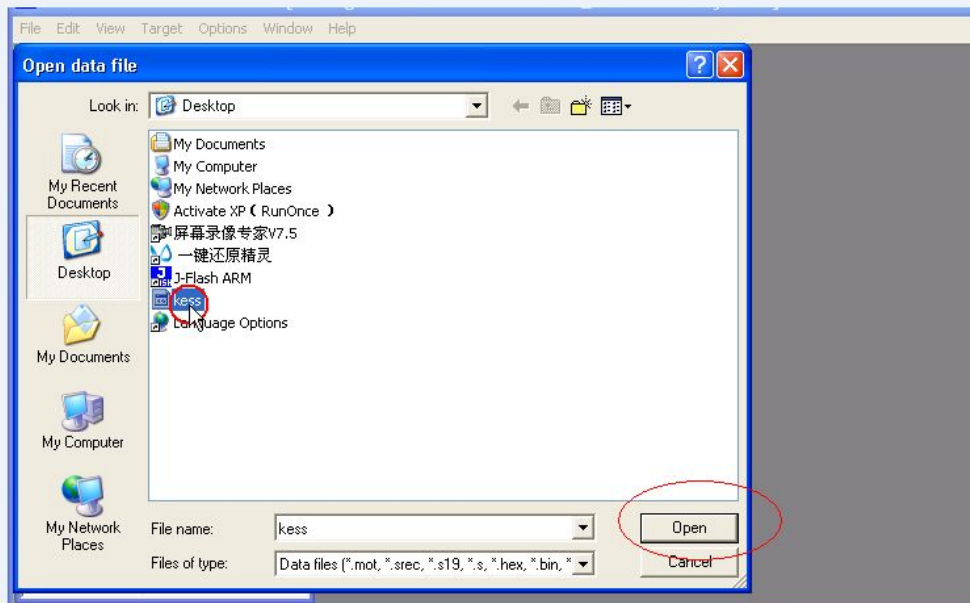
7. Click "Target Interface" and set as the picture, at last click OK:

Klicken Sie auf "Target Interface", und wie das Bild gesetzt, endlich klicken Sie auf OK:



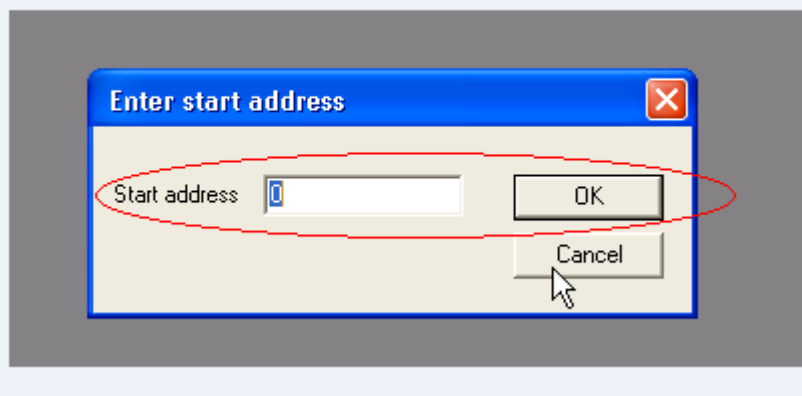
8. Close the "kess.bin" as the picture:

Schließen Sie den "kess.bin", wie das Bild:



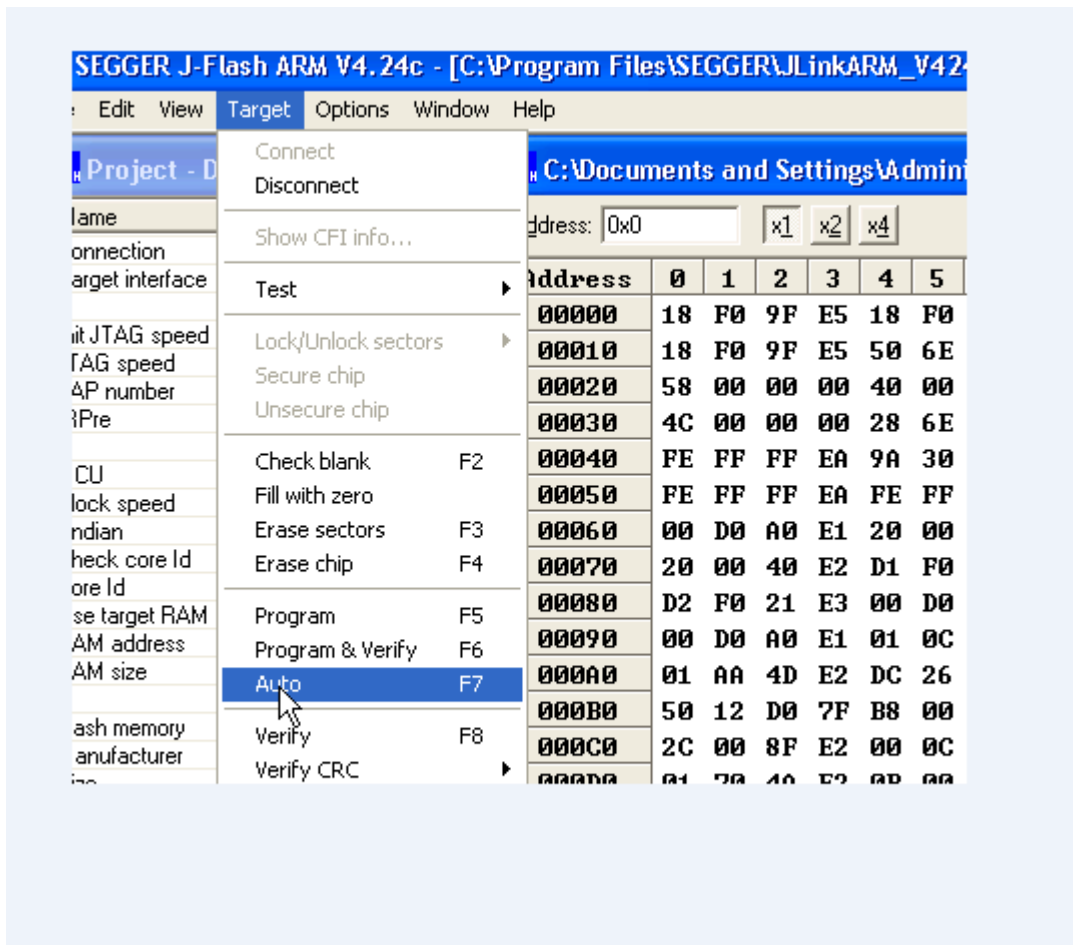
10. Click OK

Klicken Sie auf OK



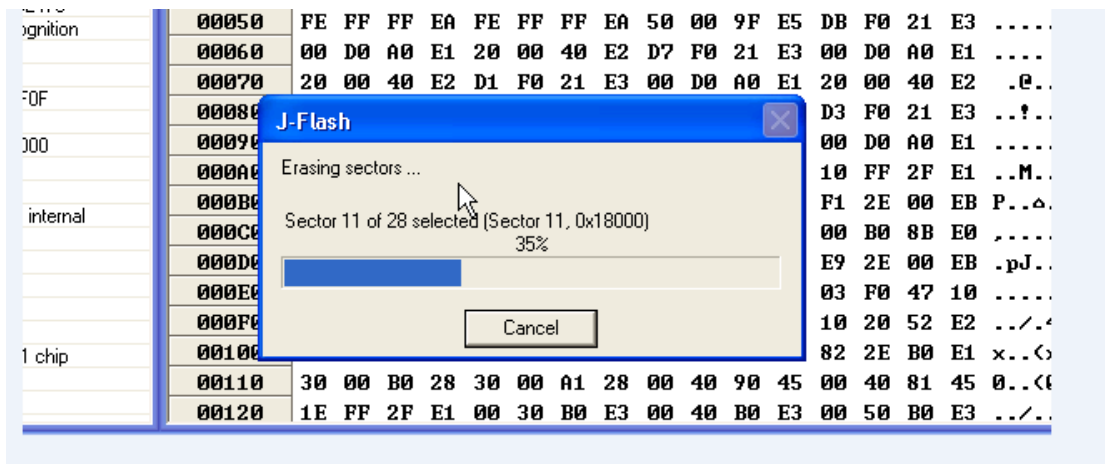
11. Click "Target", then choose "auto"

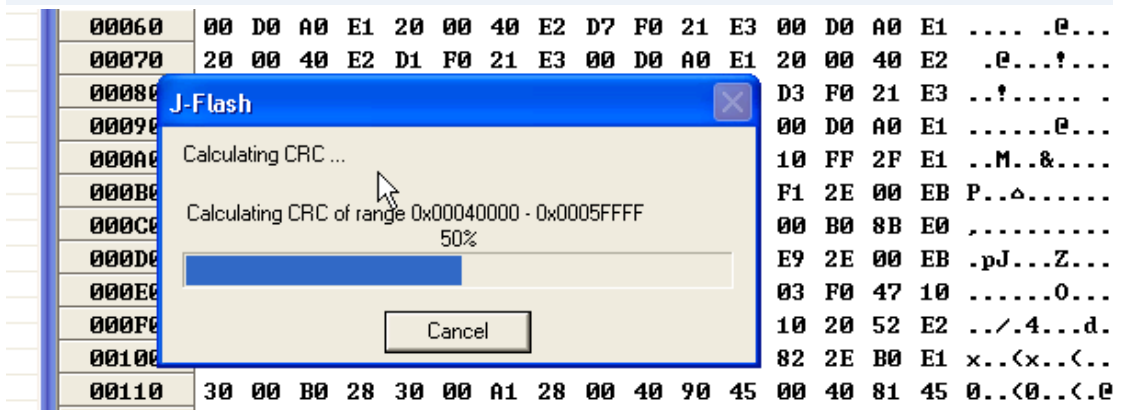
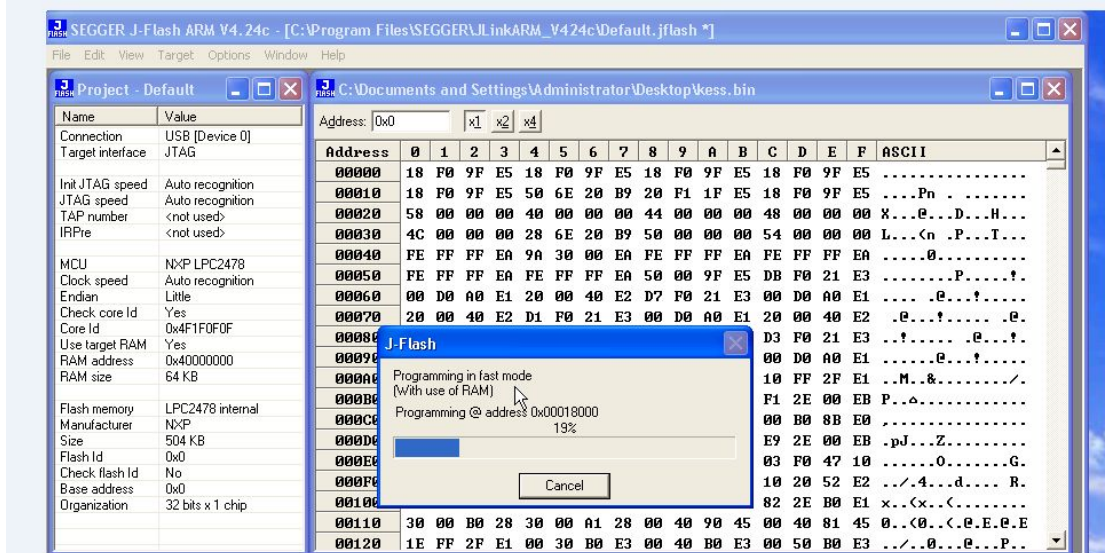
Klicken Sie auf "Ziel", und wählen Sie "auto"



12 J-Flashing automatically

J-Blinken automatisch





13. Click OK

Klicken Sie auf OK

