

Abritus 72 Ltd.

Date: 28-July-2010



RENAULT

ABRITES Renault Commander

User Manual

Version:

1.5

issued by:

Abritus 72 Ltd



List of Revisions			
Date	Chapter	Description	Revision
11.11.2008		Release version of the document	1.0
18.03.2009		Update to V1.1 of the software	1.1
17.06.200		Update to V2.0 of the software	1.2
20.01.2010		Update to V2.3 of the software	1.3
31.05.2010		Update to V2.6 of the software	1.4
28.07.2010		Update to V2.8 of the software	1.5

1 INTRODUCTION	4
2 INSTALLATION.....	4
2.1 INSTALLING USB INTERFACE DRIVERS	4
2.2 INSTALLING “ABRITES RENAULT COMMANDER”	4
3 DIAGNOSTIC WITH “ABRITES RENAULT COMMANDER”	6
3.1 STANDARD DIAGNOSTIC REQUESTS.....	6
3.1.1 Identification.....	7
3.1.2 Read History information	8
3.1.3 Read Diagnostic Trouble Codes	8
3.1.4 Clear Diagnostic Trouble Codes	9
3.1.5 Read Memory.....	9
3.2 KEY LEARNING	10
3.3 SPECIAL FUNCTIONS	13
3.3.1 “Dump Tool”	13
3.3.2 “Change ID”	13
3.3.3 “Odometer Clio/Kangoo/Meganne HC908 JAEGER”	13
3.3.4 “PIN Calculator”	13
3.3.5 “Clio PIN by dump”	14
4 TROUBLESHOOTING	15
5 APPENDIX.....	16
5.1 SUPPORTED MODELS FOR KEY-LEARNING	16

1 INTRODUCTION

“Abrites Renault Commander” is a Windows PC based diagnostic software for the Renault vehicles. With this tool you're able to learn new key/cards to the car without need of PIN code. The “Abrites Renault Commander” also provides basic diagnostic capabilities for Renault vehicles.

2 INSTALLATION

Your set consists of one interface (USB to OBDII). Optionally you might have a programmer which is connected either to the USB port of the PC, or to the interface (USB to OBDII).

2.1 Installing USB Interface drivers

The drivers are installed automatically when installing the software.

In case of some problem with the drivers you might download latest drivers from www.ftdichip.com

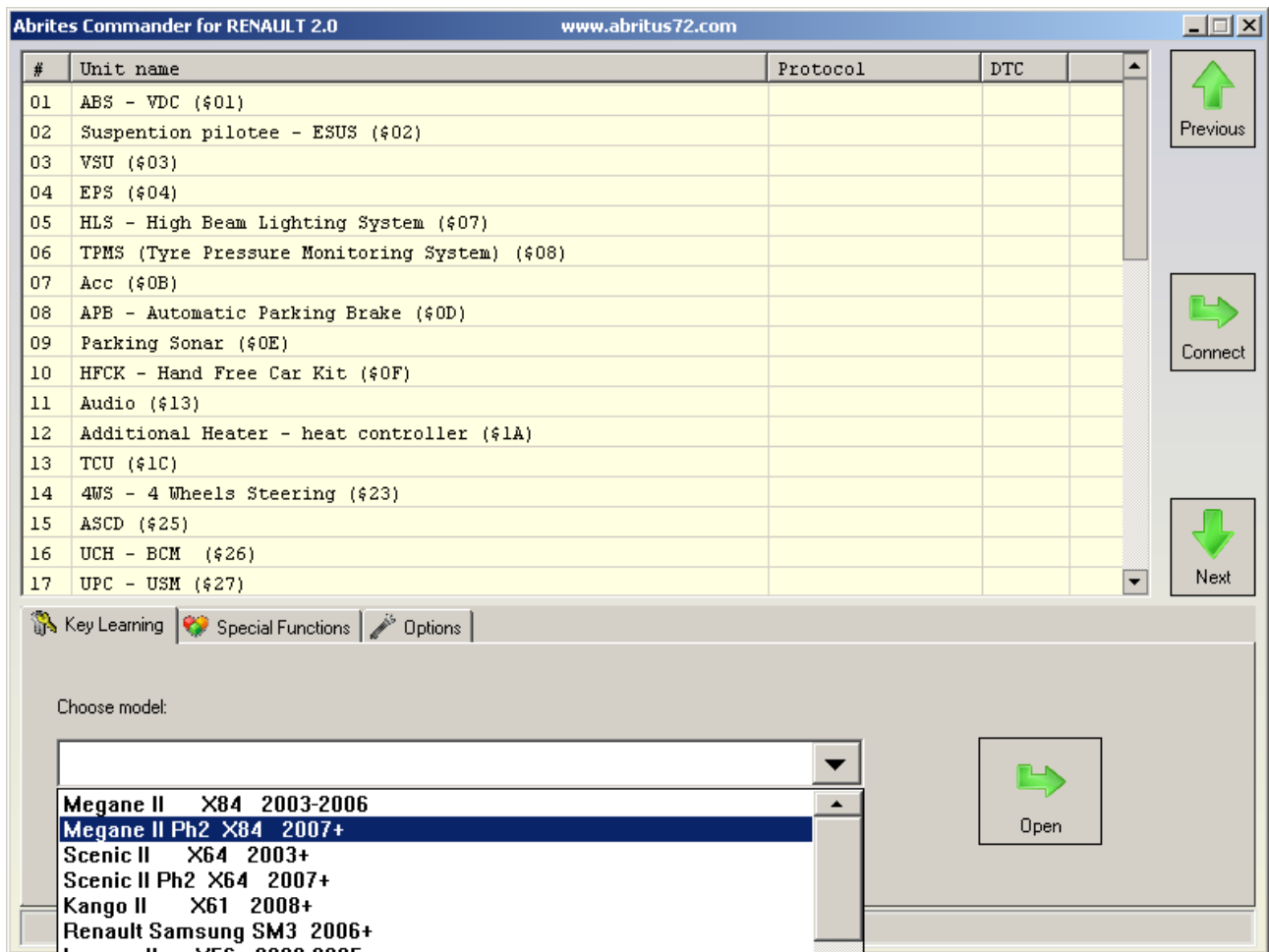
2.2 Installing “ABRITES Renault Commander”

The “ABRITES Renault Commander” is contained into the installation package, so please run the setup program. It will create a program group in the start menu and optionally a desktop icon.

Now you are ready to start the "ABRITES Renault Commander"

When starting the software, there is a splash screen appeared, where the connection with the hardware is examined. **If no problem appear, then a message “Connection OK” should appear!**

The main screen looks like this:



ATTENTION:

Make sure you are running the “ABRITES Renault Commander” from its folder. If you are using a shortcut to the “ABRITES Renault Commander”, please be sure that the “working folder” parameter is set to the folder where the executable is placed! If the “working folder” of the shortcut is not set the K-Line may function incorrectly.

3 DIAGNOSTIC WITH “ABRITES RENAULT COMMANDER”

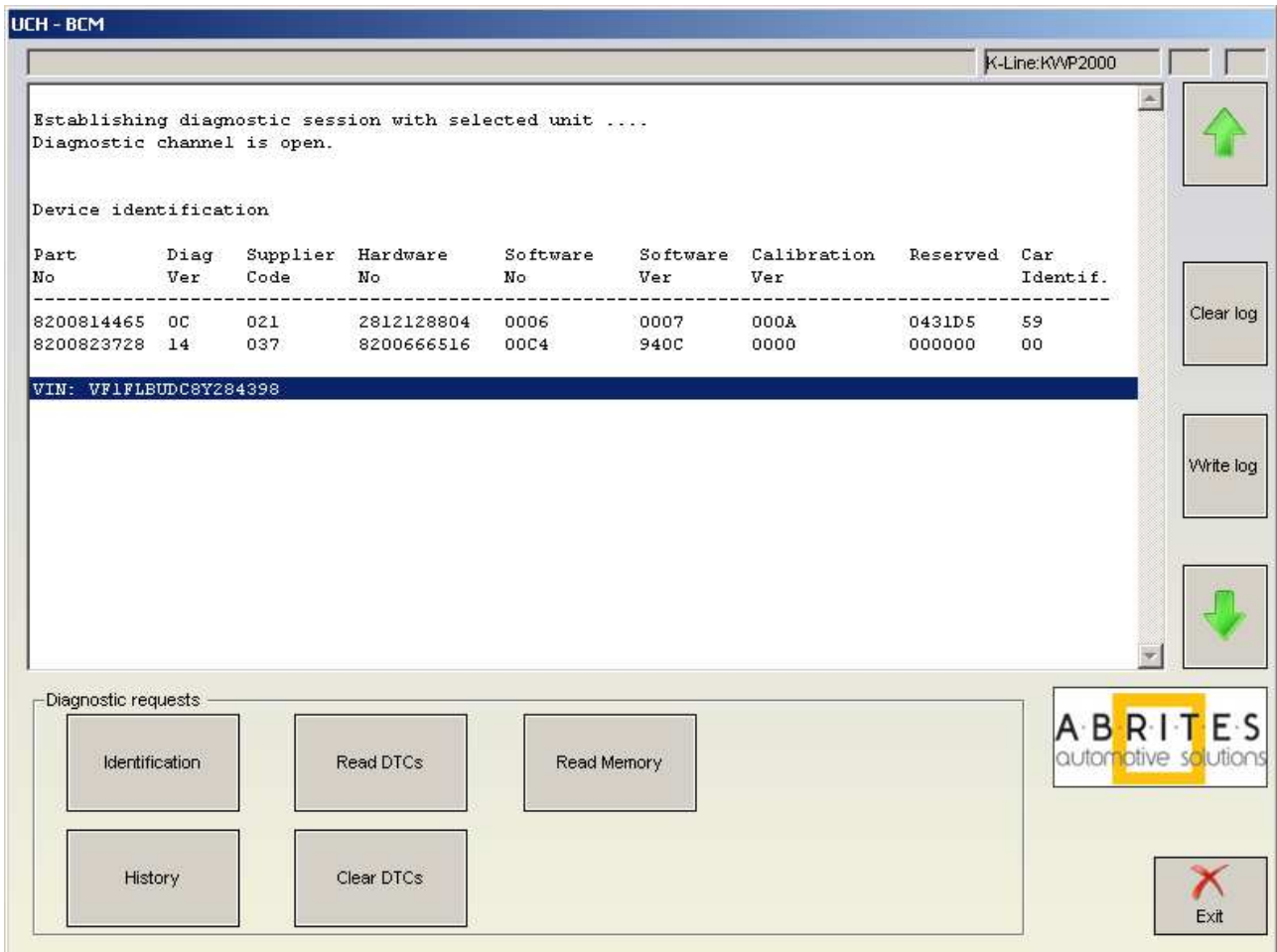
The “ABRITES Renault Commander” consists basically of two parts:

- Standard diagnostic functions like device identification and reading/clearing trouble codes.
- Key-learning
- Special functions like dump tool, PIN Calculator, etc.

All devices, which can be installed into the car are listed in the main screen of the “ABRITES Renault Commander”. If you want to connect to some device please double click on it. The “ABRITES Renault Commander” supports communication through CAN and K-Line with fast init.

3.1 Standard diagnostic requests

When double-clicking on the desired device in the main “ABRITES Renault Commander” window, you connect to the device to proceed standard diagnostic requests. The following dialog is opened:



This dialog provides you the possibility to execute the following diagnostic requests:

3.1.1 Identification

“Identification” will provide you the device identification and VIN number if present.

The screenshot shows the 'UCH - BCM' diagnostic software interface. The main window displays the following text and data:

```
Establishing diagnostic session with selected unit ....  
Diagnostic channel is open.
```

Device identification

Part No	Diag Ver	Supplier Code	Hardware No	Software No	Software Ver	Calibration Ver	Reserved	Car Identif.
8200814465	0C	021	2812128804	0006	0007	000A	0431D5	59
8200823728	14	037	8200666516	00C4	940C	0000	000000	00

VIN: VF1FLBUDC8Y284398

Diagnostic requests:

- Identification
- Read DTCs
- Read Memory
- History
- Clear DTCs

ABRITES automotive solutions

Exit

3.1.2 Read History information

Pressing the "History" button will read the re-flashing information for the selected device

UCH - BCM

K-Line:KWP2000

Part No	Diag Ver	Supplier Code	Hardware No	Software No	Software Ver	Calibration Ver	Reserved	Car Identif.
8200814465	0C	021	2812128804	0006	0007	000A	0431D5	59
8200823728	14	037	8200666516	00C4	940C	0000	000000	00

VIN: VF1FLBUDC8Y284398

Device application information:

Rec\ No	Part No	Diag Ver	Supplier Code	Hardware No	Software No	Software Ver	Calibration Ver	Reserved	Car Identif.
N	8200834057	14	037	8200666516	00C4	940C	2C10	000000	00
N-1	8200823728	14	037	8200666516	00C4	940C	0000	000000	00
0	8200823728	14	037	8200666516	00C4	940C	0000	000000	00

Device reprogramming information:

Rec\ No	Approval No	Progr. Site	Progr. Tool	Nb	Progr. Date yy/mm/dd	Res	Mark	CRC
N	0246DAD126	0M3 0	00000	00	00/CF/B9	A5C9	29	7608
N-1	0000000000	FB658	RECCS	00	08/03/30	1252	5C	E19F
0	0000000000	FB658	RECCS	00	08/03/30	1252	5C	E19F

Diagnostic requests


Identification


Read DTCs

Read Memory

History

Clear DTCs

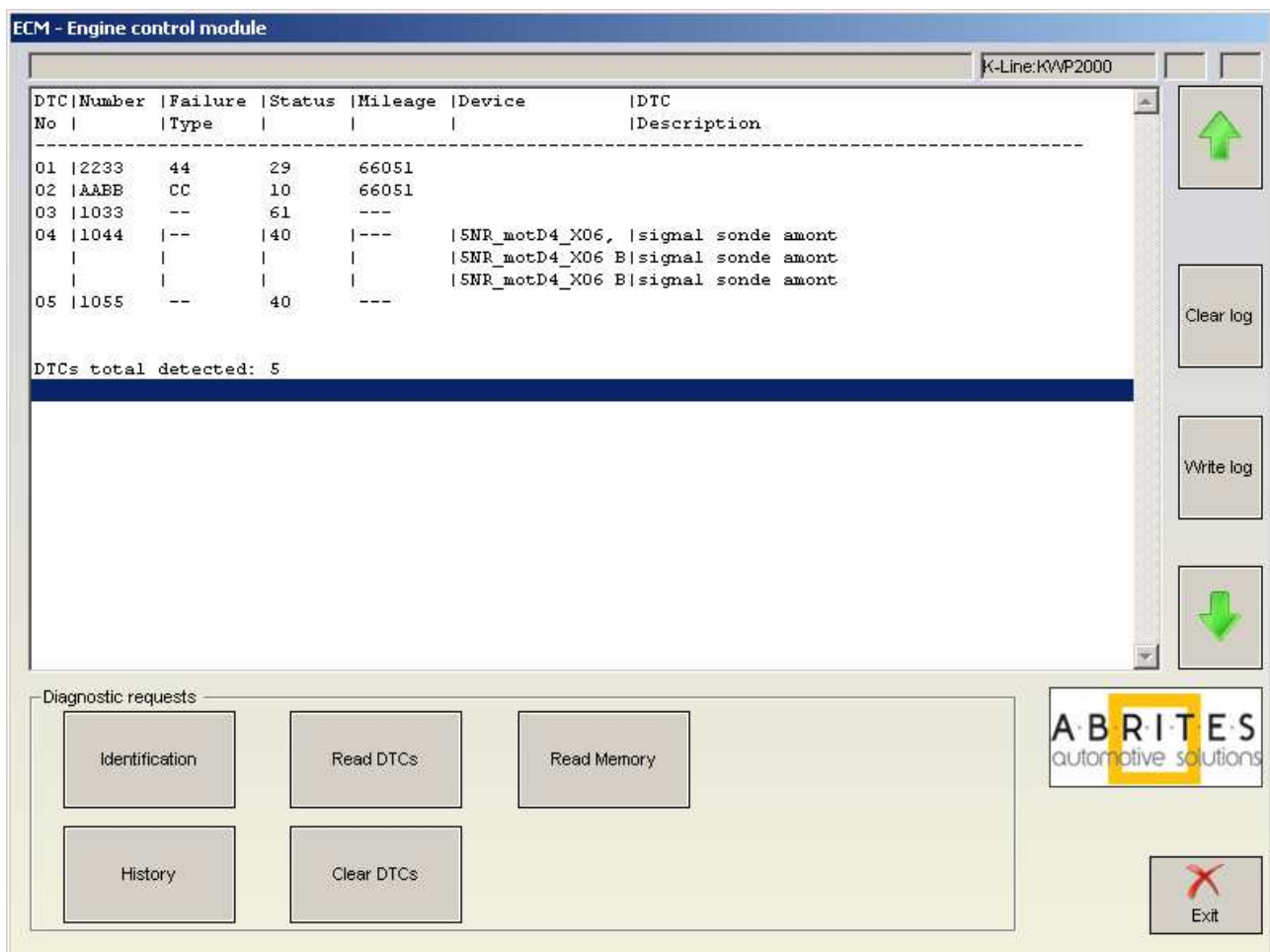




Exit

3.1.3 Read Diagnostic Trouble Codes

"Read DTCs" read the diagnostic trouble codes currently stored into the device



The total number of DTCs being set is also reported.

Please pay attention that for some trouble codes more than one description might be reported.

This is so because on the different devices the DTC code might have different meanings.

Also on different models there are also a lot of different devices where this DTC might appear.

So if you receive too many descriptions for some DTC please specify the first the car model before you connect to the desired model!

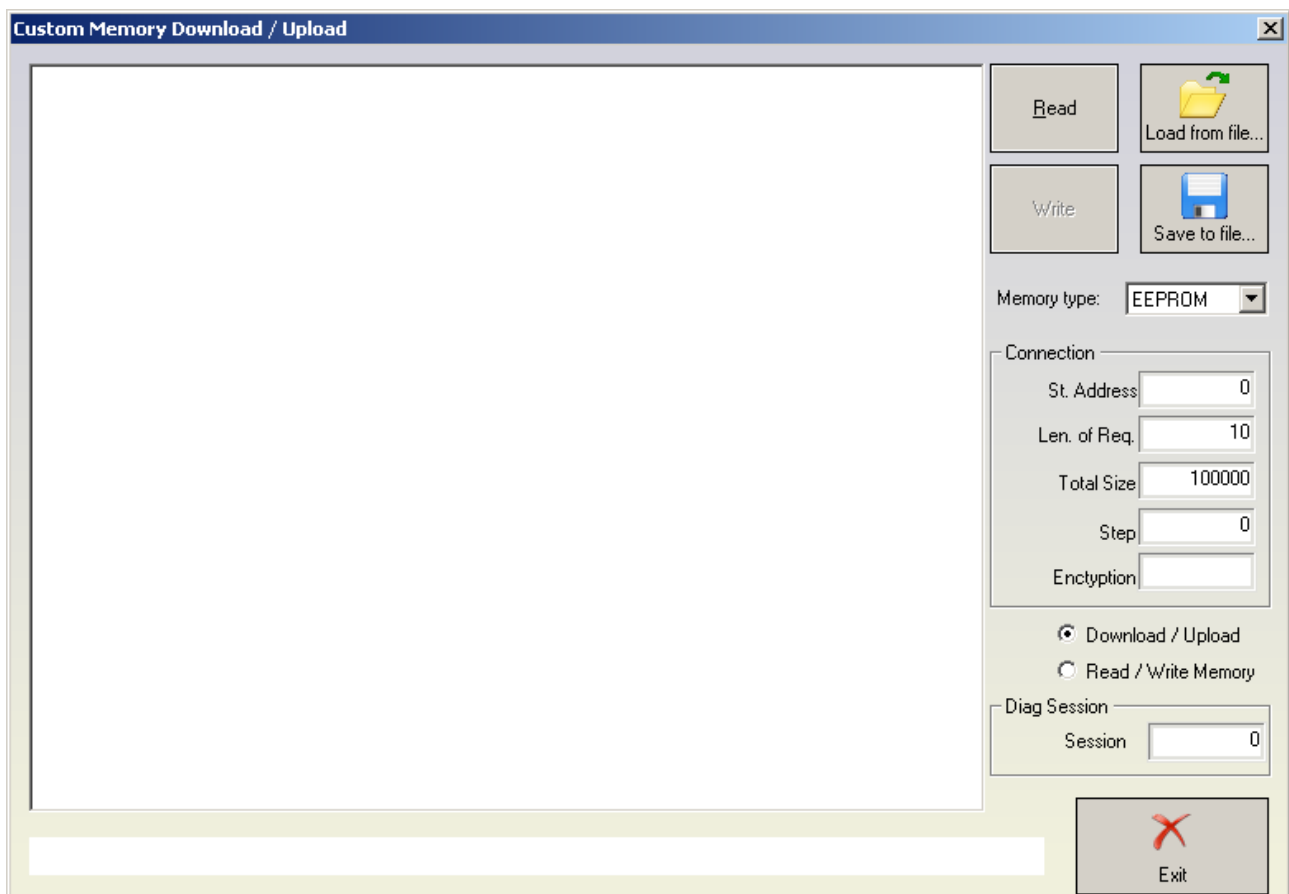
3.1.4 Clear Diagnostic Trouble Codes

“Clear DTCs” clears the diagnostic trouble codes.

3.1.5 Read Memory

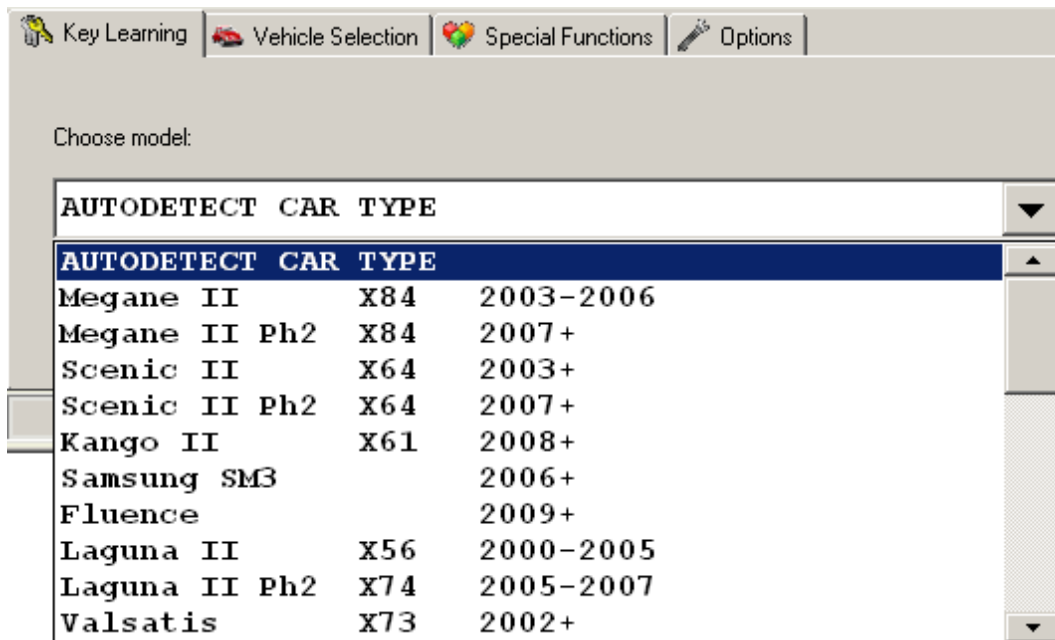
“Read Memory” allows to read/write the device memory. There are three memory types which can be read/write – EEPROM, RAM and Flash. The user has to put manually the address space where the desired memory is mapped.

NOTE: This function is applicable only for devices which don't have memory protection.

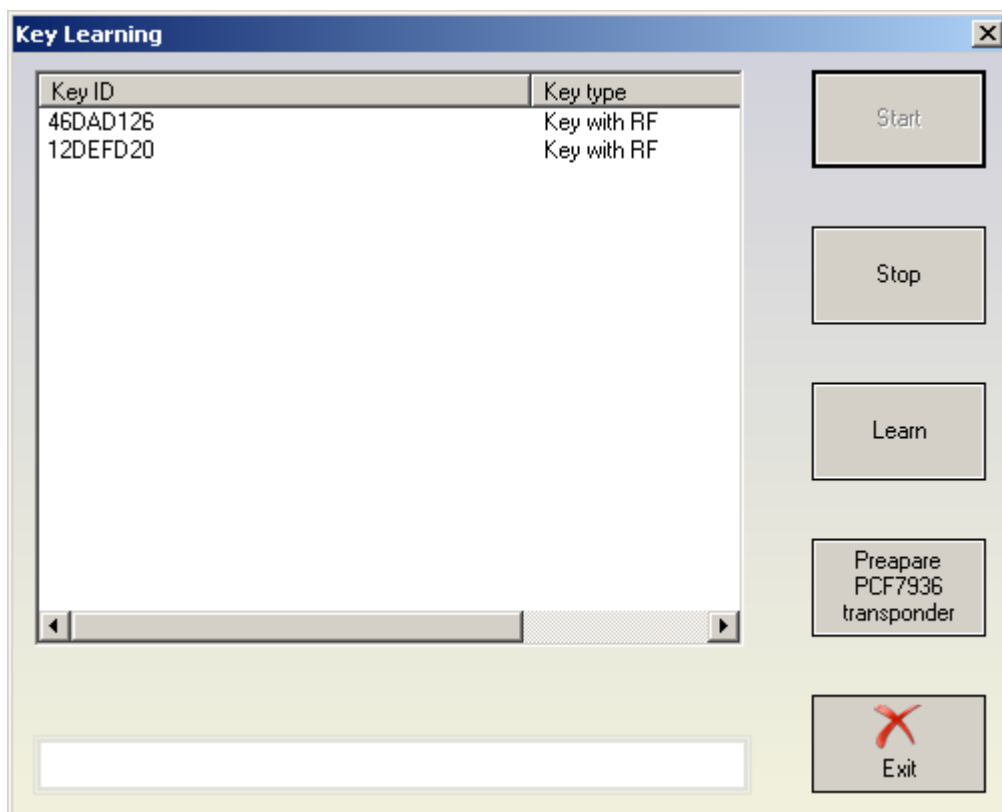


3.2 Key Learning

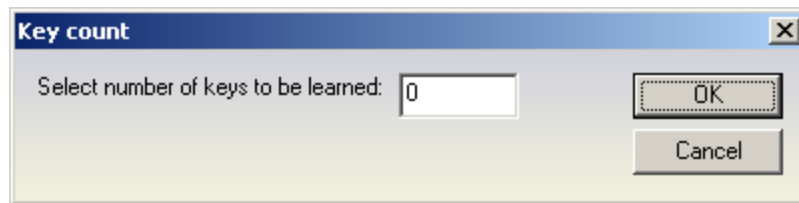
There is function for auto-detection of the vehicle model. Nevertheless if you don't succeed to learn the key using the auto-detection, please try to make it by selection the model manually.



When this function is opened, the “ABRITES Renault Commander” opens the following dialog:



When you press the “Start” button then application connects to the immobilizer and reads the keys which are currently accepted from the car. If you want to learn a key/card, then you need to press the “Learn” button and you've to specify how many keys/cards you want to learn.



After that you should follow the instructions.

Normally the procedure goes in that way:

1. When pressing the start button the application is connecting to the immobilizer and displaying the present keys/cards. In most cases it is not required that the car is on ignition, for some cars the immobilizer is awake directly from the diagnostic. But on some cars it may happened that the ignition is given when connecting to the device.
2. After pressing the "Learn" button and specifying the number of keys you will be invited to remove the key/card from the ignition. Please be sure that the key/cards is really removed after this. Otherwise immobilizer will reject the key-learning procedure.
3. After that you will be invited to insert each next key/card and give the ignition ON. For each key there are several seconds required until the immobilizer recognize the key/card.

NOTE: For Clio III, Modus and Traffic III the keys are put into the programmer, not into the ignition. When putting the key into the programmer please be sure that it is correct placed as showed on the pictures below:



4. Step "3" is repeated for each key you want to learn.
5. After inserting all keys which have to be learned you will be asked whether you want to store the result or to reject the whole procedure (use-full if you made some mistake during the key-learning procedure like forgot to put some key).

If you don't have an original key for the model, you can use PCF7936 transponder to make a key for the car. Please note that PCF7936 might be used only on cars with key, not on cars with cards! Also if you learn PCF7936 transponder there will be no remote control for that key! So if you want to use such PCF7936 transponder, you should connect your programmer, put a factory new transponder inside and press the "Prepare PCF7936 transponder".

Troubleshooting: Two possible error messages may appear when trying to learn a new key/card:

- Error "\$E001" - this error means that the immobilizer is not ready to perform the key-learning procedure. Typical reason for this message is when you try to make the procedure while the engine is started. Another reason for that message may be that the card is not removed from the ignition lock when you're invited to do this. Another reason for this message is when an

invalid security code was entered previously into the immobilizer – after such operation the immobilizer is blocked for a log time and you've to wait until it is unblocked.

On some cars (typically Scenic and Megane) this error may appear by some other reason. You can try to perform the key-learning procedure as described above but without giving on ignition during step “1” - try the following sequence: close the doors of the car and if possible lock the car, then open the door and go to the key-learning procedure. Press “Start” button but WITHOUT GIVING ON IGNITION before that. After that you can continue with step “2” of the procedure described above. If this also doesn't help you can try to leave the card in the ignition lock during step “2”.

- Error “\$E002” - the key-learning procedure is accepted from the immobilizer, but the some of the cards which you tried to learn were invalid. This can typically happen when you try to learn a car from one model to another. This error may also appear if you've selected wrong model – e.g. you've “Laguna II” but you've selected “Laguna II Phase 2”

NOTE: When you're trying to program a key to e.g. Laguna II Ph2, it is possible that you got an error. Please try the Laguna II type then – there is no risk to damage the immobilizer. The reason for this is that some cars in the greater phase are equipped with older immobilizer. This may apply also to Espace IV Ph2 and Velsatis Ph2.

3.3 Special functions

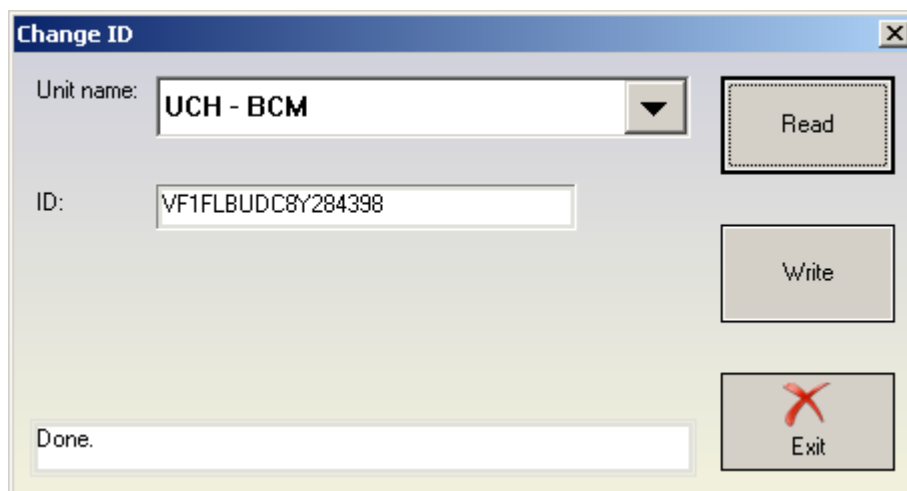
The following special functions are available:

3.3.1 “Dump Tool”

The dump tool give to the user the ability to make modification in the dump files of different devices (e.g. airbags). But you will need to read EEPROM/flash with a programmer, and after modifications in the dump tool the resulting file has to be write back to the EEPROM/flash with a programmer.

3.3.2 “Change ID”

Calling this function will bring you a dialog, where all devices for the selected model are available.



For each device you can try to read and change the Vehicle Identification Number. When changing this number there is also a checksum which is calculated automatically.

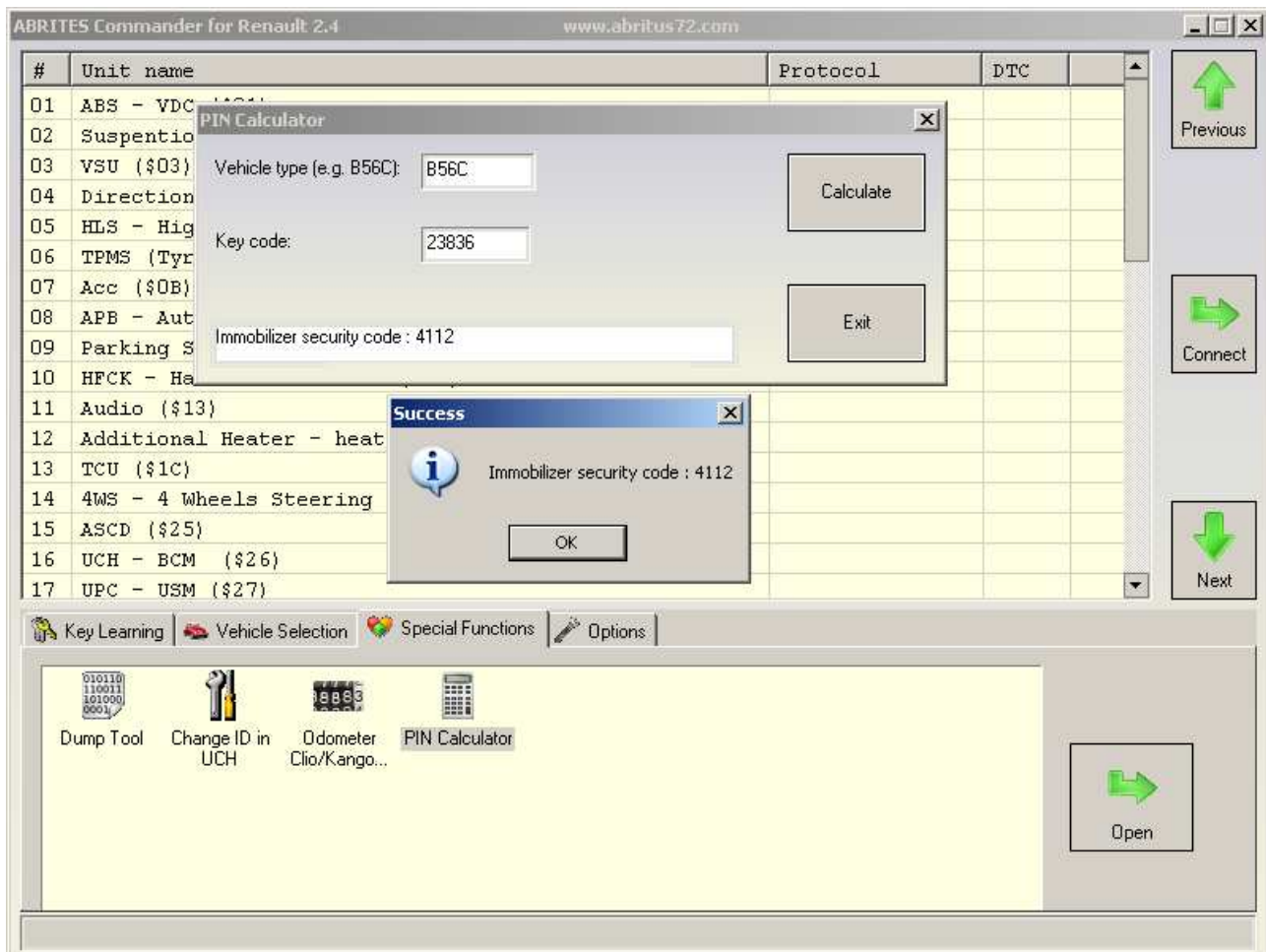
Please note that in the most of the device there will be no such number present.

3.3.3 “Odometer Clio/Kangoo/Meganne HC908 JAEGER”

This will change the odometer with vehicles with this type of instrument.

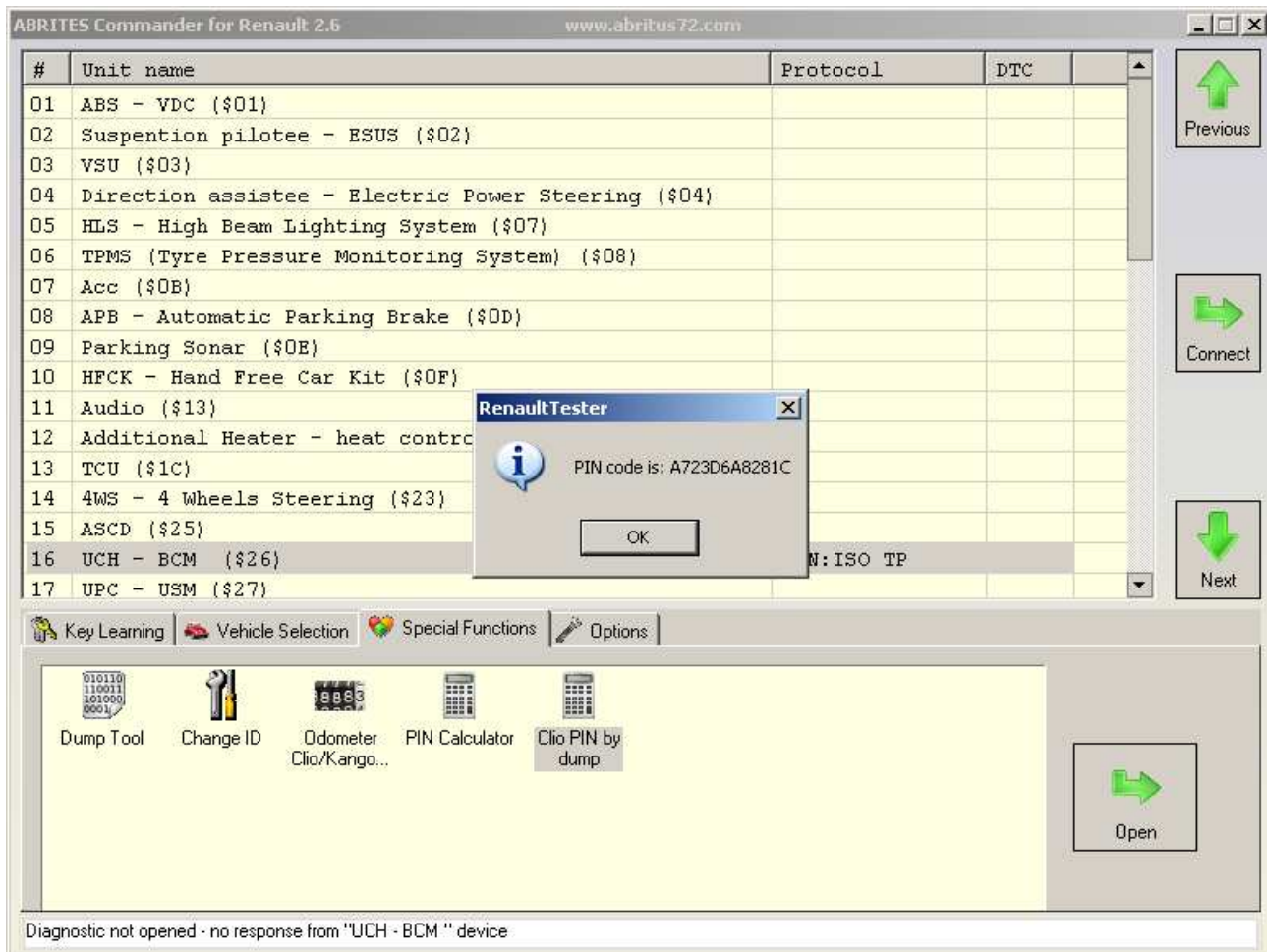
3.3.4 “PIN Calculator”

This is a calculator which can evaluate the immobilizer security code from the vehicle model and the code written on the key itself (when you open the key). This calculator is used for cars with 4 digit PIN till 2001 year.



3.3.5 “Clio PIN by dump”

This is a calculator for getting the Clio PIN code from the immobilizer dump. After starting this special function you will need to select the EEPROM dump file and after that you will get the security (PIN) code.



4 TROUBLESHOOTING

Below you can find a list of typical problems and how to solve them:

Problem: When starting the “ABRITES Renault Commander” on the splash screen “**Interface NOT found**” is displayed

Solution:

- Please be sure that the USB interface drivers are installed properly. You can look at the device manager, the USB interface should appear as “USB Serial Port (COMxx)” where “xx” is the number of the port
- If the interface is recognized OK, then please try to unplug and plug it again into the USB slot and restart the “ABRITES Renault Commander”.
- If the problem is still present, please report about the problem to Abritus72 Ltd.

Problem: When starting the “ABRITES Renault Commander” a message “Error code: 0x10001. Please contact ‘support@abritus72.com’ with the Error code in the subject”

Solution:

- Please report about the problem to Abritus72 Ltd.

Problem: When starting the “ABRITES Renault Commander” a message “Error code: 0x10002. Please contact ‘support@abritus72.com’ with the Error code in the subject”

Solution:

Probably the dongle is not inserted into the USB slot or it is not recognized in the device manager. You can check in the device manager whether it is recognized. It should appear as “HID-compliant device” in the “Human Interface Devices” section.

Problem: When starting the “ABRITES Renault Commander” a message “Error code: 0x10003. Please contact ‘support@abritus72.com’ with the Error code in the subject”

Solution:

Probably SW dedicated for other interface was run on your interface. Please report about the problem to Abritus72 Ltd.

Problem: When starting the “ABRITES Renault Commander” a message “Error code: 0x10004. Please contact ‘support@abritus72.com’ with the Error code in the subject”

Solution:

Please report about the problem to Abritus72 Ltd.

Problem: Error is occurred when trying to program a key to “Renault Laguna II Ph2” (or Espace IV Ph2, Velsatis Ph2)

Solution: Please use “Laguna II” (respectively Espace IV or Velsatis)

5 APPENDIX

5.1 Supported models for key-learning

	Megane II X84 2003-2006
	Megane II Ph2 X84 2007+
	Scenic II X64 2003+

	<p>Scenic II Ph2 X64 2007+</p>
	<p>Modus</p>
	<p>Clio III</p>
	<p>Traffic III</p>
	<p>Laguna II X56 2000-2005</p>
	<p>Laguna II Ph2 X74 2005-2007</p>
	<p>Valsatis X73 2002+</p>
	<p>Valsatis Ph2 X73 2006+</p>

	Espace IV X81 2003-2006
	Espace IV Ph2 X81 2006+
	Master Ph2 X70 2002-2006
	Master Ph3 X70 2007+
	Traffic II X83 2002-2006
	Traffic II Ph2 X83 2007+
	Kangoo MUX Ph2 X76 2002-2007
	Clio II Ph2/3 X65 2002-2006

	Logan X90 2004-2008
	Logan Ph2 X90 2008+
	Sandero B90 2008+
	Solenza 2003-2005
	Twingo Ph2 X06 2002-2007
	Opel Vivaro 2002-2006 Opel Vivaro Ph2 2007+
	Opel Movano Ph2 2002-2006 Opel Movano Ph3 2007+